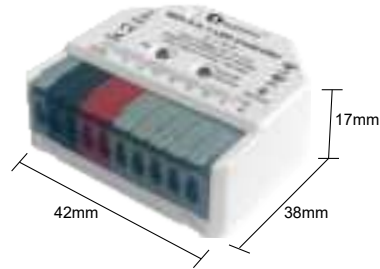




WiFi 5in1 LED Smart Controller User Instruction

GL-C-301W

Product Parameter



Product Model: GL-C-301W
Input Voltage: DC 12-24V
Output Current/Channel: 6A Max
Total Output Current: 10A Max
Communication Protocol: WiFi+Bluetooth+2.4G RF
Suggested Wire Type: 0.5-1.5mm² (24-16AWG)
Stripping Length: 8-9mm
Material: Fireproof PC
IP Rate: IP20
Operating Temperature: -20~45°C
Size: 42x38x17mm

Function of Button

Set:

- 1) Short press once: Switch current device function
- 2) Short press twice: Switch frequency
- 3) Short press three times: Enable/disable memory function. LED strip blinks 3 times to indicate enable/disable of memory function successfully (default is disabled, memory function remembers the on/off status before power outage)
- 4) Long press for 3 seconds: Reset controller (reback to RGB CCT after resetting)

On/Off, Dimmer:

Short press: Power On/Off.
Long press: Adjust brightness (Assuming: Long press increases brightness, release and long press again decreases brightness).

Push:

Short press: Power On/Off.
Long press: Adjust brightness (Assuming: Long press increases brightness, release and long press again decreases brightness).

Frequency Settings

In order to be applicable to different power supplies, the frequency of device is selectable as 600Hz, 800Hz, 1000Hz, 2000Hz, 4000Hz, 8000Hz with default frequency 1000Hz. **Short press twice "Set" key**, the frequency will switch into the next one. The indicator will flash in Pink color and resume to previous color after "off" for 2 seconds. The rule of indicator flashing times for different frequency please refer to table

1000Hz → 2000Hz → 4000Hz → 8000Hz → 600Hz → 800Hz → 1000Hz

	600Hz	800Hz	1000Hz	2000Hz	4000Hz	8000Hz
Flashing times	1	2	3	4	5	6

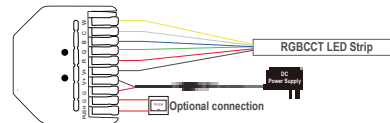
Indicator Light Status

White	RGB CCT
Yellow	RGBW
Blue	RGB
Green	CCT
Red	Dimmer
Purple	Frequency switching

Wiring Diagram

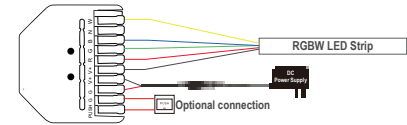
RGB CCT:

Under RGB CCT function, the RGB CCT strip can be connected to the device.



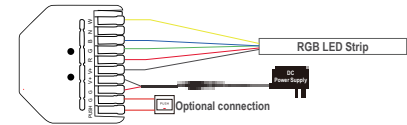
RGBW:

Under RGBW function, the RGBW strip can be connected, without any connection to "N" terminal.



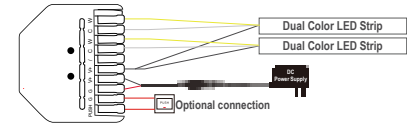
RGB:

Under RGB function, the RGB strip can be connected, without any connection to "N" terminal.



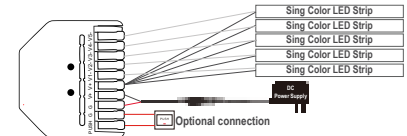
CCT:

Under CCT function, two pieces of CCT strips can be connected, without any connection to "N" terminal, but the light strips will be controlled simultaneously.



DIMMER:

Under dimmer function, five pieces of single color strips can be connected, but the light strips will be controlled simultaneously.



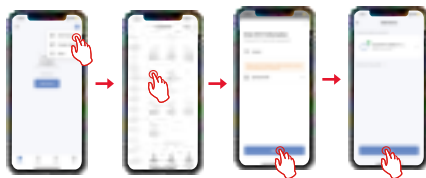
Configuration Steps

Wi-Fi Configuration Steps:

1. Connect the controller to power correctly.
2. Enter the Smart Life APP, then click " + " in the top right corner, select "Add Device".
3. Swipe up on the left side of the screen, find "Lighting", and click on the "Light Source (Wi-Fi)" icon.
4. Follow the instructions in the app to add the controller to wifi.
5. Once add successfully, you can start using the controller.

Bluetooth Configuration Steps:

1. Turn on the Bluetooth function on your phone and power on the controller.
2. Enter the Smart Life APP, then click " + " in the top right corner, select "Add Device".
3. Swipe up on the left side of the screen, find "Lighting", and click on the "Light Source (BLE)" icon.
4. Follow the instructions in the app to add the controller to wifi.
5. Power off the router connected during pairing, turn off the phone's WiFi, only turn on Bluetooth and 4G Mobile internet, then wait for 3-5 minutes to use the controller via Bluetooth.

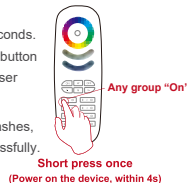


Remote Control Pairing/Unpairing

Pairing:

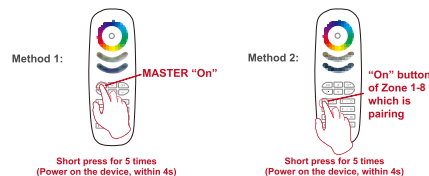
- ① Turn off the controller, then power on after 10 seconds.
- ② Within 4 seconds of powering on, press the "On" button of any group on the RF remote control (see the user manual of each remote control for details).

- ③ When the light strip connected to the controller flashes, it indicates connect with the remote control successfully.



Unpairing:

- ① Turn off the controller, then power on after 10 seconds.
- ② Within 4 seconds of powering on, press the "Master On" button on the RF remote control or press the "On" button of the controller's group 5 times.
- ③ When the light strip connected to the controller flashes, it indicates a disconnection from the remote control.



Compatible with 2.4G RF Remote Control

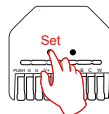


Mode Description

1. Static Warm white
2. Static Day white color
3. Static Cold white
4. Static Red color
5. Static Green color
6. Static Blue color
7. 16 Million Color Gradient
8. RGB Color Jumping
9. Color Breathing (Brightness gradually changes from 100% to 0%, then back to 100% to 0% in sequence. Adjusting color or color temperature can switch colors in this mode, press the "M" key to exit this mode).

Reset Method

Press and hold the Set button for more than 3 seconds, the light strip flashes 1 times, indicating the reset is complete.



Attention

1. Before turning on the power, please ensure that all wiring is correct and secure. Do not operate while the power is on.
2. Use the product under the rated voltage, Overvoltage or undervoltage may cause damage.
3. Do not disassemble the product, as it may cause fire and electric shock.
4. Do not use the product in direct sunlight, damp, high-temperature, or other harsh environments.
5. Do not use the product in metal shielded areas or near strong magnetic fields, as it will severely affect the wireless signal transmission of the product.

DISCLAIMERS

- * Due to our continuous adoption of new technologies, the product specifications may change without prior notice.
- * This manual is for reference and guidance purposes only. It does not guarantee complete consistency with the actual product. Please refer to the actual product for practical applications.
- * The components and accessories described in this manual do not represent the standard configuration of the product. The specific configuration is subject to the package contents.
- * All text, tables, and images in this manual are protected by relevant national laws and may not be used without our company's permission.
- * This product is compatible with third-party products (such as apps, hubs, etc.) as stated in the gateway compatibility chart. However, our company takes no responsibility for any issues that may arise from changes made by third-party products, resulting in incompatibility or the partial loss of functionality.



LED-Trading Tobias Ebert

Schoeneicher Str. 42, Schoeneiche b. Berlin, Germany, 15566

0049 30 641 689 17 info@led-trading.de