

1



This Quick installation guide provides a brief overview of the CZone – MasterBus Bridge Interface installation. Refer to the *CZone Configuration Tool Instructions*, for information on how to setup the MasterBus Bridge Interface (MBI).

2



Safety instructions

- Use the MBI following the instructions and specifications stated in this document.
- Only use the MBI in a technical correct condition.
- Do not work on an electrical system if it is still connected to a current source.

NAVICO GROUP does not hold itself liable for:

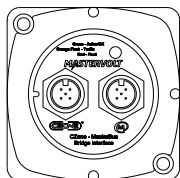
- Damage resulting from the use of the MBI;
- Possible errors in the included manual and the consequences of these;
- Use that is inconsistent with the purpose of the product.

3

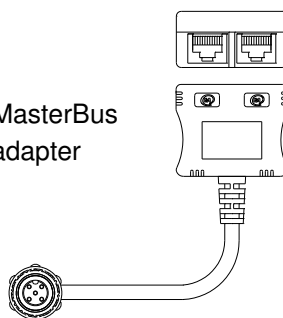
Check the contents of the delivery. Contact your supplier if one of the items is missing.

Do not use the MBI if it is damaged!

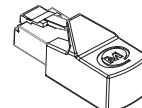
CZone - MasterBus
Bridge Interface



MasterBus
adapter



MasterBus
Terminator

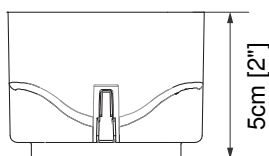
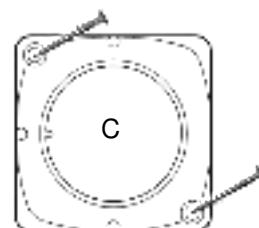
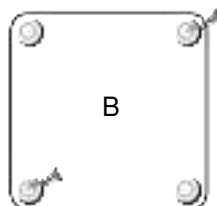
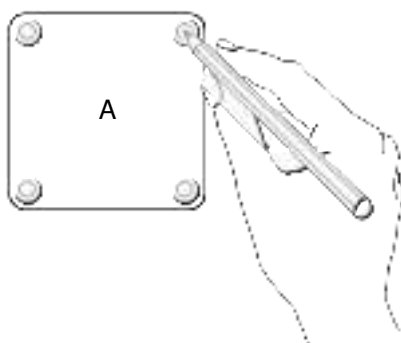
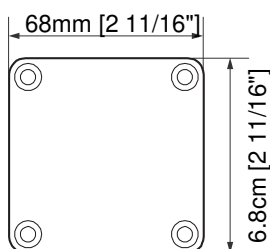


4

Select a location where the surface material is sturdy, and the LED can be seen.

The minimum installation height including connectors is 10cm [4"].

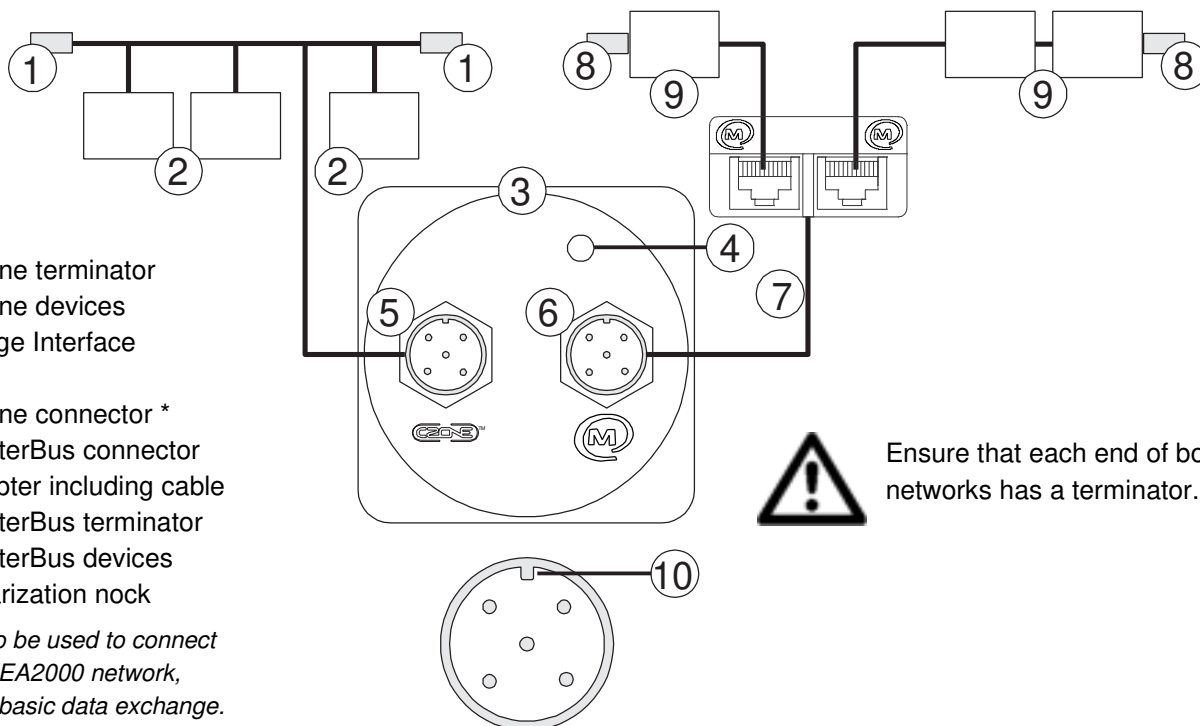
- Remove the lower mounting plate from the MBI to use as a template and mark the position of the four holes to be drilled. Drill the holes (3.5mm [9/16"]).
- Secure the two blind holes of the base with two (short 4mm) screws.
- Mount the MBI to its bottom plate and fix with two (long 4mm) screws.



5

Secure the battery in place. Choose the option that best fits the position.

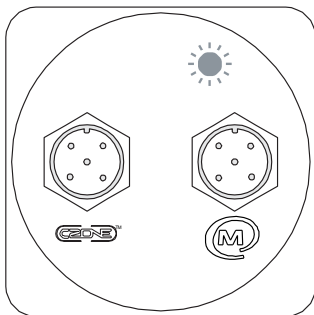
Wire the interface like indicated. The CZone connector must be plugged at the left-hand side (5), the MasterBus connector at the right (6). Notice the polarization nock (10).



Ensure that each end of both networks has a terminator.

6

Check if the CZone - MasterBus Bridge Interface works correctly.



LED (4) functions:

- Green: Active/OK, CZone (5) and MasterBus (6) connected.
- Orange flashing: Traffic, communication.
- Red: Fault, no connection.

If there is no connection, first check the cables, then the configuration of the CZone and MasterBus networks.

SPECIFICATIONS

MODEL:	CZONE MASTERBUS BRIDGE INTERFACE
Product code:	80-911-0072-00
Delivered with:	MasterBus cable adapter, MasterBus Terminator
Current consumption:	60 mA, 720 mW
MasterBus Powering:	No
Din rail mounting:	No
Protection degree:	IP65
Weight:	145g [0.3 lb], excluding cable adapter
Dimensions:	69 x 69 x 50 mm [2.7 x 2.7 x 2.0 inch]



Do not dispose of with normal household waste! Act according to local rules.