

# FLEX<sup>®</sup> SYSTEM

## For installation under carpet tile

Updated  
01.26.2022



# CONNECTRAC<sup>®</sup>

A brand of  **legrand**



# HOW WE CAN HELP

## Online

Build your own Flex® raceway system using our innovative web tool on the Connectrac website!

Click around and play in this online experience while learning the basics of how Flex works.

[\*connectrac.com/build-your-own\*](https://connectrac.com/build-your-own)

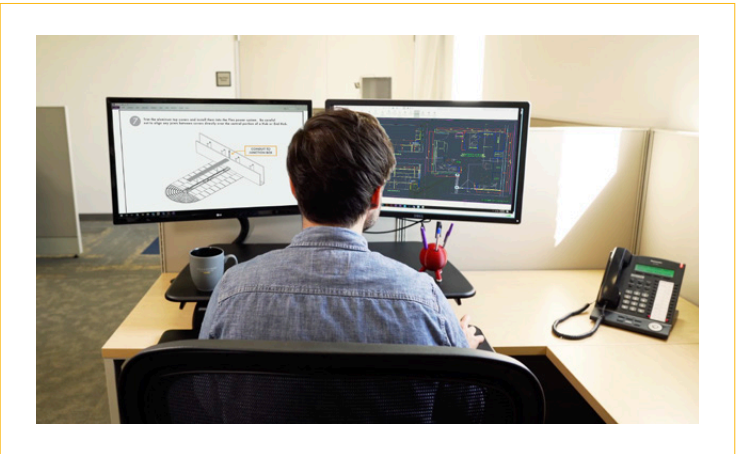


## Design Team Services

Connectrac® believes in providing exceptional customer service by offering unique resources like our Design Team.

These industry specialists are available to help you specify the best Flex solution for your next project.

[\*connectrac.com/design-services\*](https://connectrac.com/design-services)



## General Info & Questions

Contact us any time! | ☎ 877.480.5637 | ✉ [info@connectrac.com](mailto:info@connectrac.com) | 🌐 [connectrac.com](https://connectrac.com)

# TABLE OF CONTENTS

What is Flex®?	Pg 4
How it Works	Pg 6
Get Started	Pg 8
Flex Data Capacity	Pg 9



# FLEX SYSTEM

## For installation under carpet tile



**HUDDLE**

**MEET**

**WORK**

### Connectrac Flex® is...

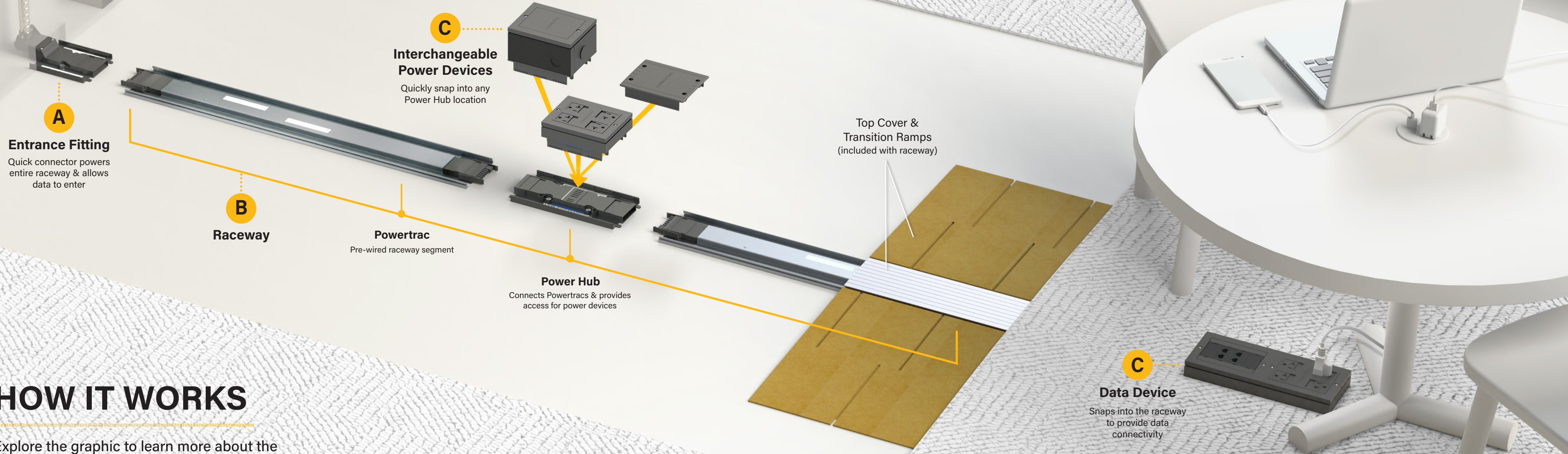
A floor-based power and data distribution system that allows users to quickly add connectivity or change power locations in a snap.

Any Space. Any Building. Any Time.®



# HOW IT WORKS

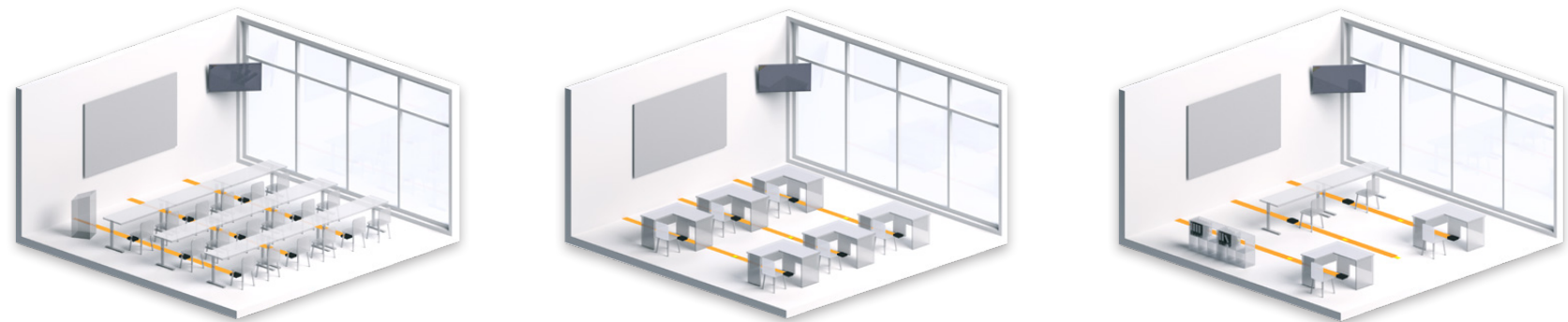
Explore the graphic to learn more about the Flex system for installation under carpet tile.





# Plan Flex Raceway System

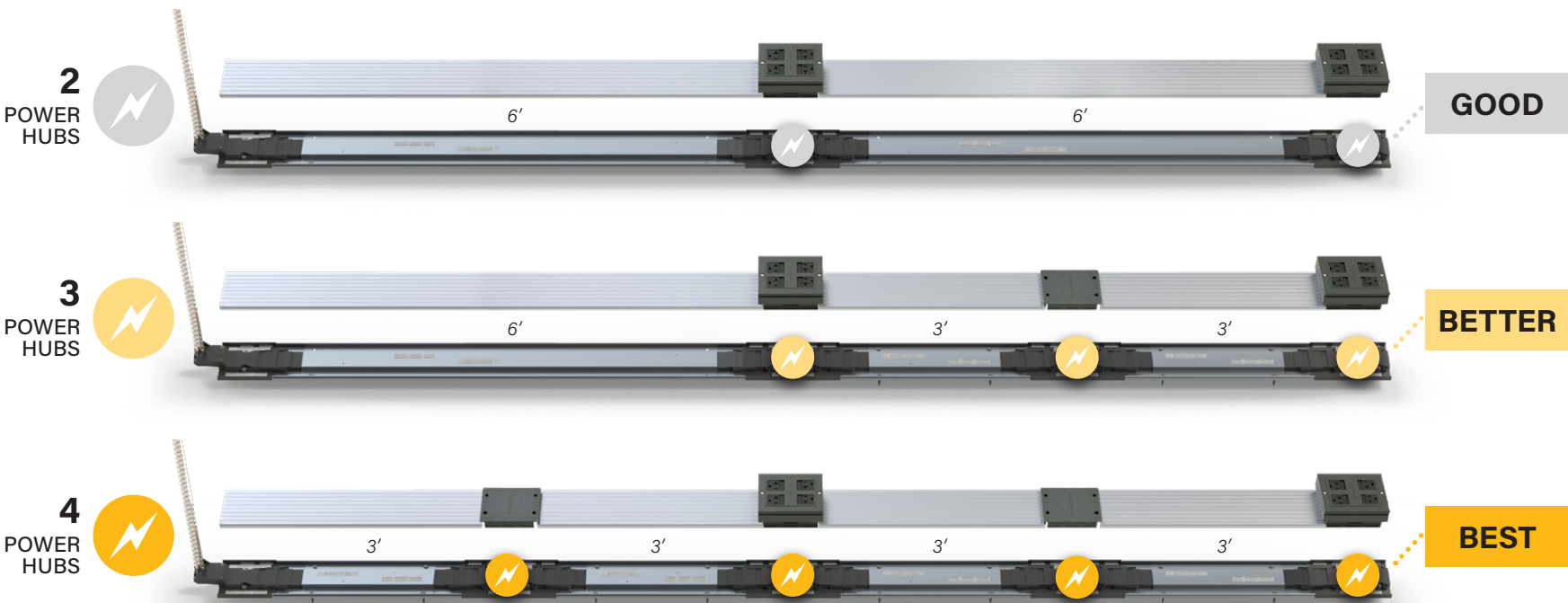
TIP: Visualize how your space might adapt and evolve over time.



What is the current use of this space?      What else might it be used for in the future?      How might furniture be rearranged?

## Optimize Your Raceway

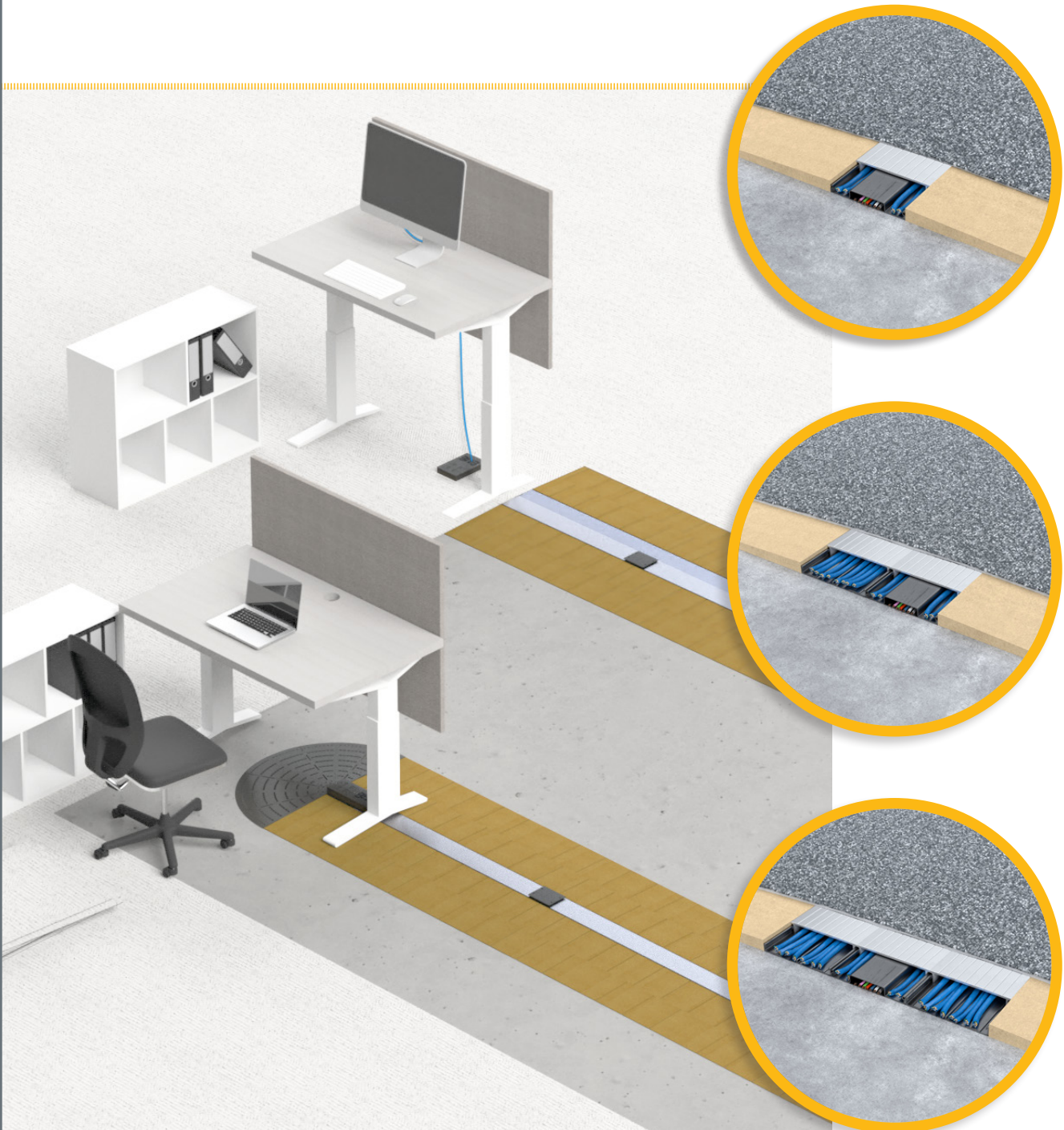
Increase your system's adaptability by adding *more* points of power access.



⚡ Power Hubs = access points for power devices

TIP: For greater flexibility at minimal cost, add more Power Hubs and connect shorter Powertracs.

# How much data do you need?



## 0-4 cables

Typical for conference rooms

Turn to Next Page

## 5-14 cables

Typical for up to seven workstations

Turn to Page 16

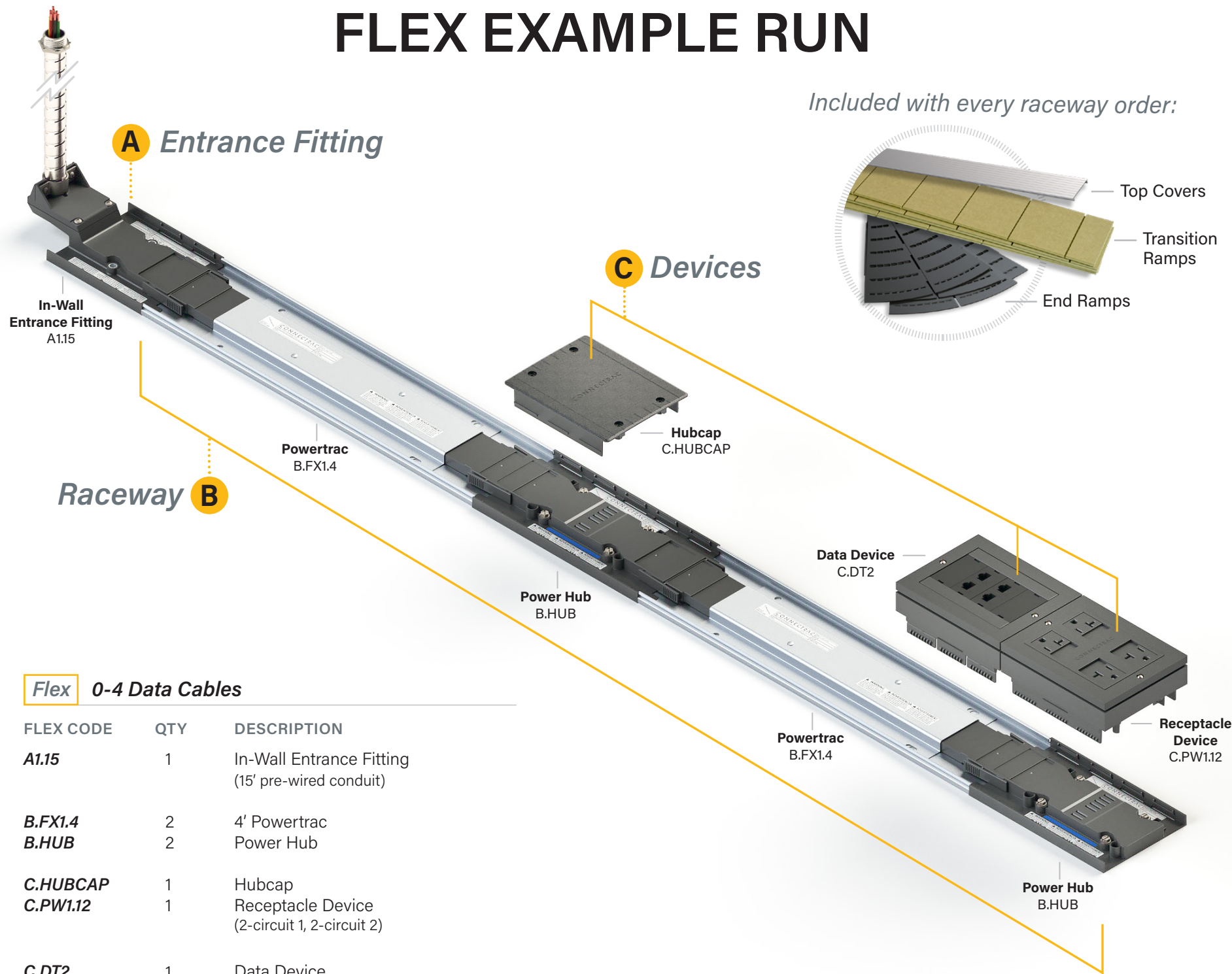
## 15-24 cables

Typical for up to twelve workstations

Turn to Page 22



# FLEX EXAMPLE RUN

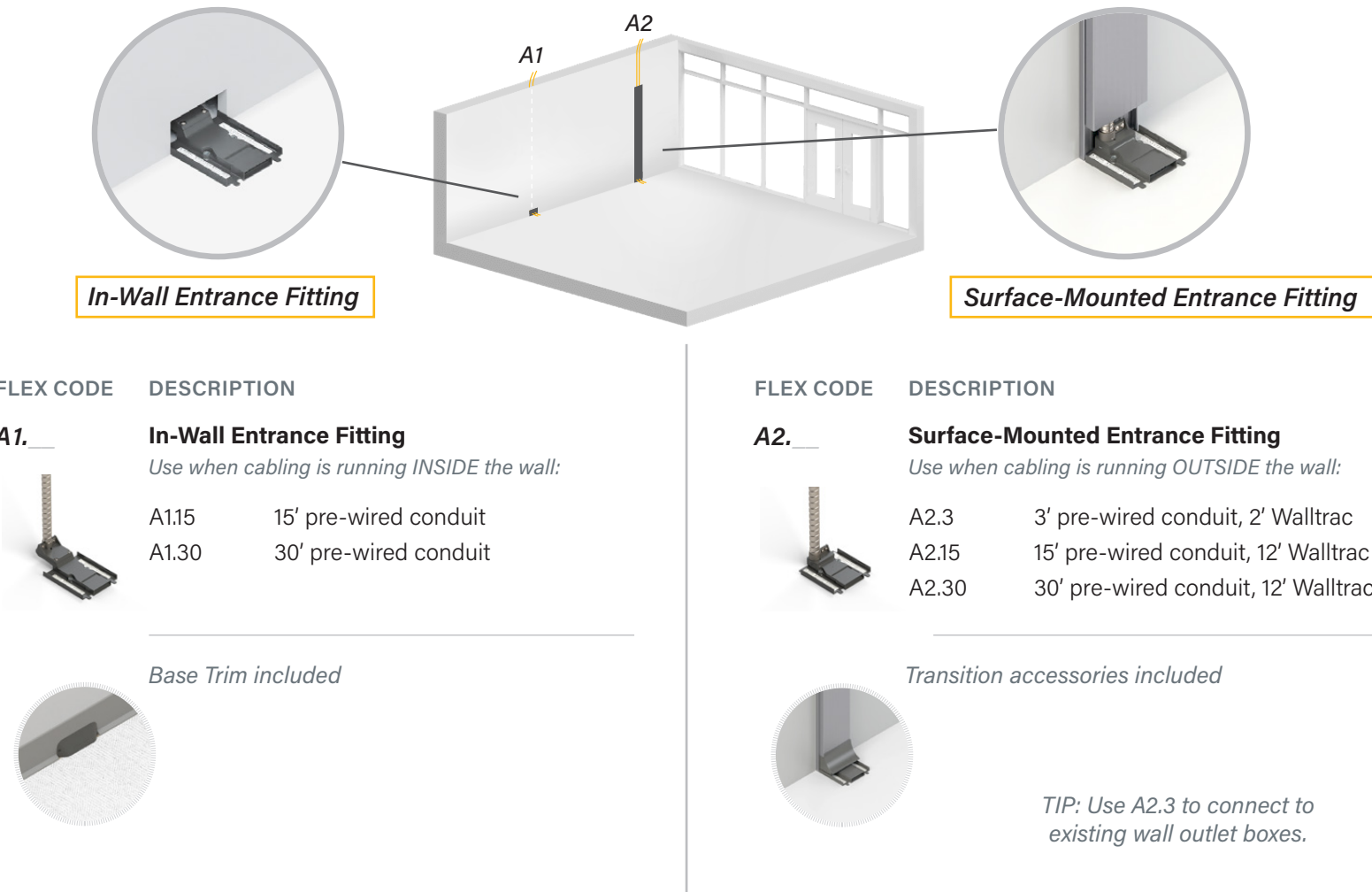


## Flex 0-4 Data Cables

FLEX CODE	QTY	DESCRIPTION
A1.15	1	In-Wall Entrance Fitting (15' pre-wired conduit)
B.FX1.4	2	4' Powertrac
B.HUB	2	Power Hub
C.HUBCAP	1	Hubcap
C.PW1.12	1	Receptacle Device (2-circuit 1, 2-circuit 2)
C.DT2	1	Data Device

# A Entrance Fitting

Choose how your Flex raceways start at the wall.





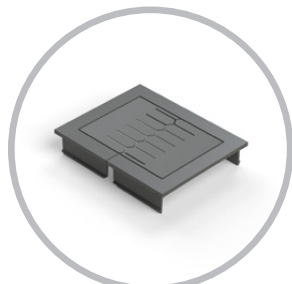




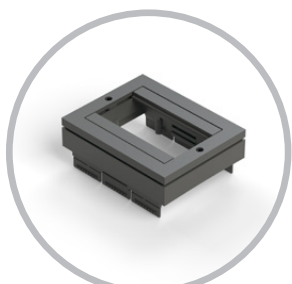
# C Devices

Equip your Flex raceway system with power & data devices.

**Data Devices** These devices go anywhere on the raceway.



Grommet



Data Device

Data devices easily snap next to any power device.

FLEX CODE	DESCRIPTION
C.DT1	<b>Grommet</b> Allows cables to enter/exit raceway
C.DT2	<b>Data Device</b> Fits up to 8 low-voltage keystone modules



# Optional Accessories

Enhance your raceways with these additional options.

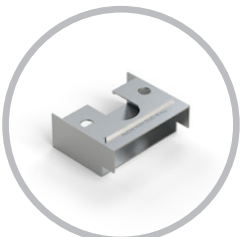


## Accessories

FLEX CODE	DESCRIPTION
VWM	<b>Vertical Wire Manager</b> Attaches to any power or data device to manage cabling
RIF	<b>Rough-In Frame</b> Installed before drywall to provide a rough opening for cabling
C.HUBCAP	<b>Extra Hubcap</b> Creates a walkable surface and makes power easily accessible for future needs



Vertical Wire Manager



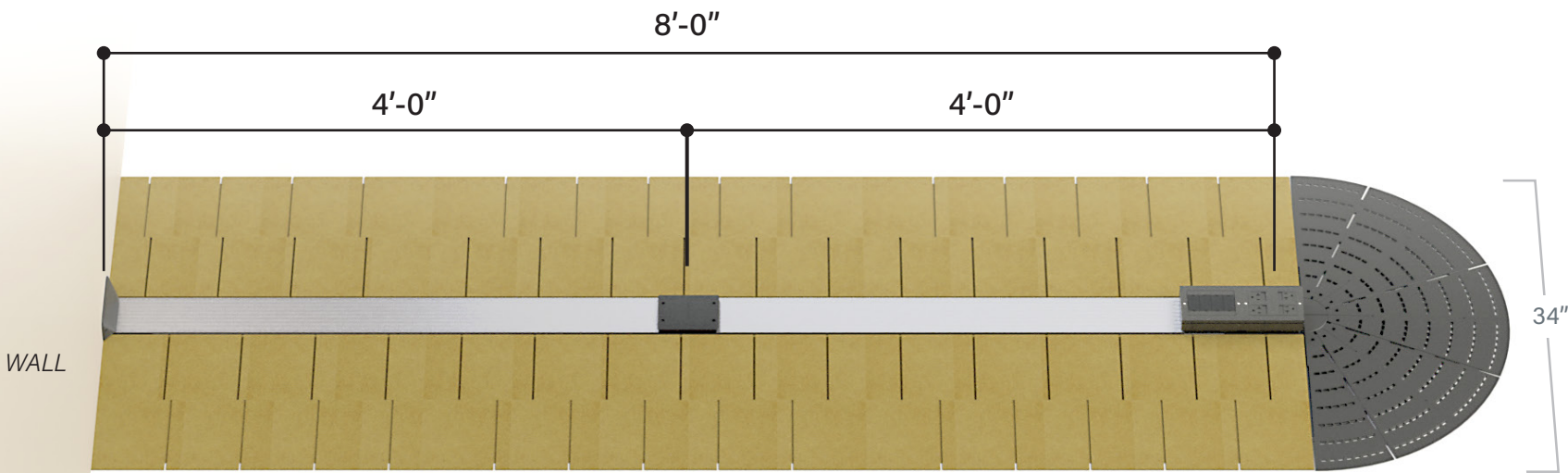
Rough-In Frame



Extra Hubcap

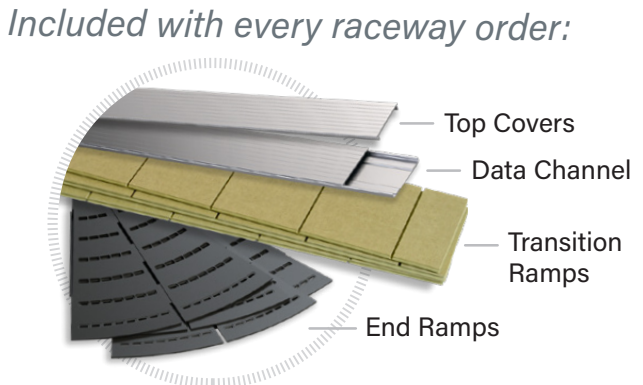
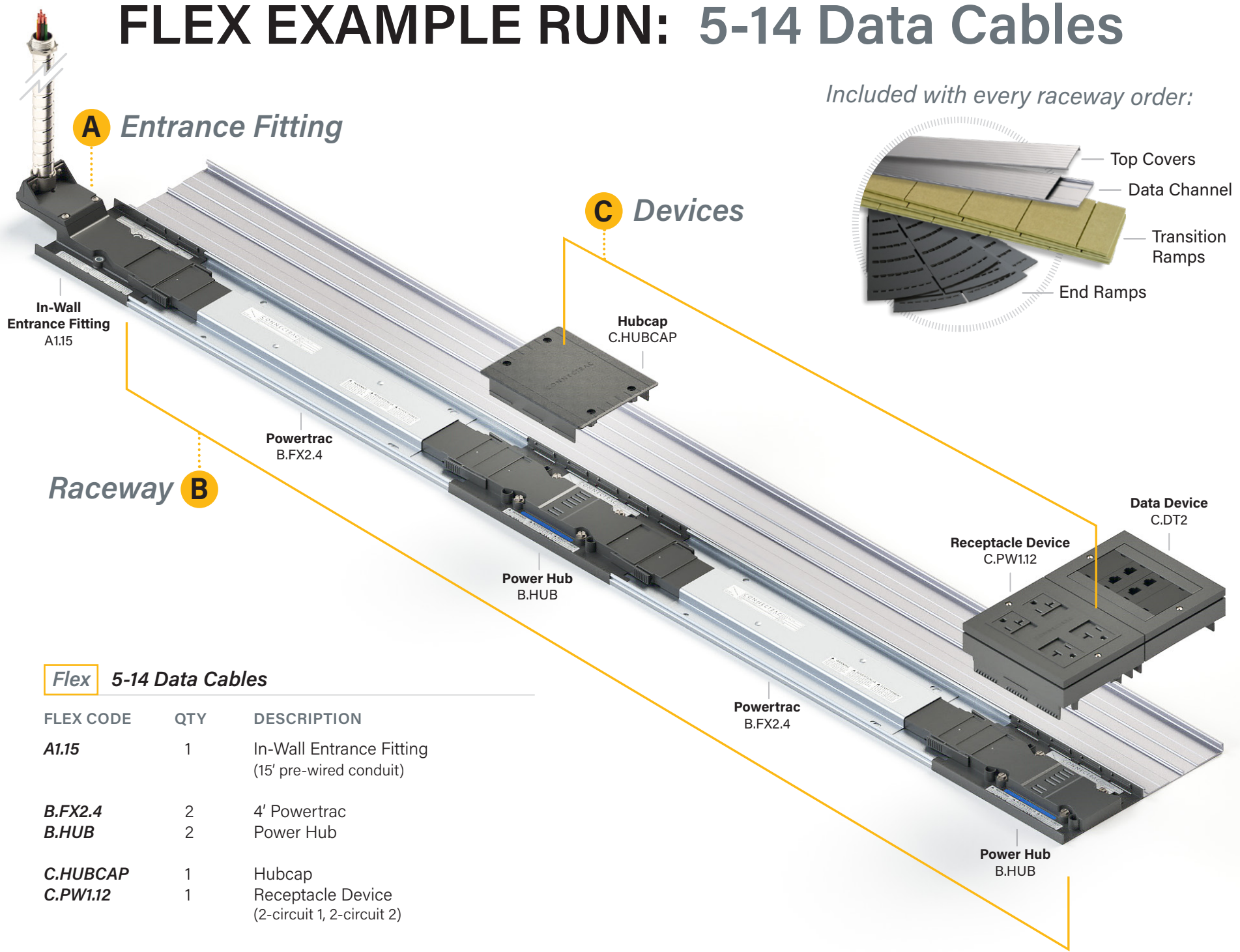
# Complete Raceway

Shown with Top Covers, Transition Ramps, and End Ramps installed.





# FLEX EXAMPLE RUN: 5-14 Data Cables

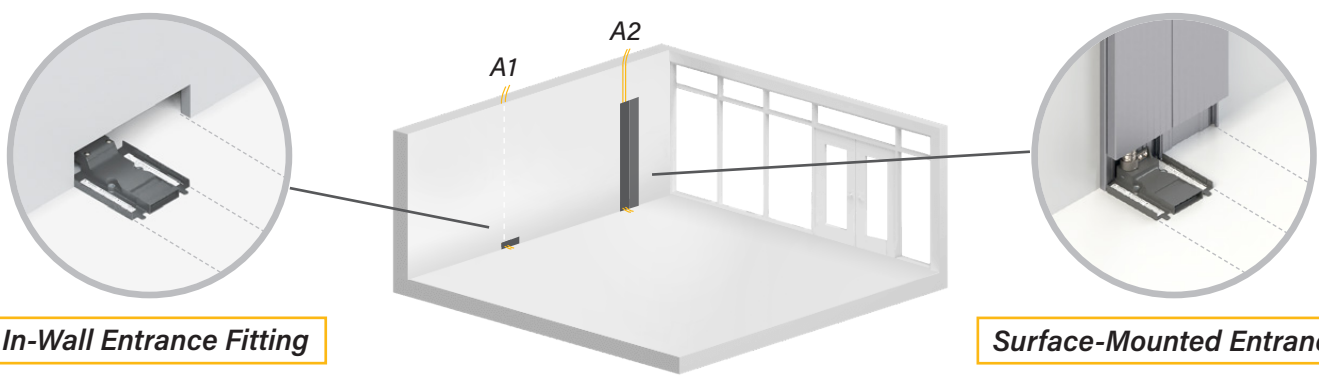


**Flex** 5-14 Data Cables

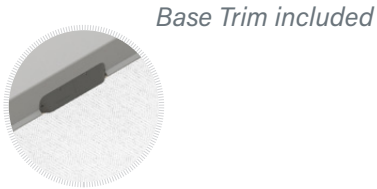
FLEX CODE	QTY	DESCRIPTION
A1.15	1	In-Wall Entrance Fitting (15' pre-wired conduit)
B.FX2.4	2	4' Powertrac
B.HUB	2	Power Hub
C.HUBCAP	1	Hubcap
C.PW1.12	1	Receptacle Device (2-circuit 1, 2-circuit 2)
C.DT2	1	Data Device

## A Entrance Fitting

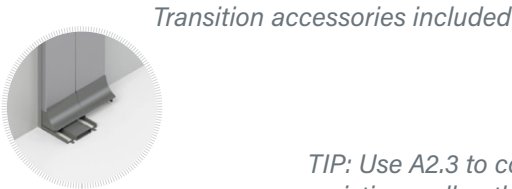
Choose how your Flex raceways start at the wall.



FLEX CODE	DESCRIPTION
A1.____	<b>In-Wall Entrance Fitting</b> <i>Use when cabling is running INSIDE the wall:</i>
A1.15	15' pre-wired conduit
A1.30	30' pre-wired conduit



FLEX CODE	DESCRIPTION
A2.____	<b>Surface-Mounted Entrance Fitting</b> <i>Use when cabling is running OUTSIDE the wall:</i>
A2.3	3' pre-wired conduit, 2' Walltrac
A2.15	15' pre-wired conduit, 12' Walltrac
A2.30	30' pre-wired conduit, 12' Walltrac



TIP: Use A2.3 to connect to existing wall outlet boxes.





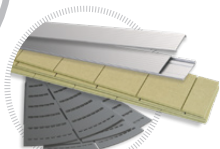
# B Raceway

Continue to build your raceways by connecting Powertracs and Power Hubs.

## Powertracs



Powertrac



Top Covers, Data Channel & Ramps included

### FLEX CODE

B.FX2.\_\_\_\_

### DESCRIPTION

#### Powertrac

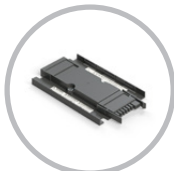
Pre-wired raceway segments available in standard lengths:

B.FX2.2	2' Powertrac
B.FX2.3	3' Powertrac
B.FX2.4	4' Powertrac
B.FX2.5	5' Powertrac
B.FX2.6	6' Powertrac

B.FX2.EXT

#### Powertrac Extender

Adds 6" to any of our standard Powertrac lengths

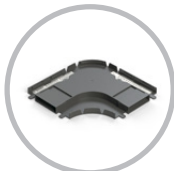


Powertrac Extender

B.FX2.90

#### Powertrac Corner

Allows raceway to make a 90° turn



Powertrac Corner



Datatrak Corner included

## Power Hub

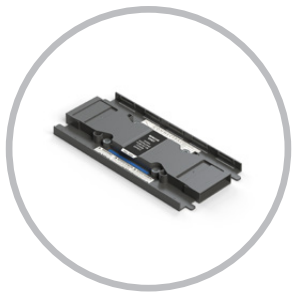
### FLEX CODE

B.HUB

### DESCRIPTION

#### Power Hub

Connects Powertracs & provides access for power devices



Power Hub

TIP: For greater flexibility at minimal cost, add more Power Hubs and connect shorter Powertracs.

# C Devices

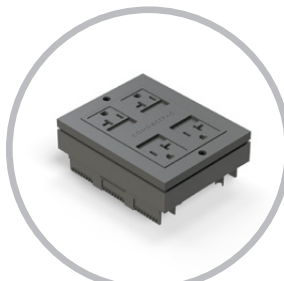
Equip your Flex raceway system with power & data devices.

## Power Devices

Choose which devices (if any) you want to snap into your Power Hubs.



Hubcap



Receptacle Device



Hardwire Device

Power devices are all interchangeable and can be hot-swapped when desired.

### FLEX CODE

C.HUBCAP

### DESCRIPTION

#### Hubcap

Creates a walkable surface and makes power easily accessible for future needs

C.PW1.\_\_\_\_

#### Receptacle Device

Quad device available in various 4-circuit options:

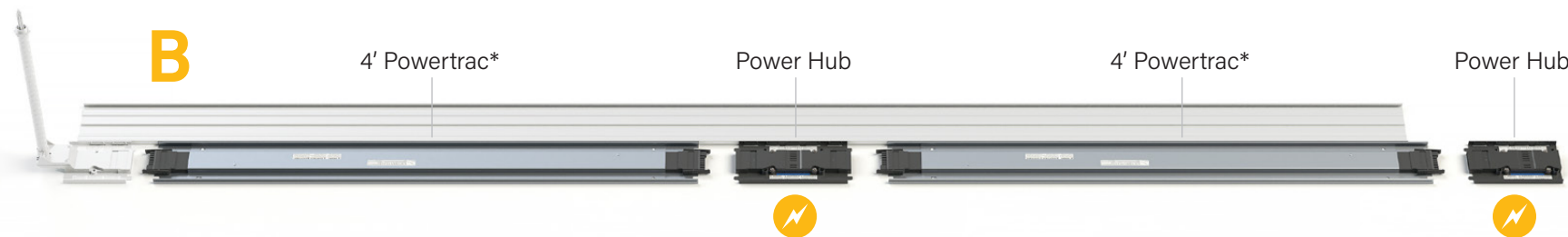
C.PW1.11	All circuit 1
C.PW1.22	All circuit 2
C.PW1.33	All circuit 3
C.PW1.44	All circuit 4
C.PW1.12*	2-circuit 1, 2-circuit 2
C.PW1.34*	2-circuit 3, 2-circuit 4
C.PW1.14*	2-circuit 1, 2-circuit 4

\*Controlled devices available (see Technical Guide for more details)

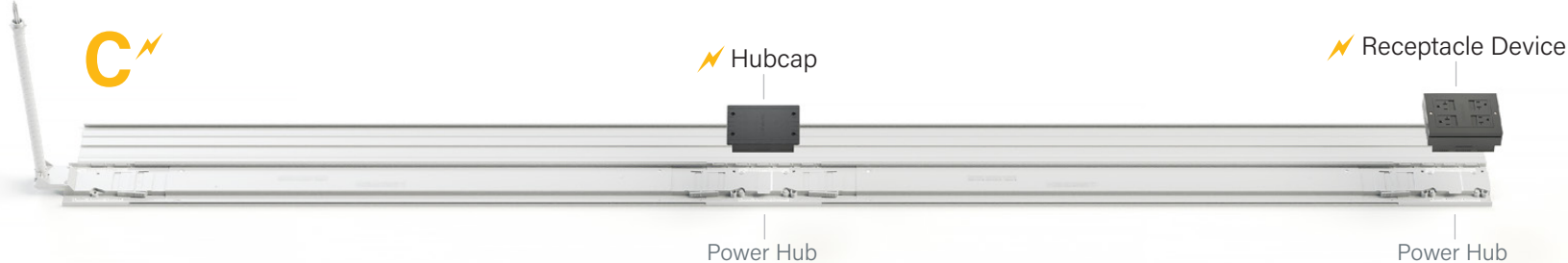
C.PW2.4

#### Hardwire Device

4-circuit monument that connects to most furniture base feeds



\*Powertrac measurements are based on the on-center distance between the Entrance Fitting and/or Power Hubs.

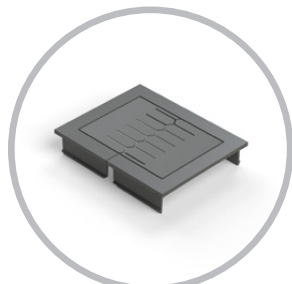




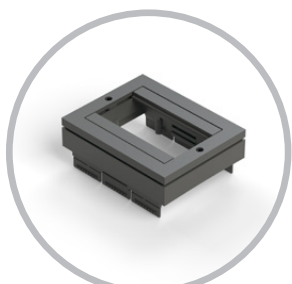
# C Devices

Equip your Flex raceway system with power & data devices.

**Data Devices** These devices go anywhere on the raceway.



Grommet



Data Device

Data devices easily snap next to any power device.

FLEX CODE	DESCRIPTION
C.DT1	<b>Grommet</b> Allows cables to enter/exit raceway
C.DT2	<b>Data Device</b> Fits up to 8 low-voltage keystone modules



# Optional Accessories

Enhance your raceways with these additional options.

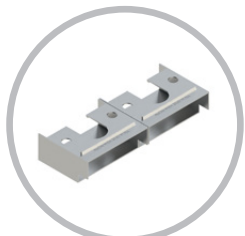


## Accessories

FLEX CODE	DESCRIPTION
VWM	<b>Vertical Wire Manager</b> Attaches to any power or data device to manage cabling
RIF	<b>Rough-In Frame</b> Installed before drywall to provide a rough opening for cabling
C.HUBCAP	<b>Extra Hubcap</b> Creates a walkable surface and makes power easily accessible for future needs



Vertical Wire Manager



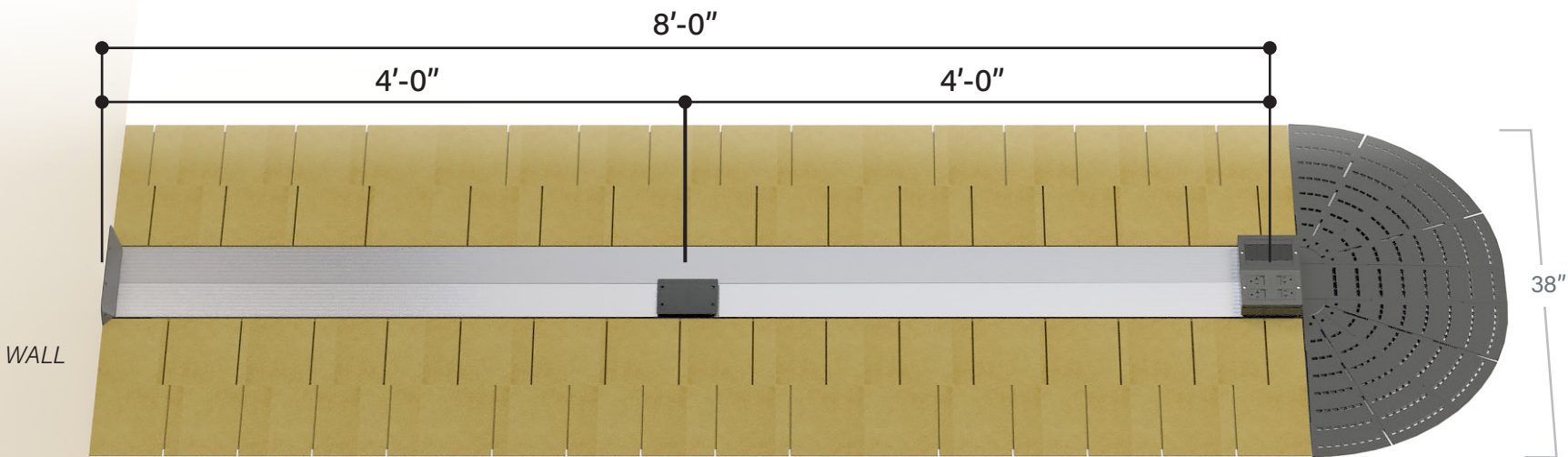
Rough-In Frame



Extra Hubcap

# Complete Raceway

Shown with Top Covers, Transition Ramps, and End Ramps installed.





# FLEX EXAMPLE RUN: 15-24 Data Cables

**A Entrance Fitting**

In-Wall Entrance Fitting A1.15

**B Raceway**

Powertrac B.FX3.4

Power Hub B.HUB

Hubcap C.HUBCAP

Receptacle Device C.PW1.12

Data Device C.DT2

Powertrac B.FX3.4

**C Devices**

Top Covers

Data Channels

Transition Ramps

End Ramps

Flex 15-24 Data Cables		
FLEX CODE	QTY	DESCRIPTION
A1.15	1	In-Wall Entrance Fitting (15' pre-wired conduit)
B.FX3.4	2	4' Powertrac
B.HUB	2	Power Hub
C.HUBCAP	1	Hubcap
C.PW1.12	1	Receptacle Device (2-circuit 1, 2-circuit 2)
C.DT2	2	Data Device

## A Entrance Fitting

Choose how your Flex raceways start at the wall.

**In-Wall Entrance Fitting**

A1

**Surface-Mounted Entrance Fitting**

A2

FLEX CODE	DESCRIPTION
<b>A1.</b>	<b>In-Wall Entrance Fitting</b> Use when cabling is running <i>INSIDE</i> the wall:
A1.15	15' pre-wired conduit
A1.30	30' pre-wired conduit

Base Trim included

FLEX CODE	DESCRIPTION
<b>A2.</b>	<b>Surface-Mounted Entrance Fitting</b> Use when cabling is running <i>OUTSIDE</i> the wall:
A2.3	3' pre-wired conduit, 2' Walltrac
A2.15	15' pre-wired conduit, 12' Walltrac
A2.30	30' pre-wired conduit, 12' Walltrac

Transition accessories included

*TIP: Use A2.3 to connect to existing wall outlet boxes.*





B

Raceway

Continue to build your raceways by connecting Powertracs and Power Hubs.



Powertrac

**Powertracs**

FLEX CODE	DESCRIPTION
<b>B.FX3.</b> __	<b>Powertrac</b> <i>Pre-wired raceway segments available in standard lengths:</i>
B.FX3.2	2' Powertrac
B.FX3.3	3' Powertrac
B.FX3.4	4' Powertrac
B.FX3.5	5' Powertrac
B.FX3.6	6' Powertrac

*Top Covers, Data Channels & Ramps included*



Powertrac Extender

**B.FX3.EXT**


**Powertrac Extender**  
*Adds 6" to any of our standard Powertrac lengths*



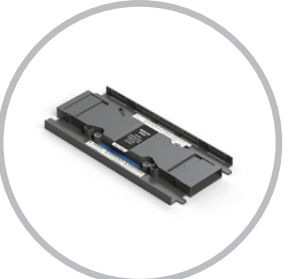
Powertrac Corner

**B.FX3.90**

**Powertrac Corner**  
*Allows raceway to make a 90° turn*



Datatrac Corners included

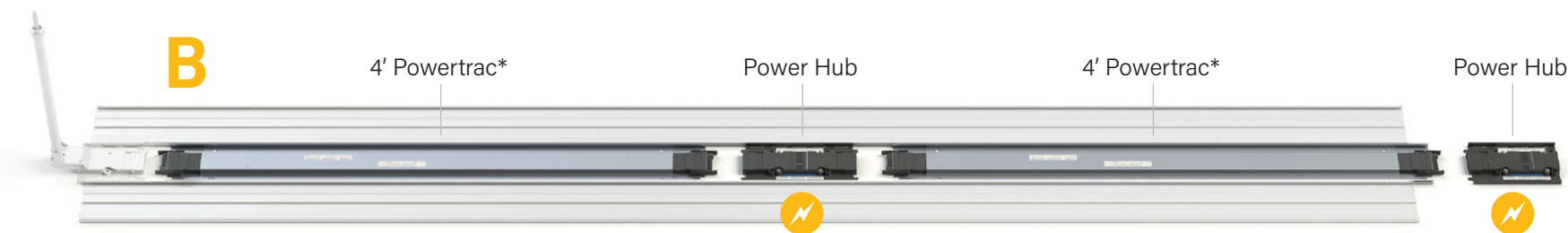


Power Hub

**Power Hub**

FLEX CODE	DESCRIPTION
<b>B.HUB</b>	<b>Power Hub</b> <i>Connects Powertracs &amp; provides access for power devices</i>

*TIP: For greater flexibility at minimal cost, add more Power Hubs and connect shorter Powertracs.*




\*Powertrac measurements are based on the on-center distance between the Entrance Fitting and/or Power Hubs.

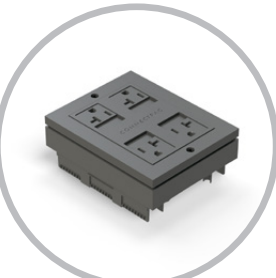
C

Devices


Equip your Flex raceway system with power & data devices.



Hubcap



Receptacle Device



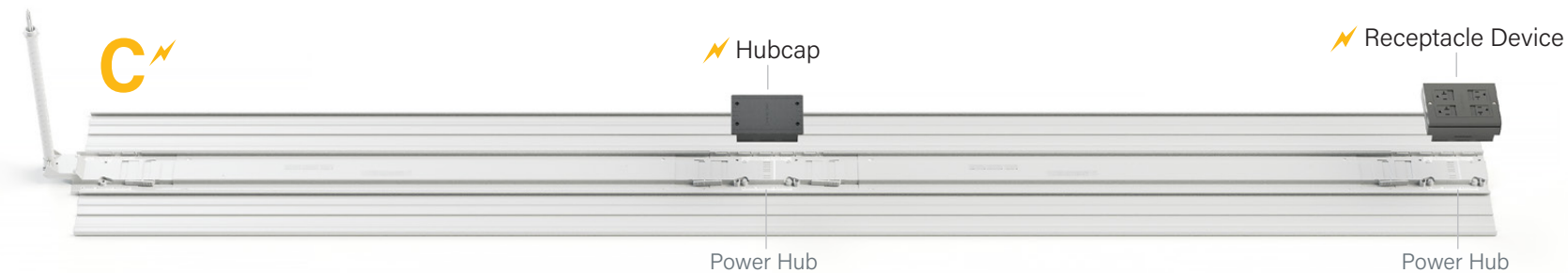
Hardwire Device

Power devices are all interchangeable and can be hot-swapped when desired.

**Power Devices**

*Choose which devices (if any) you want to snap into your Power Hubs.*

FLEX CODE	DESCRIPTION
<b>C.HUBCAP</b>	<b>Hubcap</b> <i>Creates a walkable surface and makes power easily accessible for future needs</i>
<b>C.PW1.</b> __	<b>Receptacle Device</b> <i>Quad device available in various 4-circuit options:</i>
C.PW1.11	All circuit 1
C.PW1.22	All circuit 2
C.PW1.33	All circuit 3
C.PW1.44	All circuit 4
C.PW1.12*	2-circuit 1, 2-circuit 2
C.PW1.34*	2-circuit 3, 2-circuit 4
C.PW1.14*	2-circuit 1, 2-circuit 4
<i>*Controlled devices available (see Technical Guide for more details)</i>	
<b>C.PW2.4</b>	<b>Hardwire Device</b> <i>4-circuit monument that connects to most furniture base feeds</i>



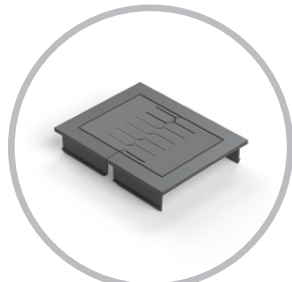


# C Devices

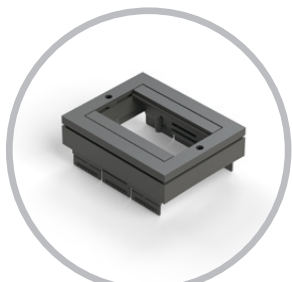
Equip your Flex raceway system with power & data devices.

## Data Devices

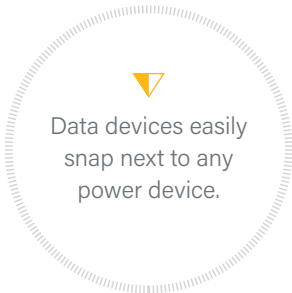
These devices go anywhere on the raceway.



Grommet



Data Device



FLEX CODE	DESCRIPTION
C.DT1	<b>Grommet</b> <i>Allows cables to enter/exit raceway</i>
C.DT2	<b>Data Device</b> <i>Fits up to 8 low-voltage keystone modules</i>



# Optional Accessories

Enhance your raceways with these additional options.

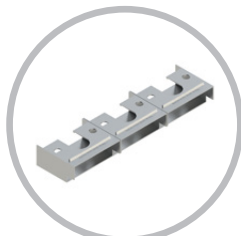


## Accessories

FLEX CODE	DESCRIPTION
VWM	<b>Vertical Wire Manager</b> <i>Attaches to any power or data device to manage cabling</i>
RIF	<b>Rough-In Frame</b> <i>Installed before drywall to provide a rough opening for cabling</i>
C.HUBCAP	<b>Extra Hubcap</b> <i>Creates a walkable surface and makes power easily accessible for future needs</i>



Vertical Wire Manager



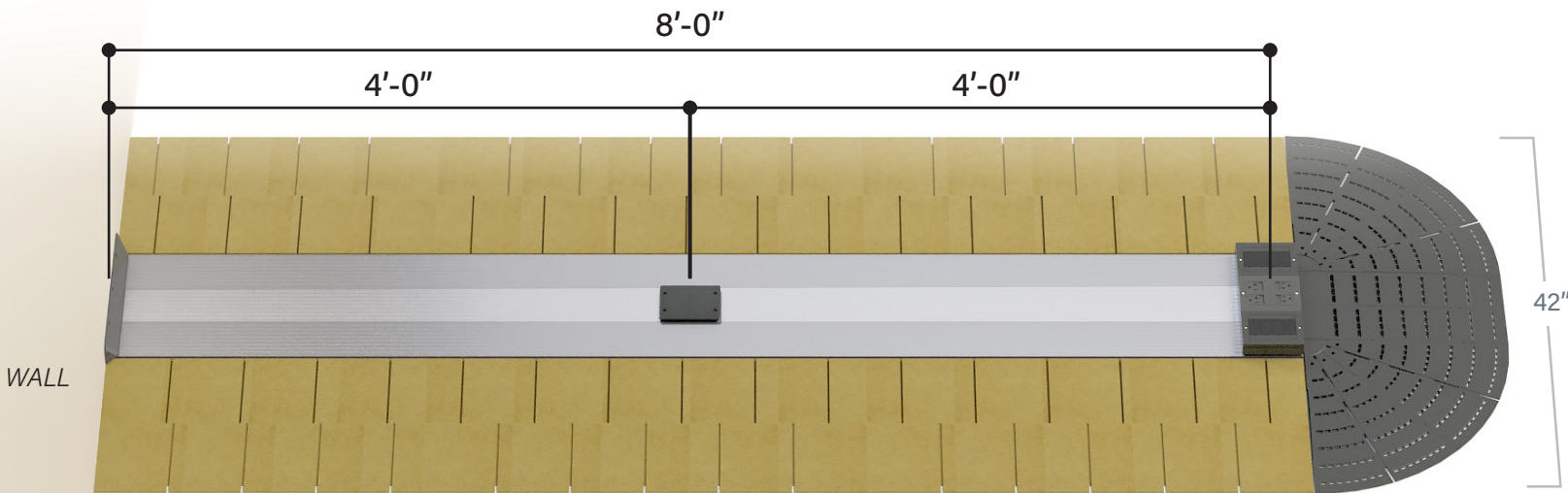
Rough-In Frame



Extra Hubcap

# Complete Raceway

Shown with Top Covers, Transition Ramps, and End Ramps installed.





**CONNECTRAC.**

A brand of  **legrand**

8707 Chancellor Row

Dallas, Texas 75247

1.877.480.5637

[connectrac.com](https://connectrac.com)

FOLLOW US

