

Kalado

Wi-Fi Automatic Feeder

User Manual

KPF01



Safety information

WARNING !

- Do NOT use wet, canned or moist food.
- Do NOT use outdoors. For indoor household use only.
- Do NOT allow small children to play with, in or around pet feeder.
- Do NOT place anything on top of the pet feeder. The unit starts automatically. Keep clear.
- Base unit should NOT be submerged in water at any time, as this may damage electronic components.
- Always unplug any appliance when not in use, before putting on or taking off parts and before cleaning.
- Do NOT pull on the electrical power cord to remove the plug from the wall outlet.
- To avoid tripping, always position power cord out of the way of foot traffic.
- The use of attachments not recommended or sold by the manufacturer may cause an unsafe condition.
- Do NOT modify the pet feeder.
- Do NOT place or store an appliance where it can fall or be pulled into a tub or sink.
- Only use attachments recommended or sold by the manufacturer.
- To reduce the risk of injury, close supervision is necessary when an appliance is used by or near children.
- If the plug of this device gets wet, turn off the electricity to that wall outlet. Do not attempt to unplug.
- To protect against electric shock, if using power cord do not place power cord or plug in water or other liquids.
- Dispose of all packaging materials properly. Some items may be packed in polybags; these bags could cause suffocation; keep away from children and pets.

NOTICE !

- Do not allow pets to chew on or swallow any parts.
- Intended for use with dogs or cats only.
- Do NOT place any foreign object in the pet feeder.
- For dry food use only.
- Pet feeder should be placed on a level surface.

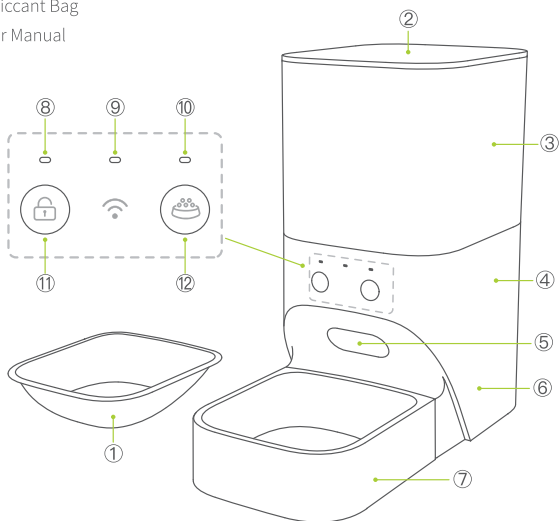
Warranty

1. We provide 12 months limited warranty.
2. Timely customer service via: **pet_support@kaladotech.com**

Product Structure

What's in the box?

- 1 × WiFi Automatic Feeder
- 1 × 5V/1A Power Adapter
- 1 × Desiccant Bag
- 1 × User Manual



- | | | |
|------------------------|-----------------------|-------------------------|
| ① Stainless Steel Bowl | ⑤ Food Outlet | ⑨ Wi-Fi Light |
| ② Lid Latch | ⑥ Battery Compartment | ⑩ Fault Light |
| ③ Food Tank | ⑦ Food Tray | ⑪ Unlock Button |
| ④ Feeder Base | ⑧ Unlock Light | ⑫ Manual Feeding Button |

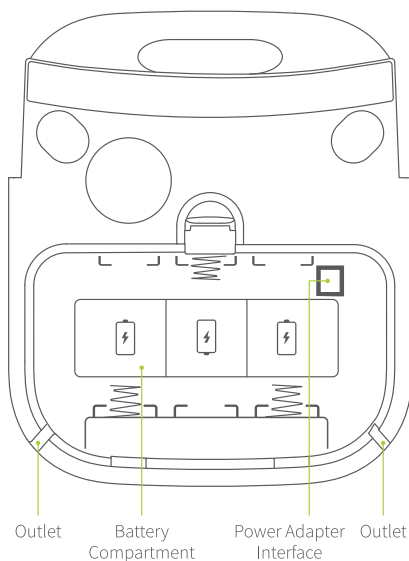
Feeder Installation and Clean

1. Power supply connection.

- Step 1. Open the battery compartment at the bottom of the feeder.
- Step 2. Insert the power adapter cord into the "Power Adapter Interface" , wind the excess power cord as needed and then exit at the "Outlet" .

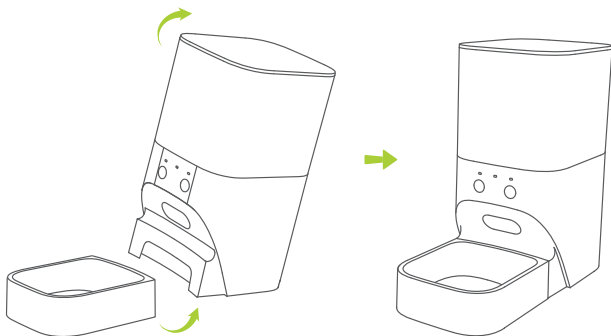
Warm Tips:

1. Use 3 PCS alkaline D batteries(NOT included) to power. Do NOT use rechargeable batteries.
2. Batteries are for back-up power only and should not be used as the main power source.



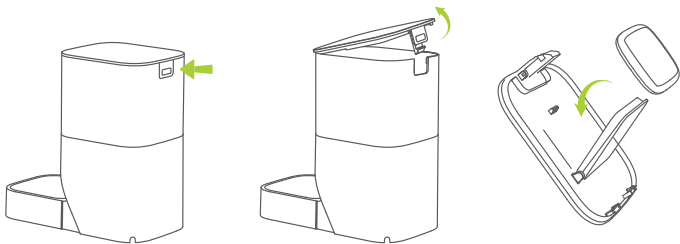
2. Automatic feeder assembly.

Tilt-up the feeder (feeder base and food tank), close the side with the "ears" of the food tray to the gap of the feeder, put down the feeder, and press down on the food tray.

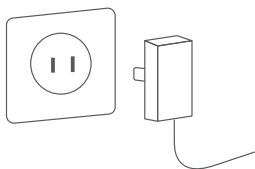


3. Add food to the food tank.

- 1) Open the lid of the food tank: press the button on the back of the food tank, and at the same time lift the lid up.
- 2) Loosen the button on the other side to remove the lid.
- 3) Place Desiccant bag into the buckle of Lid.
- 4) Close the food tank in the reverse order of removing the food tank lid.



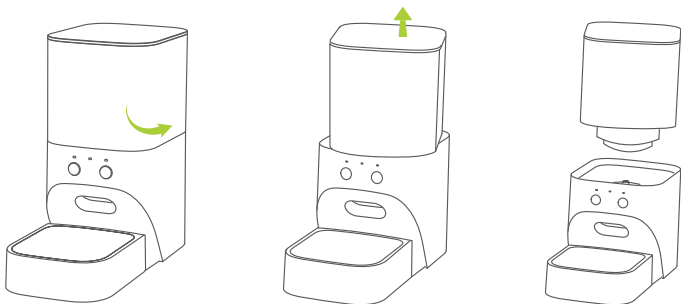
4. Connect power adapter to work.



5. Remove and clean the food tank.

Step 1. Unplug the power adapter from power outlet.

Step 2. Remove the food tank: rotate the food tank counterclockwise and lift it up.



Step 3. Remove the allocate food funnel: turn the food tank over, grab the allocate food funnel, rotate the allocate food funnel counterclockwise and extract it from the top.



App Quickly Setting Guide

Step1. Download the Osaio App

Please search " Osaio " on Google Play / App Store ,
or scanning the QR code to download the App.



Step 2. Ensure the feeder is waiting to be paired

Long press the unlock button and the manual feeding button on the same time until the Wi-Fi indicator light blinks.

Step 3. Turn on bluetooth and Connect your phone to 2.4GHz Wi-Fi

Step 4. log in Osaio App and click “+” to add your automatic feeder

Step 5. Follow the instruction on the App to finish the steps of connection

LED Indicator

LED Indicator & Button operation	Status
Reset tip:Press the unlock button and the manual feeding button at the same time until the Wi-Fi light blinks Slowly	Ready for connection
Rapid blinking Wi-Fi light	Connection is in progress
Solid Wi-Fi light	Connected successfully
Solid fault light	There is not enough food in the food tank. It will go out automatically after adding food
Long press the unlock button until the unlock light turn on	Unlocking status. Manual feeding button available

Warm Tips:

In the unlocked state, the unlock indicator is on. One minute after unlocking, it will automatically enter the locked state, and then the unlock light will go out.

Wi-Fi Setup Troubleshooting

Unable to get my feeder connected, or appears disconnected from Wi-Fi.

1. Ensure your home Wi-Fi is working properly and your phone is connected to it.
2. The feeder supports 2.4GHz Wi-Fi only. Make sure you are in 2.4GHz Wi-Fi circumstance, and ensure the Wi-Fi signal is good.
3. Weak disconnection, place your feeder near your router during initial setup.
4. Reset the feeder: long press the unlock button and the feeding button at the same time until the Wi-Fi light blinking to set up the connection again.
5. The feeder supports Bluetooth automatic connection. Make sure Bluetooth opened on your phone and connected to Wi-Fi. After reset the feeder, open the App and click add device, the feeder will be found and follow the instructions to continue connecting.
6. If still fails connecting, please contact our after-sales support team via:

pet_support@kaladotech.com

Other Troubleshooting

The food won't come out

- 1) Please be sure to fill in with dry food. kibble size should range from 2~20mm / 0.07~0.787in in diameter.
- 2) Check whether any foreign objects are placed.
- 3) Check whether it's low battery level if power adapter not connected.

I can't disassemble the food tank

Please follow steps in Feeder Installation and Clean on page 5.

Portion size is not exact

The first few portions may vary, and it doesn't mean a faulty equipment. After about 6 feedings, it should be almost same.

FCC-Statement

This device complies with part 15 of the FCC Rules. Operation is subject to the following two conditions:

This device may not cause harmful interference.

This device must accept any interference received, including interference that may cause undesired operation.

NOTE: This equipment has been tested and found to comply with the limits for a Class B digital device, pursuant to part 15 of the FCC Rules. These limits are designed to provide reasonable protection against harmful interference in a residential installation. This equipment generates, uses and can radiate radio frequency energy and, if not installed and used in accordance with the instructions, may cause harmful interference to radio communications. However; there is no guarantee that interference will not occur in a particular installation. If this equipment does cause harmful interference to radio or television reception, which can be determined by turning the equipment off and on, the user is encouraged to try to correct the interference by one or more of the following measures:

- Reorient or relocate the receiving antenna.
- Increase the separation between the equipment and receiver.
- Connect the equipment into an outlet on a circuit different from that to which the receiver is connected.
- Consult the dealer or an experienced radio/TV technician for help.

CAUTION: To comply with the limits of the Class B digital device, pursuant to Part 15 of the FCC Rules, this device is to comply with Class B limits.

Changes or modifications not expressly approved by the party responsible for compliance could void the user's authority to operate the equipment.

RF Exposure Statement

To maintain compliance with FCC's RF Exposure guidelines, This equipment should be installed and operated with minimum distance of 20cm the radiator your body. This device and its antenna(s) must not be co-located or operation in conjunction with any other antenna or transmitter.



Made in China
Version 1.0