

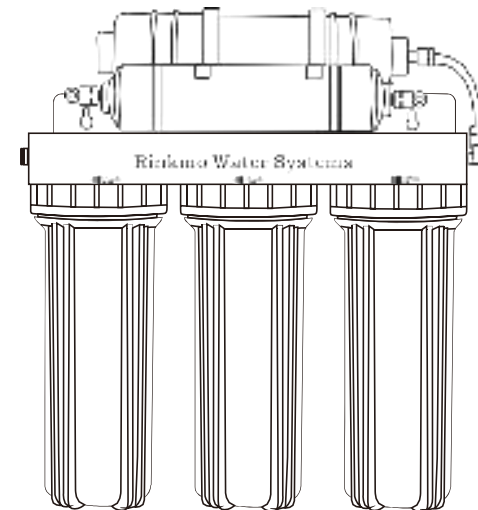
RinKmo

RinKmo

PRODUCT MANUAL



Powerful DoubleFaucets Water Purifier
Double Faucets Drinking Water Filter System



InstructionModel:RinKmo-RO-001



The PH value of each place is different and the TDS detected is different, there will be a slight deviation, please follow the local standard.

Rinkmo WATER

ULTIMATE REVERSE OSMOSIS SYSTEM COMPLETE PARTS LIST



In the above product accessories diagram, our product does not need a drain saddle at the connection to the wastewater outlet. Connect the wastewater outlet of the water purifier directly to the PE pipe to the sewer outlet.

If you find that the accessories are damaged or missing during use, please contact us in time, we will immediately reissue the accessories you need, and all accessories will be quickly received by you.

SAFETY CAUTION

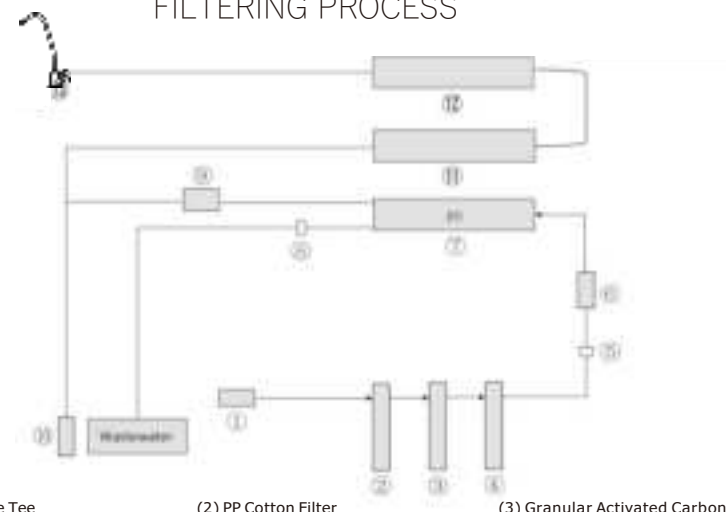


if you ignore the following, it may cause permanent damage to the pure water turbine or cause serious property damage

Warning

1. Do not open or modify this pure water machine without authorization.
2. Do not use this pure water machine under the condition of high water pressure! Install pressure reducing valve if necessary to control water pressure ($\leq 0.4\text{MPa}$)
3. Do not put the pure water machine near the fire source.
4. Do not block the waste water outlet of pure water machine.
5. The influent temperature shall not be greater than $45\text{ }^{\circ}\text{C}$ and not less than $4\text{ }^{\circ}\text{C}$.
6. Do not install the pure water machine outdoors and be exposed to the sun and rain.

FILTERING PROCESS

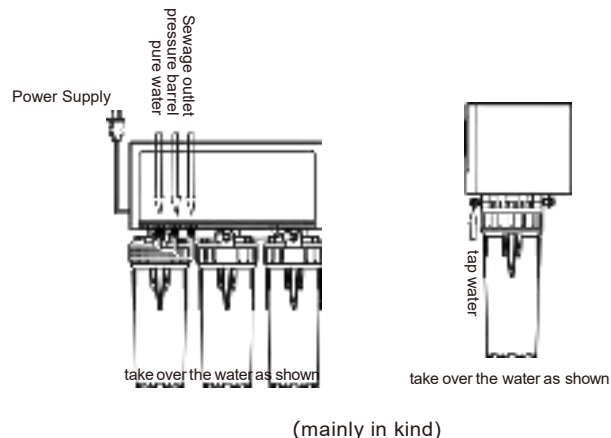


- | | | |
|-------------------------------|--------------------------------|------------------------------------|
| (1) Water inlet Pipe Tee | (2) PP Cotton Filter | (3) Granular Activated Carbon |
| (4) Sintered activated carbon | (5) Water inlet Solenoid Valve | (6) Water Pump |
| (7) RO Reverse Osmosis | (8) Wastewater Solenoid Valve | (9) High Voltage Switch |
| (10) Pressure Bucket | (11) Mineralized filter | (12) Postposition Activated Carbon |
| (13) Water Tap | | |

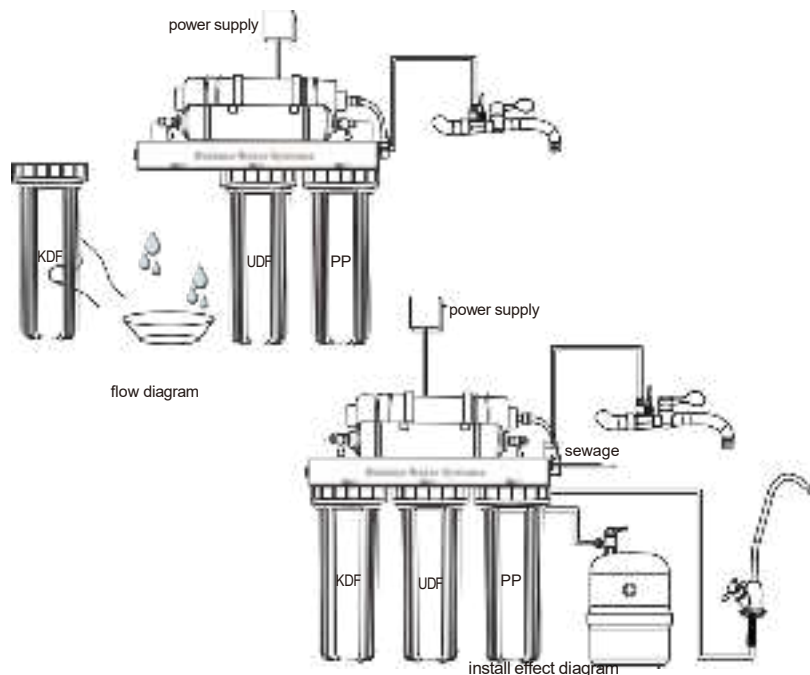
The Introduction of Brand "Powerful chip" function

1. High precision PP cotton filter
Deep purified of residual macromolecular impurities, which can protect the core reverse osmosis membrane element effectively, and extend the service life of the membrane, effective, safe and reliable.
2. Granular activated carbon
Designed with coconut shell activated carbon raw material, and the function of deep adsorption of residual chlorine and heavy metal ions in water.
3. Sintered activated carbon
Adopting Coconut husk activated carbon raw materials and mixed sintering technology, It's used to concentrate and separate macromolecular and colloidal substances in tap water, which can efficiently remove macromolecular ultrafine particles and heat sources in water, making purified water more sanitary and safer.
4. Core technology RO reverse osmosis
Effectively filter out bacteria, viruses, organics, inorganics, residual pesticides, industrial chemical pollution, and mercury, arsenic, lead, and other heavy metal ions and radioactive substances in water.
5. Mineralized weak alkaline filter
Adopting mineralized calcium and mineral fossil raw materials, so that the formed internal structure is developed, and there is enough time to contact water to effectively change the PH value of water and activate the water quality.
6. Postposition Activated Carbon
With activated carbon raw materials from coconut and well-developed internal, there is enough time exposed to water. Give you the highest water quality and good tasted of direct drinking.

INSTALLATION INDICATION



After all the pipes are connected, please do not install the third (KDF) filter elements first. At this time, water and electricity should be connected to allow the product to work. The purpose is to flush the front filter elements for five minutes. It is recommended to use a container to catch the water during working. After rinsing, twist the filter element clockwise (as shown in the figure)



Installation Instructions

Preparation tools

Monkey wrench, Dual function percussion drill, Percussion Drill Hammer of $\Phi 6$, Wall drill of $\Phi 12$, Drill cross of $\Phi 8$ /Slotted screwdriver, scissor, Pipe pliers, teflin tape

Instructions for filter replacement

Open the packaging box and take out the mainframe, pressure tank, Accessories box one by one, then open their packaging.

Schematic diagram of conventional Filter element

Schematic diagram of assembled Filter element

Disassembly

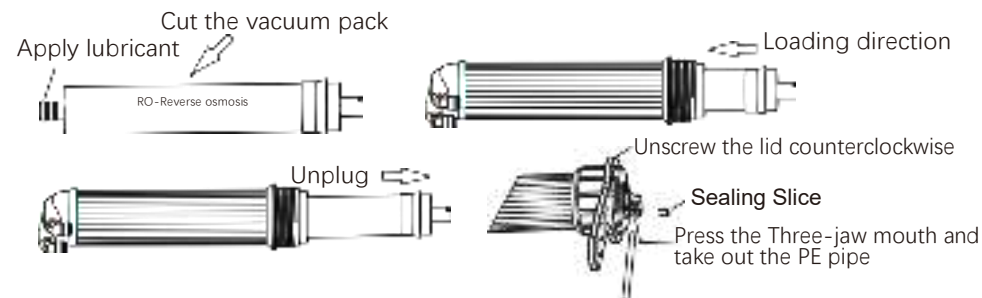
Screwing

Disassembly

Screwing



Schematic diagram of RO membrane



Remark: Schematic diagram of replacing RO

INSTALLATION NOTES

1. The product adopts fast buckle type or conventional filter element, pay attention to the density on the interface of the new filter element when replacing it. Seal the ring in good condition, and then change the number.
2. Connect the intake three links of tap water, the 2point ball valve and the tap faucet removed from the original tap water, etc. All of them need to wrap the raw material belt before they can be connected (refer to the connection diagram of accessories).
3. Each PE tube cannot be folded or scraped.
4. The power adapter cannot be plugged into a gas stove near the fire.
5. The product needs to be strictly debugged before it can be covered with the front cover, and the power can be used normally.

DEBUGGING METHOD AND CLEANING

1. First close the tap ball valve, do not turn on electricity, and then open the tap water ball valve water 5 to 8 minutes, check the first two levels of filter core and joint for leakage.
2. After testing that there is no leakage, plug in the power adapter to power on, the system will start work, at this time. The display screen shows the washing state, and the sewage outlet is discharged with water. (note: if there is no display screen, it works the same way.
3. After sewage discharge, return to the state of water production, then open the ball valve of the pressure tank, so that the equipment can be made continuously. After 20 minutes of water operation, check for leakage at all pipe fittings connections and at all levels of the filter. Water, if there is a leak, reconnect the pipe fittings.
4. After the previous step, check the OK, to turn on the clean faucet, at first with black water flowout, belong to the rear taste factor normal washing state, 30 seconds later become clear.
6. Try to turn off the pressure tank and the pure faucet for 10 to 20 seconds when the system automatically stops working. (note: it is normal for the sewage outlet to flow out of the sewage outlet for about 10 seconds); then it is normal for the sewage outlet to flow out of the sewage outlet for about 10 seconds. When the pure faucet is turned on alone, the system starts immediately, and the pure faucet has water flow. Out. According to this method, there can be no exception after debugging for 5 times in a row.
7. Wipe the water droplets in the machine with a clean rag, cover the front shell, and open the pressure bucket ball valve and complete the whole debugging process.
7. It is recommended that all the full water in the pressure tank be discharged at the first time;

FILTER ELEMENT LEVEL REPLACEMENT BASIS

1. In order for your drinking water to be healthier, the filter element must be replaced periodically according to the actual situation

Filter Name	Filter Specifications	Filter Level	Suggested Replacement Time
High Precision PP	10"	First level	Maximum 6 month
Granular Activated Carbon	10"	Second Level	Maximum 12 month
Sintered Activated Carbon	10"	Third Level	Maximum 12 month
RO Reverse Osmosis	10"	Fourth level	Maximum 24 month
Mineralized weak alkali Filter	Non-removable	Fifth level	Maximum 12 month
Postposition Activated Carbon	Non-removable	Sixth level	Maximum 12 month

The common faults and troubleshooting

fault phenomenon	The cause of faults	The method of troubleshooting
The machine does not start	The power is not connected	Check the power supply or power plug
	The power is not connected	Fine-tune the high voltage switch or replace it
	Adapter burn out	Change it
	The computer box has no output current	Check power cord connection or replace
The regulator pump works normally, but cannot produce water	High pressure pump pressure loss	Measure the outlet pressure of the pump, replace it
	Water solenoid valve damaged	Replace the inlet solenoid valve
	The front filter element is blocked	Replace the front filter element
	Blockage of reverse valve (with waste water and no pure water)	Replace the check valve
	Reverse osmosis membrane blockage	Clean or replace the reverse osmosis membrane
	The computer box is out of order and cannot close the waste water solenoid valve	Measure whether the waste water solenoid valve has current input
The machine stopped but the waste water didn't stop	The inlet solenoid valve is out of order and cannot effectively cut off water	Replace the inlet solenoid valve
	Check valve damaged	Replace the check valve
The machine takes off again and again when the water is full	Check valve damaged	Replace the check valve
	High voltage switch out of order	Replace high voltage switch
	There is leakage at the pure water end of the system	Check whether there is water seepage in the pure water pipeline after the reverse valve

The machine's purified water flow is small or without water	The front filter element is blocked	Replace the front filter element
	Reverse osmosis membrane blockage	Clean or replace the reverse osmosis membrane
	Inlet solenoid valve malfunction	Replace the inlet solenoid valve
	Check valve blocked	Replace the check valve
The pressure bucket is full of water, pure water cannot flow out	Low pressure of high pressure pump	Measure the pressure of high pressure pump, replace it
	Internal damage of pressure drum	Replace it
	The pressure tank is leaking air	Air inflation (0.5-0.7kg)
The pressure bucket is full of water, the machine cannot stop	Post activated carbon plug	Replace the activated carbon
	There is leakage at the pure water end	For maintenance
	High voltage switch damage	Replace high voltage switch