



FITMENT INSTRUCTIONS



PRODUCT: 80 Series Centre Console Cup Holder –
Factory Replacement Double Cupholder

PRODUCT NUMBER: TOY80-0011

VEHICLE: Toyota Landcruiser 80 Series 1989-1998

CONTENTS

- 1 x 80 series Factory Replacement Double Cupholder

TOOLS REQUIRED

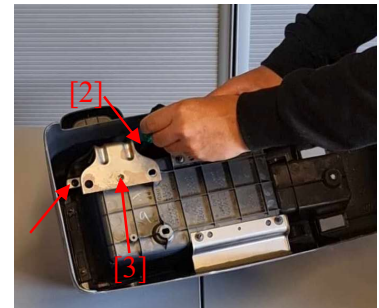
- Socket Set
- Phillips Head Screwdriver (Preferably longer than 230mm)
- A Cold beer (Not necessary, but highly Recommended for after installation)

INSTALLATION

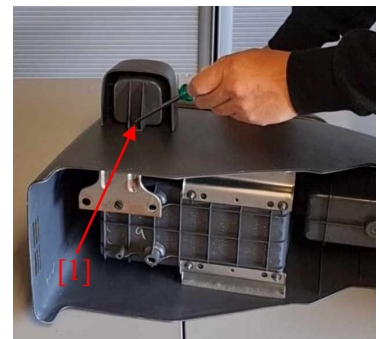
1. Remove the centre console from the vehicle using a socket set.



2. Remove the 3 Phillips head screws holding the factory cupholder and steel bracket in place from the underside of the console.



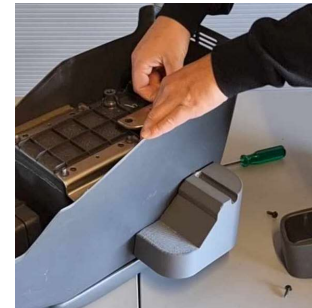
3. Remove the Phillips head screw on the outside of the console and remove the metal support bracket and factory cupholder.



4. Insert the new Double Cupholder into the console.



5. Insert the metal support bracket, line up and start threading the 2 x Phillips head screws through the metal support bracket and into the new cupholder.

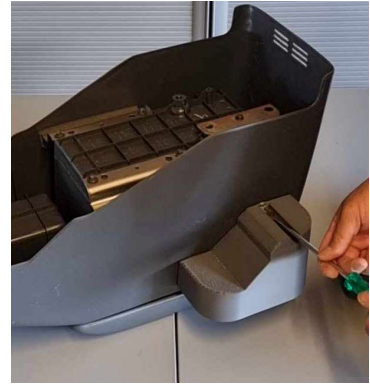


6. Position the metal support bracket into place and insert and tighten the 1x Phillips head screw to attach the metal bracket to the console.

7. With the console on its side and the cupholder on top, apply pressure to the cupholder whilst tightening the 2 x Phillips head screws into the cupholder. This brings the cupholder as close to the console as possible so there isn't a gap.



8. Insert and tighten the exterior Phillips head screw under the cupholder, through the console and onto the metal support bracket through the factory hole. Be careful not to over tighten this screw as it will tighten the bottom to the console but create a gap at the top of the console.



9. Re insert the console into the vehicle



10. Crack open a cold beer and enjoy being able to hold more than 1 cup!

