

# 10" WiFi Digital Photo Frame with Touchscreen LCD Display

Instructional Manual

---



model AWDMPF110F

## Table of Contents

---

Frame Features .....	04
Frame Control Close-up .....	06
Package Contents .....	07
Getting Started .....	07
<b>Operating Instructions</b>	
Connecting to a Wireless Network.....	08
Link your frame to your Facebook, Twitter, Aluratek WiFi Frame app or Computer.....	09
<i>Facebook</i> .....	09
<i>Twitter</i> .....	13
<i>Aluratek WiFi Frame app</i> .....	16
<i>Transfer Pictures Directly From Your Computer To The Frame</i> .....	21
<b>Main Menu Function</b>	
Main Menu .....	23
<b>Album Function</b>	
Album Settings .....	24
<b>System Function</b>	
System Settings .....	26
<b>Alarm Function</b>	
How To Set Alarm .....	28

## Table of Contents

---

Technical Support .....	29
Radio and TV Interference Statement .....	30
Warranty .....	31

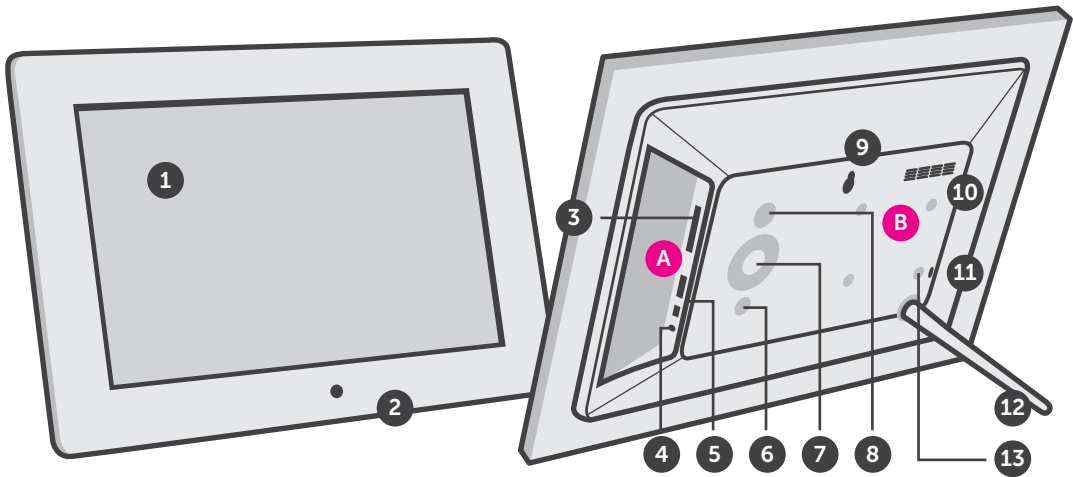
## Frame Features

---

- |   |                     |    |                    |    |                   |
|---|---------------------|----|--------------------|----|-------------------|
| 1 | 10" LCD Touchscreen | 6  | Menu Button        | 11 | Security Lock     |
| 2 | Black Frame         | 7  | Directional Keypad | 12 | Frame Stand       |
| 3 | SD/SDHC Card Slot   | 8  | Power Button       | 13 | Wall / VESA Mount |
| 4 | Power Adapter Port  | 9  | Wall Mount Hole    |    |                   |
| 5 | USB 2.0 Ports       | 10 | Speakers           |    |                   |

**A** Connect a USB hard drive, USB flash drive or SD/SDHC card to easily access and share your favorite pictures, music, or videos.

**B** Transfer and store files quickly and easily from your personal computer to the frame's 8GB built-in memory with hi-speed USB 2.0.



## Frame Control Close-Up

1 - ⏻ Power On / Off

2 - MENU

(a) Press to return to previous screen

(b) Press & hold to return to Main Menu

3 - ▶ || Play / Pause

(a) Press to select option on Main Menu

(b) Press to pause slideshow, music or video

4 - | ◀◀ Up Arrow

(a) Press to navigate UP when selecting options

(b) Press to select Previous file (Photo & Music mode)

(c) Press & hold to Fast Forward

5 - ▶▶ | Down Arrow

(a) Press to navigate DOWN when selecting options

(b) Press to select Next file (Photo & Music mode)

(c) Press & hold to Scan Backward

6 - ((◀) Left Arrow

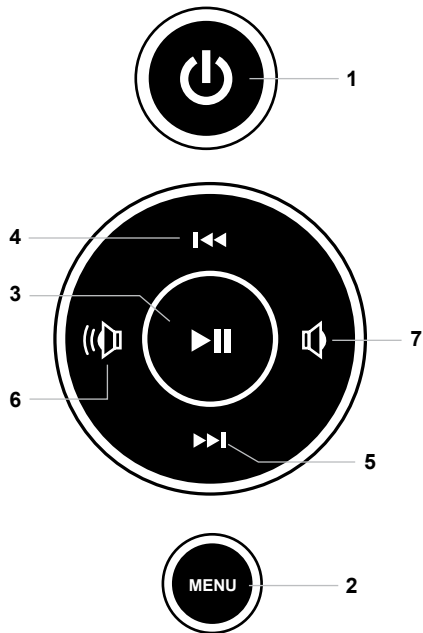
(a) Press to navigate LEFT when selecting options

(b) Press & hold to lower volume

7 - (▶) Right Arrow

(a) Press to navigate RIGHT when selection options

(b) Press & hold to increase volume



## Package Contents

---

Your order has been carefully packaged and inspected. The following accessories should be included in your package. Please inspect the contents of the package to ensure that you have received all items and that nothing has been damaged. If you discover a problem, please contact us immediately for assistance.

- USB 2.0 Cable
- Power Adapter
- Frame Stand
- Registration Card
- Quick Start Guide

## Getting Started

---

- Screw in the frame stand
- Plug in the power adapter

## Operating Instructions

---

### Step 1: Connecting to a wireless network

AWDMPF110F scans for available Wi-Fi networks and displays the names of those it finds when it is powered on when it is powered on. Secured networks are indicated with a Lock icon. If AWDMPF110F finds a network that you connected to previously, it connects to it automatically. If not:

1. Touch the Network you want to connect to
2. Use the keyboard to enter the Password
3. Touch Connect
4. Touch > to continue to next step



## Operating Instructions

---

### Step 2: Link your frame to your Facebook, Twitter or Photo Partner App

#### Facebook

How to link the frame to you Facebook account so that pictures from your Facebook page will show automatically on the frame after you post it.

1. You can either scan the QR Code on the frame using your smart phone or type <https://m.facebook.com/AWcloudalbum/> on a browser or mobile device using any device.
2. Click on "USE APP".



## Operating Instructions

---

3. Click on “Authorization and logging”.



4. Please login to your Facebook account. If you are already logged in on this computer, you will not need to login again and you will be directed to the next step directly.



## Operating Instructions

**5.** Go to Settings > Device Info from the frame's main menu.

For RM Name, create a nickname for your frame to easily identify which frame is which in case you have more than one wifi frame. After you have filled out both fields, please click "TO Bind".

**6.** You will see below message after the request is sent.



## Operating Instructions

---

7. You will then see the below confirmation message. You will also receive a message on the frame showing that your facebook account is linked to the frame.

8. Congratulations! Your Facebook account is now linked to the frame. From now on, every picture that you post to your Facebook will be pushed to the WiFi Frame directly without any extra steps.



## Operating Instructions

---

### Twitter

How to link the frame to your Twitter account so that you can post picture directly from your Twitter account to the frame.

1. You can either scan the QR Code on the frame or type:

<https://twitter.com/CloudAlbum/>  
in your browser

2. Click on "Follow".



## Operating Instructions

---

**3.** Please login to your Twitter account. If you are already logged in on this computer, you will not need to login again and you will be directed to the next step directly.



**4.** Click "Message" to send a private message to link the frame.



## Operating Instructions

---

**5.** Type 'bd+device serial no' to bind. For example, if the device serial number is 1234567890, please type bd1234567890 in the message. Once the binding is successful, you will see a reply from the Cloud Frame for the confirmation.



**6.** Congratulations! Your Twitter account is now linked to the frame. To post a picture to your frame, you can just send a private message to the frame like below.



## Operating Instructions

### Aluratek WiFi Frame app



How to link the frame to “Cloud Photo” app so that you can send picture/video directly from your tablet or smartphone.

1. You can either scan the QR Code on the frame by going to Settings > Device Info or search for “Cloud Photo” in either Google Play or iTunes store.





## Operating Instructions

---

**2.** Please enter the the smart device ID number. You can find the Frame ID No. under Settings > Device Info from the main menu of the frame.

**3.** Tap on Bind. Once the process is complete, you can verify it under when you tap on “Device Manager” A popup message will also be shown on the frame.

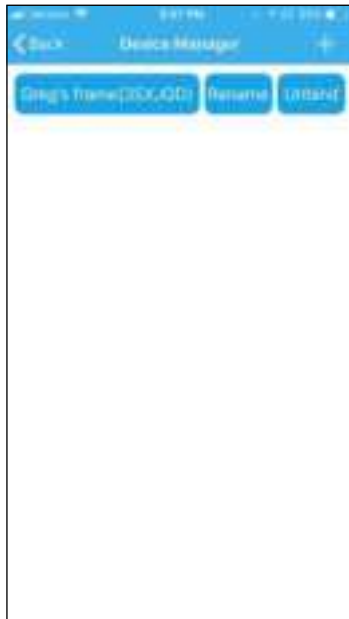


## Operating Instructions

---

### 4. Congratulations!

Aluratek WiFi Frame app is now linked to the frame.



## Operating Instructions

---

To post picture from the Aluratek WiFi Frame app to the frame, please follow below steps.

- A.** Tap on “Local Photo and Video” and choose either photo or video.
- B.** Select the pictures or videos that you want to send to the frame.
- C.** Tap on “Done” on the bottom of the screen to confirm the selection.



## Operating Instructions

**D.** You can also add text to the picture by tapping on the photo and type in the text.

**E.** Tap on “Send Photo” or “Send Video” to send the picture / pictures or video / videos to the frame. You will see a status bar on the main menu to see the progress. You may also check by tapping “Message”.



## Operating Instructions

---

### Transfer Pictures Directly From Your Computer To The Frame

To transfer pictures from your computer to AWDMPF110F directly, the frame and the computer will need to be in the same network. Follow the steps below to transfer the pictures.

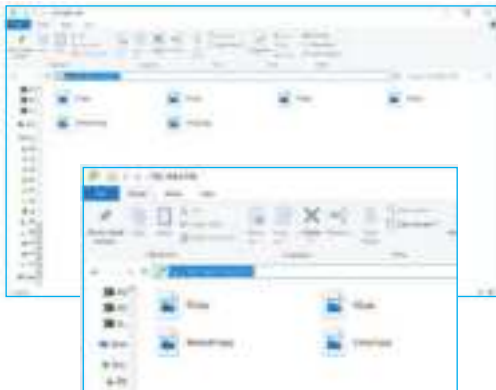
1. Go to Settings > PC Control on the frame. Click "Start" to see the ftp address of the frame on the screen.



## Operating Instructions

---

2. Go to your computer and open “File Explorer”. In the File Explorer, type in the exact address in the address bar. In this example, it is **ftp://192.168.0.100:2121**
3. The internal memory of the frame will show up like a folder on your computer. Please just drag and drop pictures that you like to transfer to this folder.
4. Once transferred, please go to Album > Internal memory of the frame to see the pictures.



Note: If the computer and the frame is not on the same network, you can send / transfer the pictures to the frame via Facebook / Twitter or Aluratek WiFi Frame app.

## Main Menu Function

---

### Main Menu



## Album Function

### Album Settings

1. From the main menu, tap on “Settings”.
2. Tap on “Album Settings”.





## Album Function

---

**Photo Optimization:** Set photo play in original size or to full screen.

**Slideshow:** If enabled, the slideshow will start automatically. The slideshow will display pictures from the cloud media folder unless you are in the thumbnail page of the Internal memory or USB/SD Card folder then the slideshow will show pictures in those folders only.

**Set music path:** Set to play music files from the internal memory or USB/SD card slot.

**Background Music Mode:** Set background music playlist.

**Photo / Video random display:** Enable random pictures / videos in slideshow mode.

**Autoplay video:** Video in cloud media will autoplay during slideshow.

**Slideshow mode:** Slideshow transition effect

**Slideshow interval:** Slideshow time interval.

**Slideshow photo limit:** Set the number of pictures in the slideshow.

**Auto sleep and wakeup:** Enable the auto on/off feature.

**Set sleep time:** Set the time for the frame to auto power off.

**Set wakeup time:** Set the time for the frame to auto power on.

**Remove all photos:** Delete all photos from the cloud media and internal memory folders

**Reset all setting:** Reset all settings and disconnect all linked accounts without removing pictures in the cloud media and internal memory folders.

## System Function

### System Settings

1. From the main menu, tap on “Settings”.
2. Tap on “System Settings”.



## System Function

---

**Sound:** To adjust the media volume and notification volume, enable the touch sounds.

**Display:** To adjust the brightness of the display.

**Date and time:** To set the date and time for the frame.

**Language:** To select the display language.

**Factory data reset:** Rest all data from the device's internal memory and the inserted SD card.

## Alarm Function

---

### How To Set Alarm

1. From the main menu, tap on “Alarm”.
2. To edit an existing alarm, tap on “Edit alarm” or tap “Add alarm” to create a new alarm.
3. Once you have set the days, time and ringtone of the alarm, tap OK to set the alarm.



## Technical Support

---

We are committed to providing the best customer service support. If you need assistance with your Aluratek product, please contact the Aluratek Technical Support department prior to returning this device. Reach out to us in any of the following ways:

E-mail: **support@aluratek.com**

Web: **aluratek.com/helpdesk**

Local (Irvine, CA): **714-586-8730**

Toll free: **1-866-580-1978**

## Radio and TV Interference Statement

---

**WARNING!!!** This equipment has been tested and found to comply with the limits of a Class B digital device, pursuant to part 15 of the FCC rules. These limits are designed to provide reasonable protection against harmful interference in a residential installation

This equipment generates, uses and can radiate radio frequency energy and, if not installed and used in accordance with the instruction, may cause harmful interference to radio communications. However, there is no guarantee that interference will not occur in a particular installation. If this equipment does cause harmful interference to radio or television reception, which can be determined by turning the equipment off and on, the user is encouraged to try to correct the interference by whatever measures may be required to correct the interference.

## Warranty

---

Aluratek warrants this product against defect in material or workmanship for **1 Year** from the date of purchase.

This warranty becomes invalid if the factory-supplied serial number or “warranty void” sticker has been removed or altered on the product.

This warranty does not cover:

- A) Cosmetic damage or damage due to acts of God
- B) Accident, misuse, abuse, negligence or modification of any part of the product.
- C) Damage due to improper operation or maintenance, connection to improper equipment, or attempted repair by anyone other than Aluratek.
- D) Products sold AS IS or WITH FAULTS.

IN NO EVENT SHALL ALURATEK'S LIABILITY EXCEED THE PRICE PAID FOR THE PRODUCT FROM DIRECT, INDIRECT, SPECIAL, INCIDENTAL, OR CONSEQUENTIAL DAMAGES RESULTING FROM THE USE OF THE PRODUCT, IT'S ACCOMPANYING SOFTWARE, OR IT'S DOCUMENTATION.

Aluratek makes no warranty or representation, expressed, implied, or statutory, with respect to it's products, contents or use of this documentation and all accompanying software, and specifically disclaims it's quality, performance, merchantability, or fitness for any particular purpose. Aluratek reserves the right to revise or update it's product, software or documentation without obligation to notify any individual or entity.

