



BOSCH

Register your
new device on
MyBosch now and
get free benefits:
**[bosch-home.com/
welcome](https://bosch-home.com/welcome)**



DesignLine

TAT5P42...CN

[zh]

使用说明书

多士炉

6

[en]

Information for Use

Compact toaster

9

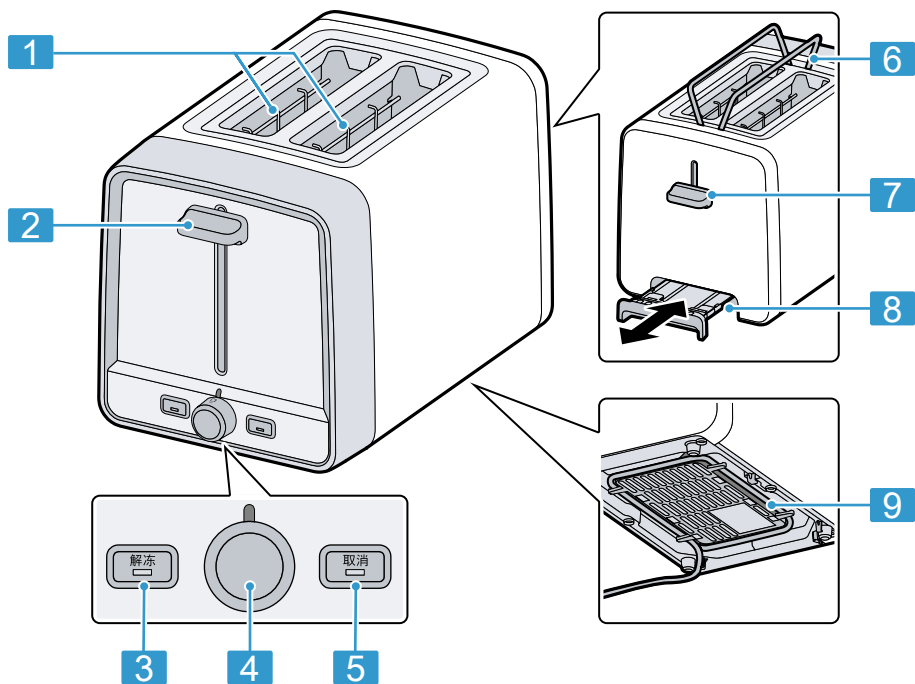


<https://digitalguide.bsh-group.com?mat-no=8001273211>

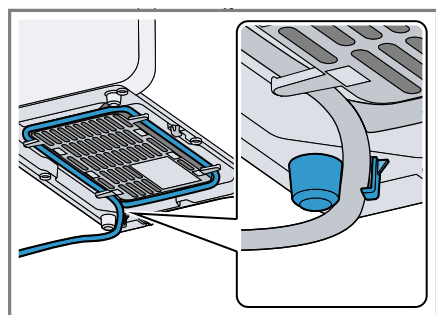


[zh] 要打开更多与使用相关的提示，请扫描二维码或访问网站。您可以在那里查阅关于机器或附件的更多详细信息。

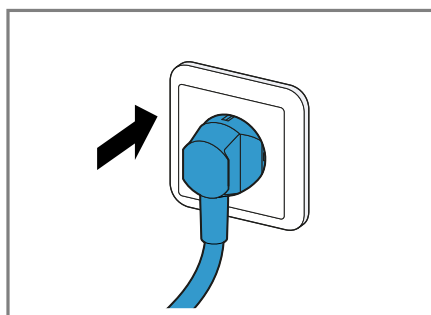
[en] Scan the QR code or visit the website to open the Further Notices for Use. You can find additional information about your appliance or accessory here.



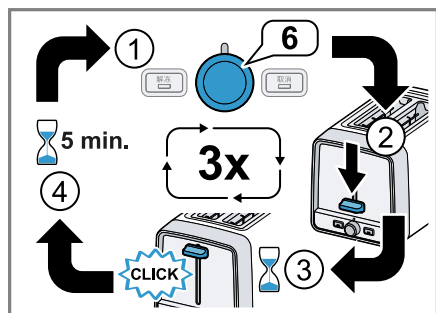
1



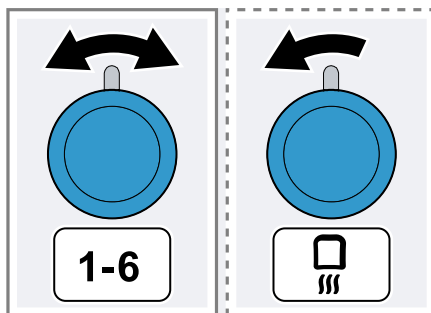
2



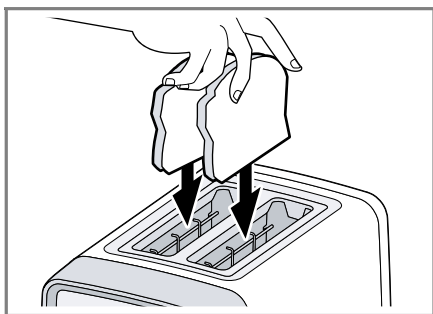
3



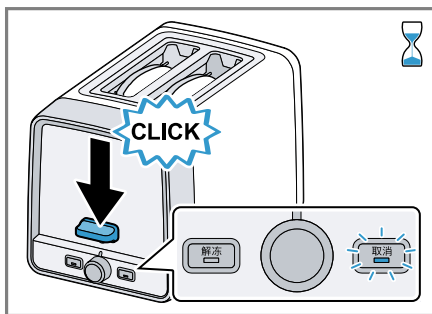
4



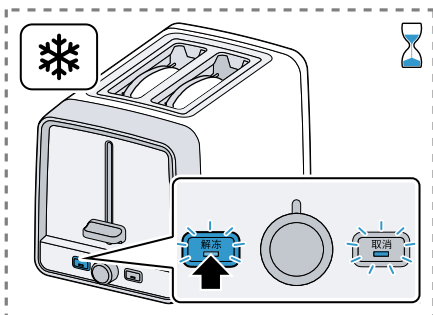
5



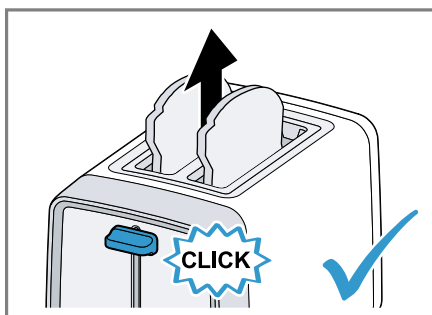
6



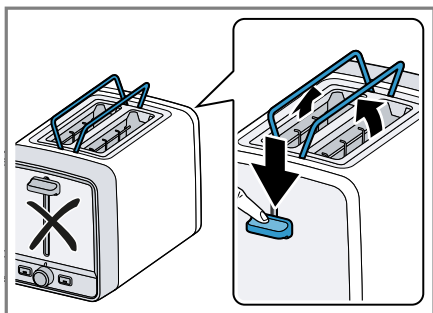
7



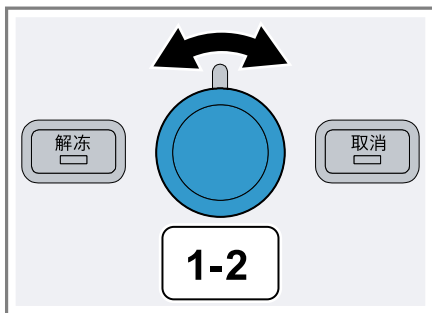
8



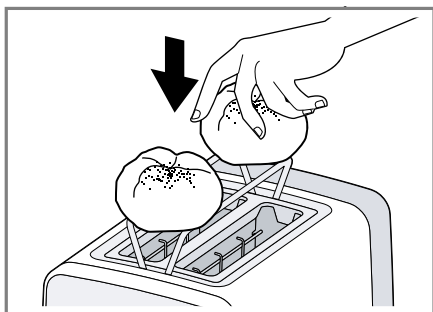
9



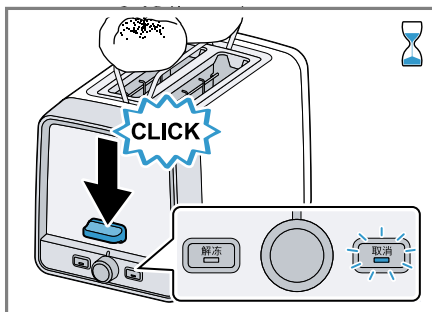
10



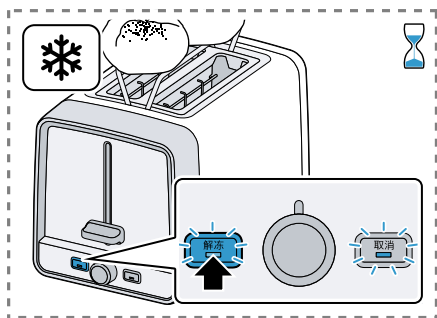
11



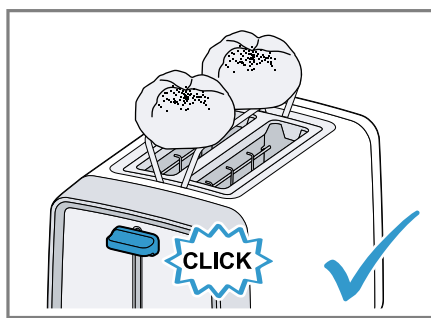
12



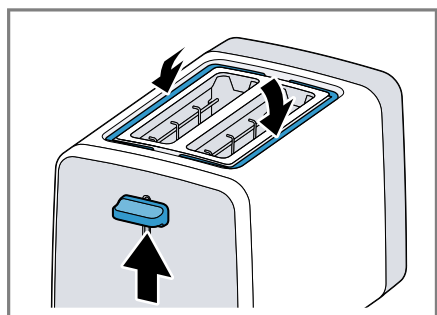
13



14



15



16

| | ✓ | ✗ | ✗ | ✗ | ✗ |
|--|---|---|---|---|---|
| | ✓ | ✓ | ✗ | ✗ | ✗ |

17



安全性

- 请仔细阅读本说明书。
- 请妥善保管说明书及产品资料以备日后查阅或提供给下一位使用者。

本电器仅限用于：

- 在监视下。
- 仅限私人家庭和室温下的居家环境室内区域。
- 最高在海拔 2000 m 使用。
- 烤面包，加热或解冻切片面包、面包、小面包和其他适合用烤面包机烹饪的食物。

必须在每次使用后、电器离开视线范围时、清洁前和在发生故障时将本电器的电源断开。

凡年满 8 岁的孩童，身体、感官或智力有缺陷的人士以及缺乏相关经验和知识的人士，应在负责安全使用机器人员的监督或指导下，了解使用机器可能带来的危险后，方能使用本机器。

严禁孩童将本机器当成玩具玩耍。

八岁以上的孩童除非在监督下，否则不得进行清洁及用户维护的工作。

请确保 8 岁以下的孩童远离本机器及其电源线。

- ▶ 仅限按规格铭牌所提供之信息连接并运行本机器。
- ▶ 仅限通过按规定安装接地保护的插座将本机器连接到带有交流电的电源。
- ▶ 楼房电路安装的接地系统必须按规定进行安装。
- ▶ 切勿通过定时器或遥控器等外部开关装置为本机器供电。
- ▶ 唯有合格的专业人员方可维修机器。
- ▶ 如果电源软线损坏，为了避免危险，必须由制造商、其维修部或类似部门的专业人员更换。
- ▶ 请勿将本机器或电源线浸泡在水中，或放入洗碗机洗涤。



- ▶ 切勿在有水的浴缸、水槽或其他容器附近使用本机器。
- ▶ 请勿使用蒸汽清洁器或高压清洁器清洁本机器。
- ▶ 切勿使用烤箱清洁喷雾或烤架清洁喷雾来清洁电器。
- ▶ 切勿将手伸进吐司槽或插入餐具等物体。
- ▶ 请勿运行已损坏的机器。
- ▶ 切勿将电器放在高温表面或热源附近。
- ▶ 切勿在易燃材料 (例如窗帘) 附近或下方使用电器。

- ▶ 切勿盖住吐司槽或直接在吐司槽上加热食物。
- ▶ 必须在装有集屑盘的情况下直立运行本电器。
- ▶ 吐司升降杆仅针对规定用途向下按下，切勿将其卡住。
- ▶ 请随时在运行过程中关注本烤面包机。
- ▶ 切勿使用会在烘烤或回烤过程中可能滴落的食物。
- ▶ 切勿使用含有油脂、脂肪或糖的食物，如华夫饼或涂抹过的面包。
- ▶ 切勿触摸高温表面，仅可触摸控制元件。
- ▶ 请等电器冷却后再进行清洁或移动。
- ▶ 只允许合规使用本电器，以免造成伤害。
- ▶ 请让孩童远离包装材料。
- ▶ 切勿让孩童用包装材料玩耍。
- ▶ 请让孩童远离小型部件。
- ▶ 切勿让孩童玩耍小型部件。

概览

→ 图 1

| | |
|---|--------------------|
| 1 | 吐司槽 |
| 2 | 吐司升降推杆 |
| 3 | 带 LED 灯的按键 解冻 (解冻) |
| 4 | 烘烤程度挡位旋钮 |
| 5 | 带 LED 灯的按键 取消 (结束) |
| 6 | 内置式烘烤架 |
| 7 | 烘烤架推杆 |
| 8 | 集屑盘 |
| 9 | 电源线收纳仓 |

准备电器的初次使用

注：在没有面包的情况下，打开窗口，以最高的烘烤程度设置加热烤面包机 3 次，然后冷却。

→ 图 2 - 4

操作

一般注意事项


请遵守这些提示，以便您能够以最佳方式使用本电器。

- 可以随时通过按下按键 **取消** 停止当前的烘烤过程。

- 如果正在烘烤的食物卡住，本电器会自动关闭。拔掉烤面包机的插头，让其冷却，然后小心地取出卡住的烘烤食物。
- 第一次使用本电器时，请尝试不同的烘烤程度设置，因为结果可能会因面包的类型和水分含量而有所不同。
- 烘烤单片面包需要比 2 片面包更低的烘烤程度。
- 丙烯酰胺对健康有害，在非常高的温度下烹制谷物产品和土豆产品时会形成丙烯酰胺。请将食物烤至金黄色为宜，色泽不要太深，并去除任何烧焦残渣。

烘烤程度设置

根据食物和个人口味调整烘烤程度。

| 设置 | 用途 |
|---|--|
|  | 通过最低设置可重新加热面包或预先烤过的食物，而无需加热 |
| 1-2 | 干面包的类型需要较低的烘烤程度 |
| 3-4 | 湿面包类型需要中度的烘烤程度 |
| 5-6 | 非常湿的面包类型或厚的面包片需要较高的烘烤程度 |
| 解冻 | 启动后，额外按下按键 解冻 ，可以使冷冻的食物被烤到设置的烘烤程度 |

zh 清洁概述

烘烤、重新加热或解冻面包片

→ 图 5 - 9

回烤或解冻小面包

注：请勿在回烤小面包的同时将烘烤食物放入吐司槽。

→ 图 10 - 16

清洁概述

注：为防止本电器出现故障，请定期清洁集屑盘。

→ 图 17

执行标准

| | |
|-----------|------------------------|
| GB 4706.1 | 家用和类似用途电器的安全 第1部分：通用要求 |
|-----------|------------------------|

技术数据

| | |
|---------------|------------------------|
| 电气连接 | 220-240 V~ 50/60 Hz |
| 功率 | 820-970 W |
| 尺寸（高 x 宽 x 深） | 195 x 174 x 304 mm |

客户服务

有关您所在国家／地区的保修期和保修条款的详细信息，请向本公司的客户服务、经销商或在本公司网站查询。
有关客户服务的联系信息，请查看本说明书后面的客户服务索引或本公司的网站。

保修

本电器的保修条款由电器售国出的代表处确定。有关这些条款的详细信息，请向购买电器的零售商洽询。当根据保修条款进行任何索赔时，必须出具销售凭证或收据。



Safety

- Read this instruction manual carefully.
- Keep the instruction manual and the product information safe for future reference or for the next owner.

Only use this appliance:

- under supervision.
- in private households and in enclosed spaces in a domestic environment at room temperature.
- up to an altitude of max. 2000 m above sea level.
- for toasting, warming or defrosting sliced toasting bread, bread, rolls and other food intended for heating in the toaster.

It must always be disconnected from the mains after each use, whenever the appliance is unsupervised, before cleaning and with any faults.

This appliance may be used by children aged 8 or over and by people who have reduced physical, sensory or mental abilities or inadequate experience and/or knowledge, provided that they are supervised or have been instructed on how to use the appliance safely and have understood the resulting dangers.

Do not let children play with the appliance.

Children must not perform cleaning or user maintenance unless they are at least 8 years old and are being supervised.

Keep children under the age of 8 years away from the appliance and power cable.

- ▶ Connect and operate the appliance only in accordance with the specifications on the rating plate.
- ▶ Connect the appliance to a power supply with alternating current only via a properly installed socket with earthing.
- ▶ The protective conductor system of the domestic electrical installation must be properly installed.
- ▶ Never equip the appliance with an external switching device, e.g. a timer or remote control.
- ▶ Repairs to the appliance should only be carried out by trained specialist staff.
- ▶ If the power cord of this appliance is damaged, it must be replaced by the manufacturer, the manufacturer's Customer Service or a similarly qualified person in order to prevent any risk.

- ▶ Never immerse the appliance or the power cord in water or clean in the dishwasher.



- ▶ Never use the appliance near water contained in a bath, sink or other vessels.
- ▶ Do not use steam- or high-pressure cleaners to clean the appliance.
- ▶ Do not use oven or grill sprays to clean the appliance.
- ▶ Never reach into the toast slots or insert objects into them, e.g. cutlery.
- ▶ Never operate a damaged appliance.
- ▶ Never place the appliance on or near hot surfaces.
- ▶ Never operate the appliance near or underneath inflammable materials such as curtains.
- ▶ Never cover the toast slots or heat food directly over them.
- ▶ Only operate the appliance in an upright position and with the crumb tray inserted.
- ▶ Always ensure proper use by pressing down the lever for the toast lift and never block it.
- ▶ Never leave the toaster unattended while in use!
- ▶ Never use foods that could drip during toasting or crisping-up.
- ▶ Never use greasy or fatty foods or foods containing a lot of sugar, e.g. waffles or bread with spread on.
- ▶ Never touch the hot surfaces, only the controls.
- ▶ Allow the appliance to cool down before cleaning or transporting.
- ▶ To avoid injuries, only use the appliance for its intended purpose.
- ▶ Keep packaging material away from children.
- ▶ Do not let children play with packaging material.
- ▶ Keep small parts away from children.
- ▶ Do not let children play with small parts.

Overview

→ Fig. 1

| | |
|---|----------------------|
| 1 | Toast slots |
| 2 | Lever for toast lift |

| | |
|---|-------------------------------------|
| 3 | 解冻 button with LED (defrost) |
| 4 | Rotary selector for toasting degree |
| 5 | 取消 button with LED (stop) |
| 6 | Integrated warming rack |
| 7 | Lever for warming rack |

| | |
|----------|------------|
| 8 | Crumb tray |
| 9 | Cord store |

Preparing the appliance for first use

Note: Heat up the toaster 3 times without bread near an open window at the highest toasting degree setting and leave to cool down.

→ Fig. **2** - **4**

Operation


General information

Please bear this information in mind so that you can get the best out of your appliance.

- You can end the current toasting process at any time by pressing the **取消** button.
- If the toast gets jammed in the toast slots, the appliance will switch off automatically. Unplug the toaster, allow it to cool down and then carefully remove the jammed bread.
- Try different toasting degree settings when using the appliance for the first time, as results may vary depending on the type of bread and moisture level.
- When toasting a single slice of bread, use a lower toasting degree than with 2 slices.
- Acrylamide is harmful to your health and is produced when you cook cereal and potato products at very high temperatures. Do not toast food items to the point where they are too dark but until they are golden-yellow. Remove any burnt edges.

Toasting degree setting

Adjust the toasting degree according to the type of bread and personal taste.

| Setting | Use |
|--|---|
|  | Lowest setting to warm bread or pre-toasted food without toasting |
| 1-2 | Low toasting degree for dry types of bread |

| Setting | Use |
|-----------|---|
| 3-4 | Medium toasting degree for moist types of bread |
| 5-6 | High toasting degree for very moist types of bread or thick slices of bread |
| 解冻 | After starting, additionally press the 解冻 button to ensure that frozen bread is toasted to the toasting degree that has been set |

Toasting, warming or defrosting slices of bread

→ Fig. **5** - **9**

Heating up or defrosting bread rolls

Note: Do not heat up bread rolls and place toast in the toast slots at the same time.

→ Fig. **10** - **16**

Overview of cleaning

Note: In order to avoid malfunction of the appliance, clean the crumb tray regularly.

→ Fig. **17**

Applicable standard

| | |
|-----------|---|
| GB 4706.1 | Household and similar electrical appliances – Safety – Part 1: General requirements |
|-----------|---|

Technical data

| | |
|------------------------|------------------------|
| Electrical connection | 220-240 V~ 50/60 Hz |
| Power | 820-970 W |
| Dimensions (H x W x D) | 195 x 174 x 304 mm |

Customer Service

Detailed information on the warranty period and terms of warranty in your country is available from our after-sales service, your retailer or on our website.

en Customer Service

The contact details for Customer Service can be found in the Customer Service directory at the end of the manual or on our website.

Warranty conditions

The guarantee conditions for this appliance are as defined by our representative in the country in which it is sold. Details regarding these conditions can be obtained from the dealer from whom the appliance was purchased. The bill of sale or receipt must be produced when making any claim under the terms of this guarantee.

Service world-wide

Central Service Contacts

AU Australia

BSH Home Appliances Pty. Ltd.
Gate 1, 1555 Centre Road
Clayton, Victoria 3168
Tel.: +61 1300 369 744*
mailto:customersupport.au@bshg.com
www.bosch-home.com.au
*Mon-Fri 24 hours

CN China, 中国

BSH Home Appliances Service Jiangsu
Co. Ltd.
Building 3, No. 18 Qingjiang South Road,
Gulou District
Nanjing, Jiangsu Province
Service Tel.: 400 8855 888*
mailto:careline.china@bshg.com
www.bosch-home.cn
*phone rate depends on the network used

GB Great Britain

BSH Home Appliances Ltd.
Grand Union House, Old Wolverton Road,
Wolverton
Milton Keynes MK12 5PT
To arrange an engineer visit, to order
spare parts and accessories or for
product advice please visit www.bosch-
home.co.uk Or call Tel.: +44 344 892
8979*
*Calls are charged at the basic rate,
please check with your telephone service
provider for exact charges.

IE Republic of Ireland

BSH Home Appliances Ltd.
M50 Business Park, Ballymount Road Up-
per, Walkinstown
Dublin 12
To arrange an engineer visit, to order
spare parts and accessories or for
product advice please call Tel.: +353
1450 2655*
www.bosch-home.ie
*Calls are charged at the basic rate,
please check with your telephone service
provider for exact charges

MT Malta, Repubblika ta' Malta

Oxford House Ltd.
Triq L-Imdina, Zone 2
Birkirkara CBD 2010
Tel.: +356 25 464 000
mailto:info@oxfordhouse.com.mt
mailto:service@oxfordhouse.com.mt
www.oxfordhouse.com.mt

MV Raajjeyge Jumhooriyyaa, Maldives

Evo Home
H. Vaaly Villa, Majeedhee Magu
20042 Malé
Tel.: +960 334 18 19
mailto:info@evohome.mv
mailto:sales@evohome.mv
www.evo.mv

NZ New Zealand

BSH Home Appliances Ltd.
Level 3, Air NZ Building, Smales Farm
Business Park, 74 Taharoto Road, Taka-
puna
Auckland 0622
Toll free: 0800 245 700*
mailto:aftersales.nz@bshg.com
www.bosch-home.co.nz
*Mon-Fri 8.30am to 5pm (exclude public
holidays)

PK Pakistan پاکستان

GULABZAI Group
20-L, Near Emporium Mall, Johar Town
Lahore
Tel.: +92 300 0308 046 Ext: 102
mailto:customer.care@gulabzai.com.pk

SG Singapore, 新加坡

BSH Home Appliances Pte. Ltd.
38C Jalan Pemimpin, #01-01
Singapore 577180
Tel.: +65 6751 5000*
mailto:bshsgp.service@bshg.com
www.bosch-home.com.sg
*Mon-Fri 9am to 6pm, Sat: 9am to 1pm
(exclude public holidays)

ZA South Africa

BSH Home Appliances (Pty) Ltd.
96 Fifteenth Road, Randjespark
1685 Midrand - Johannesburg
Tel.: +27 86 002 6724
mailto:bsh@iopen.co.za
mailto:applianceserviceza@bshg.com
www.bosch-home.com/za



A series of horizontal lines for writing, consisting of 20 lines in total. The lines are evenly spaced and extend across the width of the page.



A series of horizontal lines for writing, consisting of 20 lines in total. The lines are evenly spaced and extend across the width of the page.



Thank you for buying a Bosch Home Appliance!

Register your new device on MyBosch now and profit directly from:

- Expert tips & tricks for your appliance
- Warranty extension options
- Discounts for accessories & spare-parts
- Digital manual and all appliance data at hand
- Easy access to Bosch Home Appliances Service

Free and easy registration – also on mobile phones:

www.bosch-home.com/welcome



Looking for help? You'll find it here.



博世家电官方微信公众号

Expert advice for your Bosch home appliances, help with problems or a repair from Bosch experts.

Find out everything about the many ways Bosch can support you:

www.bosch-home.com/service

Contact data of all countries are listed in the attached service directory.

产地: 广州

制造商: 博世家用电器(中国)有限公司

地址:

中国江苏省南京市鼓楼区清江南路18号3幢

客户服务热线: 400 885 5888

客户服务电子邮箱:

careline.china@bshg.com

www.bosch-home.cn



8001273210 (030308)

zh, en