

Fidget Steer Grip IoT sound user manual



Spread the upper part of the product slightly, and place it onto the steering wheel.



Spread the lower part of the product slightly as well, and place it onto the steering wheel.



Press the entire product firmly to secure it to the steering wheel, making sure there are no folds or raised parts.

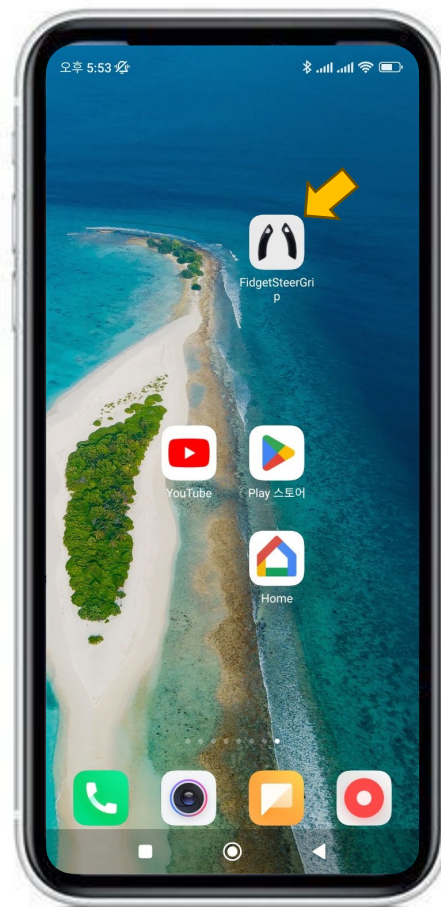
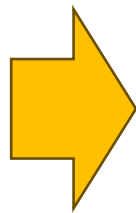
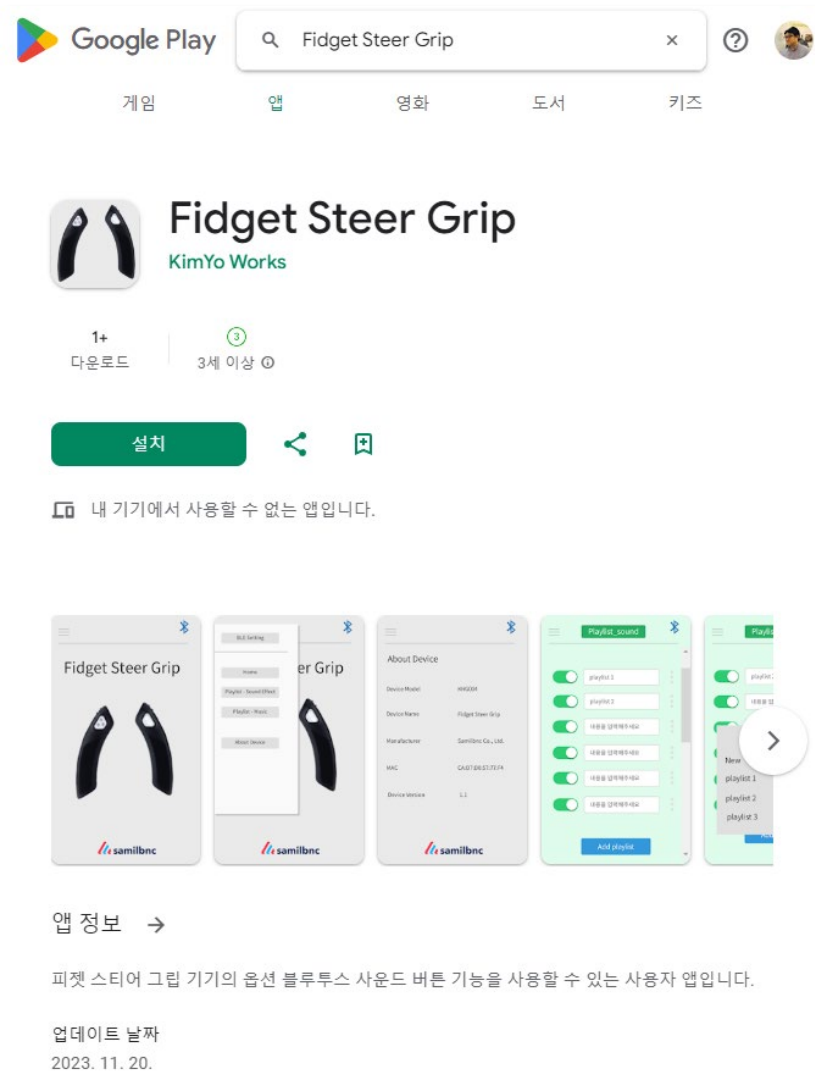


Caution

Never mount the product on the steering wheel by spreading the product using excessive force. Otherwise, the product may be damaged.

- **Unfold the folded part**, as the product was installed incorrectly with the edge's end folded.
- **Straighten the raised portion** as the product was installed incorrectly with a **part lifted**.

Google Play Store : Search ⇨ Install 'Fidget Steer Grip'



Install

Fidget Steer Grip App Install

1) This app is a dedicated app for Fidget Steer Grip IoT Sound devices,

The device is connected to the user's mobile phone through Bluetooth (BLE) communication.

When the connection is complete Try pressing the device button . the app Activates to play pre-stored sound effects (or songs) .

2) This app has 2 modes .

① Sound effect mode : Play sound effects (Sound effect sources are not provided by the developer and must be saved directly in the app by the user . Refer to manual P6)

② Music (song) mode : Song playback (Music sound source is not provided by the developer and must be saved in the app by the user . Refer to manual P8)

※ For reference, to switch modes, press the device button twice in succession

3) Description of device button operation



□ How to operate sound effect mode (driving stress relief function)

- Press and hold the button for 2 seconds : sound effect is played
- Press the button only once : stop playing the sound effect or play the next song
- Press the button twice : Switch mode (sound effect mode ⇄ music mode)

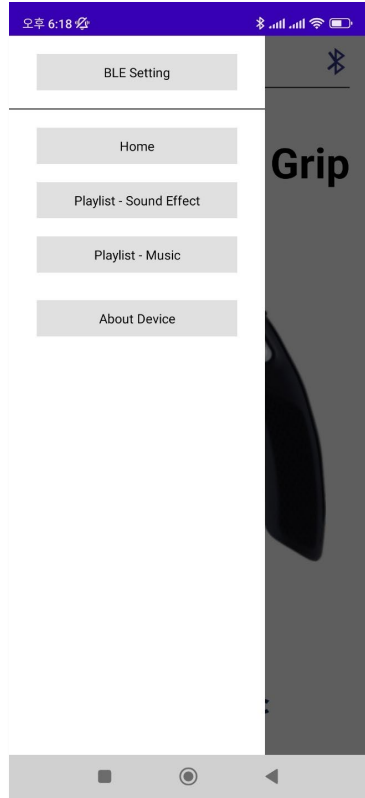
□ How to organize music mode (listen to your favorite songs while driving)

- Just press the button once : play song or play next song
- Press and hold the button for 3 seconds : stop playing the sound effect
- Press the button twice : Switch mode (sound effect mode ⇄ music mode)

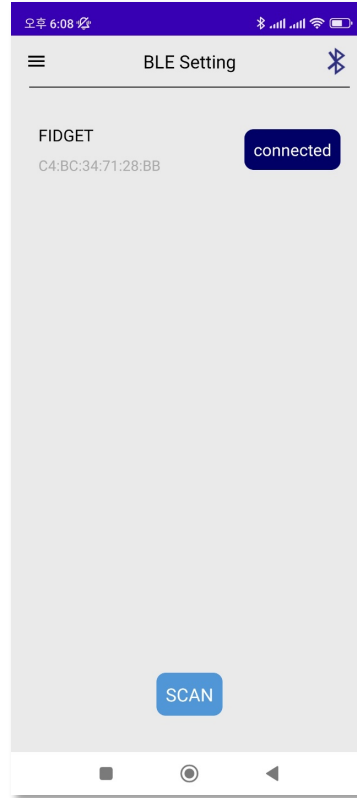
Press the device button to play sounds saved in the app



Home

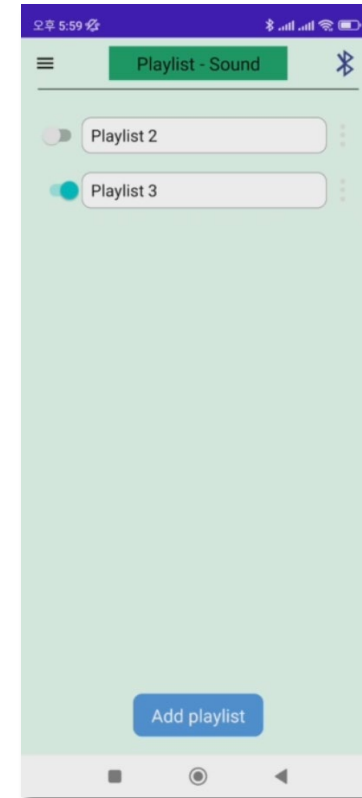


Menu



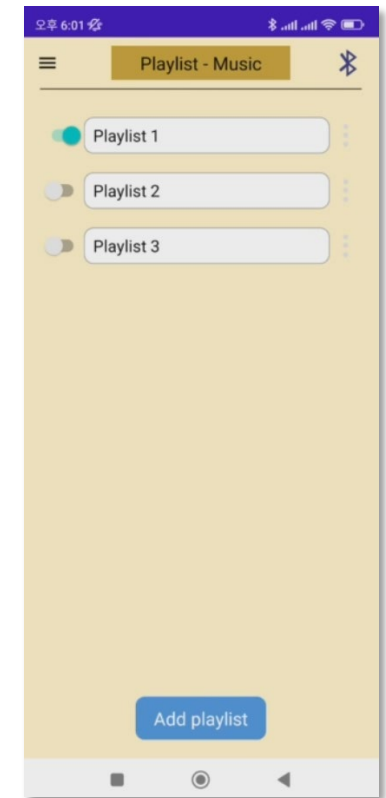
Ble scanning

※ BLE scanning, the BLE function of the user's phone must first be activated .



Sound effect mode

※ A mode that helps relieve driving stress , gun sounds , Star Wars laser guns , machine gun sounds Play sound effects, etc.



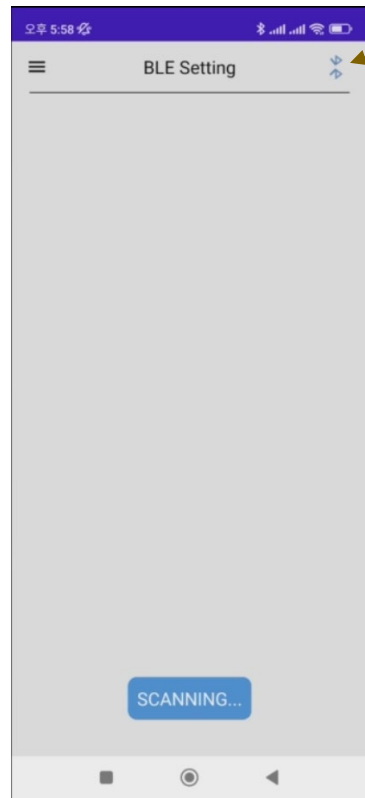
Music mode

※ Users save their favorite songs in the app You can select and listen to songs according to your mood.

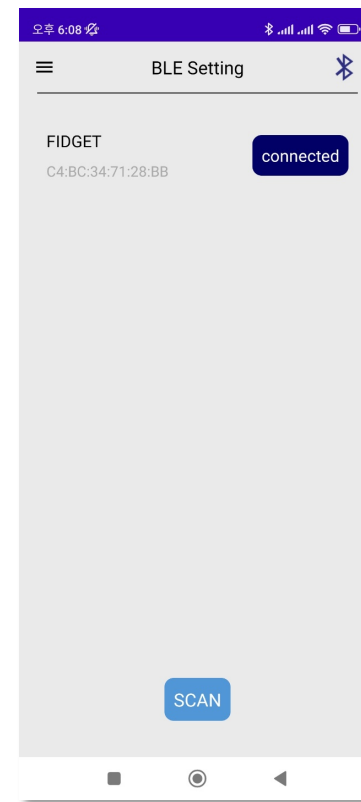
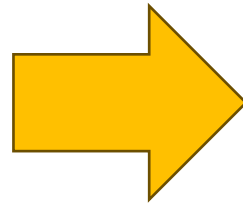
1) Bluetooth settings and connection method (BLE scanning)

Bluetooth (BLE) scanning Connects to the

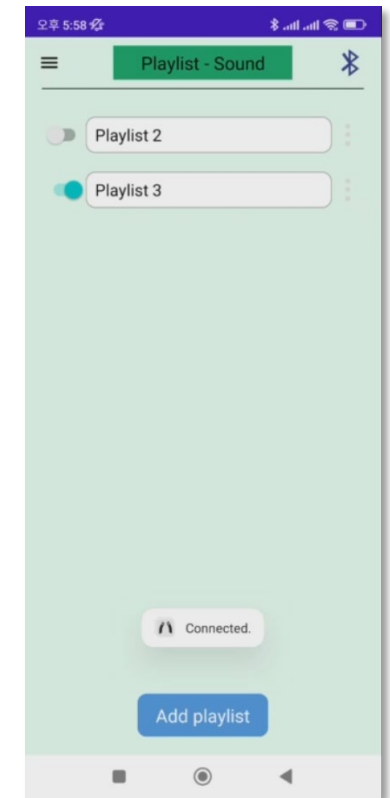
(If automatic connection is not possible , use the BLE connection (SCANNING..) button directly or the BLE Please click the ICON to connect .)



Disconnected indicator Ble icon



Connected indicator Ble icon

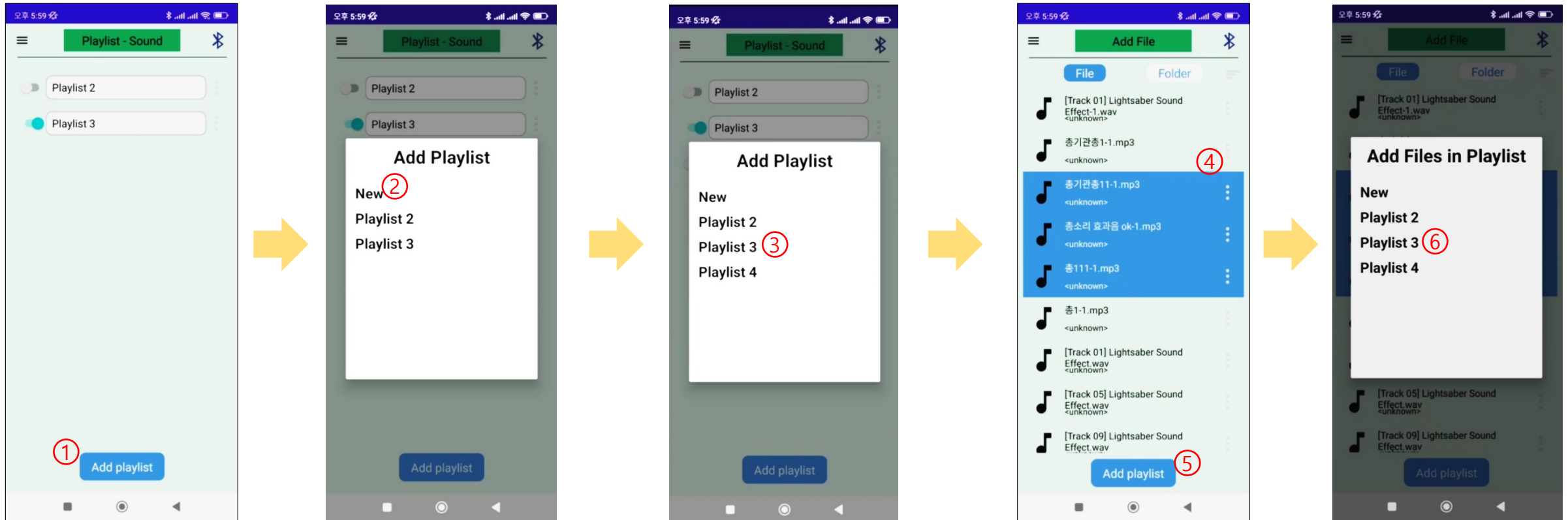


'SCAN' button to connect BLE ⇒ It goes into 'SCANNING...' state.

BLE is connected, you can check FIDGET device information.

BLE connection completion screen

2) Save the sound effect file



'Add play list' button

'New' button

(Create a list of music files to play)

Select 'play list'

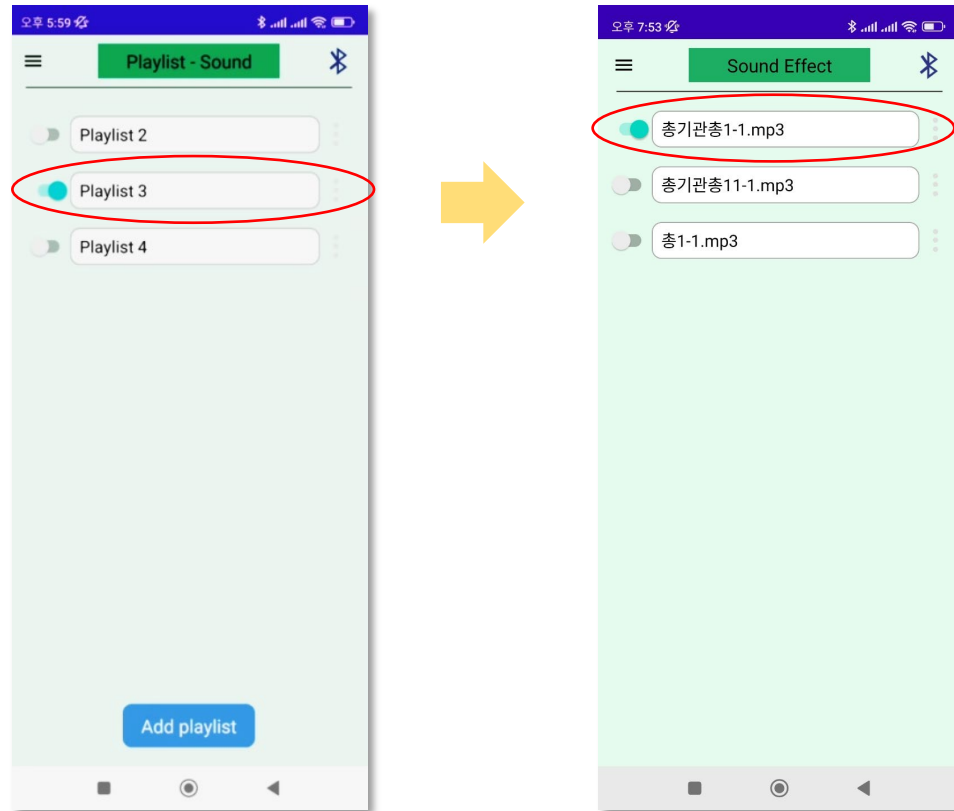
(Select the created music file list)

Select a music file ⇨ select the 'playlist' you want to save ⇨ save

(Select a music file saved in advance on your phone)

※ Sound effect sound files are not provided by the developer .
Users must secure the sound file themselves and save it on their mobile phone in advance.

3) Play sound effect



Plays the sound effect saved in the selected 'playlist 3' .

- ① In sound effect mode ⇨ press and hold the device button for 3 seconds.
⇨ Plays from the first sound effect saved in the Playlist .
- ② Stop playing sound effects
⇨ Just press the device button once
- ③ Play the next sound effect
⇨ Just press once more when the sound effect is stopped playing.

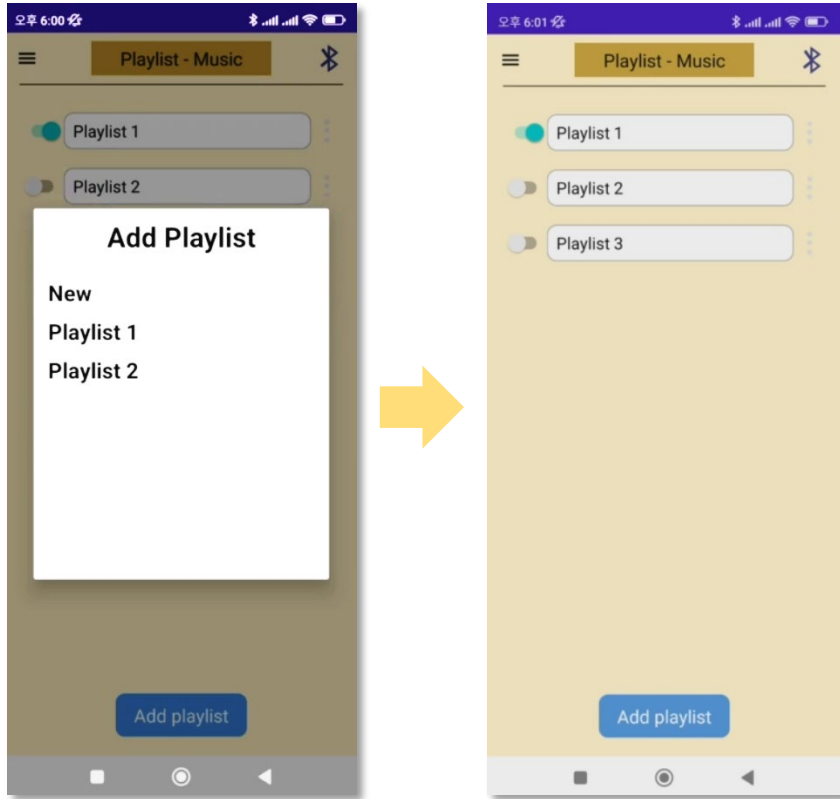
※ Note that

When the device and app are connected via Bluetooth, the sound effect mode is automatically selected first .

(Music mode selection must be selected by the user : see page 3)

- Ⓐ Music files saved on your phone You can create multiple 'play lists' that are categorized and organized .
- Ⓑ Among several 'play lists', only one 'play list' is connected to the device .
- Ⓒ To select and play a 'play list' other than the 'play list ' that is being played, touch the button in front of

4) Music mode : Saving / playing music (song) files

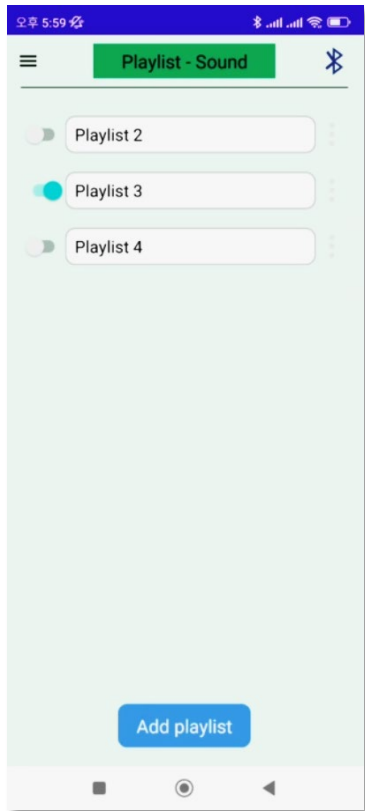


Music mode also saves music (song) files in the same way as sound effect mode.

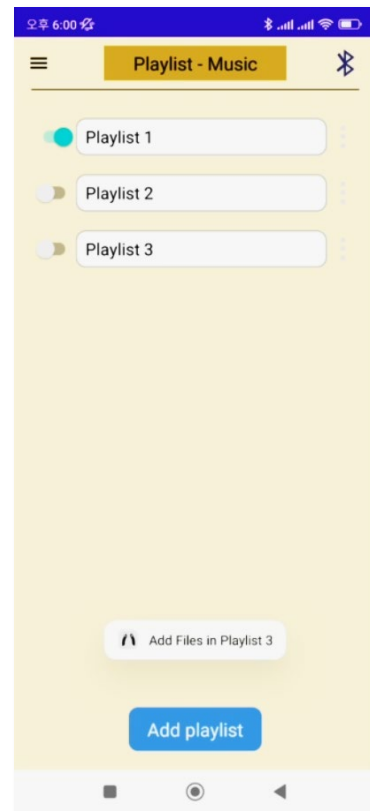
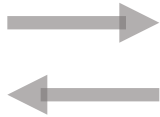
- ① In music mode ⇨ press the device button only once ⇨ the song will play
- ② When the song finishes playing, ⇨ the next song is automatically played .
- ③ To stop playing a song ⇨ Press and hold the device button for 3 seconds .
- ④ When the song is stopped (completed) , press the device button only once
⇨ The next song will be played .

※ Music (song) sound files are not provided by the developer.
The user must secure the sound source file and store it in advance on the mobile phone.

- 1) To switch between sound effect mode and music mode, press the device button twice in succession .



sound effect mode



music mode

- 2) Device The power source is a coin (CR1632) battery .
Please use a standard battery .

※ If the BLE connection is frequently disconnected, it is because the coin battery has reached the end of its life replace with new one Please .

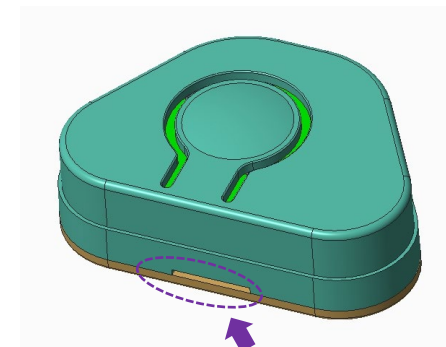


back of device module

- Coin (CR1632) battery installed -



front of device module



To replace the coin battery, separate the top and bottom of the case through this part.

※ IoT Sound Spec

- Size : 10 (short width)
- BLE : 5.X
- Power : CR1632 (3V, genuine recommended)

Label

FIDGET STEER GRIP IoT sound
MODEL NO: KHG005
FCC ID : 2BHBS-KHG005
POWER : DC 3V
MANUFACTURE: Samilbnc Co., Ltd.

This device complies with part 15 of the FCC Rules. Operation is subject to the following two conditions:

(1) This device may not cause harmful interference, and (2) this device must accept any interference received, including interference that may cause undesired operation.

Information to user.

The users manual or instruction manual for an intentional or unintentional radiator shall caution the user that changes or modifications not expressly approved by the party responsible for compliance could void the user's authority to operate the equipment. In cases where the manual is provided only in a form other than paper, such as on a computer disk or over the Internet, the information required by this section may be included in the manual in that alternative form, provided the user can reasonably be expected to have the capability to access information in that form.

For a Class B digital device or peripheral, the instructions furnished the user shall include the following or similar statement, placed in a prominent location in the text of the manual:

Note: This equipment has been tested and found to comply with the limits for a Class B digital device, pursuant to part 15 of the FCC Rules. These limits are designed to provide reasonable protection against harmful interference in a residential installation. This equipment generates, uses and can radiate radio frequency energy and, if not installed and used in accordance with the instructions, may cause harmful interference to radio communications. However, there is no guarantee that interference will not occur in a particular installation. If this equipment does cause harmful interference to radio or television reception, which can be determined by turning the equipment off and on, the user is encouraged to try to correct the interference by one or more of the following measures:

- Reorient or relocate the receiving antenna.
- Increase the separation between the equipment and receiver.
- Connect the equipment into an outlet on a circuit different from that to which the receiver is connected.
- Consult the dealer or an experienced radio/TV technician for help.

Samil B&C Co., Ltd.

We develop and supply products with keywords such as 『 New Senior 』, 『 Healthcare 』, and 『 Automotive 』 .

As a startup, we are not afraid to explore new markets ,
A company that stands out for its technological prowess and commercialization planning ability.
respect the startup spirit that leads change in the world .



삼일비앤씨

#616, 6F, 111, Sinnaejeok-ro, Jungnang-gu, Seoul, Republic of Korea

Tel | 02-2272-0464 Fax | 050-7082-3101

E-mail | samilhelp@gmail.com



samilhelp



samilbnc



samil_bnc



smartgrip.co.kr

Google

NAVER

Samilbnc



Please search