



Kogan SmarterHome™ 4MP PTZ Motion Tracking Security Camera

KASMSCPT12B

Safety & Warnings	3
Components	4
Overview	5
Installation	6
Connect to SmarterHome™ App	8
Google Home	11
Amazon Alexa	14
Operation	18
Troubleshooting	20
Notes	21

Safety & Warnings

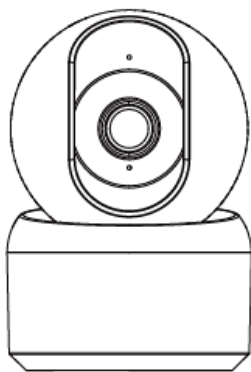
- Read all instructions and safety notes before first use. Retail this user guide for future reference.
- Avoid placing the camera near metal objects, as this may interfere with signal transmission.
- Ensure the camera is not obstructed by furniture or appliances such as microwave ovens.
- Keep the camera away from areas with tangled audio, video, or data cables to reduce interference.
- Place the camera within range of a strong Wi-Fi signal for optimal performance.
- When connecting to a new network, press and hold the reset button for approximately 5 seconds before reconnecting.

The name and content of the harmful substances in the product

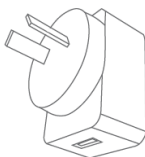
Part Name	Harmful Substance					
	Pb	Hg	Cd	Cr (VI)	PBB	PBDE
Shell	O	O	O	O	O	O
Board	X	O	O	O	O	O
Charger	O	O	O	O	O	O
Annex	O	O	O	O	O	O
This form is based on the provisions of SJ/T 11364.						

This product conforms to RoHS environmental protection requirements. At present, there is no mature technology in the world to replace or reduce the lead content in the electronic ceramics, porcelain, optical glass, steel and copper alloy.

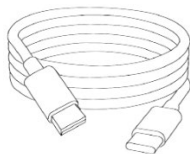
Components



Camera



Power Adaptor



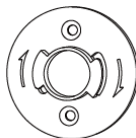
USB Power Cable



Screws (x2)



Wall Anchors (x2)

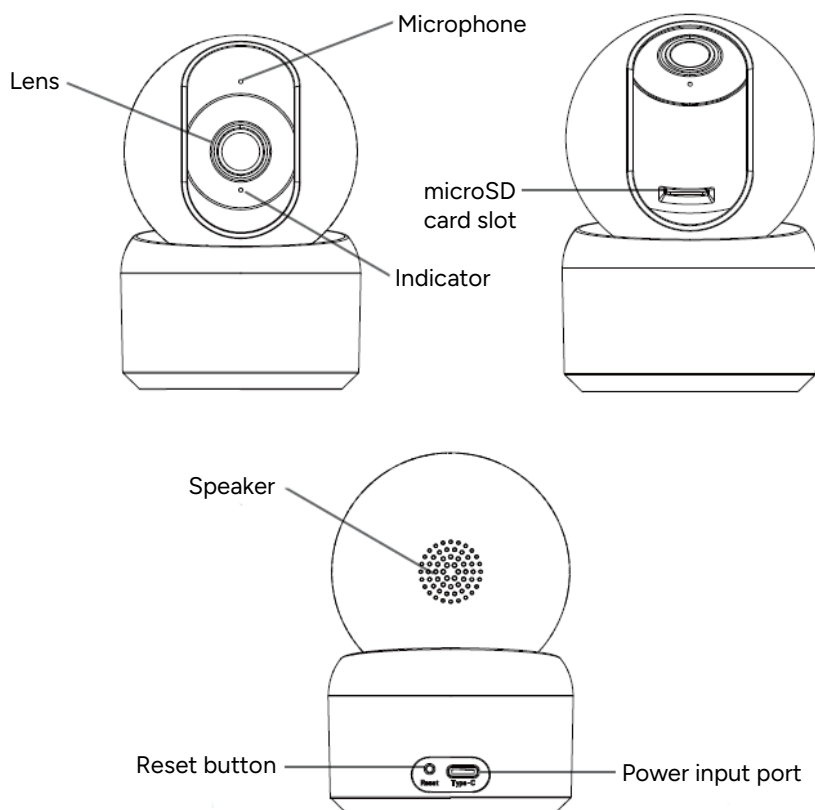


Bracket



User Guide

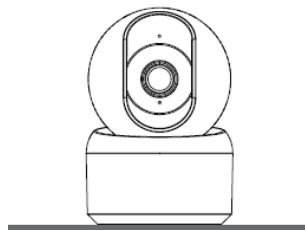
Overview



USB charging port	Use the USB power cable to connect to power adaptor.	
Indicator	Light	Status
	Solid Red	Camera not connected to Wi-Fi
	Flashing Red	Awaiting Wi-Fi connection
	Flashing Blue	Ready for connection
	Solid Blue	Camera is connected to Wi-Fi
Microphone	Captures audio	
Micro SD card slot	Supports local microSD card storage (Max. 256gb)	
Reset	Pressing and hold for 5 seconds to reset the camera. The camera will return to factory settings.	

Installation

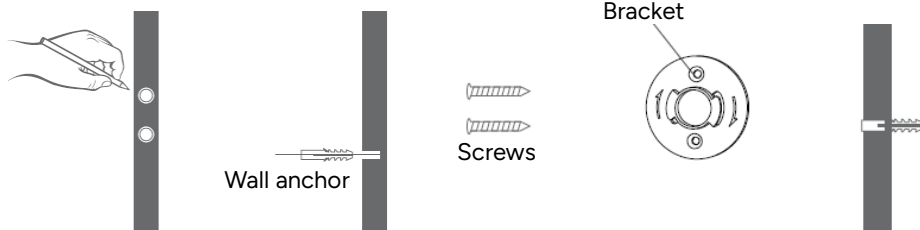
This camera can be placed on a flat horizontal surface or mounted to a wall/ceiling depending on your requirements.



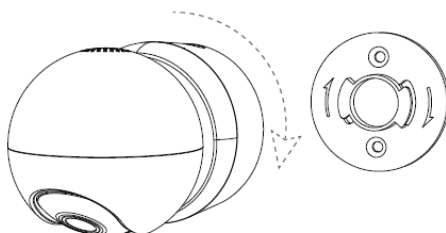
Mounting the Camera

Mounting to wall/ceiling (masonry):

1. Using the bracket as a template, mark the positions for the screw holes.
2. Drill pilot holes and insert the supplied wall anchors first.
3. Place the bracket against the surface, in line with the wall anchors, and secure it in place with the supplied screws.

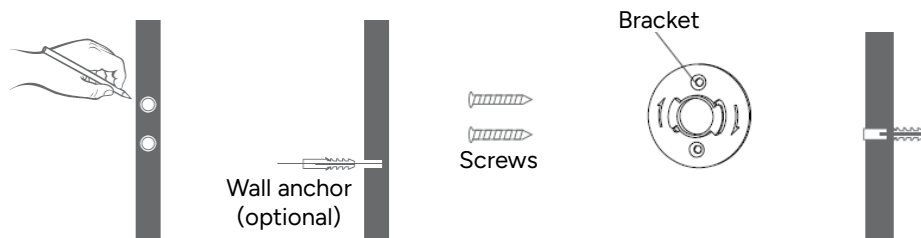


4. Attach the camera to the bracket and secure it in place by rotating it clockwise.



Mounting to wall/ceiling (timber / dry wall):

1. Using the bracket as a template, mark the positions for the screw holes.
2. If not drilling into wall studs, drill pilot holes and insert the supplied wall anchors first
3. Place the bracket against the surface, in line with the wall anchors (if used) and secure it in place with the supplied screws.
4. Attach the camera to the bracket and secure it in place by rotating it clockwise.



Connecting to Power

1. Connect the USB power cable into the USB port on the camera.
2. Connect the USB power cable to the power adaptor and plug it into an electrical outlet.
3. The baby monitor will then turn on.

Place the Camera in Pairing Mode

1. Press and hold the reset button for 5 seconds.
2. The indicator will start flashing blue.

SD Card

Insert a high-speed Micro SD card (256gb max.) into the SD card slot on the camera. This will allow you to store and view the camera feed.

Connect to the SmarterHome™ App

Install the App

Download the Kogan SmarterHome™ app from the Apple App Store (iOS) or the Google Play Store (Android).



App Store (iOS)

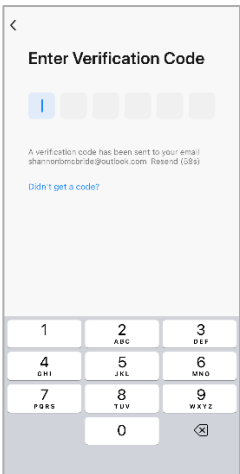
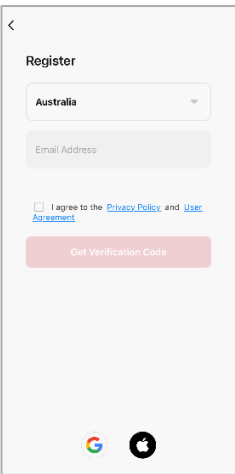
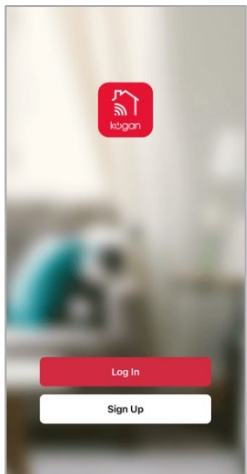


Play Store (Android)

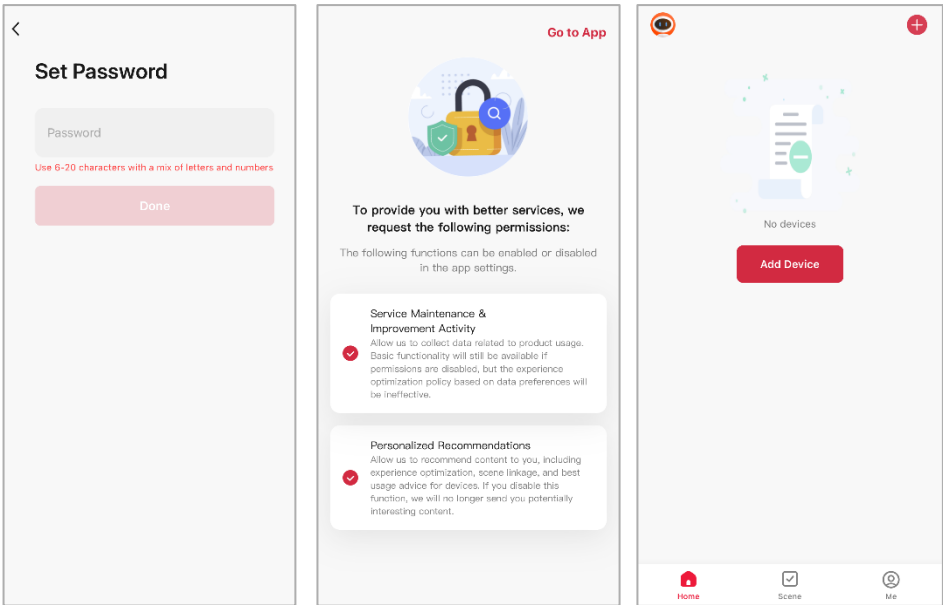


Log In or Sign Up

1. If you already have a SmarterHome account, tap 'Log In'. To register a new account, tap 'Sign Up'.
2. The app will automatically recognise your country. If needed, you can manually select your country from the drop down menu. Enter your email address, agree to the Privacy Polics and User Agreement, and tap 'Get Verification Code' to continue.
3. A 6-digit code will be sent to the submitted email address. Enter the code before the one-minute timer expires.



- 4. Enter a password that uses 6-20 characters with a mix of letters and numbers and tap 'Done'.
- 5. Enable the permissions and tap 'Go to App'.



Set the Device in Pairing Mode

When the device is first turned on, it may automatically enter pairing mode (indicator is flashing blue).

If not automatically in pairing mode when powered on, you can manually set the device in pairing mode by pressing and holding the reset button for 5 seconds until the indicator begins flashing blue.

Add the Device to the App

1. Open the SmarterHome™ app.
2. Tap the '+' icon in the top right corner of the screen and then tap 'Add Device'.
3. Tap 'Add' when the device appears. Alternatively, select the product type from the list of options in the app (Home Security > Camera)
4. Follow the prompts to add your device to the app.

Notes:

- The device and the app must use the same Wi-Fi network.
 - The device is only compatible with 2.4Ghz networks.
5. If the QR code connection fails, after selecting the product type from the list of options, change the connection type to 'EZ Mode' from the drop-down menu in the upper right corner.
 6. Follow the prompts to add your device to the app.

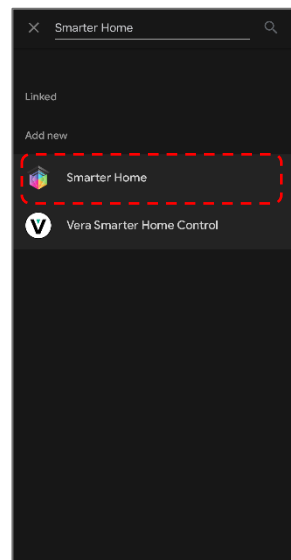
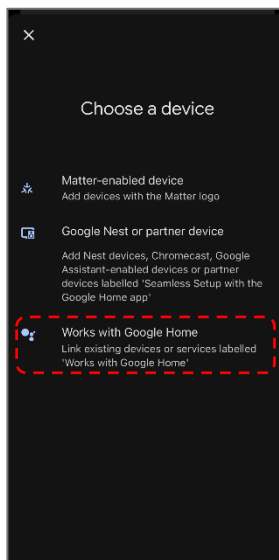
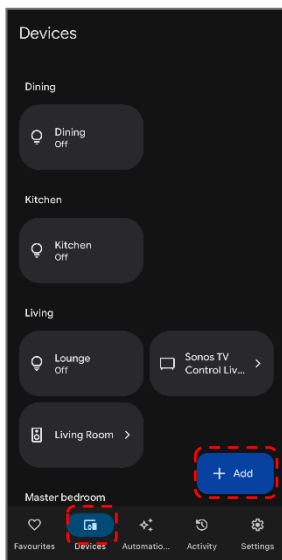
Connectivity Support

Scan the QR code below or go to <https://help.kogan.com/s/article/Kogan-SmarterHome-App-Connectivity-Support> and follow the pairing instructions for EZ mode.

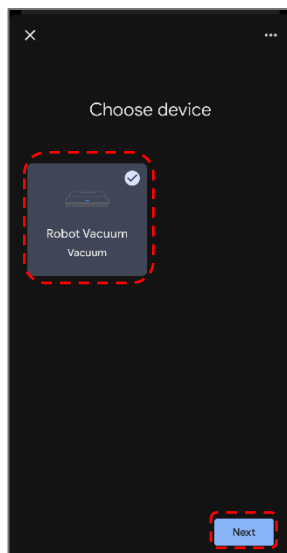
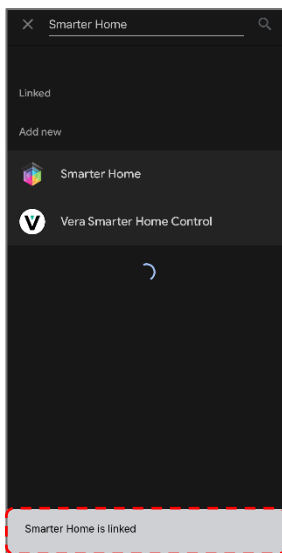
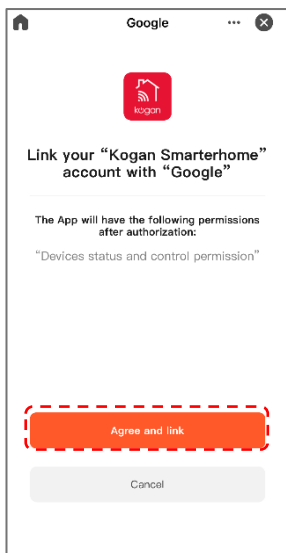


Google Home

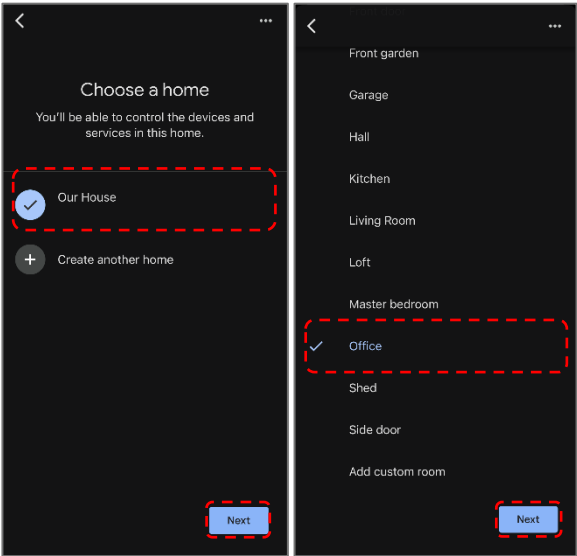
1. Ensure you are logged into the Kogan SmarterHome™ app.
2. Open the Google Home app.
3. Go to the devices tab and tap the '+ Add' button in the lower right corner.
4. Tap 'Works with Google Home'.
5. Search for 'Smarter Home' in the search bar and select 'Smarter Home' from the results.



6. Tap the 'Agree and link' button.
7. Search for 'Smarter Home' in the search bar and select 'Smarter Home' from the results.
8. Once linked, a 'Smarter Home is linked' pop-up will appear at the bottom of the screen.
9. Tap your device and then tap the 'Next' button.

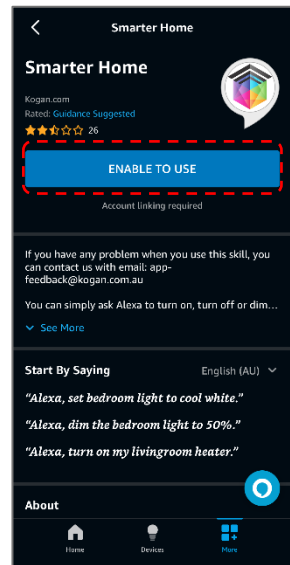
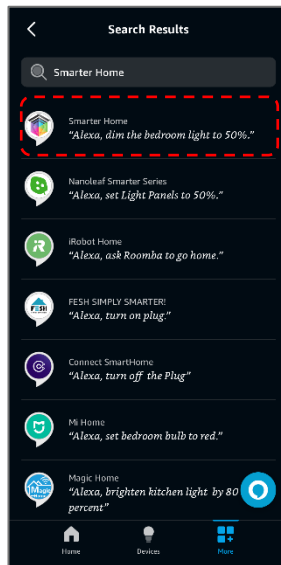
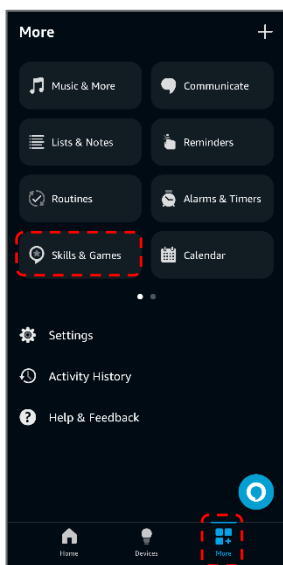


- 10. Select the home you wish to add the device to and tap the 'Next' button.
- 11. Select the room your device is in and tap the 'Next' button.

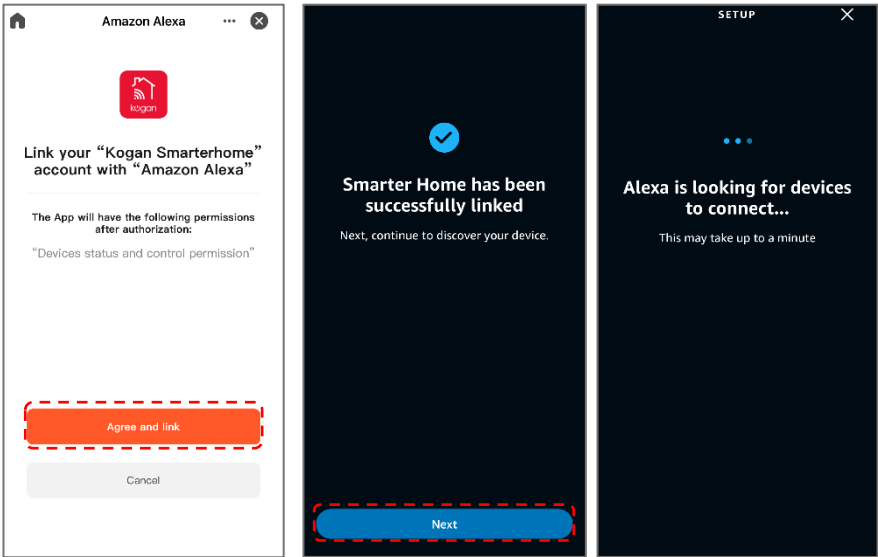


Amazon Alexa

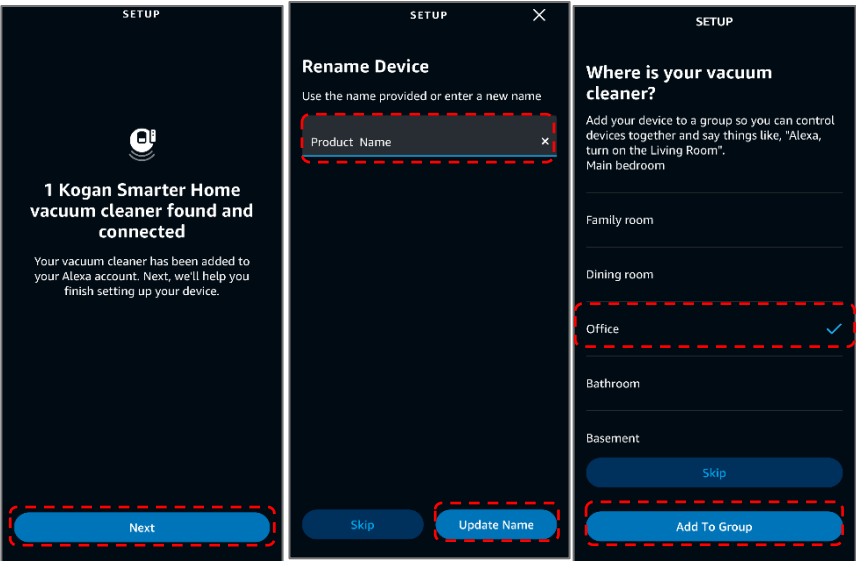
1. Ensure you are logged into the Kogan SmarterHome™ app.
2. Open the Amazon Alexa app.
3. Go to the 'More' tab and tap 'Skills & Games'.
4. Search for 'Smarter Home' in the search bar and select 'Smarter Home' from the results.
5. Tap the 'ENABLE TO USE' button.



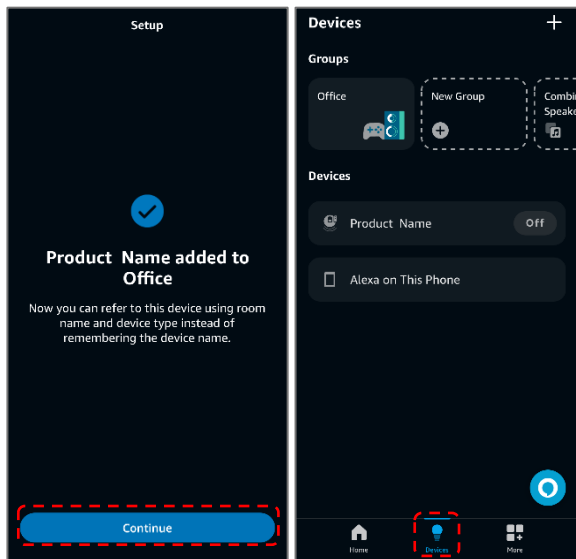
- 6. Tap the 'Agree and link' button.
- 7. Once linked, tap 'Next'. Alexa will search for any compatible devices.



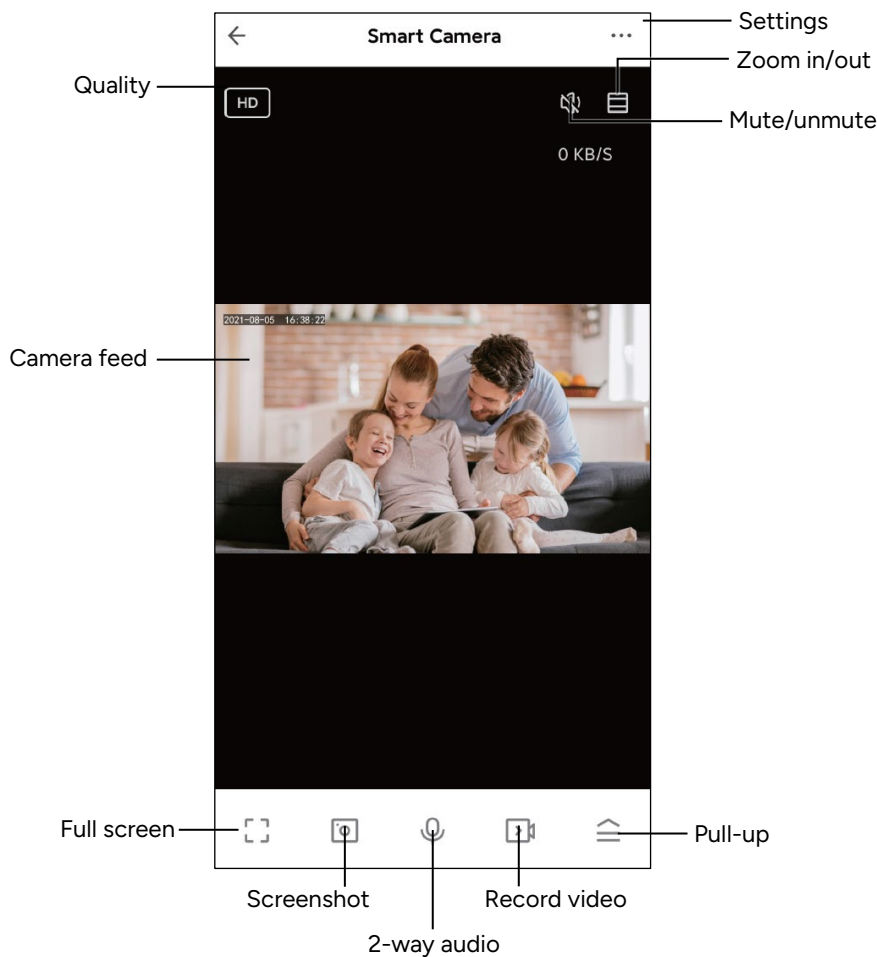
- 8. Once your device has been found, tap 'Next'.
- 9. Rename the device to your desired name and tap 'Update Name'.
- 10. Select the room your device is in and tap 'Add To Group'



11. Once the device has been successfully added to your desired room, tap 'Continue'.
12. You can view and manage your device from the 'Devices' tab.



Operation



Settings

In the Smart Camera interface, click '...' in the upper right corner to access the camera's settings.

Pan / Tilt

Rotate the camera by sliding your finger on your smartphone's screen, allowing you to have a greater field of vision.

Video flip

Flip your video stream vertically. This is useful if you've mounted the camera upside down.

Motion Detection

Smart motion detection will send push notifications to your smartphone once abnormal movement is detected.

Screenshot

Saves a screenshot of the current video feed to the microSD card.

Speak

Enables 2-way audio using the camera's built-in microphone and speaker.

Record

This function allows 24-hour continuous recording using high-capacity microSD card storage (max. 256GB).

Day & Night

Never miss a moment, even in complete darkness, with powerful night-vision technology

Troubleshooting

Issue	Possible solution
The device cannot be connected properly	<ul style="list-style-type: none"> • Check whether the network is operating correctly. • Ensure the camera is positioned closely to the router. • Ensure you are connecting to a 2.4Ghz network, and that this is the network you are currently connected to on your smartphone. • Double check that you have read through the instructions correctly, that the indicator light is flashing and ready for connection before attempting to pair. • If this does not work, we recommend resetting the device and attempting again.
The device is still appearing in SmarterHome™ app after resetting	Resetting device only initializes network configuration of the camera, but cannot change the configuration in the app. To stop it appearing in the app, you must also remove the device from the app.
How to change the camera network to another router	First remove the device from the app, then reset the device manually. It is now ready to pair using a new network or device.
Device isn't identifying the microSD card	<ul style="list-style-type: none"> • It is recommended to insert the microSD card while power is off. • Confirm whether the microSD card is normally available and ensure the format is FAT32. • Sometimes the microSD card may not be identified when the internet connection is not stable.
Push notifications are not appearing	<ul style="list-style-type: none"> • Confirm that the app has been running on the phone and the relevant reminder function has been enabled from the settings list. • Ensure message notification and app permissions have been enabled on the smart phone.

Notes

[illegible]

[illegible]

[illegible]

Need more information?

We hope that this user guide has given you the assistance needed for a simple set-up.

For the most up-to-date guide for your product, as well as any additional assistance you may require, head online **help.Kogan.com**.

