

Saddle flange SF

Construction element - Saddle flange SF



Pipe installation in escape route



Cantilever with saddle flange

4

Applications

- For solid connections between the massive profile and building structures.
- For use in dry interior areas.

Certificates



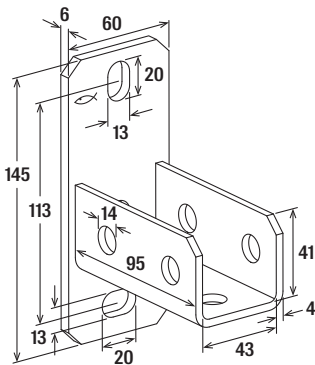
Advantages

- The perfect-fit saddle of the SF enables a simple installation by inserting the channel.
- The saddle flange's stable design offers a secure hold for a load-bearing construction.
- Fire resistance classification R120 & German model pipeline system guideline MLAR R30.

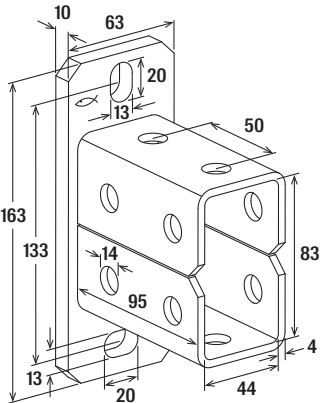
Properties

- Material base plate: steel DC01 (material no.1.0330) acc. to DIN EN 10139
- Zinc plating base plate: electro zinc-plated
- Material U-Profile: steel S235JR (material no. 1.0037) acc. to DIN EN 10025
- Zinc plating U-Profile: electro zinc-plated

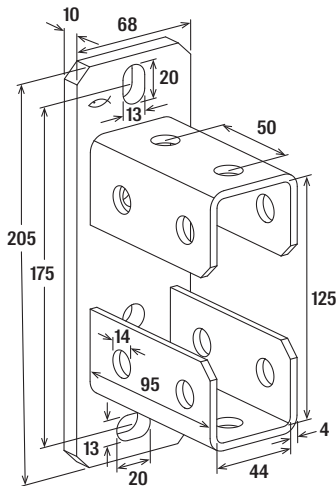
4



SFL 41



SFL 82



SFL 124

Technical data

	Item no.	Fire test report	For profile	Sales unit
Item				[pcs]
SFL 41	504355	Yes	21, 41, 21D, 62	10
SFL 82	504357	–	41	5
SFL 124	504358	–	62	5

See channel nut FCN Clix P for loads.

Saddle flange SF hdg

Construction element - Saddle flange SF hdg



Pipe installation in escape route



Cantilever with saddle flange

10

Applications

- For solid connections between the channel and building structures
- For indoor and outdoor application.

Certificates

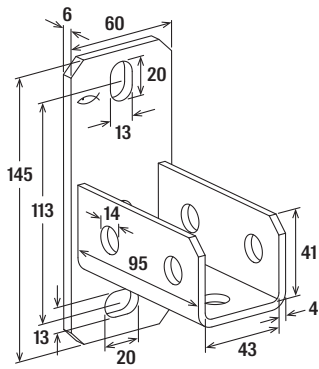


Advantages

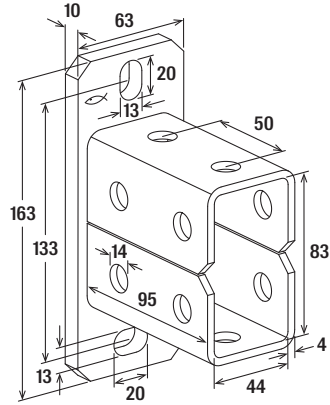
- The perfect-fit saddle of the SF allows simple installation by inserting the mounting channel.
- The saddle flange's stable design offers a secure hold for load-bearing construction.
- Fire protection test R120.
- Sample cable system directive test MLAR R30.

Properties

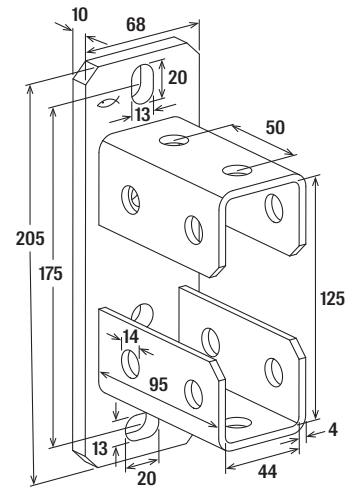
- Material base plate: steel DC01 (material no. 1.0330) acc. to DIN EN 10139
- Zinc plating base plate: hot-dip galvanised
- Material U-Profile: steel S235JR (material no. 1.0037) acc. to DIN EN 10025
- Zinc-plating U-Profile: hot-dip galvanised



SF L 41



SF L 82



SF L 124

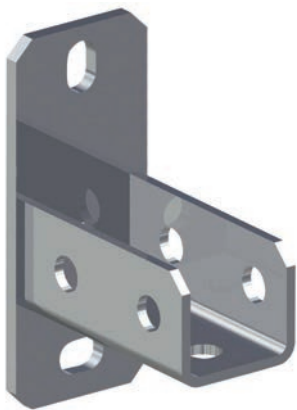
Technical data

	Item no.	Fire test report	For profile	Sales unit
Item				[pcs]
SF L 41 hdg	517421	Yes	21, 41, 21D, 62	10
SF L 82 hdg	538125	–	41	5
SF L 124 hdg	538126	–	62	5

See channel nut FCN Clix P hdg. for loads

Saddle flange SF L 41 A4

Construction element - Saddle flange SF L 41 A4



Pipe installation in escape route

12 Applications

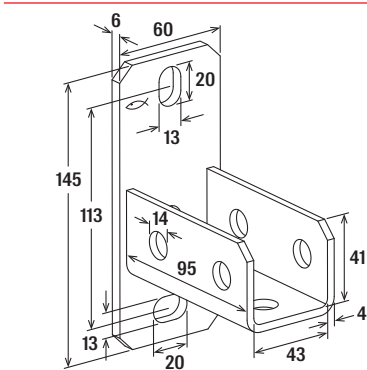
- For solid connections between the massive profile and building structures.
- For indoor and outdoor applications and in environments with high stress to components due to corrosion.

Advantages

- The perfect-fit saddle of the SF enables a simple installation by inserting the channel.
- The saddle flange's stable design offers a secure hold for a load-bearing construction.
- Fire resistance classification R120 & German model pipeline system guideline MLAR R30.

Properties

- Material: stainless steel A4 (material no. 1.4401) acc. DIN EN 10088-1



SF L 41

Technical data

	Item no.	Fire test report	For profile	Sales unit
Item				[pcs]
SF L 41 A4	504522	Yes	FUS 21 + FUS 41	10