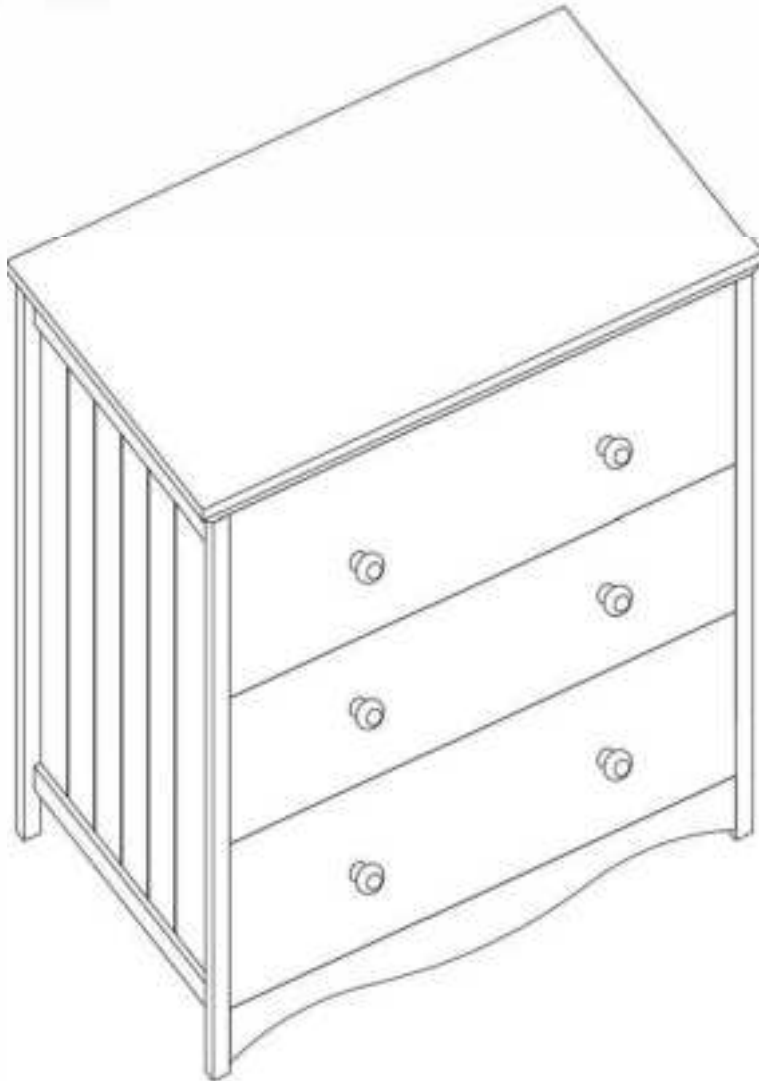




DRAWER DRESSER

ASSEMBLY INSTRUCTION



Thank you for purchasing!

Please contact us via email if parts are missing or damaged, we will gladly ship your replacement parts free of charge

⚠ IMPORTANT

THIS INSTRUCTION BOOKLET CONTAINS IMPORTANT SAFETY INFORMATION.
PLEASE READ AND KEEP FOR FUTURE REFERENCE.

CONTENT

1. Return & Warranty.....	1
2. Before Starting	2
3. Assembly Tips.....	3
4. Identify Parts	4
5. Guide to Paint	7
6. Assembly Steps	8
7. FAQs	22
8. Supplementary Instruction for Safe Use	23

RETURN & WARRANTY

Thank you for choosing our product!

We would like to take this opportunity to thank you for choosing.

We hope that you are completely satisfied with your purchase, and enjoy it for years to come.

Your satisfaction is our highest pursuit.

Return policy

We believe you will absolutely love your 3-drawer dresser, but if for some reason you want to return the product, please contact us directly before you decide to return your product to the retailer. Our Customer Service organization can answer most concerns and can assist you with any questions you may have about your new product.

The item must be returned in good condition, in original box, with all original proof of purchase, parts and accessories, within the time frame specified by the retailer it was purchased from.

Warranty

We warrant this product to be free from defects in material and workmanship agrees to remedy any such defect. This warranty covers one year from the date of original purchase. This is solely limited to be repair or replacement of defective parts and no assembly labor is included.

This warranty does not apply to any product which has been improperly assembled, subjected to misuse or abuse or which has been altered or repaired in any way.

Components repaired or replaced warranted through the remainder of the original warranty period only. The defective components will be repaired or replaced without charge, subject to the terms and conditions described above.

For help with assembly, identifying parts, product information or to order parts, please contact us freely.

BEFORE STARTING

Before Using Product



- ☐ Read each step carefully before starting. It is very important that each step is performed in the correct order. If these steps are not followed in sequence, assembly difficulties will occur.



- ☐ Make sure all parts are included. Most board parts are labeled or stamped on the raw edge.

- ☐ Prepare a flat and Philips screwdriver (not included)
A Power Screwdriver is recommended.



- ☐ Recommended # of people needed for assembly: 1 (however it is always better to have an extra hand).

Estimated assembly time is 4 hours



- ☐ Work in a spacious area and near where the unit will be used, preferably on a carpet, or use a piece of the cardboard packaging to protect your floor and product.



- ☐ For a smooth assembly process, we suggest you keep a lite tightness for all the screws during assembly. After the whole product is assembled, firmly tighten all the screws.



WARNING:

- Do not allow children to climb on unit
- Serious or fatal crushing injuries can occur from furniture tip-over. To prevent this furniture from tipping over, it must be permanently fixed to the wall. Fixing devices for the wall are not included since different wall materials require different types of fixing devices. Use fixing devices suitable for the walls in your home. For advice on suitable fixing systems, contact your local specialized dealer
- Avoid sharp objects or corrosive chemicals to prevent damage to the product
- During assembly, keep parts and packaging materials away from children and pets as there could be potential injury and choking hazards

ASSEMBLY TIPS

Applicable Model



OVERALL SIZE:

31.5"W x 17.7"D x 29.9"H
80cm x 45cm x 76cm(LxWxH)

FEATURES:

Solid Wood
DIY Its Color
3-Drawer Storage Space



Estimated Time for Assembly

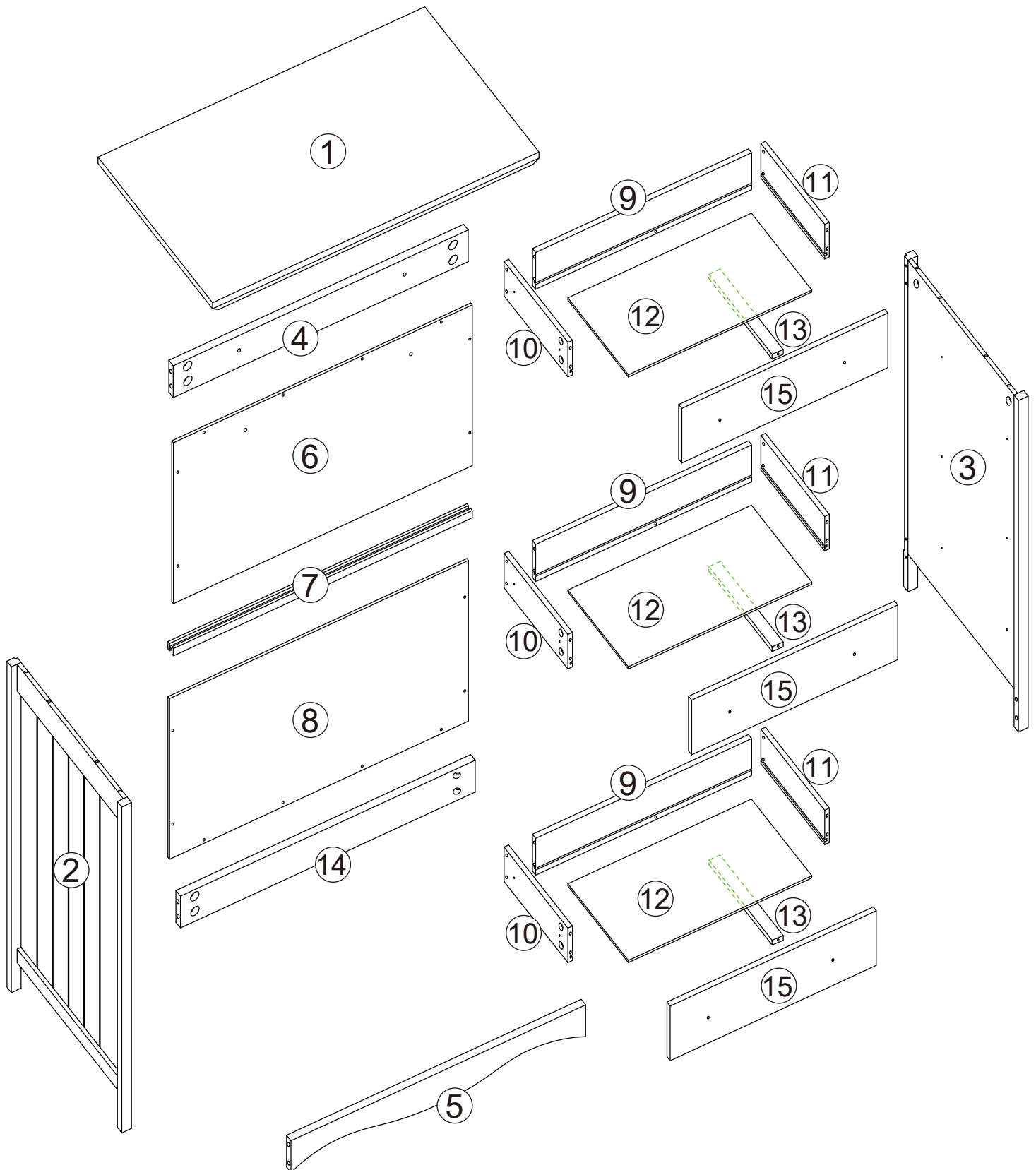
240 mins

Caution:

1. This product is designed for home use and not intended for commercial use.
2. This product contains small components. Please ensure that they are kept away from small children.
3. Be careful when using power tools to assemble your furniture. Power tools may strip or damage the parts.

IDENTIFY PARTS

One unit per box



COMPONENTS

1



Top Panel x1

2



Left Side Panel x1

3



Right Side Panel x1

4



Back Upper Support Panel x1

5



Front Foot Panel x1

6



Back Panel x1

7



Back Panel Connecting Strip x1

8



Back Panel x1

9



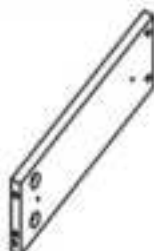
Drawer Back Panel x3

10



Drawer Left Panel x3

11



Drawer Right Panel x3

12



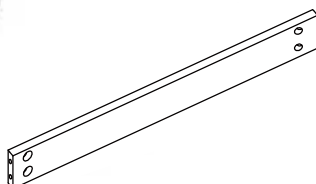
Drawer Bottom Panel x3

13



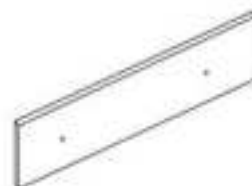
Drawer Bottom Support Panel x3

14



Back Lower Support Panel x1

15



Drawer Front Panel x3

COMPONENTS

A



Wood Dowel x4

B



+2(spare)

Cam Bolt x34

C



+2(spare)

Cam Lock x34

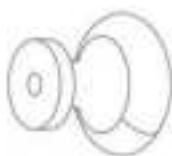
D



+1(spare)
4x30mm

Screw x12

E



Handle x6

F



3x25mm

Screw x6

G



Drawer Slide x6

H



+2(spare)
3x12mm

Screw x24

I



Expansion Screw x2

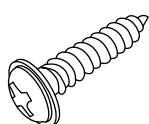
J



4x50mm

Screw x2

K



+2(spare)
2x10mm

Screw x16

GUIDE TO PAINT

Your furniture is part of nature's handwork. Every item has its own unique grain pattern and color. We recommend that you finish painting before assembly to avoid dead spots that cannot be covered by paint.

Take your time to finish, remember don't rush - it may take a little longer, but you will be proud of the results.

Step 1: Prep-Undercoat

- A. Sand | Before sanding, make sure the wood is clean and dry. Start sanding with (#220) sandpaper in the direction of the wood grain. Wipe off all the sanding dust with a tack cloth (Old T-shirt works great);
- B. Pre-Stain the undercoat | Condition with undercoat (Oil-Based Pre-Stain Wood Conditioner). Allow 5-15 minutes to penetrate and then wipe with a lint-free rag. Allow 1-2 days to dry (Different undercoat, different drying time);
- C. Repeat A & B | Never skip the initial sanding of all parts. This helps you reach the most uniform color.

Step 2: Stain (Skip this step if you want to keep the original color)

- A. Stir your stain | Be sure stain is stirred thoroughly. Even 5 minutes of stirring is common. This keeps the stain color consistent from the top of can to the bottom;
- B. Pre-test | It's a good idea to pre-test the color in a hidden spot. This will allow you to check stain color before proceeding;
- C. Stain | Start staining by going with the grain using a natural bristle brush. Wait 5-15 minutes to penetrate and then wipe with a lint-free rag in the direction of the wood grain to remove the excess stain and blending the lighter and darker areas together. Allow 1-2 days to dry;
- D. Repeat C | One coat is adequate. For more intense color, repeat the application process.

Step 3: Protect-Topcoat

- A. Apply Topcoat | Apply a thin topcoat (polyurethane protective topcoat) in the direction of the wood grain. Allow 1-2 days to dry;
- B. Repeat A | Repeat 1 or 2 more times for optimal protection. Always sanding lightly with a (#220) sandpaper and wipe off all the sanding dust with a lint-free rag between coats

Tips:

- A. Stain one surface at a time and do the harder areas first. There is no particular motion to apply the stain, we recommend to do cross grain first and then with the grain;
- B. As you stain each area, wipe excess stain off with the grain, then move to another area, as you finish, go back over the entire piece with a clean rag to wipe up all excess stain;
- C. Apply at least one coat of stain or clear finish to all surfaces of the item. Topcoats provide long-lasting beauty and protection from cracking and everyday wear and tear;
- D. Paint needs to be done before assembly, otherwise it will lead to incomplete covering of product gaps and dead ends.

ASSEMBLY STEPS

Hi dear! After the prep work, I believe you are looking forward to starting assembly. Please remember to read through the manual first and take your time!

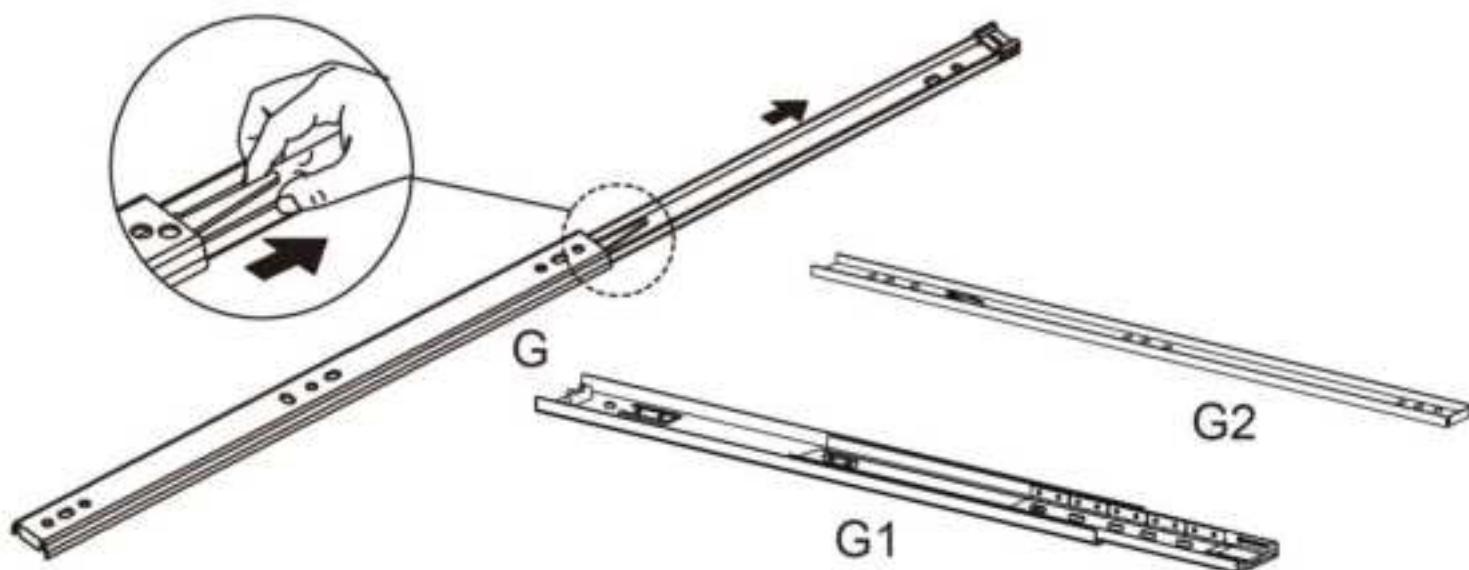
G



Drawer Slide x6

STEP 1

Press the detach button down to detach the Drawer Slide(G) into 2 parts:
G1 G2



ASSEMBLY STEPS

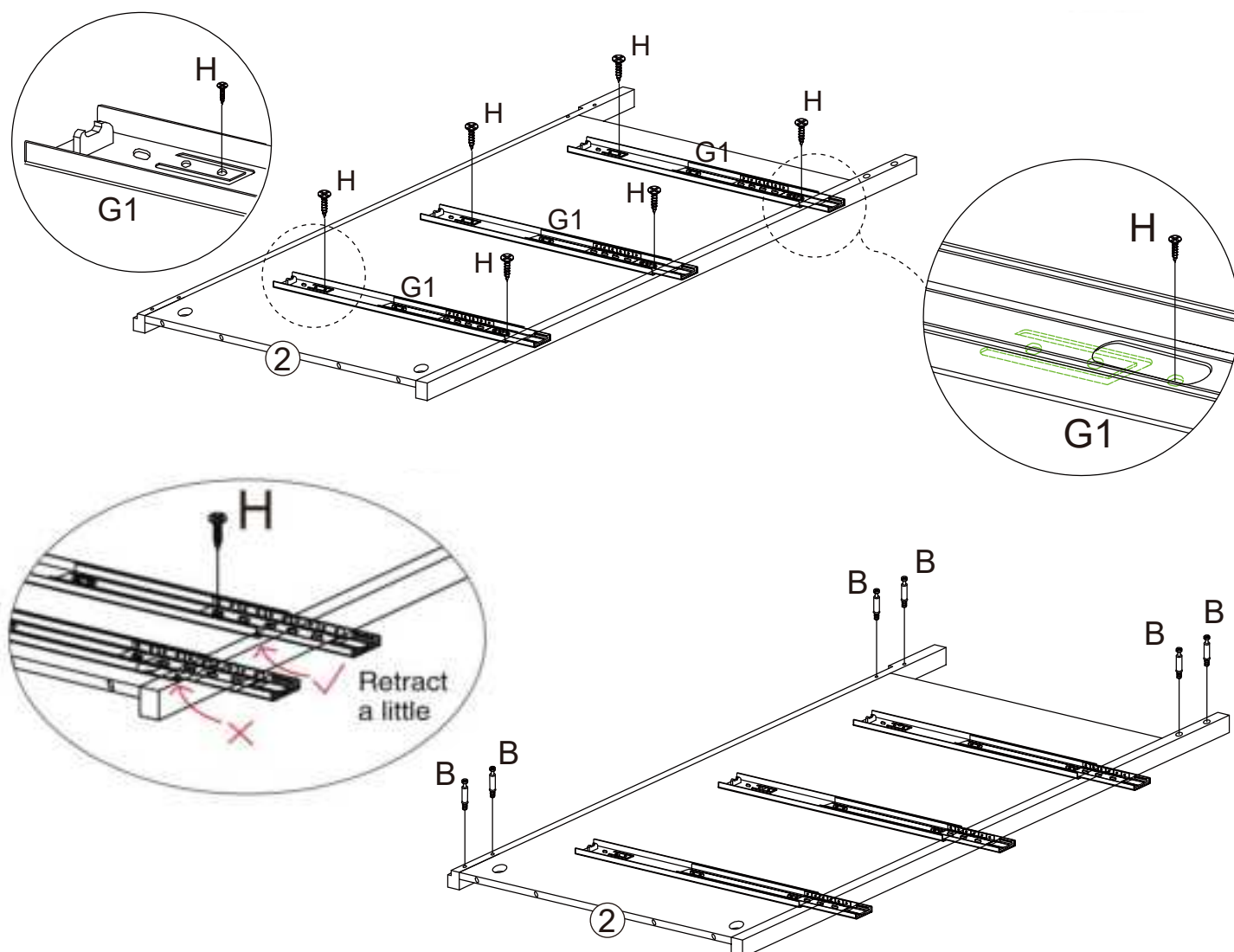


STEP 2

Fix Drawer Slide(G1) to Panel #2 with Screw(H)

Screw Cam Bolt(B) to Panel #2

Note! The pre-drilled holes on the panel for locating the slide rail are relatively small, look carefully. Please don't worry, they are there



ASSEMBLY STEPS

B

Cam Bolt x6

G

Drawer Slide x3

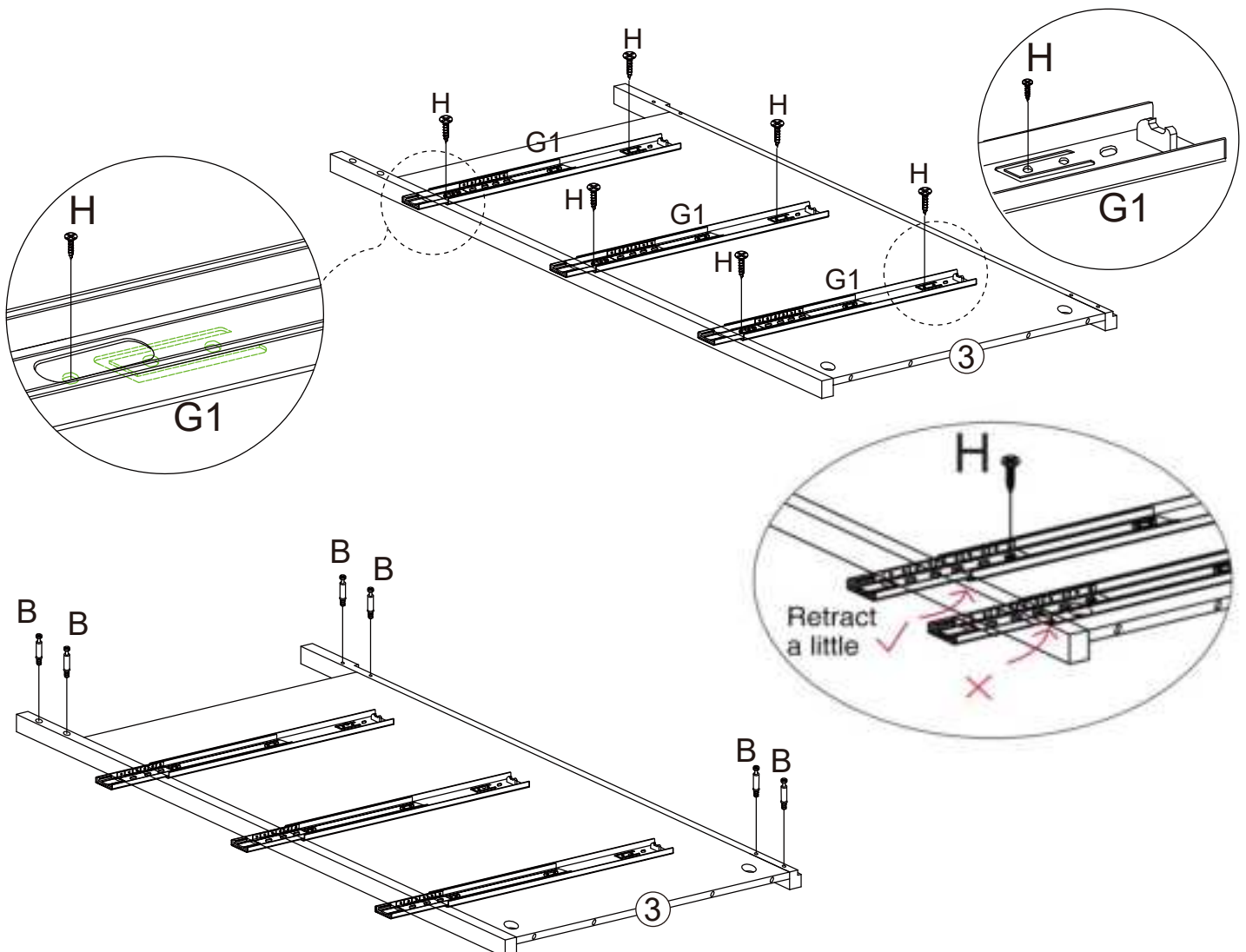
H

3x12mm

Screw x6

STEP 3

Fix Drawer Slide(G1) to Panel #3 with Screw(H) as the same way to Step 2
Screw Cam Bolt(B) to Panel #3



ASSEMBLY STEPS

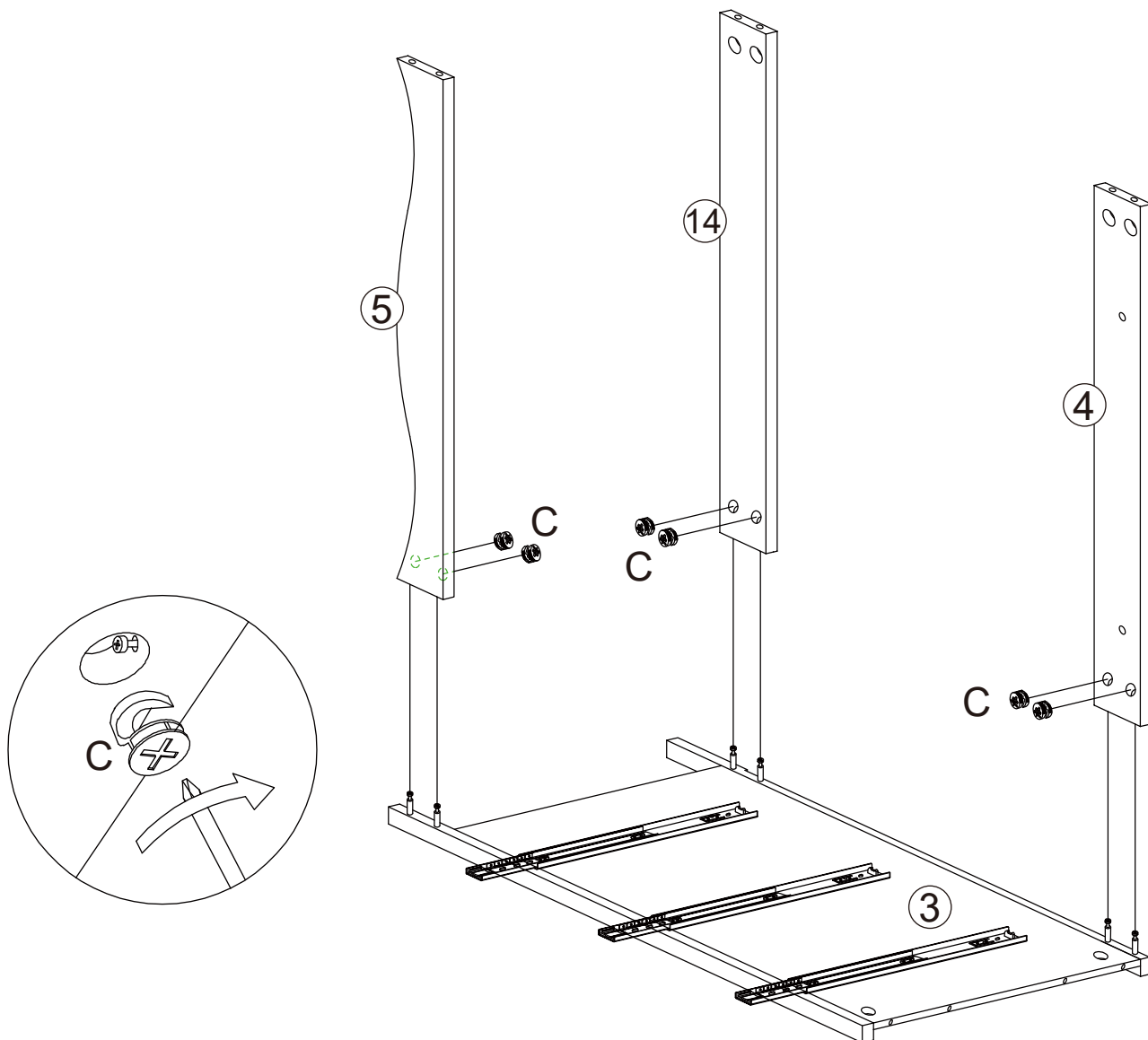
C



Cam Lock x6

STEP 4

Connect Panel #4 #5 #14 to Panel #3 in turn and fix them with Cam Lock(C)



ASSEMBLY STEPS

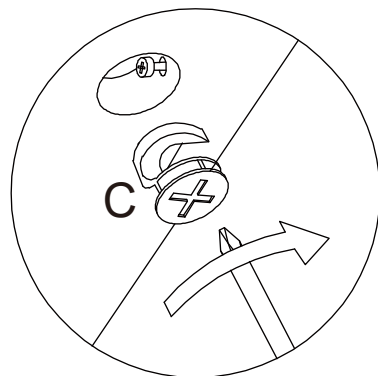
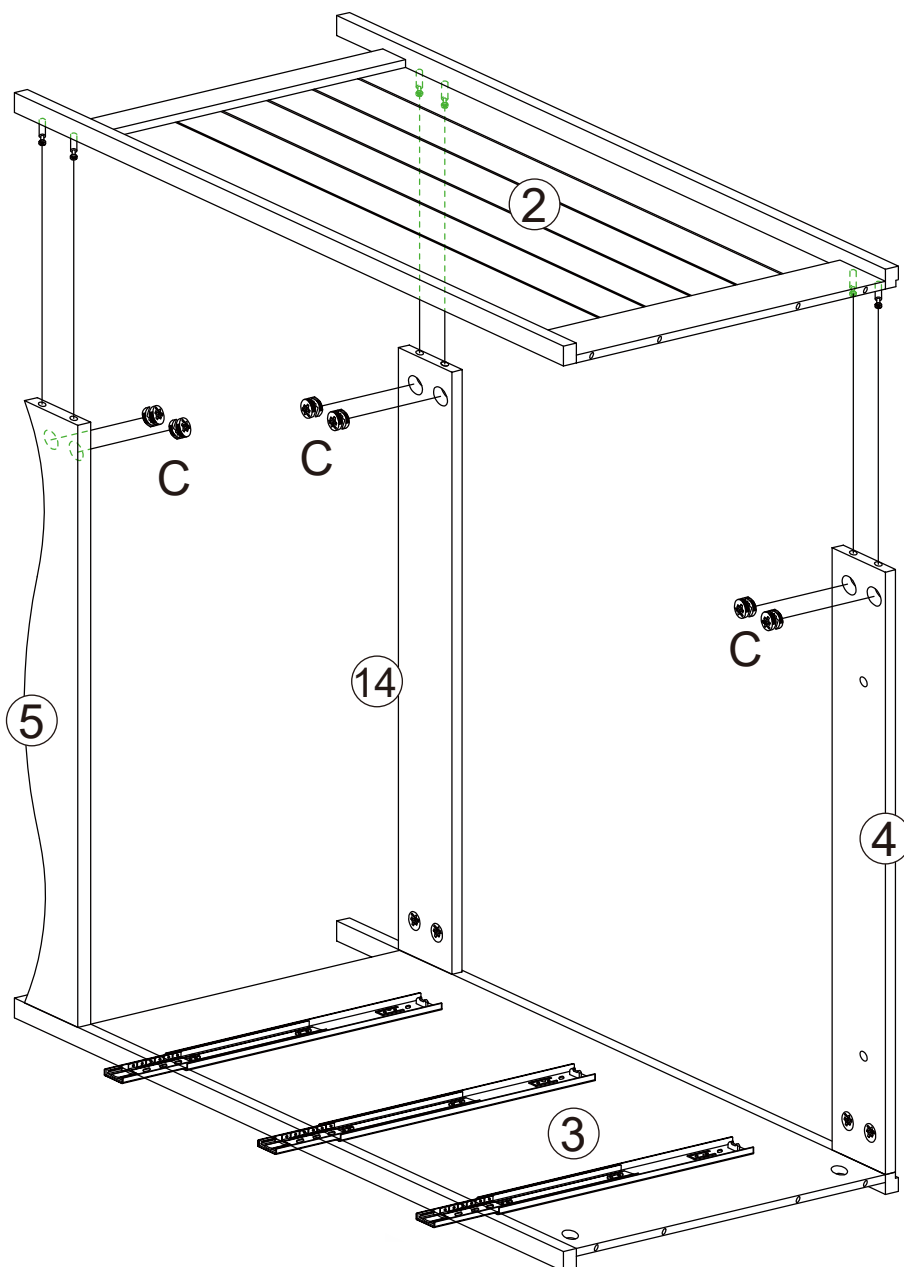
C



Cam Lock x6

STEP 5

Connect Panel #2 to the frame and fix them with Cam Lock(C)



ASSEMBLY STEPS

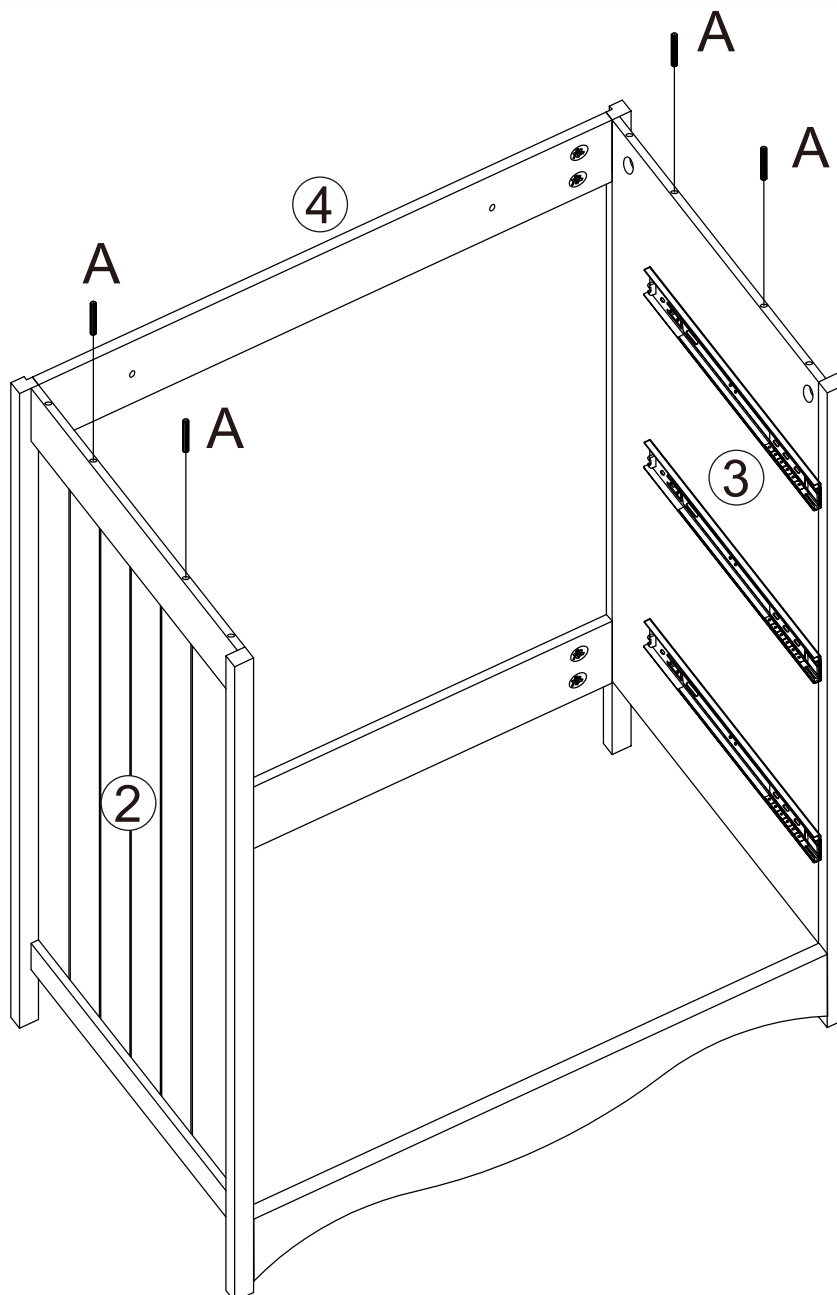
A



Wood Dowel x4

STEP 6

Insert Wood Dowel(A) into the top holes of Panel #2 #3



ASSEMBLY STEPS

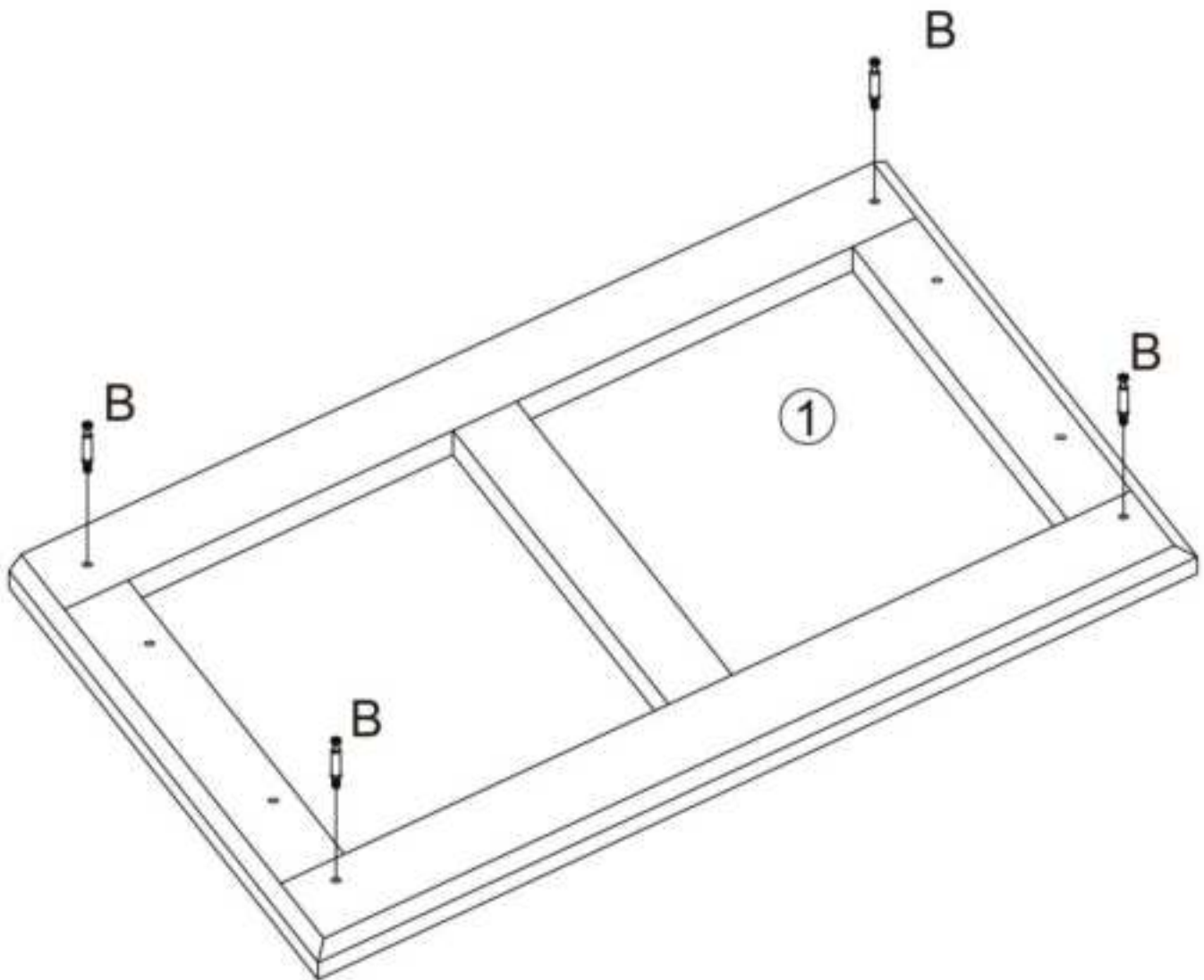
B



Cam Bolt x4

STEP 7

Screw Cam Bolt(B) to Panel #1



ASSEMBLY STEPS

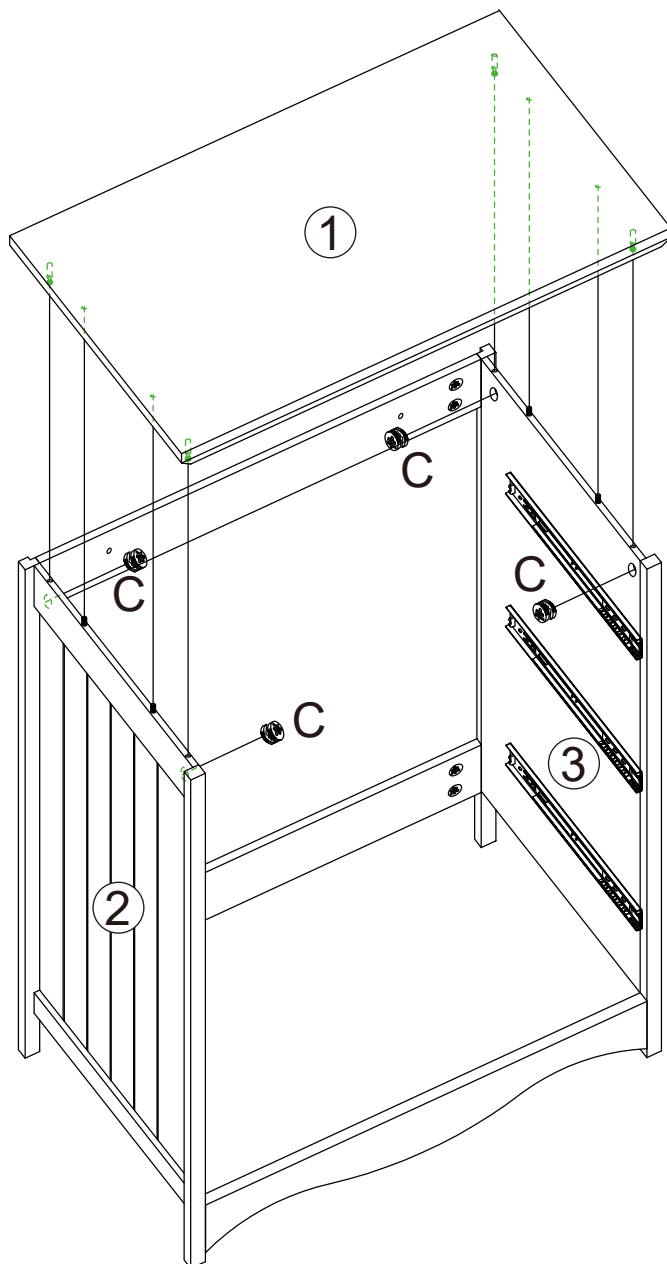
C



Cam Lock x4

STEP 8

Connect Panel #1 to the frame and fix them with Cam Lock(C)



ASSEMBLY STEPS

K

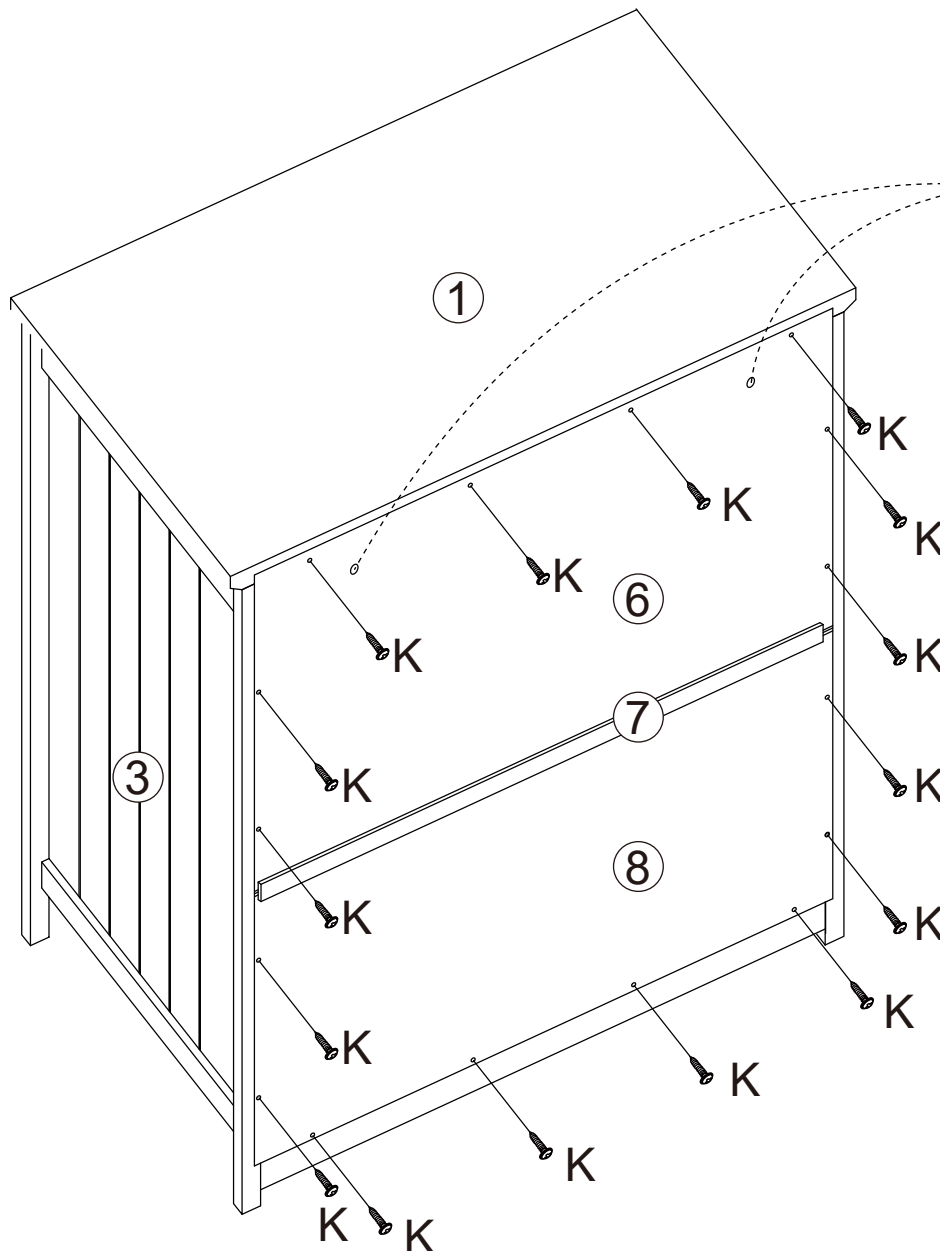


2x10mm

Screw x16

STEP 9

Fix the back panels with Screw(K)



Pre-drilled
holes for
anti-tipping
device

ASSEMBLY STEPS

I



Expansion Screw x2

J

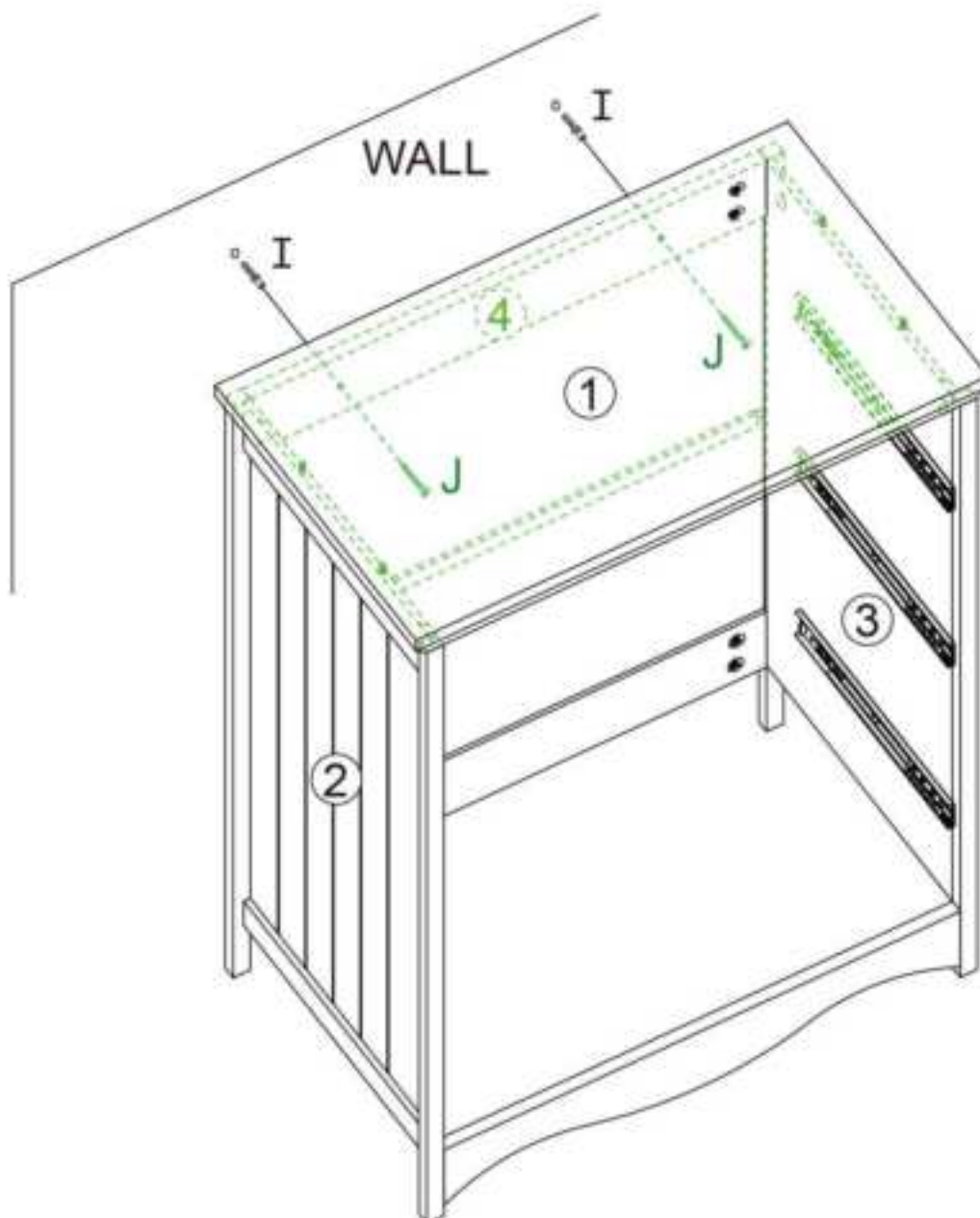


4x50mm

Screw x2

STEP 10

Drill holes in the wall, insert Expansion Screw(I), and fix the item to the wall with Screw(J) as needed



ASSEMBLY STEPS

B

Cam Bolt x18

G

Drawer Slide x6

H

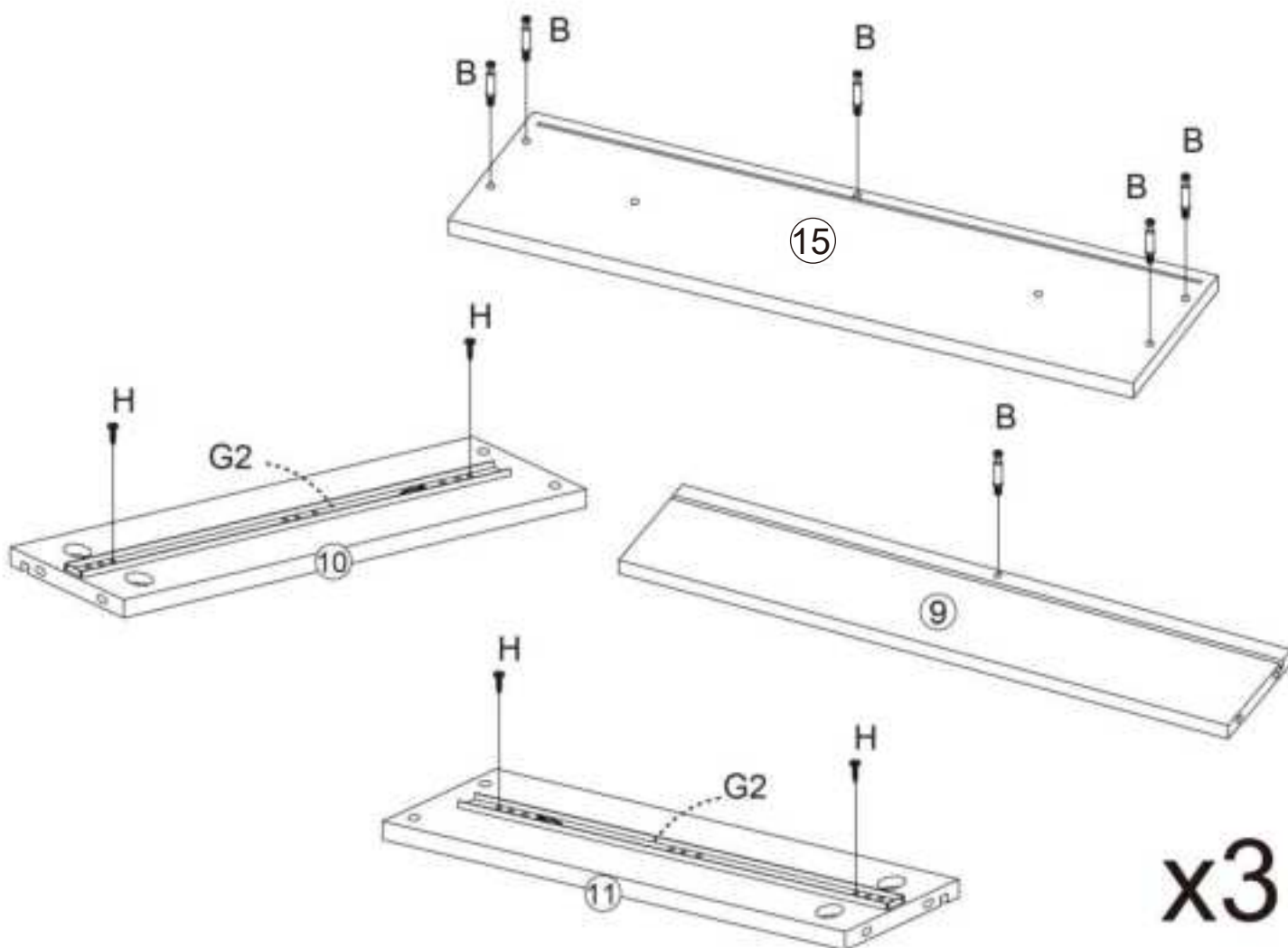
3x12mm
Screw x12

STEP 11





Time to assemble the drawer!

Screw Cam Bolt(B) to Panel #15#9

Attach Drawer Slide(G2) to Panel #10 #11 with Screw(H)

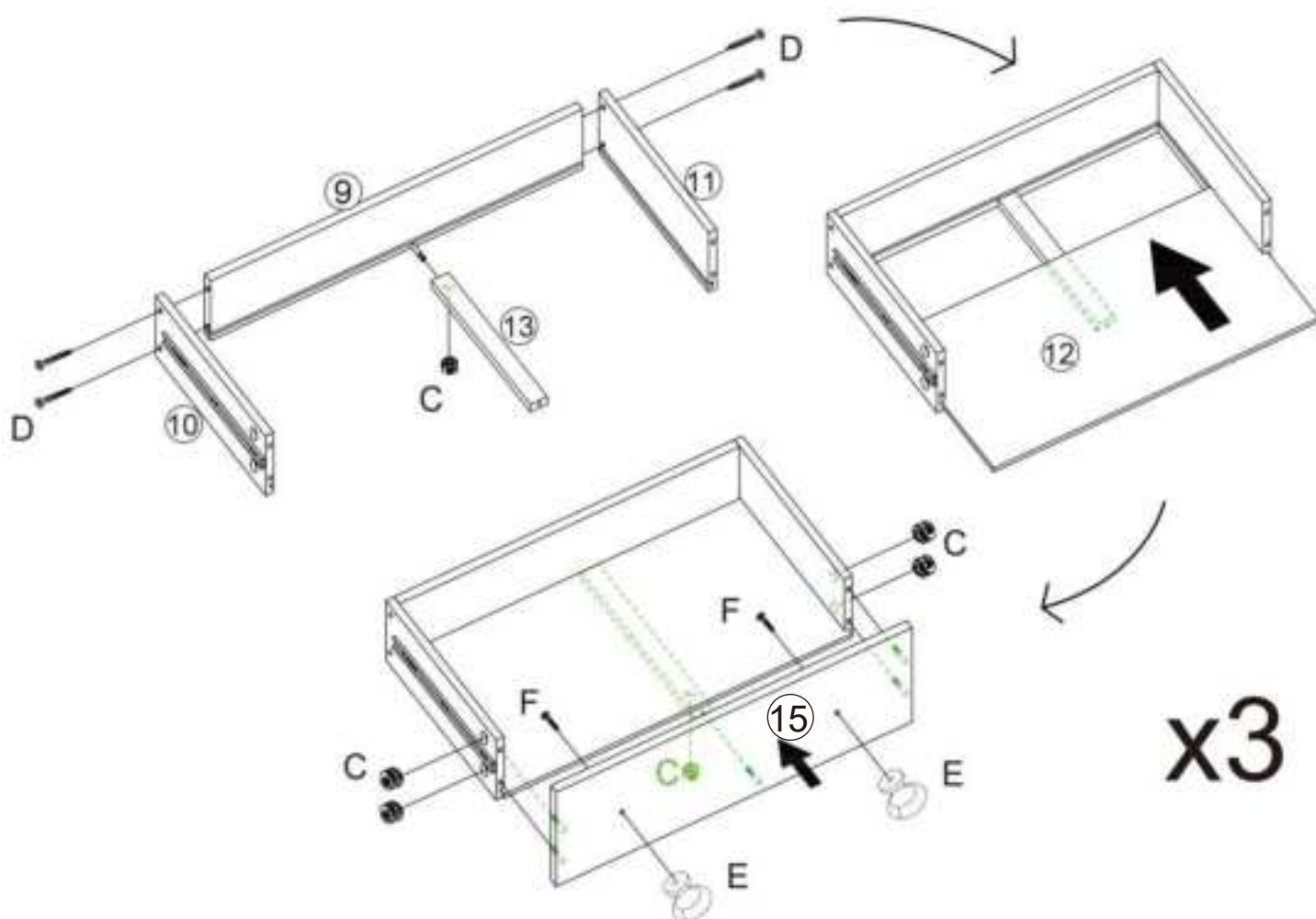


ASSEMBLY STEPS

C  Cam Lock x18	D  4x30mm Screw x12	E  Handle x6	F  3x25mm Screw x6
---	--	--	---

STEP 12

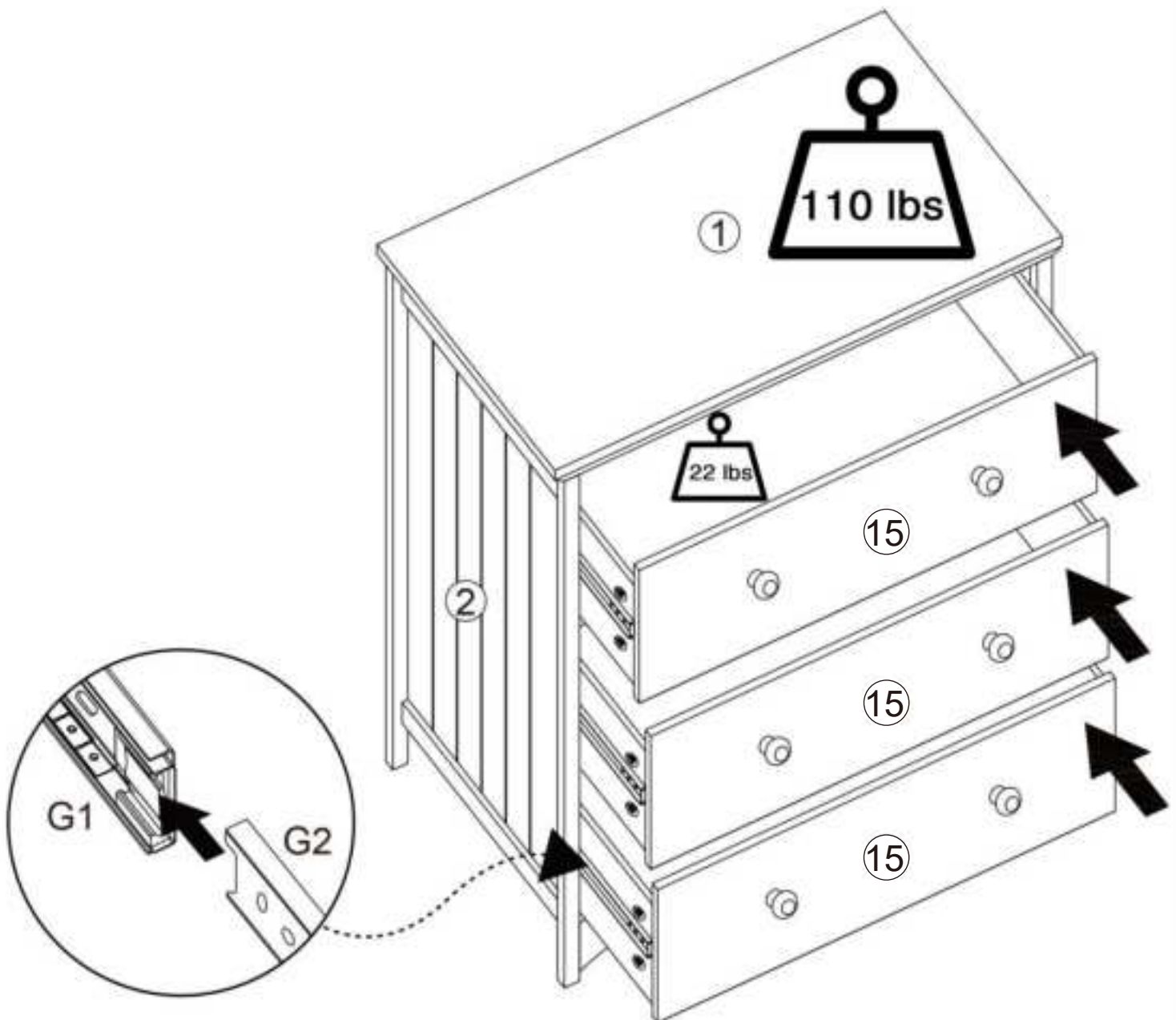
Assemble the drawer according to the schematic diagrams in turn, and fix the Handle(E) to Panel #15 with Screw(F)



ASSEMBLY STEPS

STEP 13

Pull Drawer Slide(G1) out first, and the ball along with it to the front
Keep the drawer level and insert the drawer with the slides aligned
Note! Failure to level may result in damage to the slides



1. What should I do when I received a defected item?

Please feel free to contact VINGLI customer service via the link where you purchased this item with your order ID, picture of defective part to us. We are eager to help you to make it right

2. Is it easy to put the screws to the panels?

Yes. As long as you follow the instruction and use the correct screws and put it in correct holes, it is easy to screw it into pre-drilled holes

3. Why are my drawers not aligned?

The problem lies in the assembly of the slides. Please follow the steps 1-3 and 11 on the instruction. Pay more attention to align the holes on the slides with the holes on the panel

4. How to insert the drawers?

Back to step 14, please make sure the inner slides on the drawer are attached correctly with the outer slides, then push the drawer into the cabinet. If the slides doesn't run smoothly, please check if the slides and panels are installed correctly

5. What should I do if I forget to anchor the item to the wall until I've inserted the drawers?

Never mind, just do what you did when you split the slides in two, pinch the small tongues on both sides of the drawer in the direction indicated by the arrows to take out the drawer and then anchor the item to the wall through the inside of the cabinet

6. Can I paint after it's all assembled?

Sure! But we recommend that you do it before assembly to ensure that every corner is covered

Supplementary Instructions for Safe Use

English

WARNING



Children have died from furniture tipover. To reduce the risk of furniture tipover:

- ALWAYS install tipover restraint provided.
- NEVER put a TV on this product.
- NEVER allow children to stand, climb or hang on drawers, doors, or shelves.
- NEVER open more than one drawer at a time.
- Place heaviest items in the lowest drawers.
- Do not defeat or remove the drawer interlock system.

This is a permanent label.

Do not remove!

French

ATTENTION



Des enfants sont morts du basculement des meubles. Pour réduire le risque de basculement des meubles:

- TOUJOURS installer la retenue de basculement fournie.
- NE JAMAIS mettre de téléviseur sur ce produit.
- NE JAMAIS permettre aux enfants de se tenir debout, de grimper, ou de s'accrocher à des tiroirs, des portes ou des étagères.
- N'ouvrez JAMAIS plus d'un tiroir à la fois.
- Placez les objets les plus lourds dans les tiroirs les plus bas.
- Ne désactivez pas et ne retirez pas le système de verrouillage du tiroir.

Ceci est une étiquette permanente.

Ne pas enlever!

German

WARNUNG



Kinder sind an einem Möbelkippen gestorben. So verringern Sie das Risiko eines Umkippens von Möbeln:

- Installieren Sie IMMER die mitgelieferte Kipprückhaltevorrichtung.
- Stellen Sie NIEMALS einen Fernseher an dieses Produkt.
- Lassen Sie Kinder NIEMALS an Schubladen, Türen oder Regalen stehen klettern oder hängen.
- Öffnen Sie NIEMALS mehr als eine Schublade gleichzeitig.
- Legen Sie schwerste Gegenstände in die untersten Schubladen.
- Besiegen oder entfernen Sie das Schubladenverriegelungssystem nicht.

Dies ist ein dauerhaftes Etikett.

Nicht entfernen!