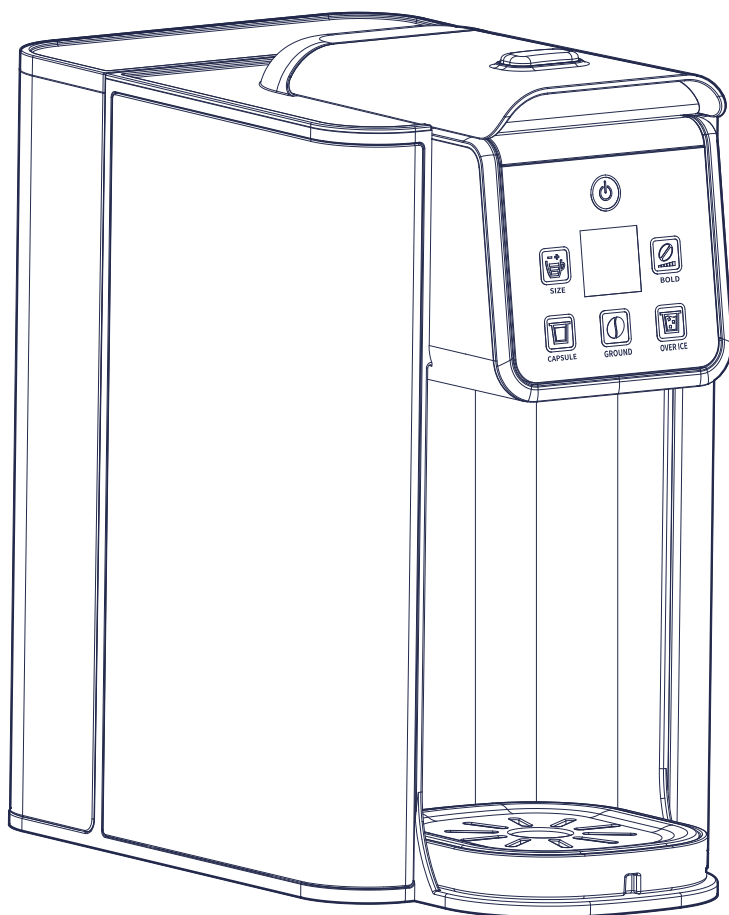


---

HIGH QUALITY

# 3 IN 1 ICED COFFEE MAKER

KC101B



USER MANUAL

---



# CONTENTS

■ Important Safeguards .....	1
■ Specification .....	2
■ Parts Identification .....	3
■ Operating Instructions.....	4
■ How to Use .....	5
■ Care and Cleaning .....	9
■ Troubleshooting.....	10
■ Warranty Registration .....	12

## Important Safeguards

# IMPORTANT SAFEGUARDS

When using this electrical appliance, basic safety precautions should always be followed, including the following:

1. Read all instructions.
2. This appliance is not intended for use by persons (including children) with reduced physical, sensory, or mental capabilities, or lack of experience and knowledge, unless they are closely supervised and instructed concerning use of the appliance by a person responsible for their safety.
3. Coffee maker must be operated on a flat surface away from the edge of counter to prevent accidental tipping.
4. Do not let cord hang over edge of table or counter or touch hot surfaces, including stove.
5. Do not place on or near a hot gas or electric burner, or in a heated oven.
6. Do not touch hot surfaces and water outlets when using the appliance.
7. Do not operate any appliance with a damaged supply cord or plug, or after the appliance malfunctions or has been dropped or damaged in any manner. Supply cord replacement and repairs must be conducted by the manufacturer, its service agent, or similarly qualified persons in order to avoid a hazard.
8. The use of accessory attachments not recommended by the appliance manufacturer may cause injuries.
9. To protect against electric shock, do not place cord, plug, or coffee maker in water or other liquid.
10. Unplug from outlet when the coffee maker is not in use and before cleaning. Allow to cool before putting on or taking off parts and before cleaning the appliance.
11. To reduce the risk of fire, do not store anything directly on top of the appliance surface when the appliance is in operation.

# SAVE THESE INSTRUCTIONS

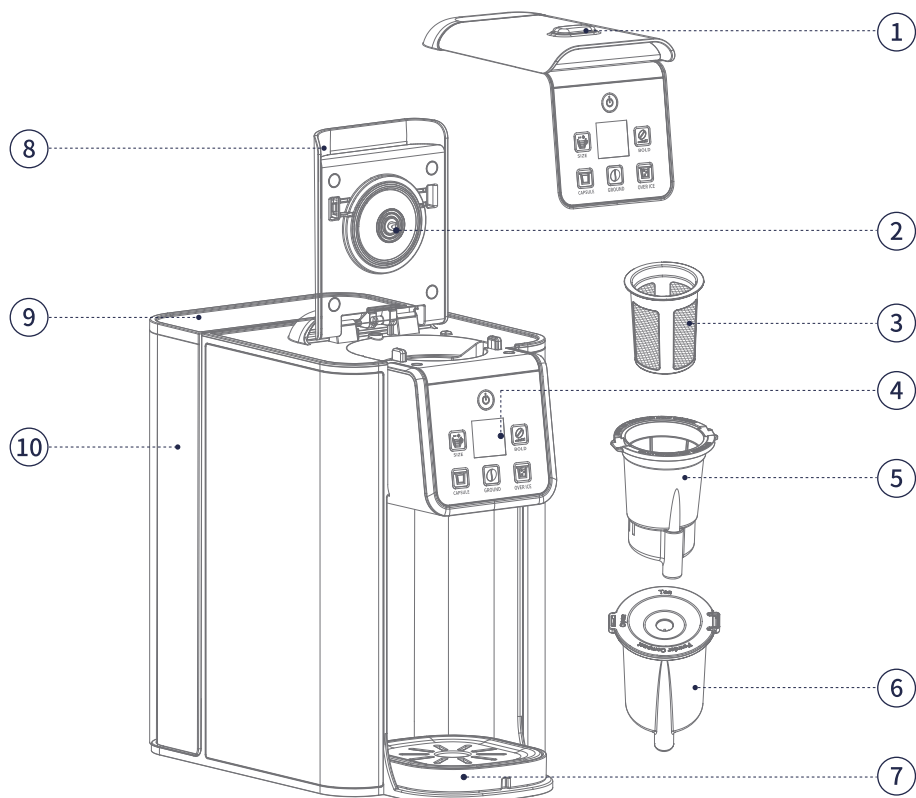
## HOUSEHOLD USE ONLY



Specification

Product Name	Low-Pressure Coffee Machine
Model Number	KC101B
Temperature Requirement	Ambient: 20° C±2° C, Water: 20-25° C
Power Supply	120V AC 50/60Hz 1150W
Dimensions	L10.63" x W6.30" x H11.14"
Water Tank Capacity	50.72 fl oz
Net Weight	4.19 lbs

## Parts Identification



① Top Cover Button

③ Reusable Pod

⑤ Capsule Holder Assembly

⑦ Drip Tray

⑨ Water Tank Cover

② Water Outlet Needle

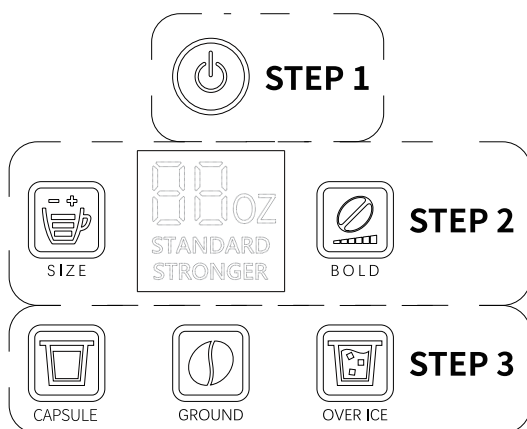
④ Touchscreen Display


⑥ Pod Holder Assembly

⑧ Top Cover


⑩ Water Tank


# Operating Instructions





 **Power Switch:** The power switch allows you to turn the appliance on or off at any time. Upon powering on the appliance, the digital display will default to showing "**8oz STANDARD**".

 **Cup Size Selection:** Choose the desired cup size from options including **6oz, 8oz, 10oz, 12oz, and 14oz**. The digital display will indicate the selected cup size.

 **Strength Selection:** There are two options for strength: "**STANDARD**" and "**STRONGER**". Press the button once to switch between the two settings. The digital display will show the selected strength.

 **Capsule Function:** This function is for dispensing coffee using capsules. Insert the capsule, then press this button. The button light will illuminate, indicating the start of the brewing process. Once finished, the light will turn off. **This function is suitable for all cup sizes (6/8/10/12/14oz).**

 **Hot Coffee Function:** This function is for dispensing coffee using coffee grounds. Add the grounds, then press this button. The button light will illuminate, indicating the start of the brewing process. Once finished, the light will turn off. **This function is suitable for all cup sizes (6/8/10/12/14oz).**

 **Iced Coffee Function:** This function is for dispensing iced coffee using coffee grounds or capsules. Insert the capsule or add coffee grounds, then press this button. The button light will illuminate, indicating the start of the brewing process. Once finished, the light will turn off. **This function is only applicable for 6/8oz. For 10/12/14oz, it initially displays as 8oz. Press the button again to start brewing.**

**NOTE:** The "OVER ICE" function uses low-temperature extraction (no physical ice-making). Coffee must be mixed with ice in a 1:1 ratio to achieve an ideal cup of iced coffee.

## How to Use

### BEFORE USING FOR THE FIRST TIME




**CAUTION:** To protect against electrical shock, do not immerse the Coffee Maker or allow the power cord to come into contact with water or other liquids.

1. Remove all packing material and labels from the inside and outside of the Coffee Maker. Place the unit on a flat, clean surface. Make sure to remove both assemblies from the inner packaging.
2. Before use, thoroughly clean both assemblies with warm soapy water.
3. To clean the inside of the unit, it is recommended to brew a full tank of water, which corresponds to brew 3 to 4 tall cups.
4. Lift the water tank up and remove it from the base of the unit.
5. Remove the lid and fill the water tank to the MAX indicator line with cold water.

**NOTE:** Never fill the water tank past the MAX indicator line and ensure water level is above the MIN indicator line.

6. Put the lid back and put the water tank back into place. Place down firmly to make sure it is securely in place.
7. Place the empty cup, mug, or tumbler in position on the drip tray cover.

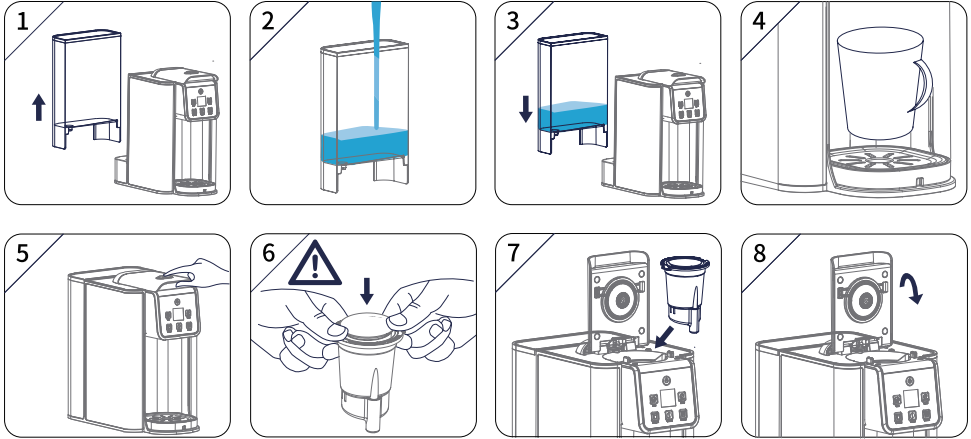
**NOTE:** It is recommended to use a cup with a height of at least 5.12 inches to prevent splashing.

8. Press the **Power button** . The product is powered on and the indicator light is on.
9. To select the brew size (6 oz., 8 oz., 10 oz., 12 oz., or 14 oz.), press the **Size button**  until the indicator light illuminates the desired size.
10. Press the **Function button** . The machine starts to work.
11. At the end of the cycle, the coffee maker enters standby mode.

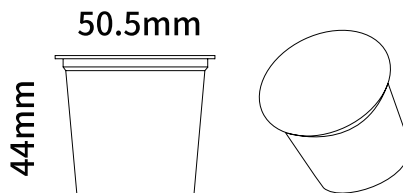
**IMPORTANT:** Repeat this process twice or more to thoroughly clean the machine before using for the first time.

12. If coffee does not dispense during the brewing cycle, **do not attempt to open the adapter compartment lid**. Internal pressure or overheating may cause hot coffee or water to spray out, leading to burns or injury. **Correct Procedure:**
  - a. **Unplug the machine immediately** to cut off power.
  - e. **Wait 10 minutes** for the machine to cool down.
  - f. Carefully open the lid and inspect the pod/adaptor for blockages or damage.

## Using the Capsule Adaptor



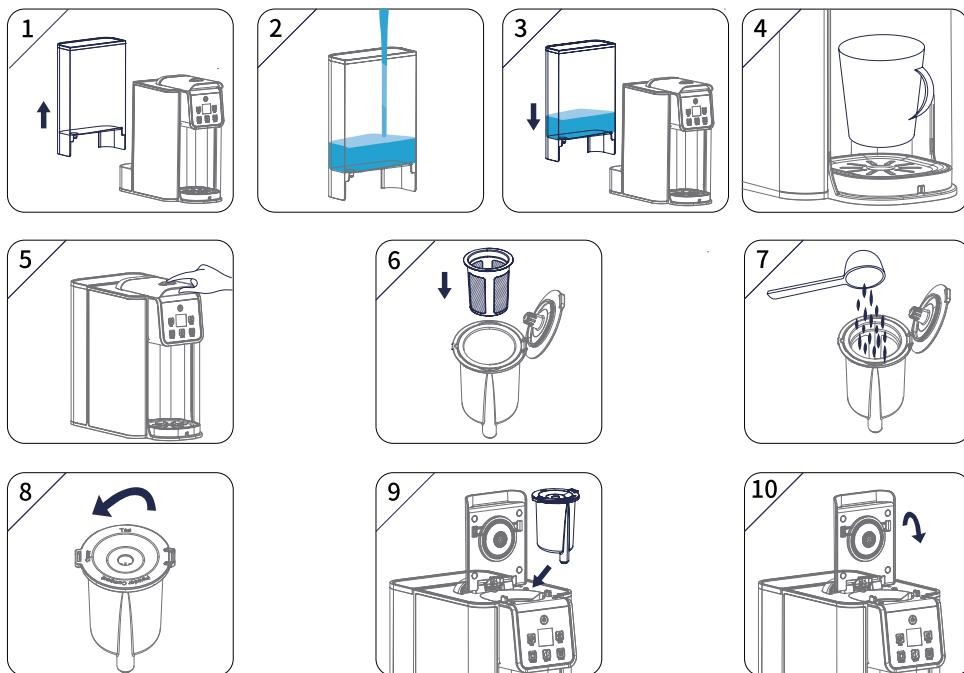
1. Lift the water tank up and remove it from the base of the unit.(Fig.1)
2. Remove the lid and fill the water tank to the MAX indicator line with cold water.  
**NOTE:** Never fill the water tank past the MAX indicator line and ensure water level is above the MIN indicator line.(Fig.2)  
**IMPORTANT:** For optimal flavor, distilled water is preferred.
3. Put the lid back and put the water tank back into place. Place down firmly to make sure it is securely in place.(Fig.3)
4. Place the empty cup, mug, or tumbler in position on the drip tray cover. (Fig.4)  
**Note:** If the cup is too tall, you can remove the drip tray for placement.
5. Press and hold the top cover button to open the top cover.(Fig.5)
6. Insert the capsule into the capsule holder assembly, ensuring the bottom of the capsule is pierced and the top is aligned with the holder.(Fig.6)  
**IMPORTANT: This coffee machine is only compatible with standard K-Cup capsules.**



7. Place the capsule holder assembly into the assembly housing, ensuring the holder is aligned with the assembly housing. (Fig.7)
8. Press the top cover down firmly to make sure the lid is locked firmly into position. (Fig.8)
9. Plug the Coffee Maker into a 120V AC electrical wall outlet.
10. Press the Power button. The product is powered on and the indicator light is on.

11. Press the SIZE button to select the desired cup size. **For making iced coffee, you can select either 6 ounces or 8 ounces(suggested to add 6/8 ounces of ice cubes).**
12. Press the BOLD button to select the desired strength.
13. Press the CAPSULE/OVER ICE button to start the brewing process.
14. To interrupt the brewing cycle at any time, press the illuminated button.
15. Allow unit to cool before removing the used capsule to discard.

## Using the Ground Coffee Adaptor



1. Lift the water tank up and remove it from the base of the unit.(Fig.1)
2. Remove the lid and fill the water tank to the MAX indicator line with cold water.  
**NOTE:** Never fill the water tank past the MAX indicator line and ensure water level is above the MIN indicator line.(Fig.2)  
**IMPORTANT:** For optimal flavor, distilled water is preferred.
3. Put the lid back and put the water tank back into place. Place down firmly to make sure it is securely in place.(Fig.3)
4. Place the empty cup, mug, or tumbler in position on the drip tray cover. (Fig.4)  
**Note:** If the cup is too tall, you can remove the drip tray for placement.
5. Press and hold the top cover button to open the top cover.(Fig.5)

6. Insert the reusable pod into the pod holder assembly.(Fig.6)
7. Place an appropriate amount of coffee grounds into the reusable pod, without compacting them. (Fig.7)  
**Note:** Grounds should not be too fine; use medium grind coffee suitable for drip brewing.
8. Close the lid of the pod holder assembly. (Fig.8)  
**Note:** If the lid does not close tightly due to excessive coffee, remove some coffee grounds before closing again.
9. Place the pod holder assembly into the assembly housing, ensuring the holder is aligned with the assembly housing. (Fig.9)
10. Press the top cover down firmly to make sure the lid is locked firmly into position. (Fig.10)
11. Plug the Coffee Maker into a 120V AC electrical wall outlet.
12. Press the Power button. The product is powered on and the indicator light is on.
13. Press the SIZE button to select the desired cup size. **For making iced coffee, you can select either 6 ounces or 8 ounces(suggested to add 6/8 ounces of ice cubes).**
14. Press the BOLD button to select the desired strength.
15. Press the GROUND/OVER ICE button to start the brewing process.
16. To interrupt the brewing cycle at any time, press the illuminated button.
17. Allow unit to cool before removing the used capsule to discard.

# Care & Cleaning

## Descaling Procedure

### When to Descale

Recommended Frequency: After every 150 brewing cycles, or sooner if you live in a hard water area (e.g., visible scale buildup).

### Step 1: Prepare the Machine

1. Empty the water tank and drip tray.
2. Pour a descaling solution (diluted 1:20 with water) into the 50oz water tank until it reaches the MAX line.

### Step 2: Start Descaling Mode

1. Press and hold the Size and Bold buttons simultaneously for 5 seconds.
2. Both buttons will blink alternately – release the buttons.

**NOTE:** The machine will automatically drain all water during this process. Place a large container (minimum 50oz capacity) under the brew spout.

### Step 3: Complete the Cycle

1. Wait until the tank is empty and the buttons stop blinking.

### Step 4: Rinse the System

1. Refill the water tank with fresh water to the MAX line.
2. Repeat Steps 2-3 twice to flush out residual solution.

## Daily Maintenance

### 1. After Each Use:

Remove used capsules/grounds.

Clean the pod holder and mesh filter immediately to prevent clogging.

Wipe the brew head and drip tray with a damp cloth.

### 2. Weekly Cleaning:

Wash removable parts (tank, pod holder) with mild soap.

### 3. Surface Care:

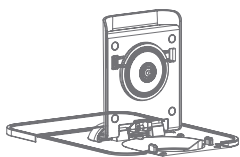
Use a dry microfiber cloth to clean the exterior. Avoid abrasive cleaners.





### Exit Needle

Remove the capsule holder assembly and detach the funnel. Insert a straightened paper clip into the exit needle to loosen any coffee grounds. Washing the funnel ensures a fresh beverage experience.



### Entrance Needle

Open the top cover and locate the entrance needle on the underside of the lid. To clean the holes in the needle, hold the top cover in the upward position and with your other hand, carefully insert a straightened paper clip into all the holes. Gently move it around to loosen any coffee grounds. Lower the top cover completely and run a cleansing brew two times. Do not insert a assembly.

## Troubleshooting

**Warning:** If the machine runs normally but water flow is abnormal, wait 10 minutes to cool before opening the lid to prevent capsule explosion.

### Light malfunction

Issue	Cause	Solution
Power, Size, and Bold lights flashing simultaneously	Top cover not secured properly	Press down the top cover to ensure it is securely in place
Power light flashing rapidly (with beeping sound)	Temperature sensor error (NTC failure)	Contact customer support via email
Size light flashing rapidly (with beeping sound)	Low water level warning	Refill the water tank and press it firmly into place
All lights flashing rapidly	Overheating protection	Allow the machine to cool for at least 5 minutes before use

Phenomenon malfunction (If accompanied by flashing lights, refer to the light malfunction.)		
Issue	Cause	Solution
Low Output & Loud Noise	Water tank not properly placed	Refill the water tank and press it firmly into place
Low or No Coffee Output	Coffee grounds too fine or packed too tightly	Use coarser coffee grounds; Add grounds up to the “MAX” line; Do not tamp or overfill
Coffee grounds in cup	Coffee grounds too fine / Grounds Spill from Adapter Edge	Use medium coffee grounds; Load coffee grounds carefully
Coffee grounds overflow/Capsule sprays grounds or explodes	Capsule: Bottom not pierced/Top not pierced	Refer to the Quick Fix Guide
	Pod holder: Outlet under holder is blocked/ Damage needle	
Insufficient water flow without capsule/ Accessories	Scaling leading to pipe blockage	Perform descaling as instructed in the manual
Water leakage	Water tank cracked/ Silicone seal failure	Contact customer support or replace the water tank

## Warranty Registration



## WARRANTY AND SERVICE

Product Name	Coffee Maker
Model	KC101B
Default Warranty Period	1 year
For your own reference, we strongly recommend that you record your order ID and date of purchase.	
Date of Purchase	
Order ID	
Provide free reparation service within warranty period.	

**Register** your product **within 3 days** after receiving the product.

We will extend warranty by an additional year.

Method 1: Please write down your **order ID and purchase date** on the form of PRODUCT WARRANTY LEAFLET and shoot a photo.

Method 2: Just send a **screenshot** of your **order details** including **order ID and purchase date**.

Method 3: **Type your order ID and send.**

Warranty Service Team: [support@shardor1.com](mailto:support@shardor1.com) (Email)

Thank you for purchasing the **Coffee Maker**



C: 100    M: 98    Y: 58    K: 18

尺寸：150x210mm

材质：128g 双面铜版纸、四色印刷

装订方法：骑马式装订