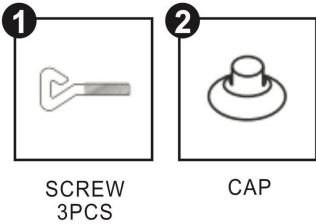


USER'S MANUAL

PRE-LIT CHRISTMAS TREE

PRE-LIT CHRISTMAS TREE INSTRUCTION MANUAL

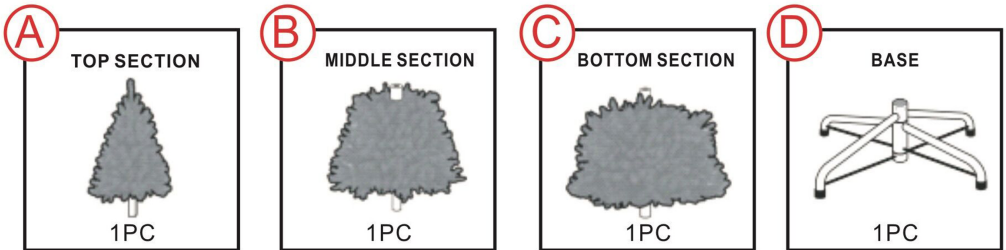
HARDWARE



WARNING: There are plastic caps on the end of each pole that are useless, please make sure to remove them before assembling.

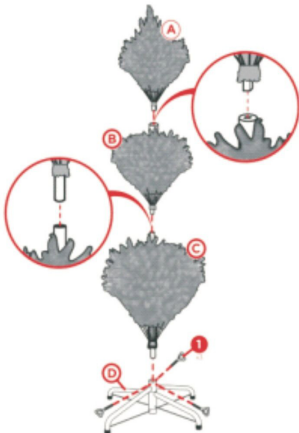
If the caps were broken or missing, please don't worry.

PARTS



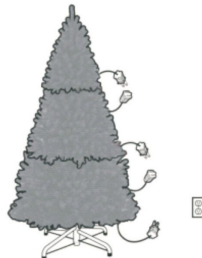
PRODUCT ASSEMBLY

1 Assemble the Christmas tree.



PRODUCT ASSEMBLY

2 Connect all the corresponding plugs. Spread out the branches and arrange them to your preference. Locate the power cord in the part C bottom, attach the part E adapter, and insert into a wall outlet to turn the lights on.



3 Decoration suggestion

Put on the wire garland and ribbon first;

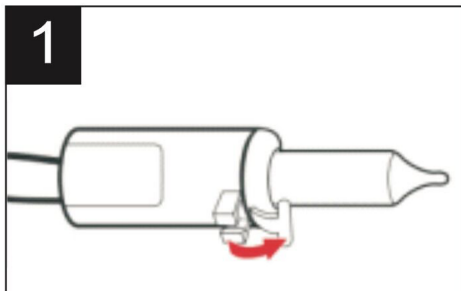
Second, place the large decorations first, and then the small decorations.

CLEANING & STORAGE

- Store this in a cool and dry place away from heat and moisture.
- Before putting this tree in storage. do the following;
 - Completely remove all decorations.
 - Clean the tree with a slightly damped cloth and let it dry naturally.
 - Raise all branches to original upright position; make sure not to damage any branches in the process.

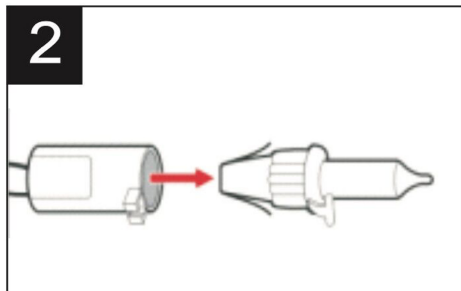
CHANGING BROKEN LIGHTS

1



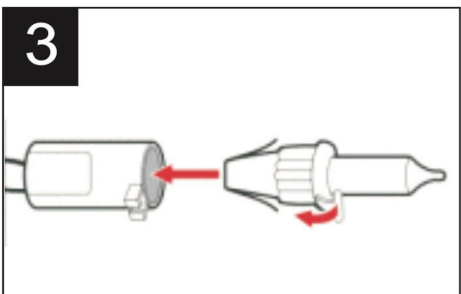
Release the latch located on the side of the bulb.

2



Carefully pull the bulb out of the socket.

3



Insert a new bulb and lock the latch.