

AT-5 Lock Instructions (all models)

For a complete guide to the LOTØShield system, visit: www.lot0shield.com/product/manual

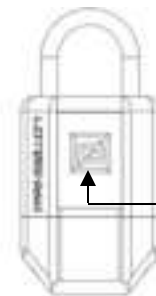
ACCESS

Note: The AT-5 lock is available exclusively in connection with the LOTØShield service. The LOTØShield service requires you to use the LOTØShield app to operate the AT-5 lock.

1. The LOTØShield app is not publicly listed in either the App Store (iOS) or Google Play (Android). Contact your company's safety department or personnel to obtain a link to download the LOTØShield app. You will be provided a username and default password at this time.
2. On your mobile device, tap the link (from step 1), and follow the prompts to download the LOTØShield app.
3. Upon launching the LOTØShield app, you will be prompted for your username and password. Enter the username and default password provided to you (from step 1, above).
4. Upon your initial login to the LOTØShield app, follow the prompts to change your password and enter personal account information.

QUICK START

1. Remove the AT-5 lock from its packaging. The lock will be delivered to you with batteries installed.
2. On your mobile device, launch the LOTØShield app, and login using your username and password (from step 4 under ACCESS).
3. In the LOTØShield app, tap the "UNLOCK LOCK" button.
4. Immediately press and hold the button on the front face of your AT-5 lock for one second. An LED behind the button will: (i) emit a blue light; (ii) then blink white; and (iii) finally emit a green light. The shackle will pop open.
5. This guide is limited to describing the operation of the AT-5 lock. For instructions pertaining to the entirety of the LOTØShield system, including the LOTØShield app, visit www.lot0shield.com/product/manual

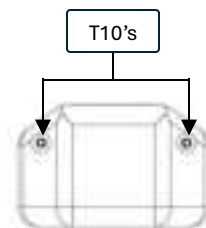


Push and hold for one second.

BATTERY REPLACEMENT

WARNING – EXPLOSION HAZARD – BATTERIES MUST ONLY BE CHANGED IN AN AREA FREE OF IGNITABLE CONCENTRATIONS

1. Locate bolts on bottom surface of AT-5 lock.
2. Using a device with a Torx T10 driver head, loosen both bolts, until the lower housing separates.
3. Locate the battery assembly. These batteries are not rechargeable. Do not attempt to recharge the batteries. Remove the battery assembly.
4. Apply a light coating of dielectric grease to the exposed portion of a fresh assembly's terminals, and to the holder's contacts. Install fresh battery assembly.
5. Re-attach lower housing.



T10's



Battery Assembly

Note: Under ordinary use, the batteries are estimated to have a lifespan of approximately one year. You may order new battery assemblies at: www.lot0shield.com/order/battery

LED INDICATORS

WHITE (BLINKING)	BLUE	GREEN	RED
Advertising for pairing via Bluetooth	Lock is initializing	Active Bluetooth connection	Battery is depleted or some other system issue

Changes or modifications to the AT-5 Lock that are not expressly approved by Amarillo Technologies could void the user's authority to operate the AT-5 Lock.

This equipment has been tested and found to comply with the limits for a Class A digital device, pursuant to part 15 of the FCC Rules. These limits are designed to provide reasonable protection against harmful interference when the equipment is operated in a commercial environment. This equipment generates, uses, and can radiate radio frequency energy and, if not installed and used in accordance with the instruction manual, may cause harmful interference to radio communications. Operation of this equipment in a residential area is likely to cause harmful interference in which case the user will be required to correct the interference at his own expense.

FCC ID: 2BOPUAT5