

# MK321-Pro User Manual

## I. Product picture:



## II. Description:

Mk321-pro is a Bluetooth+2.4G+USB three-mode mini keyboard, can be customized function, through the supporting software defined keys for keyboard, mouse, string printing, multimedia and macro definition function. Function description is as follows:

1. **Keyboard function:** It can be set to any key value or key combination (including F13 to F24, etc.), such as the key value A or CTRL+A function.
2. **Mouse function:** It can be set to the left, middle, right, forward, and backward key functions of the mouse, and the movement of the X and Y axes and the up and down scrolling functions of the wheel can also be set.
3. **String printing:** can be set to quickly enter strings (38 characters), such as "Hello how are you today"
4. **Multimedia functions:** support multimedia functions, such as previous song, next song, volume up, volume down, etc.
5. **Macro definition function:** you can define the combination of keyboard and mouse actions, for example, set Ctrl+P to delay 100ms and press Enter to realize the function of automatic printing

## III. Parameter:

- |  |  |
|--|--|
| 1. Product name: Mini keyboard                         | 7. Working current: < 2mA                  |
| 2. Product mode: MK321-Pro                             | 8. Shaft: Blue switch                      |
| 3. Bluetooth communication distance: $\geq 10\text{m}$ | 9. Switch life: More than 50 million times |
| 4. Bluetooth version: Bluetooth 5.1                    | 10. Connection method: Bluetooth、2.4G、USB  |
| 5. 2.4G communication distance: $\geq 10\text{m}$      | 11. Specification: 75*37*28mm              |
| 6. Power supply: lithium battery                       | 12. Weight: 35g                            |

## IV. Pair:

Mode	LED	Pairing mode	Reconnect	Low battery
Bluetooth	Red	Slow blink	Fast blink	Blink every 3 seconds
2.4G	Green	Slow blink	Fast blink	Blink every 3 seconds
USB	Blue	--	--	--
Click connect key, mode switch				
Click connect key 3 seconds, enter pair mode				

**Mode switch:** Click the Connect key on the device to switch work mode(bluetooth\2.4G\USB).

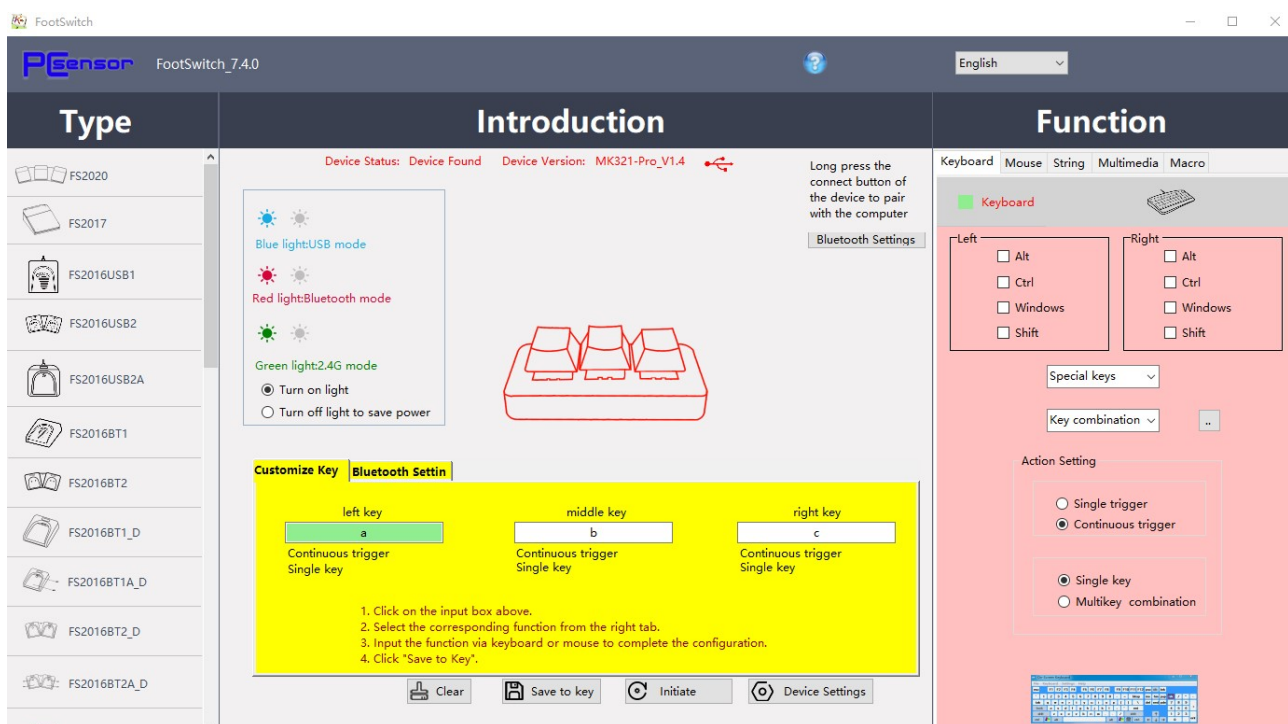
**Bluetooth mode:** Long press the connect key for three seconds to enter the pairing mode ( red led slow blink ) , you can search for the device named "MK321-Pro" by using the Bluetooth function such as computer or mobile phone, and click the name and retrograde connection. After successful connection, the device's red light will be on for 2 seconds and then off.

**2.4G mode:** Long press the connect key for three seconds to enter the pairing mode ( green led slow blink ) , At this time, insert the receiver into the computer, the device and the receiver will automatically pair, after successful pairing, the green light of the device will be on for 2 seconds and then go out.

**USB mode:** In USB mode, the device can be connected to the computer through USB cable, which can be used as a wired foot pedal, and the function can be set by software.

## V. software:

Software download link: <http://software.pcsensor.com>,Download and install the latest version of Footswitch software



软件主界面

When you want to change the function of the key, you can use the FootSwitch software to change the function of the key. The steps are as follows:

1. Connect the device to your computer via USB Cable.
2. Click connect key on the device to switch to USB mode
3. Run Footswitch software.
4. Select or enter the key value that you want to set.
5. Click "Save to key" to complete the setting.

**Change Bluetooth Name:** You can modify the name of Bluetooth in the Bluetooth Settings. Click Bluetooth Settings, enter the characters to be added in the input box of the device name, and click the Save to key button to complete the modification of the Bluetooth name,as shown in the picture below:

The screenshot shows a software interface for Bluetooth settings. At the top, there are two tabs: 'Customize Key' and 'Bluetooth Setting'. The 'Bluetooth Setting' tab is selected and highlighted with a red box, with a red number '1' next to it. Below the tabs, the main area has a light green background. On the left, there is a label 'Bluetooth Name' above the text 'MK321-Pro'. To the right of this text is an input box containing '-1', which is highlighted with a red box and a red number '2'. Below the input box, there is a note: 'Bluetooth name is model and custom name.' On the right side of the green area, there is a section titled 'Dormancy is set' with a label 'sleep time (5min~250min)' and a numeric input field showing the value '5'. At the bottom of the interface, there is a row of four buttons: 'Clear', 'Save to key', 'Initiate', and 'Device Settings'. The 'Save to key' button is highlighted with a red box and a red number '3'.

**Sleep time:** Click Bluetooth Settings, and you can set the sleep time in the input box of sleep time. The sleep time indicates how long the device will enter the sleep state after no action (without pressing the button).

## **FCC Statement**

This device complies with part 15 of the FCC rules. Operation is subject to the following two conditions: (1) this device may not cause harmful interference, and (2) this device must accept any interference received, including interference that may cause undesired operation.

Changes or modifications not expressly approved by the party responsible for compliance could void the user's authority to operate the equipment.

NOTE: This equipment has been tested and found to comply with the limits for a Class B digital device, pursuant to part 15 of the FCC Rules. These limits are designed to provide reasonable protection against harmful interference in a residential installation. This equipment generates uses and can radiate radio frequency energy and, if not installed and used in accordance with the instructions, may cause harmful interference to radio communications. However, there is no guarantee that interference will not occur in a particular installation. If this equipment does cause harmful interference to radio or television reception, which can be determined by turning the equipment off and on, the user is encouraged to try to correct the interference by one or more of the following measures:

- Reorient or relocate the receiving antenna.
- Increase the separation between the equipment and receiver.
- Connect the equipment into an outlet on a circuit different from that to which the receiver is connected.
- Consult the dealer or an experienced radio/TV technician for help.

The device has been evaluated to meet general RF exposure requirement. The device can be used in portable exposure condition without restriction.