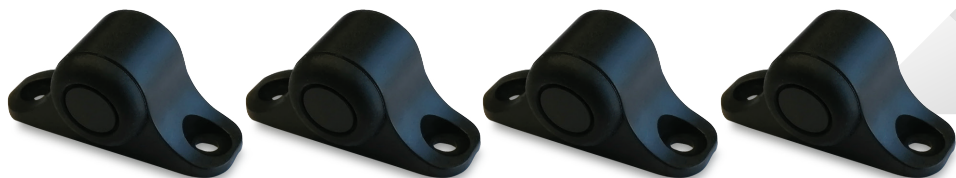


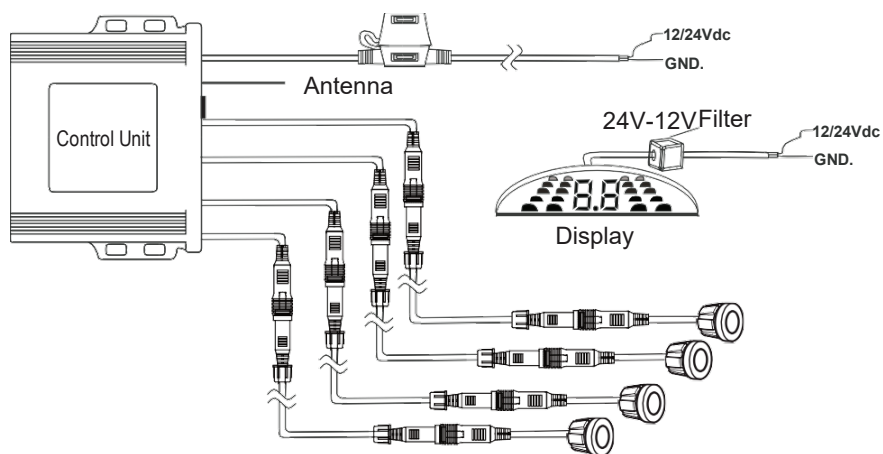
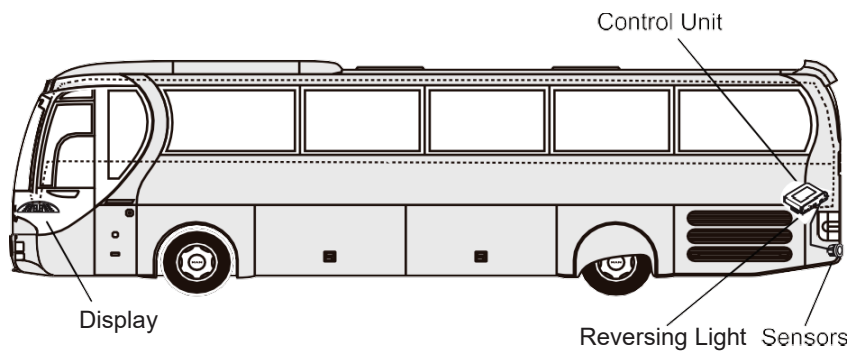
axis
JAPAN

日本の品質
— JAPAN QUALITY —

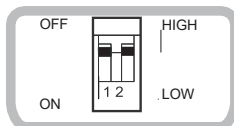


APS401W
12/24V Wireless Parking Sensor System

WIRING DIAGRAM



The two outer sensors start detecting at Zone B.



Switch 1: OFF- Standard
ON- Display distance less 20cm than actual.
Switch 2: Sensor sensitivity

TECHNICAL SPECIFICATION

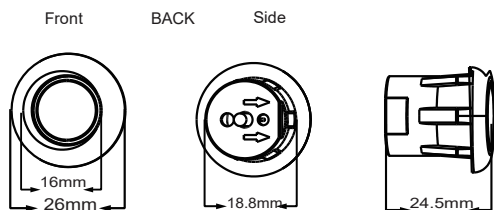
DESCRIPTION	MIN	SPEC	MAX
Power voltage (V DC)	10		35
Operating current (mA)			150
Operating temperature °C	-20		80
Operating frequency (KHz)	39.3		40.7
Horizontal detection angle		120°	
Vertical detection angle		60°	
Distance detection accuracy (cm)		10	
Detection range (m)	0.05		2.5
Buzzer sound volume (dB)	75		105

DETECTION ZONES

DISPLAY	SOUND
ZONE A: 1.5 - 2.5m	ZONE A: 1.5 - 2.5m
Number Only	None
ZONE B: 1 - 1.5m	ZONE B: 1.2 - 1.5m
Green	2 beeps per second
ZONE C: 0.5 - 1m	ZONE C: 0.9 - 1.2m
Amber	3 beeps per second
ZONE D: 0 - 0.5m	ZONE D: 0.6 - 0.9m
Red	4 beeps per second
	ZONE E: 0.3 - 0.6m
	5 beeps per second
	ZONE F: 0 - 0.3m
	Constant tone

SENSOR

18.8mm Rubber Angled Sensor



UNDER MOUNTS

Under Mount Brackets and Spacers



DISPLAY



99 x 20H x 28Dmm

FEATURES

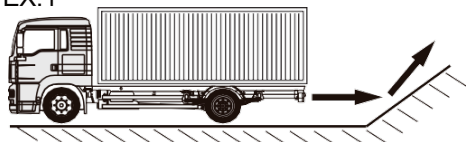
1. Wireless range up to 30m.
2. Towbar / Spare Wheel detection zone.
3. Suitable for flush mounting into metal bumpers and under body/tray mounting.
4. System Self-Checking Function - On start-up the system will beep twice; If there is any faulty sensor, the system will beep once.
5. IP69K Control Box & IP68 Sensors and Connectors.
6. E-Mark certified.

TROUBLE-SHOOTING GUIDE

PROBLEM	CAUSE	SOLUTION
The system fails to start when the reverse gear is engaged	Wrong connection of power lead	Check the power lead
	Wrong jack connection	Check the connectors
The system always detects the same distance	Sensor detects the ground	Check and adjust the vertical sensor angle
The system fails to detect the obstacles	Wrong sensors connection	Check and reset the system
False alarm	Sensor detects the ground	Check and adjust the vertical sensor angle

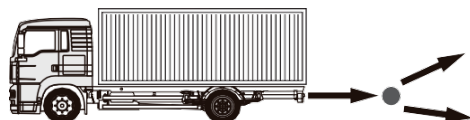
SPECIAL NOTES

EX.1



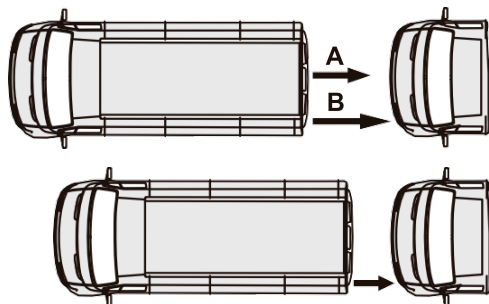
When the car approaches a smooth slope, the slope may not be detected.

EX.2



The sensors may not detect a small or smooth round pole.

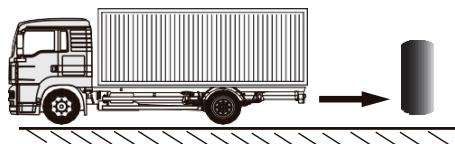
EX.3



Point A will be detected prior to point B, as it comes closer.

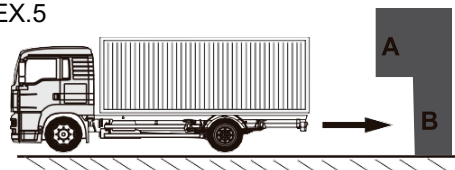
However, point A may fall into the sensors' blind zone, and point B could be misjudged as the closest point.

EX.4



The sensors may not detect any sponge-like material obstacle as the ultrasonic wave was absorbed.

EX.5



Complex situation: point A may not be detected.

SPECIFICATIONS

GENERAL

- Detection Range:	0.05 ~ 2.5m
- Rated Voltage:	12/24V DC
- Operating Range:	9-32V DC
- Operating Current:	150mA @ 12V

LED DISPLAY

- Proximity Alert:	Visual Direction & Indicators
- Audiable Buzzer:	Yes
- Mute Function:	Yes
- Buzzer Cable Length:	1.5m
- Dimensions:	99W x 20H x 28Dmm

CONTROL BOX

- Water Resistance	IP69K
- Wireless Range:	Wireless Range: Up to 30m
- Ignore Function:	Towbar / Spare Wheel
- Power Leads:	1.4m

SENSORS

- Sensor Type:	Angled Rubber
- Sensor Size:	18.8mm
- Sensor Dimensions:	26W x 26H x 24.5Dmm
- Sensor Cable Length:	2.5m
- Sensor Installation:	Under Mount or In-Bumper Mount
- Detecting Distance:	0.05 - 2.5m
- Ultrasonic Frequency:	40KHz
- Working Temperature:	-20° to +80°C
- Water Resistance	IP68
- Under Mount Dimensions:	65W x 30H x 24.5Dmm

INCLUDES

Control Box
4 x Sensors
4 x Bracket with Pads
4 x 2.5 Sensor Cable
Wireless Display
Drill Bit

WARRANTY

Congratulations on your purchase of a quality **axis** Mobile Safety System! You're joining thousands of satisfied customers who enjoy & experience the benefits of the products we distribute. In the unlikely event that some technical difficulty arises with your purchase, be assured that we are most anxious to see that the problem is quickly rectified to your satisfaction. Please familiarise yourself with the following simple conditions of our warranty. This warranty covers faults through component failure or failure of the product to operate in accordance with published specifications. Product failure as a result of unreasonable environmental conditions, accident, misuse, improper installation, unauthorised repair, vehicle electrical or wiring faults or neglect etc, will not be covered by this warranty. Removal and installation costs, if any, would be paid by the owner as well as any freight or postage costs of transporting the product to AudioXtra. AudioXtra shall not be liable or responsible for any loss of use of this product or any form of consequential loss.

CONSUMER WARRANTY

This product is warranted by AudioXtra Pty Ltd to be free from defects in materials and workmanship under **NORMAL USE** for a period of **TWENTY FOUR MONTHS** from the date of purchase.

WITHIN 30 DAYS OF PURCHASE DATE:

Please return the unit for replacement to our National Service Centre or the Retailer from where you made the purchase. All accessories must be included. Proof of purchase date **must** accompany the products.

AFTER 30 DAYS OF PURCHASE DATE:

Warranty repair and service is carried out by our National Service Centre. Repair and service will be carried out at no cost to the owner if proof of ownership and the date of purchase can be verified to the satisfaction of the authorised centre concerned with this repair. This proof should take the form of either:

- a) The warranty card accompanying this product, stamped and dated by the dealer.
- b) A Tax Invoice or Receipt showing full details of original vendor, purchaser, model number and serial number.

COMMERCIAL WARRANTY

A product used in or associated with a commercial application will carry a limited SIX MONTH warranty. An abnormal commercial application is one where usage, dust, vibration, heat/cold and other environmental conditions exist at an extreme level.

Our goods come with guarantees that cannot be excluded under the Australian Consumer Law. You are entitled to a replacement or refund for a major failure and for compensation for any other reasonably foreseeable loss or damage. You are also entitled to have the goods repaired or replaced if the goods fail to be of acceptable quality and the failure does not amount to a major failure.

Please complete details below in the event of warranty service being required.

Purchaser's Name: _____

Purchaser's Address: _____

Model Number: APS401W **Serial Number:** _____

Dealer Name: _____ **Date of Purchase:** / /

Dealer Address: _____

Invoice/Sales Docket no: _____

General Hints: To expedite service and prompt return of the equipment, please:

- a) Clearly describe the fault in detail
- b) Safely and securely pack the unit for transport
- c) Include your return address
- d) Provide proof of purchase date as outlined above

National Service Centre:

10 STODDART ROAD, PROSPECT, SYDNEY NSW 2148 Australia

Telephone: (02) 8841 9000 Fax: (02) 9636 1204

email: services@audioxtra.com.au

audioXtra PTY LTD

audioxtra.com.au