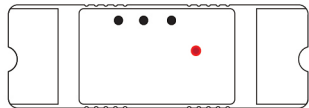


# Three Mode WiFi Switch

Model: TYWB 2CH 7-32V RF



## Parameters:

Input voltage: DC/AC 7V~32V  
 Max.Current:2200W/10A  
 Wireless:Wi-Fi 2.4ghz b/g/n+Bluetooth  
 Radio Frequency:433Mhz  
 Working temperature: -20°C~70°C  
 Size: 116\*38\*25mm

## Checklist before using the device

- Your smart phone or tablet has connected to a 2.4g WiFi with internet.
- You need to enable Bluetooth of the phone.
- You have the correct WiFi PWD.
- You smart phone or tablet must have access to APP store,Google play.
- Your router is MAC-open.

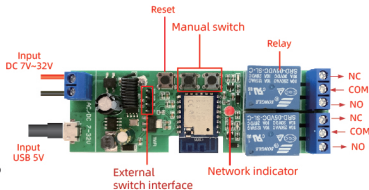
## User Guide

- 1 You can download the App by searching "Tuya Smart" in mobile app stores or scanning the following QR code



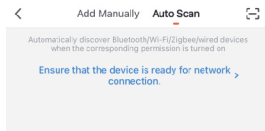
- 2 Register an Tuya Smart account.
- 3 If you have Tuya Smart account. just login.
- 4 Power on.

ON/OFF operating principle:  
 The connected appliances work/stop through live wire power on/off.



## Add devices

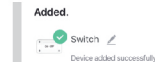
- 1 Reset the device first:  
 if the network indicator blinking fast (0.5S/time) , skip the reset step.  
 ① Power on  
 ② hold down the Reset button for 5 seconds. until network indicator(red light) blinking fast(0.5s/time).
- 2 Clicking "+" in the top right corner on tuya smart app. then click "Auto Scan" ,wait a few seconds, After the devices are found,Click "Next"



- 3 Select a 2.4GHz Wi-Fi network and enter your password.

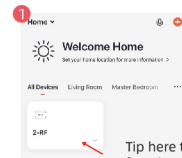


- 4 Name your device.

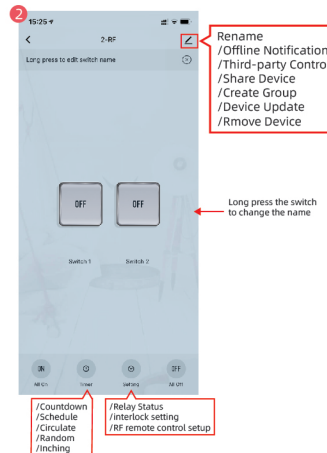


- 5 When the network indicator is on,the device is online.
- 6 When the network is disconnected, the switch will automatically switch to the Bluetooth control of the phone.
- 7 Click the on/off buttons on the APP can control device,Manual control switch also can be display real-time on the APP.

## APP Function



Tip here to enter the full function operation interface.



## Remote control matches the code

Matching:

- 1 Figure 2 interface, click setting> RF remote control setup>Add.
- 2 When the prompt interface pops up,then long press the remote control button you want to match
- 3 loosen the remote control buttons,matching success.
- 4 Added successfully, assign the remote control buttons to the switches that need to be controlled

\*match other buttons, repeat steps 1 to 4.  
 Delete:

- 1 Figure 2 interface, click setting> RF remote control setup, Swipe the remote control to be deleted to the left, and click the delete on the right.

## TROUBLESHOOTING

Solutions for the failure of product matching and offline:

Enter the homepage of App,click the icon in the lower right corner of the interface to enter.

