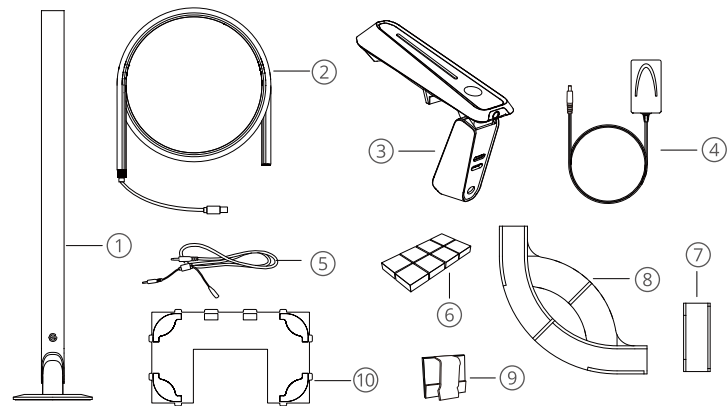
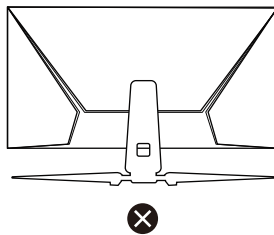
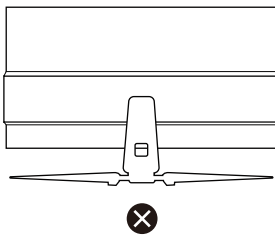
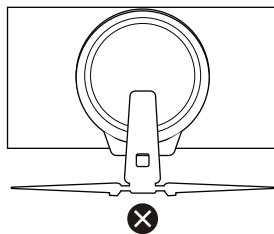
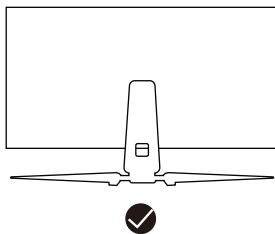


## ⚠ Caution

- This product is suitable for 24-29 inch monitors.
- Keep the back panel of the monitor dry and clean before installing.
- The included strip light is only for monitors with a smooth back panel. Monitors with the following three back panel types are not supported.



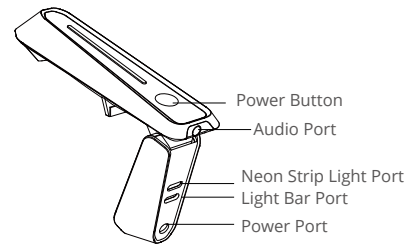
### In the Box

①	Light Bars x2
②	Neon Strip Light
③	Gaming Camera
④	Power Adapter
⑤	Headphone Linking Cable
⑥	Foam Stickers
⑦	Straight Mounting Clips x5
⑧	Corner Mounting Clips x4
⑨	Cable Clip x2
⑩	Positioning Card x2

### Before Installation

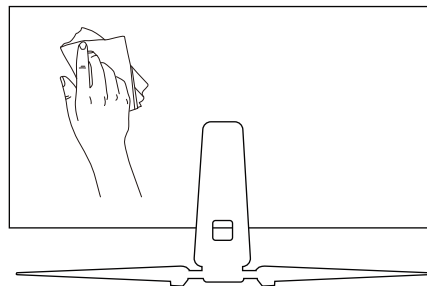
#### Step 1

- Insert the strip light, light bars, and the DC power adapter cord into the corresponding ports of the camera as shown in the image.
- Plug the kit into power to check that all parts are functioning properly, then unplug the kit from power and disconnect its parts from the camera.



#### Step 2

Wipe the back panel of the monitor to make sure its surface is dry and clean.



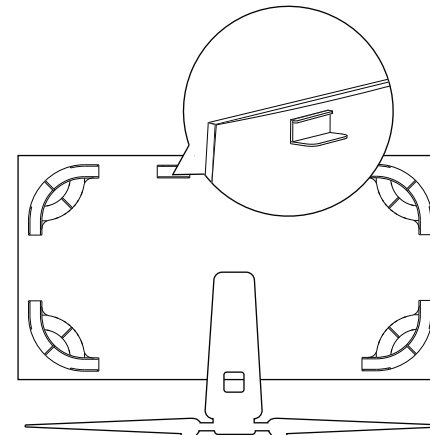
### Installation Steps

#### Step 1

- Select a positioning card based on the size of the monitor.
- Unfold the card, and align it with the back panel to identify the correct attachment positions for the mounting clips.
- Slowly remove the card's adhesive film and stick it on the back panel.

#### Step 2

Install the mounting clips as shown in the positioning card. Press each clip for 10 seconds when installing to ensure they are fully attached.

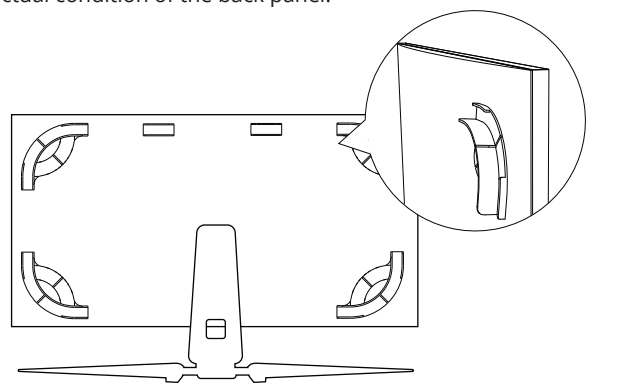


Govee Home App

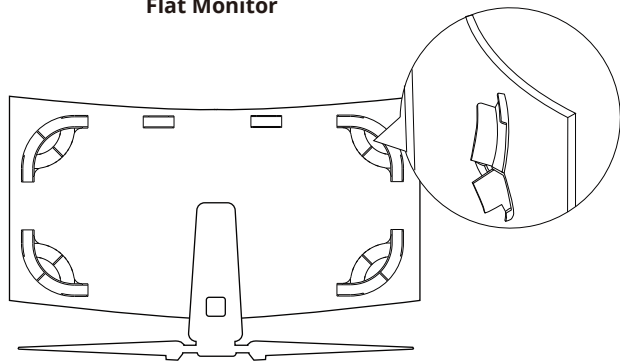
For FAQs and more information,  
please visit: [www.govee.com](http://www.govee.com)

### Tips:

- For curved monitors, the corner mounting clips may need to be flexed when pressed onto the back panel to ensure their orientations are correct.
- Choose to install the remaining straight mounting clips based on the actual condition of the back panel.



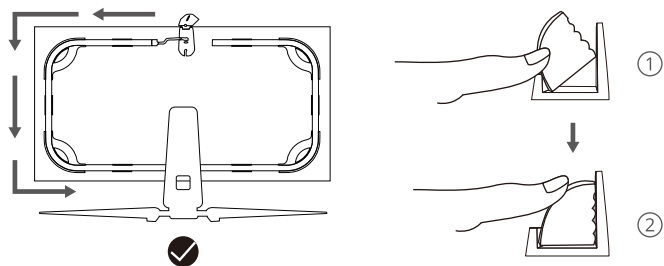
Flat Monitor



Curved Monitor

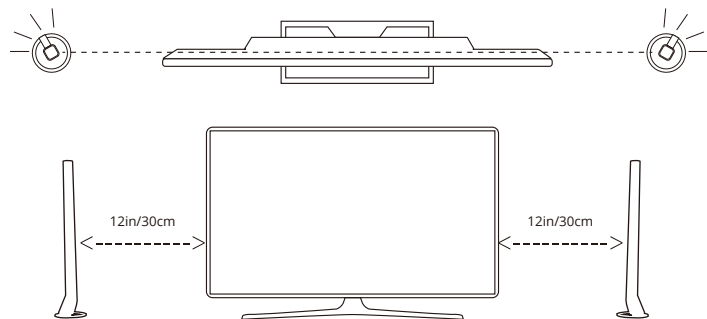
### Step 3

- Install the strip light on the mounting clips **counterclockwise**.
- After finishing the installation, press lightly on the strip light to make sure it is fastened into all the clips.



### Step 4

Place each light bar about **12 inches (30cm)** either side of the monitor, and angle each bar's lighting-emitting surfaces outward to the wall behind to achieve maximized lighting effects.

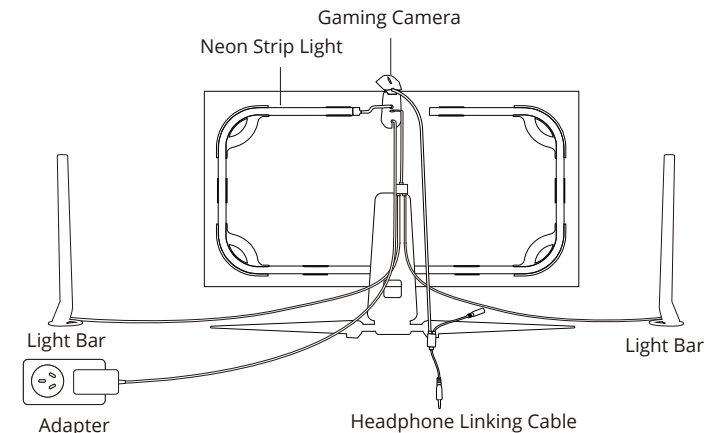
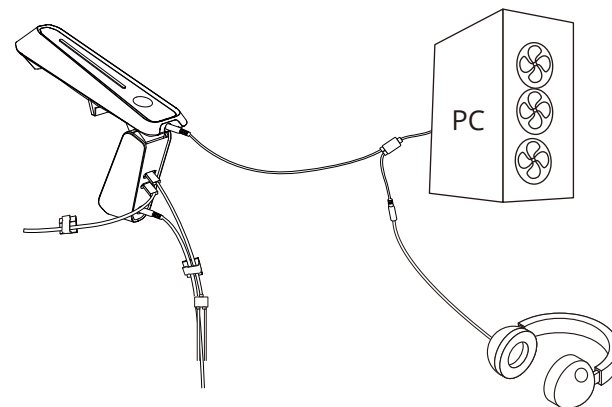


### Step 5

- Position the camera at the top-center of the monitor looking down.
- Insert the strip light, light bars, and DC power adapter cord into the corresponding ports of the camera.
- Use the cable clip to fasten the the light bars' and power adapter cords for better cable management.
- Finally, plug the kit into power and enjoy!

### Caution:

- Make sure the **longest part** of this Headphone Linking Cable is plugged into the camera, otherwise the linking cable may pull on the camera and affect its color tracking.
- As the monitors differ in thickness, you can choose to remove the rubber pad on the camera and use the included adhesive to mount the camera on the monitor.
- The connection standards of the headphone linking cable do vary by region.



## Quick Start Guide

Model: H604A  
Govee DreamView G1 Pro Gaming Light