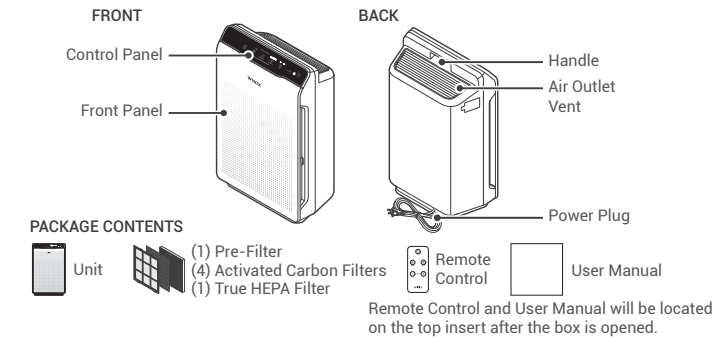
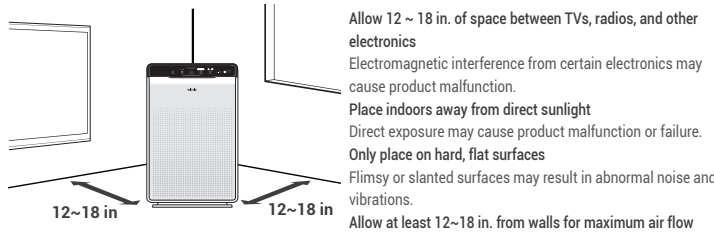


MODEL PART DIAGRAM

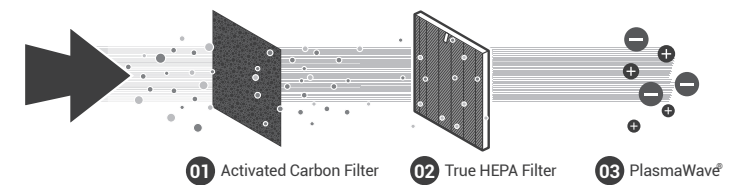


WHERE TO USE



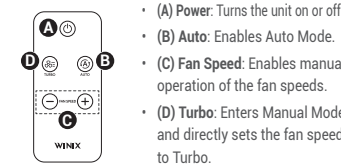
3-STAGE AIR PURIFICATION

Air Purification means it removes inanimate particles



REMOTE CONTROL

Operates in a 20 foot radius:

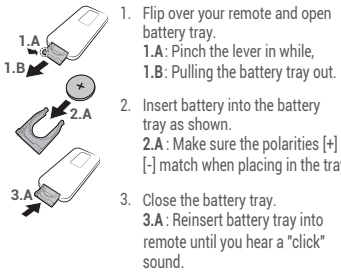


- (A) Power: Turns the unit on or off.
- (B) Auto: Enables Auto Mode.
- (C) Fan Speed: Enables manual operation of the fan speeds.
- (D) Turbo: Enters Manual Mode and directly sets the fan speed to Turbo.

WARNING

- Incorrect battery usage may cause battery fluid leakage and/or damage.
- When not using remote for extended periods of time, remove the battery.
- Avoid dropping or damaging the remote.
- WARNING: Chemical Burn Hazard. Keep batteries away from children.
- This product contains a lithium button/coin cell battery. If a new or used lithium button/coin cell battery is swallowed or enters the body, it can cause severe internal burns and can lead to death in as little as 2 hours.
- Always completely secure the battery compartment.
- If the battery compartment does not close securely, stop using the product, remove the batteries, and keep it away from children.
- If you think batteries might have been swallowed or placed inside any part of the body, seek immediate medical attention.
- The batteries should be disposed of properly, including keeping them away from children. Even used batteries may cause injury.

How to replace your remote's battery:



※ Keep all used batteries (CR2025) in safe place.

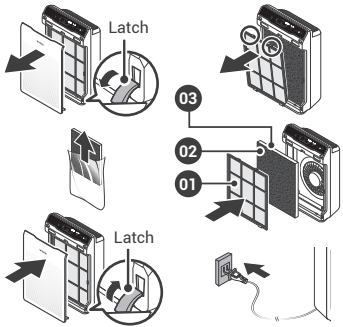
INITIAL OPERATION

1. Remove the front panel by grasping its upper edge and gently pulling forward.
2. Remove the Pre-Filter, then the plastic bag of filters behind it.
3. Remove filters from protective plastic bag.
4. Install the filters until they fit securely in place.

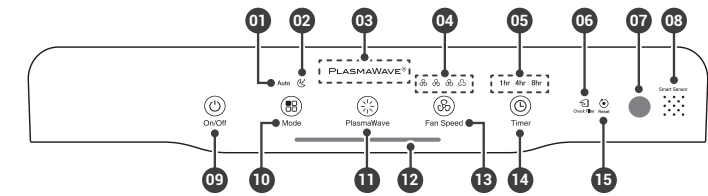
03. True HEPA Filter (back)

02. Activated Carbon Filter (middle)

01. Pre-Filter (front)
5. After filters are installed, close the front panel.
6. Insert the power cord into an electrical outlet.



CONTROL PANEL



01. Auto Indicator

Indicates whether Auto Mode is enabled or disabled.
02. Sleep Indicator

Indicates whether Sleep Mode is enabled or disabled.
03. PlasmaWave® Indicator

Indicates whether PlasmaWave® is enabled or disabled.
04. Fan Speed Indicator

Indicates the current fan speed.
05. Timer Indicator

If timer has been set, the LED light indicates the set time of operation.
06. Filter Replacement Indicator

LED light indicates when it is time to change the filter.
07. Light Sensor

Detects the amount of ambient light in the environment.
08. Smart Sensor

Detects the amount of odorous gas in the environment. When in Auto mode, the fan speed adjusts according to the detected amount of gas.
09. Power Button

Turns the unit on or off.

During the first 30 seconds of powering up, the Air Quality Indicator will cycle through Blue, Amber and Red colors. Smart Sensor takes approximately 4 minutes to detect the air quality in the environment before normal operation begins.
10. Mode Button

Press to cycle through to set the mode of operation (Auto, Sleep). The unit will default to Auto with PlasmaWave® enabled when first powered on.
- Auto Mode:

- Auto Mode automatically adjusts fan speeds according to your indoor air quality. The fan speed will adjust to low when air quality is good, medium when fair, and to high when poor.
- Sleep Mode:

- When Sleep Mode is activated, the Air Quality Indicator LED light is disabled.

- Fan speed will automatically set to minimum speed (lower than "Low") which will be nearly silent.

- When Sleep Mode is active, PlasmaWave® will be disabled, but it can be turned back on.
11. PlasmaWave® Button

Enables or disables PlasmaWave®.

"When the unit is running, you may hear a chirping or buzzing sound. The sound is from large particles passing through PlasmaWave®, it is normal and does not signify product failure."

Press the PlasmaWave® button when the unit is on to enable or disable this feature.
12. Air Quality Indicator

Color coded LED light indicates one of three levels of Air Quality: Red (poor), Amber (fair), and Blue (good).
13. Fan Speed Button

Enables manual operation of the unit's fan speeds.

• Press to cycle through and set the desired fan speed (Low, Medium, High, Turbo).
14. Timer Button

Press to cycle through and set desired length of operation (1hr, 4hr, 8hr, [NO TIMER]).
15. Filter Reset Button

After replacing the filter, turn on the unit and then use a thin object, such as a paper clip, to press the Filter Reset Button for 5 seconds.

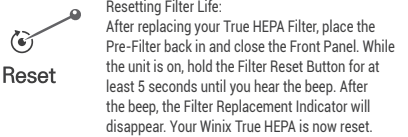
MAINTENANCE

When to Replace Filters

Filter	Indicator Light	When to Service	When to Replace
Pre-Filter	none	Clean once every 14 days	Permanent
Activated Carbon Filter	none	Can NOT be WASHED	Replace every 3 months
True HEPA Filter	Check Filter		Lasts Approx.12 months

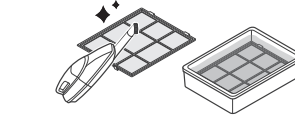
- When the Check Filter Indicator LED is on, it is time to replace the True HEPA Filter and Activated Carbon Filter.
- Intervals between filter replacement may vary depending on environment.

REPLACING FILTERS



CLEANING CARE

Cleaning the Filters:



Cleaning the Exterior & Interior:



NOTICE

- When cleaning the unit, always unplug the power cord first and then wait until the unit has cooled down.
- Never disassemble, repair, or modify the unit yourself.
- Do not use flammable sprays or liquid detergents.
- Do not allow children to clean or maintain the unit.
- Before cleaning or maintaining, ensure unit is unplugged.
- Do not use benzene, alcohol, or other volatile fluids, which may cause damage or discoloration.

SAFETY AND CAUTIONS

Before operating this equipment, carefully read and follow these safety cautions.

Ensure filters are inserted before running unit.

Running the unit without filters can shorten the lifespan of the unit and cause electric shock or injury.

Be sure foreign objects are NOT inserted into the vents on the unit. Objects can include pins, rods, and coins.

Do not touch any part of the interior of the unit with wet hands.

The high voltage may cause electric shock.

Ensure unit intake and outlet vents do not become blocked.


Blockage may lead to increased internal temperatures causing product failure and deformation.

Do not use the unit as a step stool or place heavy objects on the unit.

Personal injury may occur or product failure and deformation.

- If the power cord is damaged, it must be replaced by a special cord. Reassembly is available from the manufacturer or its service agent.

- ⚠ Do not pull on the power cord when unplugging the unit.
- ⚠ Do not tie or knot the power cord when unit is in operation.
- ⚠ If the unit becomes submerged in water, unplug it and contact customer service.
- ⚠ Do not unplug or move the unit while in operation.
- ⚠ Do not plug additional appliances into the same outlet or power supply.
- ⚠ Do not touch the plug with wet hands.
- ⚠ Unplug the unit when not in operation for extended periods of time.
- ⚠ Do not place around heating elements.
- ⚠ Do not use around mist or fumes from industrial oil or around large quantities of metallic dust.
- ⚠ The cord can become damaged by forcefully bending, pulling, twisting, bundling, pinching or placing heavy objects on it.



**WARNING**

Follow these instructions to reduce the risk of serious injury or death and to reduce risk of damaging the unit.

- This appliance is not intended for use by a person (including children) with reduced physical, sensory or mental capabilities, or lack of experience and knowledge of the unit, unless they have been given supervision or instruction concerning use of the appliance by a person responsible for their safety.
- Children should be supervised to ensure that they do not play with the appliance.
- This unit is not intended to be used to preserve documents or art conservation.

- ⚠ Do not install in any sort of motor or transport vehicle (trucks, boats, ships, etc.).
- ⚠ Do not place in an area with excessive amounts of noxious gases.
- ⚠ Do not place near any flammable materials (aerosols, fuel, gases, etc.).
- ⚠ Do not have the unit facing into wind or draft.
- ⚠ Do not place below any electrical outlet.
- ⚠ Do not place in excessively humid areas where the unit may become wet.
- ⚠ Do not place unit closer than 12 inches from the wall during operation. It may cause condensation to the wall and the surrounding area.

TWO YEARS WARRANTY

The terms of the warranty are as follows:

1. This product is manufactured under stringent quality control and inspections.
2. The warranty will be voided if product failure is a result of negligence or misuse by the consumer.
3. A proof of purchase must be presented upon claiming a Product Warranty.
4. Store the proof of purchase in a safe place or register your product on winixamerica.com to upload your proof of purchase.
5. This warranty is valid only in the USA and Canada.

\* for more information visit <https://winixamerica.com/terms-and-conditions/>

Product Name	Air Purifier
Model Name	C535
Purchase Date	
Warranty Period	Two (2) Years
Place of Purchase	
Place of Purchase tel.	
Customer	Address
	Name
	Tel.

After purchase, be sure to complete all of the above information.

\* Certified Refurbished Air Purifiers come with a 1-year warranty. All Winix Certified Refurbished Air Purifiers go through a detailed inspection and refurbishment process to ensure all quality and performance standards are met.

Warning: Changes or modifications to this unit not expressly approved by the party responsible for compliance could void the user's authority to operate the equipment.

Note: This equipment has been tested and found to comply with the limits for a Class B digital device, pursuant to Part 15 of the FCC Rules. These limits are designed to provide reasonable protection against harmful interference in a residential installation. This equipment generates, uses and can radiate radio frequency energy and, if not installed and used in accordance with the instructions, may cause harmful interference to radio communications. However, there is no guarantee that interference will not occur in a particular installation. If this equipment does cause harmful interference to radio or television reception, which can be determined by turning the equipment off and on, the user is encouraged to try to correct the interference by one or more of the following measures:

- Reorient or relocate the receiving antenna.
- Increase the separation between the equipment and receiver.
- Connect the equipment into an outlet on a circuit different from that to which the receiver is connected.
- Consult the dealer or an experienced radio/TV technician for help.

This device contains license-exempt transmitter(s)/receiver(s) that comply with Innovation, Science and Economic Development Canada's license-exempt RSS(s). Operation is subject to the following two conditions:

- This device may not cause interference.
- This device must accept any interference, including interference that may cause undesired operation of the device.

"In French: Cet appareil contient des émetteurs/récepteurs exemptés de licence et conformes aux normes Innovation, Science et Économie. RSS(s) sans licence de Développement Canada. Le fonctionnement est soumis aux deux conditions suivantes:

- cet appareil ne doit pas causer d'interférences nuisibles, et
- cet appareil doit accepter toute interférence reçue, y compris les interférences pouvant provoquer un fonctionnement non souhaité."

SAFETY INSTRUCTIONS

Thank you for purchasing a Winix air purifier. This product is for household use only.

**IMPORTANT CAUTIONS FOR USING YOUR AIR PURIFIER:**  
WARNING: Follow the instructions in this manual to reduce the risk of electric shock, short circuit, and/or fire.

- Do not repair or modify the unit yourself.
- All repairs should be completed by a qualified Winix technician.
- The plug for this unit is polarized with one blade wider than the other. Do not force the plug into an electrical outlet. Do not alter the plug in any way. If the plug does not fit into the outlet, reverse the plug. If it still does not fit, contact a qualified technician to install a proper outlet.
- Do not use if the power cord or plug is damaged or the connection to the wall outlet is loose.
- Use AC 120V only.
- Do not damage, break, forcefully bend, pull, twist, bundle, coat, pinch, or place heavy objects on the power cord.
- Periodically remove dust from the power plug. This will reduce the risk of shock due to humidity build up.
- Remove the power plug from the outlet before cleaning the unit. When removing the power plug, grasp by holding the plug itself, never hold by the cord.
- If the power plug is damaged, it must be replaced by the manufacturer or a qualified technician.
- Remove the power plug from the outlet when not in use.
- Do not handle the power plug with wet hands.
- Do not operate the unit when using indoor smoke-generating insecticides.
- Do not clean unit with benzene or paint thinner. Do not spray insecticides on the unit.
- Do not use the unit where it is humid or where the unit may become wet, such as the bathroom.
- Do not insert fingers or foreign objects into air intake or outlet.
- Do not use the unit near flammable gases. Do not use near cigarettes, incense, or other spark-creating items.
- Unit will not remove carbon monoxide emitted from heating appliances or other sources.
- Unplugging the product disconnects the remote functions.

**IMPORTANT PRECAUTIONS FOR USING YOUR AIR PURIFIER:**

- Do not block the intake or outlet vents.
- Do not use near hot objects, such as a stove.
- Do not use where the unit may come into contact with steam.
- Do not use the unit on its side.
- Keep away from products that generate oily residue, such as a deep fryer.
- Do not use detergent to clean the unit.
- Do not operate without a filter.
- Do not wash and reuse the True HEPA Filter and Carbon Filter.
- Hold the handle on the back of the unit to transport.
- Do not hold by the front panel.
- Do not stick any small objects into the air outlet vents or fan.

**BATTERY IN REMOTE CONTROL:**

- This product contains a button battery. If swallowed, it could cause severe injury or death in just two hours. Seek medical attention immediately.
- "In French: Cet article contient une pile bouton. De graves blessures ou la mort pourraient suivre dans les deux heures suivant l'ingestion. Demander l'aide de professionnels de la santé sur le champ."

WINIX  
AIR PURIFIER






C535 USER MANUAL

SPECIFICATIONS

Model	C535
Voltage	AC120V/60Hz
Power Rate	70 W
Verified Room Size	360 sq.ft.
Dimensions	15 in(W) × 8.2 in(D) × 23.6 in(H)
Weight	14.7 lbs
Replacement Filter	Filter A / SKU: 115115

The exterior, design, and product specifications may be changed without prior notice to improve product performance.



The energy efficiency of this ENERGY STAR certified model is measured based on a ratio between the model's CADR for smoke and the electrical energy it consumes, or CADR/Watt.

Contact Winix for product related inquiries and customer service

- Dedicated Call Center: ☎ (877) 699-4649
- Website: [winixamerica.com](https://winixamerica.com)

To expedite service, please specify the model name and number, the nature of the problem, your contact information, and your address.