

Item #: 178A19FHC Project: \_\_\_\_\_

Qty: \_\_\_\_\_ Date: \_\_\_\_\_ Approval: \_\_\_\_\_

## Avantco A-19F-HC 29" Solid Door Reach-In Freezer

Item #178A19FHC



### Technical Data

Width	29 Inches
Depth	25 1/2 Inches
Height	82 1/2 Inches
Power Cord Length	96 Inches
Interior Width	24 3/8 Inches
Right Door Opening Width	24 5/16 Inches
Shelf Width	23 3/8 Inches
Interior Depth	20 3/8 Inches
Shelf Depth	19 5/16 Inches
Interior Height	53 1/2 Inches

### Features

- Includes 3 epoxy coated shelves with 88 lb. capacity each
- Digital temperature controller with automatic defrost function
- R-290 refrigerant; 115V; 2/3 hp
- Corrosion-resistant stainless steel exterior and aluminum interior with 304 stainless steel floor
- Features a self-closing and stay-open locking door

### Certifications



5-15P



ETL, US

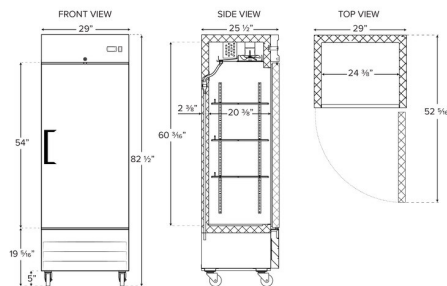


ETL Sanitation

## Technical Data

Amps	3.8 Amps
Hertz	60 Hz
Phase	1 Phase
Voltage	115 Volts
Wattage	396 Watts
Access Type	Doors
BTU (LBP)	2080 BTU
Capacity	17.3 cu. ft.
Capacity (per Shelf)	88 lb.
Casters	With Casters
Color	Silver
Compressor Location	Bottom Mounted
Construction	Stainless Steel and Aluminum
Door Style	Swing
Door Type	Solid
Dutch Half Doors	Without Dutch Half Doors
Features	Removable Magnetic Door Gaskets
Handle Material	Plastic
Hinge Location	Right
Horsepower	3/5 hp
Installation Type	Freestanding
Number of Doors	1 Doors
Number of Shelves	3 Shelves
Plug Type	NEMA 5-15P
Refrigerant Capacity	4.1 oz.
Refrigerant Type	R-290
Sections	1 Section
Starting Amps	11.4 Amps
Starting Wattage	1188 Watts
Temperature Range	-8 - -1 Degrees F
Type	Freezers

## Plan View





## Notes & Details

Your establishment relies on refrigeration for proper food safety, and with this Avantco A-19F-HC 29" solid door freezer, you receive performance you can depend on! A painted aluminum interior with a 304 stainless steel floor gives you increased durability, while a 430 stainless steel door and exterior sides give it a sleek appearance. For convenience, 3 epoxy coated shelves feature shelf clips for customization when desired.

Designed to maintain temperatures from -8 to -1 degree Fahrenheit, this freezer boasts a bottom-mounted 2/3 hp compressor that Uses R-290 refrigerant. This specialized refrigerant has an ozone depletion potential (ODP) of 0 and a global warming potential (GWP) of 3. In addition, the bottom-mounted design makes it easy for employees to load and unload products due to the raised bottom shelf. For optimal temperature retention, the entire cabinet is foamed-in place using polyurethane insulation. Other helpful features include the stay open locking door mechanism, automatic defrosting, and a digital temperature control with digital display. This item requires a 115V electrical connection for operation.

**⚠ WARNING:** This product can expose you to chemicals including lead, which are known to the State of California to cause cancer and birth defects or other reproductive harm. For more information, go to [www.p65warnings.ca.gov](http://www.p65warnings.ca.gov).