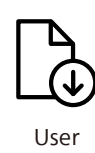
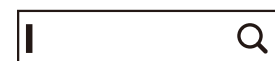


MultiView	Inputs	SUB SOURCE POSSIBILITY (x1)			
		HDMI	DisplayPort	USBC1	USBC2
MAIN SOURCE (x1)	HDMI	●	●	●	●
	DisplayPort	●	●	●	●
	USBC1	●	●	●	●
	USBC2	●	●	●	●



Register your product and get support at www.philips.com/support



Version: M1140BU5601Q1WWT
2022 © TOP Victory Investments Ltd. All rights reserved.

This product has been manufactured by and is sold under the responsibility of Top Victory Investments Ltd., and Top Victory Investments Ltd. is the warrantor in relation to this product. Philips and the Philips Shield Emblem are registered trademarks of Koninklijke Philips N.V. and are used under license.

Specifications are subject to change without notice.

HDMI

The terms HDMI, HDMI High-Definition Multimedia Interface, HDMI Trade Dress and the HDMI Logos are trademarks or registered trademarks of HDMI Licensing Administrator, Inc.

www.philips.com

Energy Labelling
40B1U5601H



Printed in China



Q41G40M181310B

PHILIPS

Business
Monitor

5000 Series

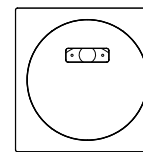
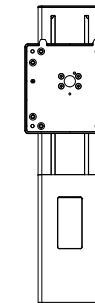
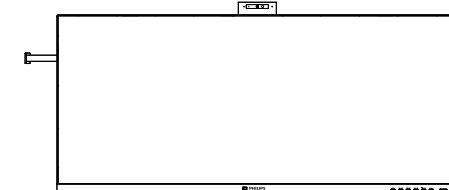


40B1U5601H

Quick start

Register your product and get support at www.philips.com/welcome

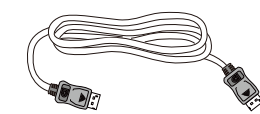
Contents



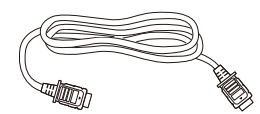
Screw and screwdriver
M4 x 4



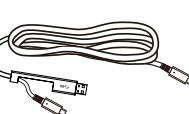
Power



* DP



* HDMI



*USB C-C/A

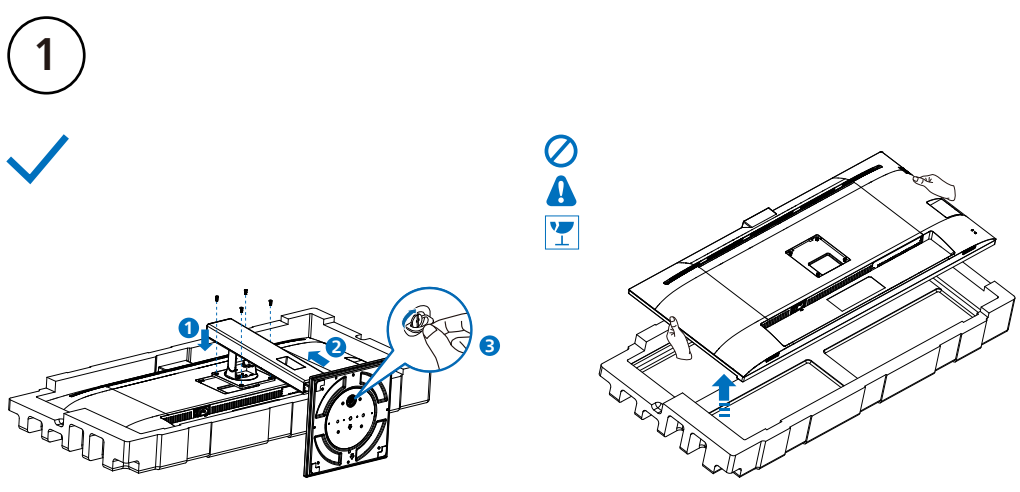


*USB C-C

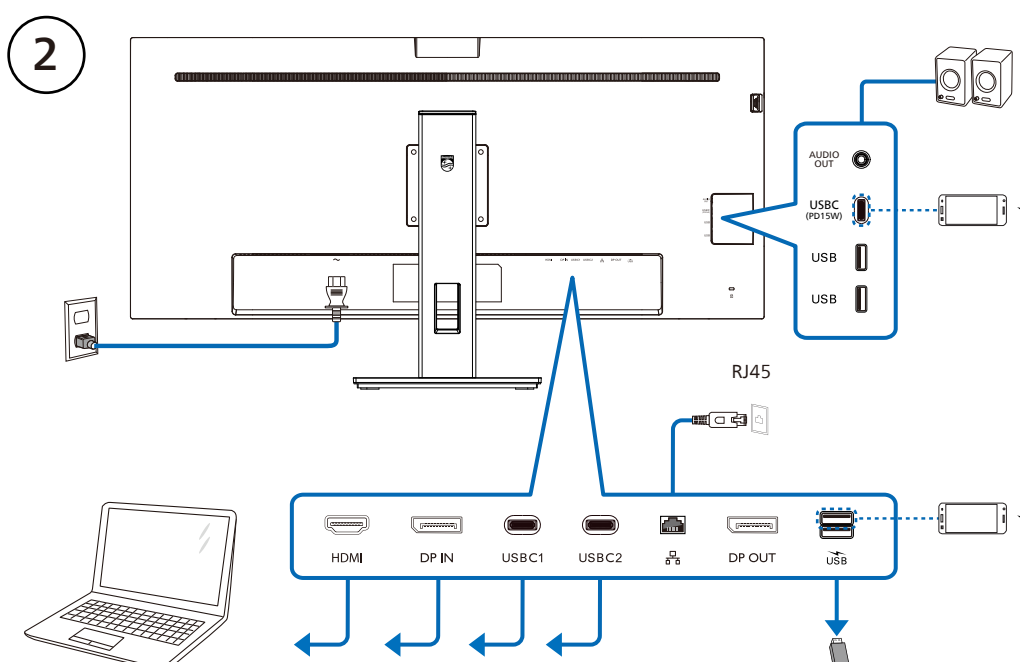


*USB C-A

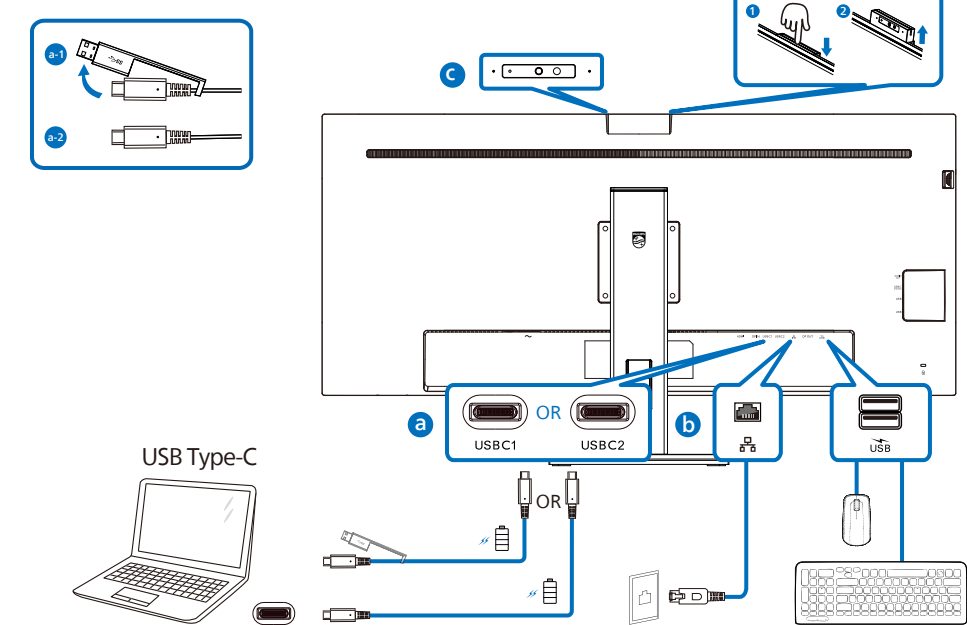
*Different according to region
Display design may differ from that illustrated



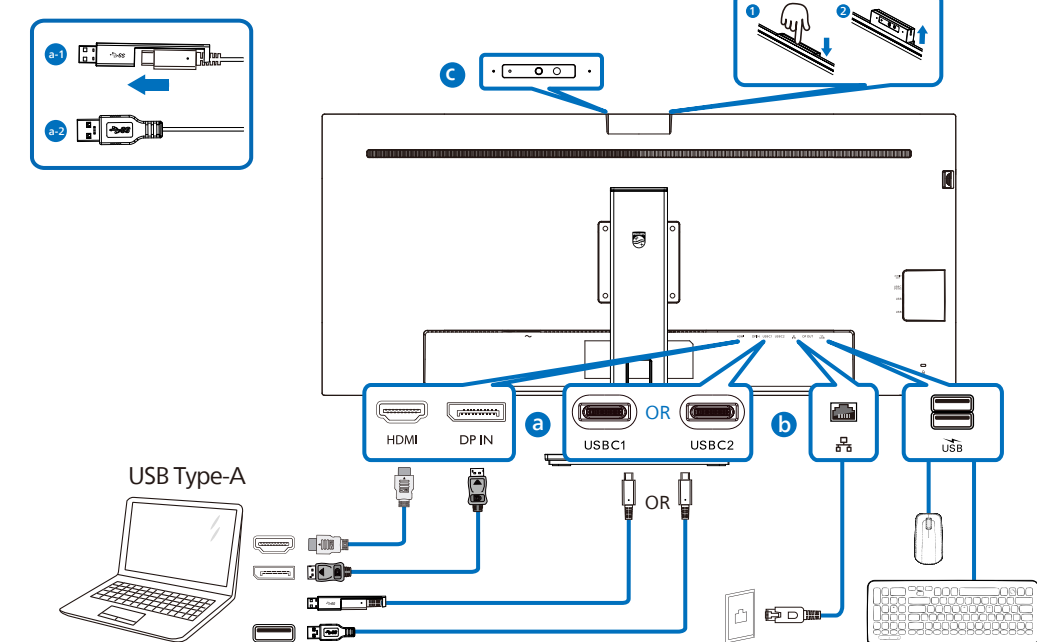
CAUTION: Place the monitor face down on a smooth surface. Pay attention not to scratch or damage the screen.



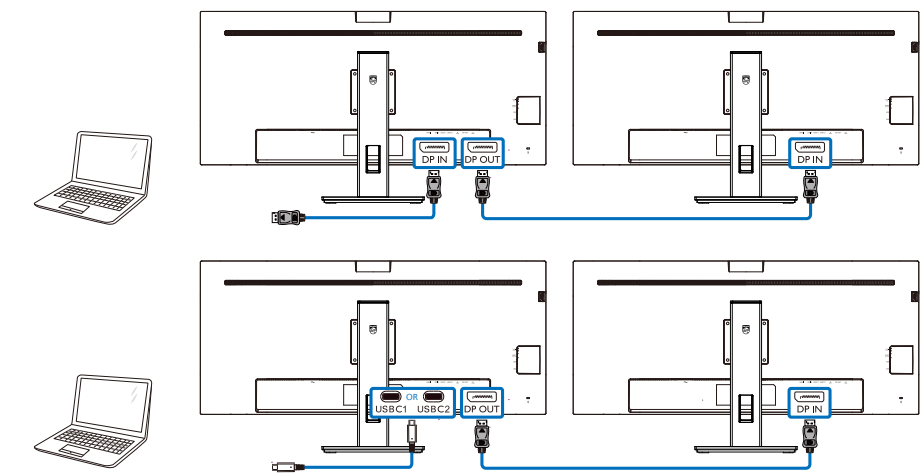
USB docking (USB C-C)



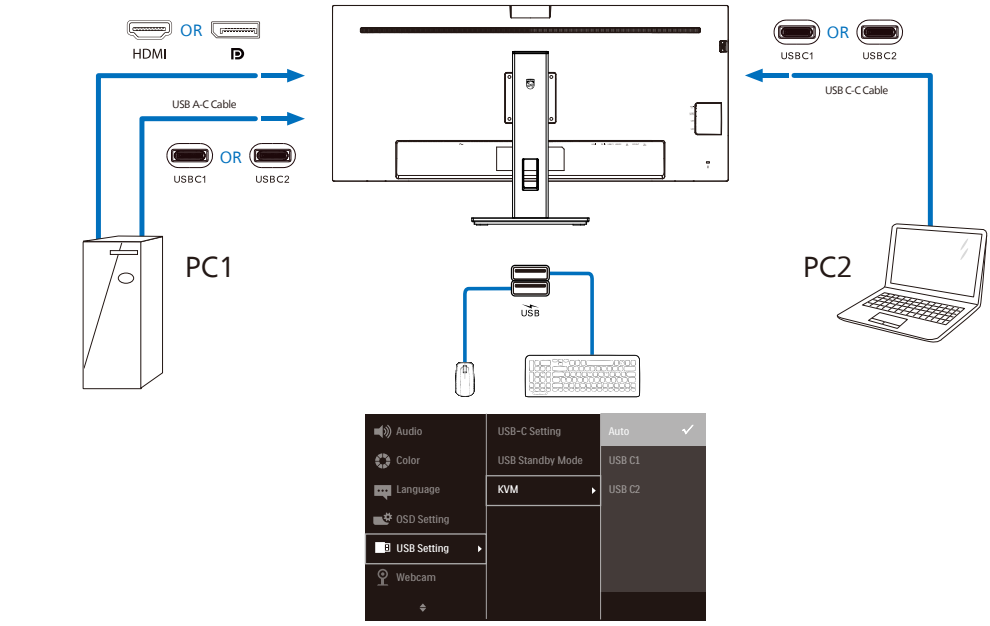
USB hub (USB A-C)



Multi-stream transport



KVM



Earphone-Hang

