

Nose hair trimmer・3580



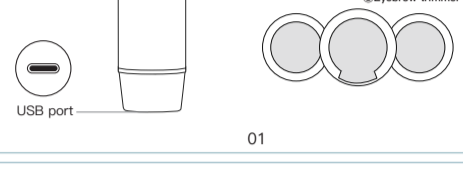
Specifications	01
Product Structure	01
Installation	02
Important (Be sure to observe)	02
Using the appliance	03
Taking off the trimming head	06
Putting on the trimming head	06
Cleaning	06

Thank you for purchasing our product.
Please read this user manual carefully before you use the Nose hair trimmer and save it for future reference.

01 Specifications

Power supply	Charging mode
Weight	Body about 82g (including nose trimmer head and cap)
Product Size	14.5×3×3.3cm
Main body material	Plastic

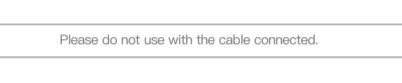
02 Product Structure



01

03 Installation

- 1.Connect the USB cable to the USB port on the bottom of the main unit to charge.
2. For the first use, please charge 2 hours. Unplug the USB cable when charging is completed.



Please do not use with the cable connected.

04 Important (Be sure to observe)

Read this user manual carefully before you use the appliance and save it for future reference.

Warning

- The appliance is not intended for use by persons(including children)with reduced physical,– sensory or mental capabilities or lack of experience and knowledge ,unless they have been given supervision or instruction concerning use of the appliance by a person responsible for their safety.Children should be supervised to ensure that they do not play with the appliance.

02

Caution

- Do not use the appliance when the cutting element or the appliance itself is damaged or broken ,as this may cause injury.
 - Use and store the appliance at a temperature between 0°C and 35°C.
Do not use it in water or high temperature place.
 - This appliance is only intended for trimming nose hair,ear hair,eyebrows and beard.
Do not use it for another purpose.
 - For hygienic reasons, the appliance should only be used by one person.
 - Do not touch the blade part (metal part) of the inner blade by hand, as this may hurt your hands.
 - Do not modify, disassemble or repair, as this may cause accident or injury.
- If there is a failure during the warranty period, please contact us.

05 Using the appliance

- 1.Remove the protection cap by pulling it off the appliance.
- 2.Turn the switch "ON".
- 3.Before you use the trimmer for the first time, test it on a small part of your arm or leg.

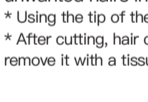
* The surface of the blade may get slightly hotter during use, but this does not affect performance.

- 4.Trim hairs

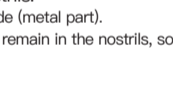


03

Trimming nose hair



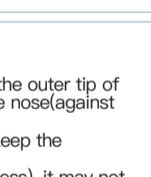
- ①Carefully insert the cutting element into one of your nostrils.
*Please put it in slowly.Be careful not to hurt your nostrils.
*Do not insert the cutting element more than 0.5cm into your nostrils.



- ②Slowly move the appliance around to remove all unwanted hairs in your nostrils.
* Using the tip of the outer blade (metal part).
* After cutting, hair debris may remain in the nostrils, so remove it with a tissue etc.

Trimming the eyebrows

- ①Comb your eyebrows in the direction of hair growth.
- ②Choose the short or long comb,depending on the desired hair length.The indications "short" and "long"



04

are on the combs.
Move the comb over eyebrow from the outer tip of the eyebrow towards the base of the nose(against the direction of hair growth)
* Never try to trim your eyelashes. Keep the appliance away from your eyes.
* If the hair is too short (0.5 mm or less), it may not be cut.

Trimming the ear hair

Make sure your outer ear channels are clean and free from wax.

- ①Slowly move the cutting element along the rim of the ear to remove hairs that stick out beyond the rim.

- ②Insert the cutting element into the outer ear channel.

* Do not insert the cutting element more than 0.5cm into your ear channel,as this could damage the eardrum.

Slowly turn the appliance around to remove all unwanted hairs from your outer ear channel.



Trimming the Beard

- ①Place the cutting element gently on the skin and move the appliance slowly over the skin against the direction of hair growth.



05

- 5.Switch to "OFF"
- 6.Put the protection cap on



06 Taking off the trimming head

[How to remove]

- ① Turn the trimming head to the right
- ② Pull out the trimming head



07 Putting on the trimming head

[How to install]

- ① Insert the trimming head into the main body
- ② Turn counterclockwise to match the mounting position of the main body



08 Cleaning

The main body of the nose hair trimmer cannot be washed with water.

Solution 1 :

Clean the cutting element with the brush supplied. Pay extra attention to the edges of the cutting element.

Solution 2:

Pull out the trimming head.

Rinse the cutting element under the tap with fresh water and let it dry.

06

Warranty Card

Dear Customer,

Thank you for your support! We are committed to let our customers have a better shopping experience and use feeling. In order to eliminate secondary sales, we have plastic encapsulated the product. We sincerely hope that we can become friends with you by this transaction!

No matter what you have any problems or dissatisfaction, please contact us by nosehairservice@outlook.com in time. Whatever the reason makes you need to return or exchange, we are very sorry and regrettable, and please rest assured that our after-sales team will handle it properly for you until you are satisfied.

Within 3 months from the date of purchase, if there is any quality problem with the product itself, we will provide a free reissue of a new product and a 100% refund service.

07