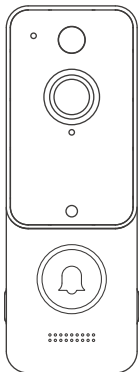


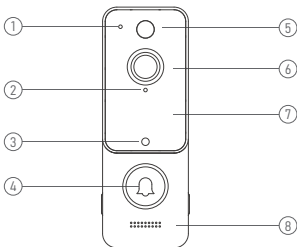
P8 Video Doorbell



Scan the code
to view the user manual

User Manual 3.0

Features



1. Microphone

2. Indicator Light

3. Light Sensor

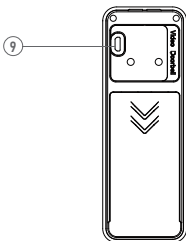
4. Doorbell Button

5. Motion Sensor

6. Wide-angle Lens

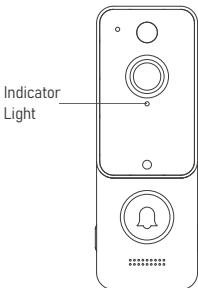
7. Infrared Lights

8. Speaker



9. Micro USB Port (For Battery Charging)

Indicator light



Flashing RED

The device is disconnected from Wi-Fi. It will attempt to reconnect automatically. If it fails, please reset the device and pair it again in the app.

Flashing RED and BLUE Alternately

Low battery. Please recharge the device.

Flashing BLUE

The device is recording.

Solid RED

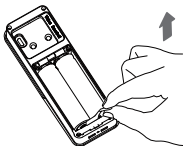
The device is charging.

RED Light Turns OFF

When the device is fully charged.

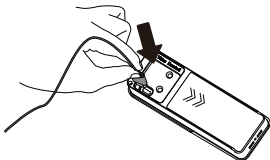
Recharge your batteries

1. Recharge your doorbell camera before first use
2. Remove the battery tab



3. Recharge Your Doorbell Camera

Use a standard micro-USB cable, such as the one provided in the box. Simply plug it into any 5V1A USB power source. Your doorbell camera may take approximately 14 hours to fully charge, depending on whether the USB cable is connected to a USB port or a wall outlet.



A solid RED light indicates that the doorbell is charging. When the doorbell is fully charged, the RED light will turn off.

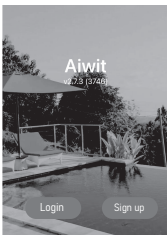
Create an account in the Aiwit app

1. **Scan the QR code below** or search for Aiwit in the Apple App Store or Google Play. Then download and install the app.

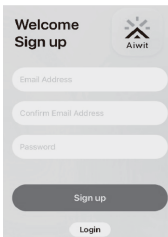


Android/ios
App Download

2. **Open the Aiwit app** on your cellphone and tap **Sign up**.

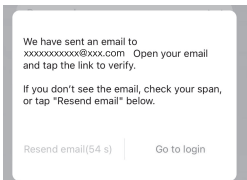


3. Enter your email, set a password, and tap **Sign up**.



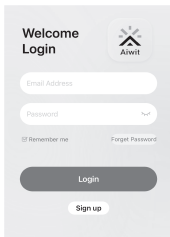
The image shows a mobile app sign-up screen for 'Aiwit'. At the top left, the text 'Welcome Sign up' is displayed. At the top right is the Aiwit logo, which consists of a stylized mountain peak with radiating lines above the word 'Aiwit'. Below the header are three input fields: 'Email Address', 'Confirm Email Address', and 'Password'. At the bottom, there are two buttons: a large dark grey 'Sign up' button and a smaller light grey 'Login' button.

4. You will receive an email with an activation link. Open your email and tap the **Activate Account** or link to verify.



The image shows a confirmation screen for email verification. It contains the following text: 'We have sent an email to xxxxxxxxxxxx@xxx.com Open your email and tap the link to verify.' Below this, it says: 'If you don't see the email, check your spam, or tap "Resend email" below.' At the bottom, there are two links: 'Resend email(54 s)' and 'Go to login'.

5. **Open the Aiwit app again.** Enter your **email address** and **password**, and tap **Log in**.



Set up your camera in the Aiwit app

Make sure your cellphone's Bluetooth(📶) is turned on before setting up the camera.

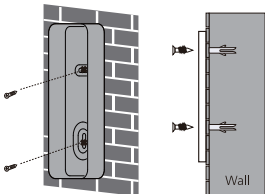
1. Open the Aiwit app and **log into your account**.
2. To add your camera, select the **+ icon**.
3. Choose the device type **Video Doorbell** and then select the model **P8**.
4. Press and hold the doorbell button until the red light starts flashing. You will hear **Entering pairing mode**.

5. **Select or enter your 2.4GHz Wi-Fi network** and enter the **password**, and tap **Next**.
(Note: 5GHz Wi-Fi is not supported)
6. Check your Wi-Fi network name and password. Tap **Confirm**.
7. **Scan the QR code** using your device's camera. You are all set.

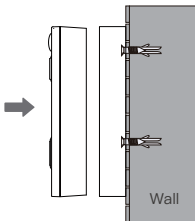
Install your video doorbell

1. Prepare for mounting

Mark the drill holes and use a bit to drill into your wall. Insert the anchors and secure your backplate with the provided mounting and screws.



2. Reattach the doorbell to the backplate.



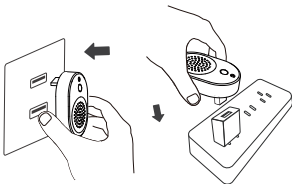
Set up your wireless chime

Connect the video doorbell to the doorbell chime, and receive an instant alert in your home when someone rings the doorbell. The chime plugs into any 5V USB port, allowing you to place it anywhere in your home.

Wireless Chime



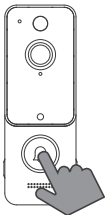
1. Connect the video doorbell to the doorbell chime, and get an instant alert in your home when someone rings the doorbell. The chime plugs into any 5V USB port, so you can place it anywhere in your home.



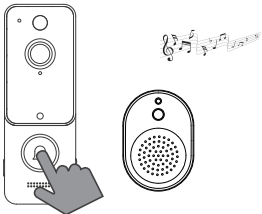
2. Before beginning the setup process, ensure your video doorbell is connected to your phone. Then, plug your chime into a USB port and press the pairing button.



3. Press the doorbell button to pair it with the chime.





4. Press the doorbell button again to verify that the chime and doorbell are working properly.




Please note the volume of the chime is not adjustable.

Frequently asked questions

1. How can I share the device with family members?

Open the Aiwit app and tap on Settings . From there, you can share  the device via QR code or email, and even transfer ownership of the device. The new user must first download the Aiwit app and create their own account.

2. Why can't I change the settings?

Only the owner account  can change settings, delete videos, and share the device. Shared accounts do not have these options.

3. How many users can view the device at the same time?

The owner account can share the device with up to 8 other accounts. Up to 3 users may view the video feed at once, but only 1 user can use the intercom.

4. Is the 5GHz Wi-Fi supported?

No, the camera only works with 2.4GHz Wi-Fi. Please separate two Wi-Fi bands by giving the 2.4 GHz and 5 GHz networks each a unique separate SSID (network name). Then connect your device to the 2.4GHz Wi-Fi.

5. Why is my Wi-Fi signal weak?

Your camera may be too far from your wireless router, or there may be obstructions reducing signal strength. You might want to reposition your router or get a signal extender/repeater.

6. Why is the device offline?

The camera being offline means it is disconnected. There could be a few reasons for this:

- 1) The camera has run out of power. You will need to recharge it.
- 2) The Wi-Fi signal is weak, causing disconnection. Please improve your Wi-Fi signal and reconnect the device.
- 3) If the Wi-Fi is unstable, the device might go offline or get delayed frequently. You can try restarting the router and reconnecting the Wi-Fi to see if it helps. A good Wi-Fi connection is essential since the device is outside the house.

7. How can I adjust the human detection accuracy?

Open the Aiwit app and tap on Settings. Next, tap on Motion Settings. Here, you can select the desired human detection accuracy from three options: low, medium, and high. We recommend choosing medium. The high setting provides the strictest detection level, meaning the device will be triggered only when it is entirely certain that the moving object is a human. However, this stringent setting might cause the device to overlook a human figure, resulting in a missed notification.

High Accuracy - The device will record videos less frequently, ensuring maximum battery life.

Medium Accuracy - Medium battery life.

Low Accuracy - The device will record videos more frequently, leading to the shortest battery life.

If the areas you're monitoring experience excessive or repetitive motions, like children playing in the yard, you may receive numerous alerts, which can rapidly deplete the battery of devices. The human detection accuracy settings are designed to help you receive the notifications you want while preserving battery life.

8. How can I enable notifications on my phone?

Open the Aiwit app. From the Device page, tap the Settings icon, then tap the Motion Detection icon. Here, you can choose whether to turn Motion Alerts on or off.

Open your phone's settings. Navigate to "App Management" and "Notification Settings," then locate the Aiwit app. Ensure all permissions and notifications are enabled for the Aiwit app.

Contact us

If you have any questions regarding your new product, please feel free to contact our customer service via the Aiwit app.

