



58665E

www.bestwaycorp.com

OPERATING WARNING

IMPORTANT SAFETY INSTRUCTIONS

READ AND FOLLOW ALL INSTRUCTIONS.

WARNING: To reduce the risk of injury, do not permit children to use this product.

WARNING: Assembly and disassembly of this product should only be performed by adult.

WARNING: Do not remove or obstruct the float opening while the filter pump/sand filter is operating.

WARNING: Keep hands and hair away from the Pool Vacuum while the filter pump/sand filter is operating.

WARNING: Do not use the filter pump/sand filter while the pool is occupied.

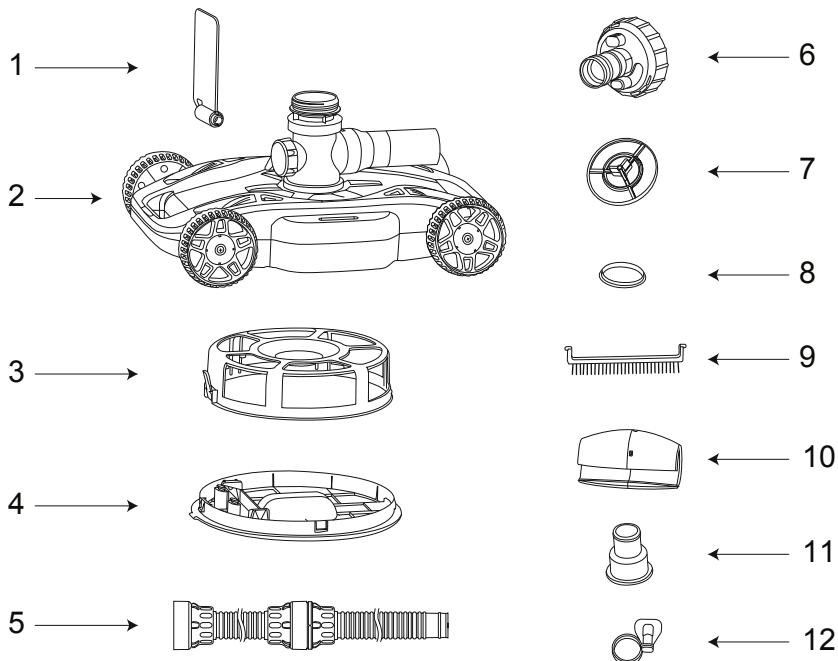
WARNING: Ensure the filter pump/sand filter is unplugged before any maintenance begins or severe risk of injury or death exists.

NOTE: Remove the product from the pool before placing a cover over the pool.

NOTE: Drawings for illustration purpose only. May not reflect actual product. Not to scale.

PART LIST

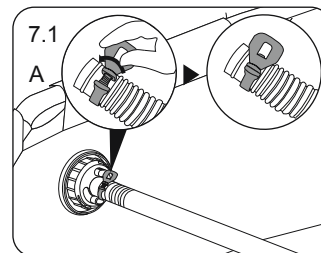
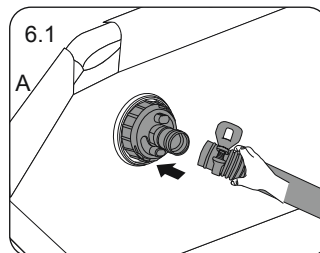
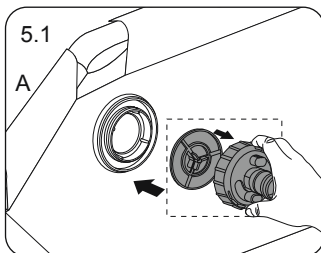
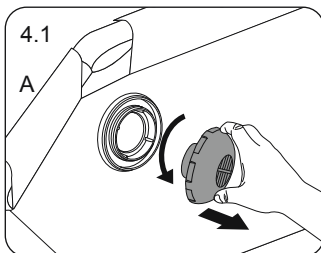
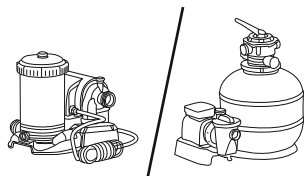
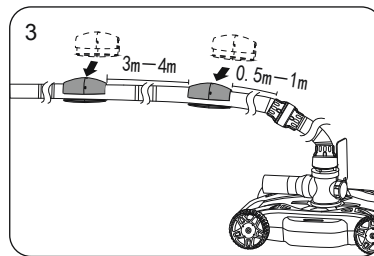
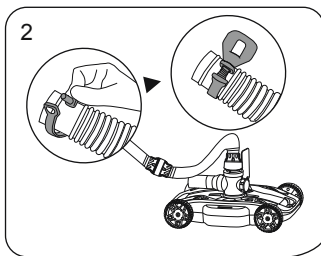
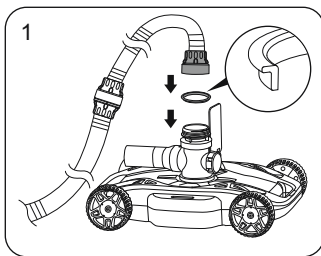
ITEM	NAME	QTY
1	Flap	1
2	Main Body	1
3	Debris Compartment	1
4	Bottom Cover	1
5	Hose	1
6	Pressure Relief Valve	1
7	Pressure Relief Valve Filter	1
8	Seal	1
9	Brush	1
10	Float	2
11	Hose Adapter	1
12	Hose Clamp	1

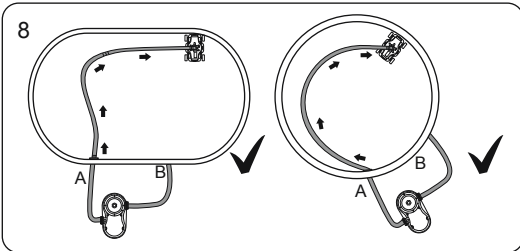
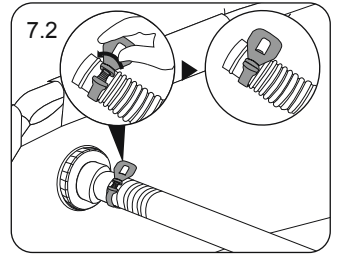
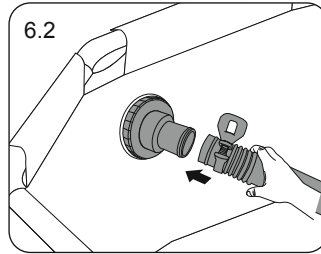
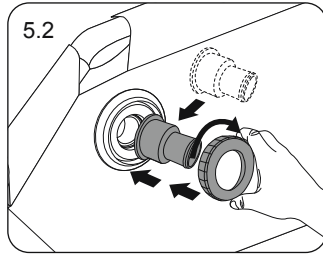
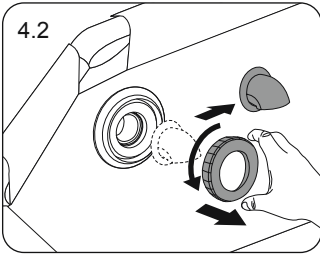
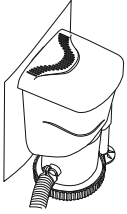


Applicable Pump: 1,500-3,200 gal./h Filter Pump or Sand Filter

Applicable Pool: 22 ft. (6.7 m) and below Above Ground Pool

INSTALLATION



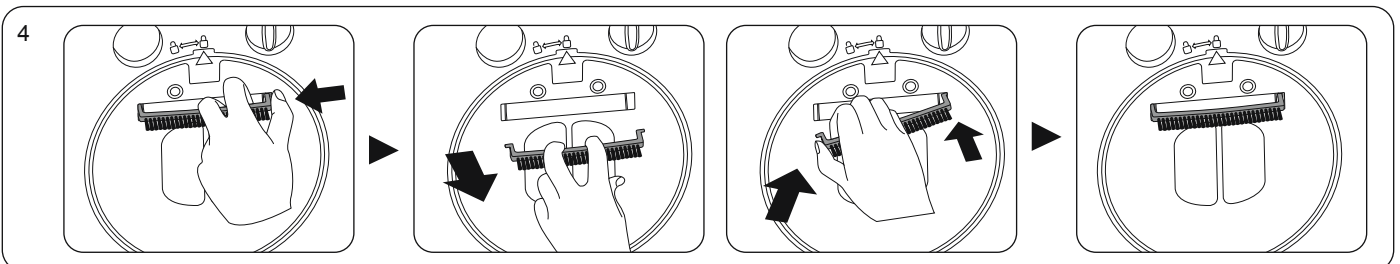
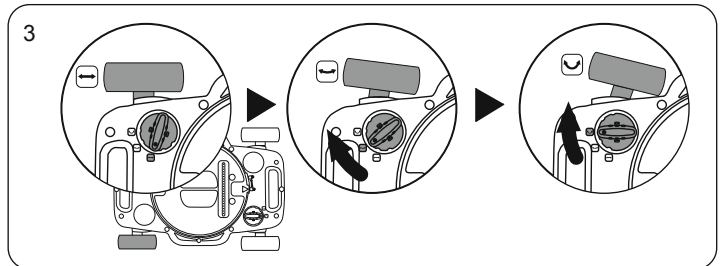
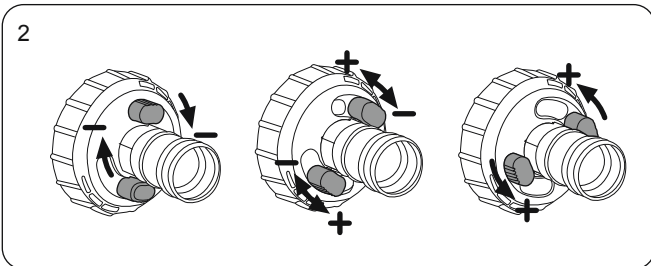
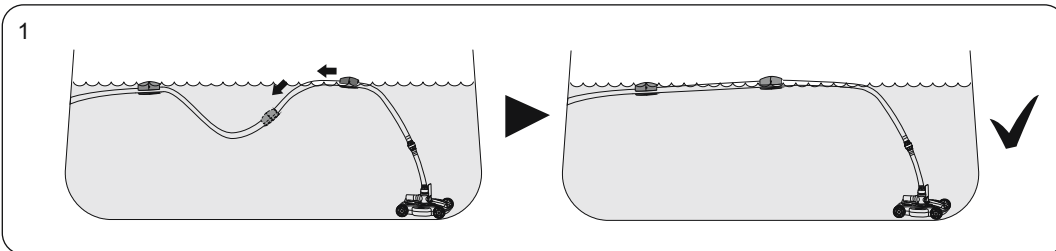


HOW TO USE THE PRODUCT

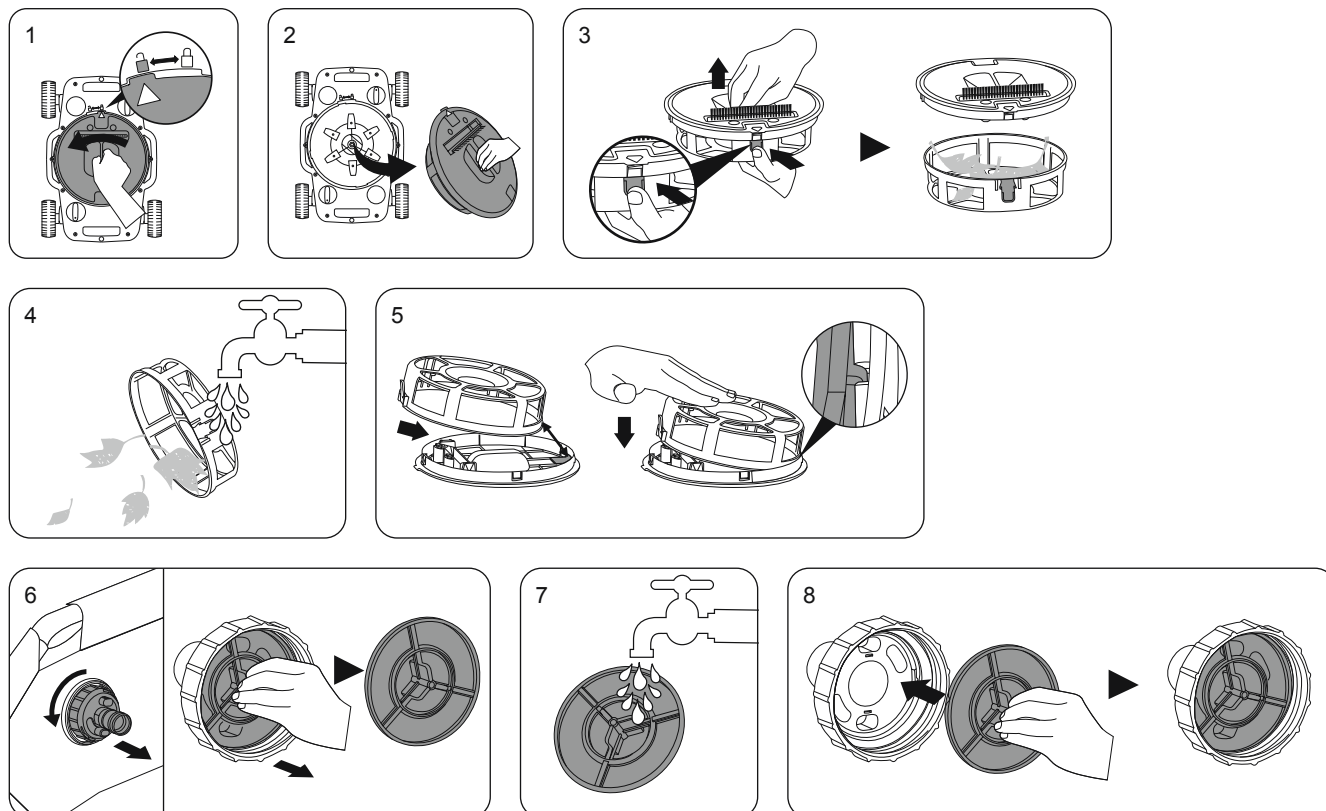
If the following situations occur during operation, please operate as shown to keep the robot in the best working condition.

1. During operation, if the hose sinks below the water surface, please adjust the position of the float.
2. When adapting to a high-flow pump, if the following situations occur, please refer to the operation diagram, and adjust the pressure relief valve knob to appropriately reduce the running speed of the cleaner:
 - 2.1. After the hoses are straightened out, serious hose entanglement occurred in continuous long-term operation;
 - 2.2. The robot runs too fast, the wheels tip over or the wheels do not move along the bottom of the pool.
3. When the robot runs for a long time, if the running track does not cover most of the pool area, or the running track is repeated. Please adjust the wheel angle knob appropriately.
4. When adapting to 1500 gal. filter pump, please remove the brush.

NOTE: It is normal for the robot to leak water at the water pipe joints during the water supply process.



HOW TO CLEAN THE PRODUCT



TROUBLESHOOTING

Problem	Possible Cause	Solution
Robot does not capture the debris, moves slowly or does not move at all.	Debris compartment is full	Clean the debris compartment. Rinse with water to remove debris.
	Pressure relief valve filter is clogged	Clean the pressure relief valve filter. Rinse with water to remove debris.
	Pool suction fitting is clogged	Clean the pool suction fitting. Rinse with water to remove debris.
	The filter cartridge or sand is too dirty	Filter pump - Stop the pump, block the connector A and B to avoid water flowing out from the pool, and clean the filter cartridge or replace if necessary. Sand filter pump - Disconnect the cleaner from the pool, perform backwash and rinse to clean the sand.
	Air inside the pump	Stop the filter pump or sand filter, purge the air and start again.
	The robot is stuck on wrinkles	Check the bottom of the pool. If there are wrinkles, level the pool to reduce them. Check to see if the debris screen inside of the head is dirty. Clean the debris screen. Check to see if the filter cartridge or filter sand is dirty. Clean the filter cartridge or back wash the filter sand.
	Wheel is jammed	Check and remove debris from the wheel.
	The water valve did not open	Open the water valve
	Damaged debris compartment or pressure relief valve filter	Return to the shop to get assistance
The hoses are entangled	Hose not straightened out	Turn off the pump, reconnect the product at the diagonal position of the pool, the water hose should be in a C shape, the product should be placed into the water in the direction of the water hose.
	The hose sinks into the water	Adjust the position of the float to make the hose float on the water.
	The robot running speed is too fast	Regulating pressure relief valve
The driving path of the robot cannot cover the entire pool	The wheels are not in the correct position	Adjust the wheel driving angle



©2021 Bestway Inflatables & Material Corp.

All rights reserved/Tous droits réservés/Todos los derechos reservados/Alle Rechte vorbehalten/Tutti i diritti riservati

Trademarks used in some countries under license from/

Marques utilisées dans certains pays sous la licence de/

Marcas comerciales utilizadas en algunos países bajo la licencia de/

Die Warenzeichen werden in einigen Ländern verwendet unter Lizenz der/

Marchi utilizzati in alcuni paesi concessi in licenza a

Bestway Inflatables & Material Corp., Shanghai, China

Manufactured, distributed and represented in the European Union by/

Fabriqués, distribués et représentés dans l'Union Européenne par/Fabricado, distribuido y representado en la Unión Europea por/

Hergestellt, vertrieben und in der Europäischen Union vertreten von/Prodotto, distribuito e rappresentato nell'Unione Europea da

Bestway (Europe) S.r.l., Via Resistenza, 5, 20098 San Giuliano Milanese (Milano), Italy

Distributed in Latin America by/Distribué en Amérique latine par/Distribuido en Latinoamérica por/Distribuído na América Latina por

Bestway Central & South America Ltda, Salar Ascotan 1282, Parque Enea, Pudahuel, Santiago, Chile

Distributed in Australia & New Zealand by **Bestway Australia Pty Ltd, Unit 2/98-104 Carnarvon St Silverwater, NSW 2128, Australia**

Tel: Australia: (+61) 29 0371 388; New Zealand: 0800 142 101

Distributed in United Kingdom by **Bestway Corp UK Ltd, 8 Wentworth Road, Heathfield Industrial Estate, Newton Abbot, Devon, TQ12 6TL**

Exported by/Exporté par/Exportado por/Exportiert von/Esportato da

Bestway (Hong Kong) International Ltd./Bestway Enterprise Company Limited

Suite 713, 7/Floor, East Wing, Tsim Sha Tsui Centre, 66 Mody Road, Kowloon, Hong Kong

Tel: +86 21 69135588 (For U.S. and Canada)

www.bestwaycorp.com