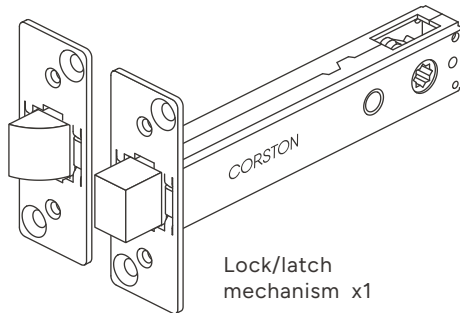


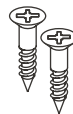
Tubular locks & latches

INSTRUCTIONS

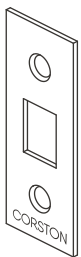
INCLUDED



Lock/latch
mechanism x1



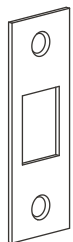
Crosshead wood screw x2



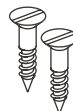
Facing plate x1



Flathead facing
screw x2



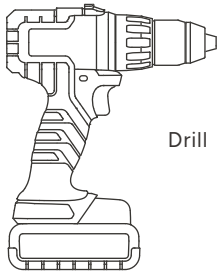
Strike plate x1



Flathead wood screw x2

Tubular locks & latches instructions

TOOLS YOU'LL NEED



Drill



Crosshead screwdriver



2mm drill bit



5mm drill bit



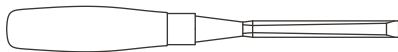
12mm drill bit



25mm drill bit

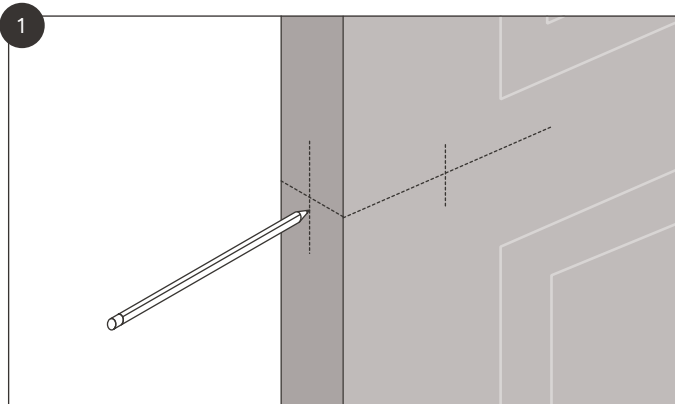


Flathead screwdriver

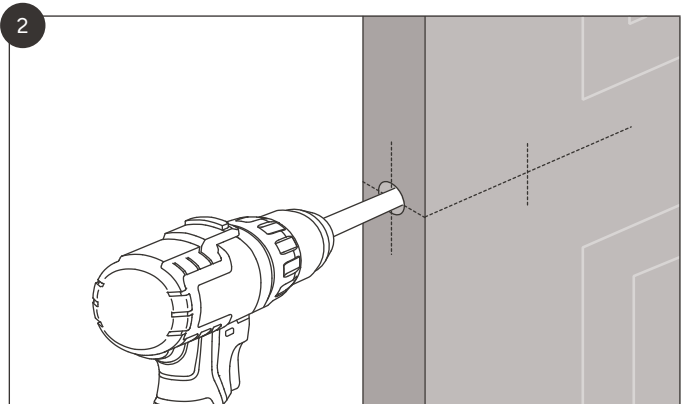


Chisel

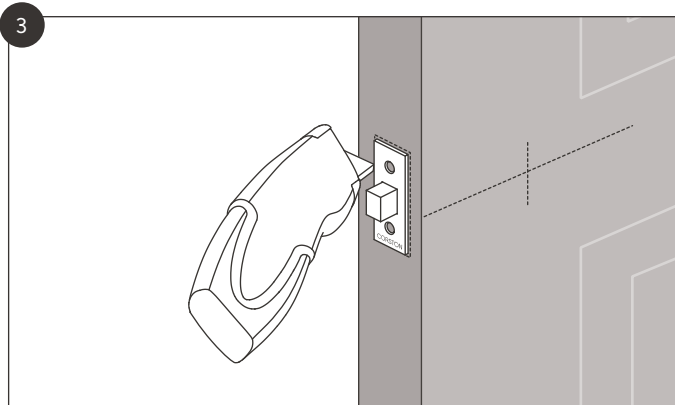
Tubular locks & latches instructions



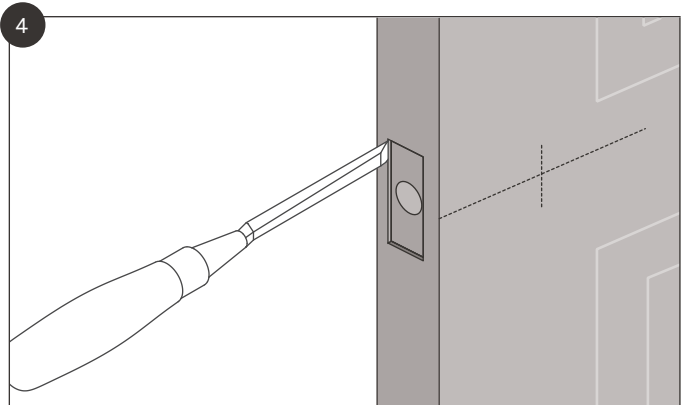
Mark out the desired location of the lock/latch, including the spindle hole. We suggest marking the hole on both sides of the door.



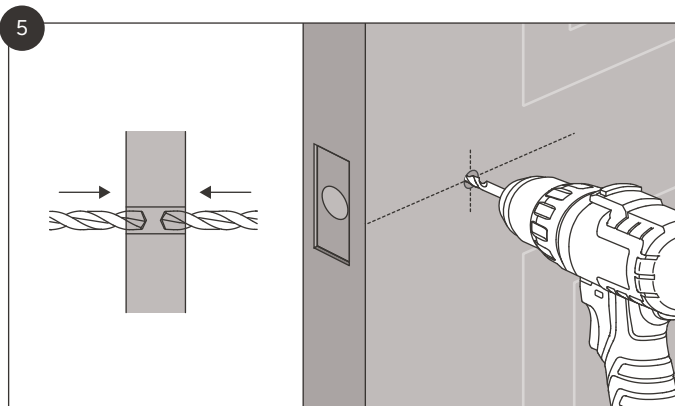
Drill out the centre bore hole with a 25mm drill bit.



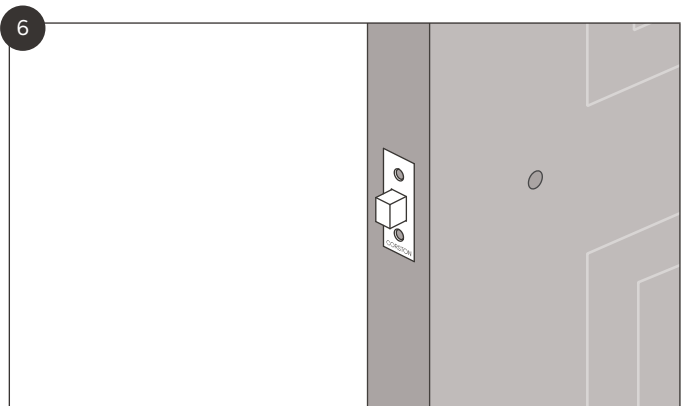
Insert the lock/latch and mark the plate outline. For best results we recommend using a sharp blade to carefully score the outline.



Remove the lock/latch and chisel out a 3mm recess for the plate.

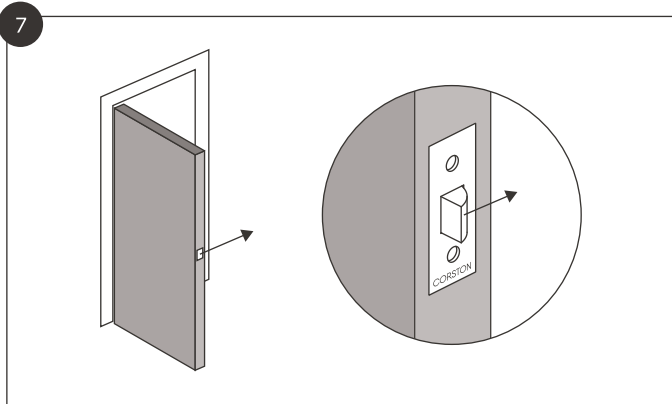


Drill a 12mm hole for the spindle in the position marked. Drill from both sides of the door to ensure the hole is not angled and to reduce chances of the door splintering.

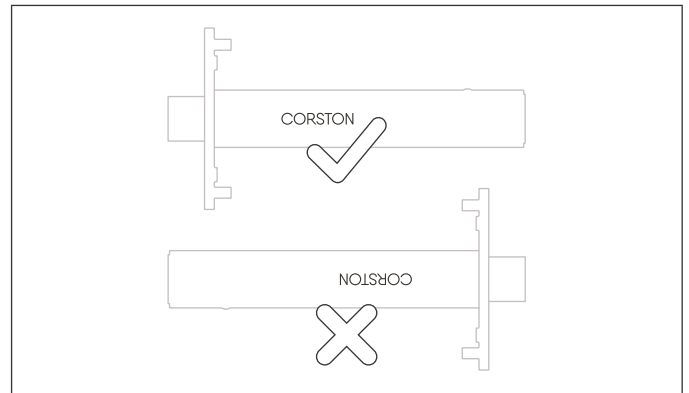


Insert the lock/latch to check everything fits and all the holes line up.

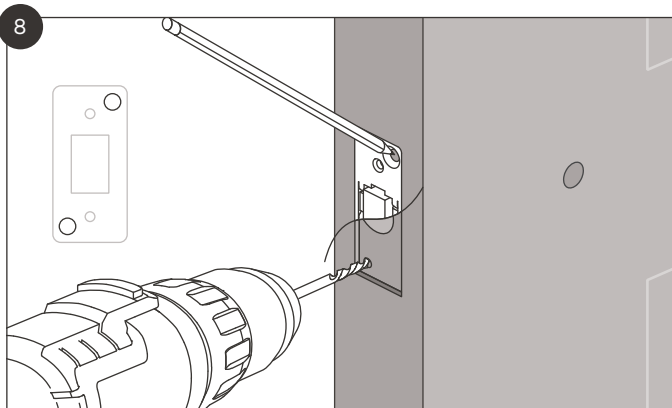
Tubular locks & latches instructions



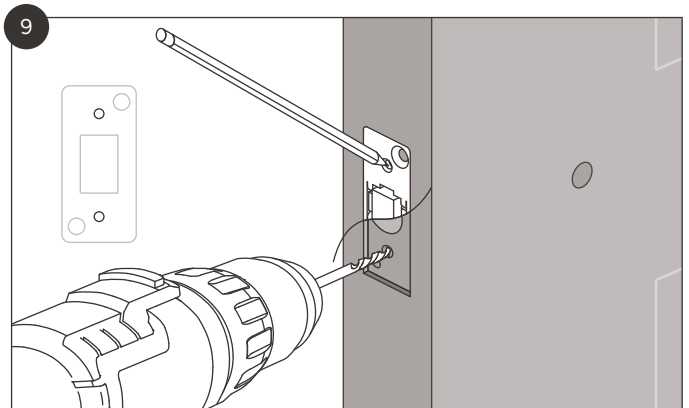
Latches only: make sure the tongue is facing the correct way, so the curved edge faces the door frame.



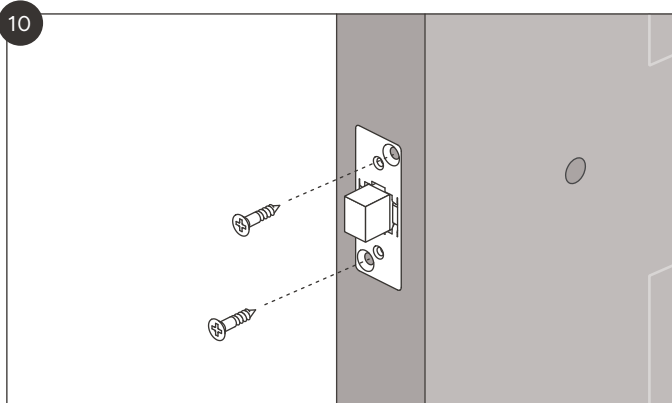
Locks only: make sure the Corston logo on the body is the right way up. This means the lock will turn in a conventional direction.



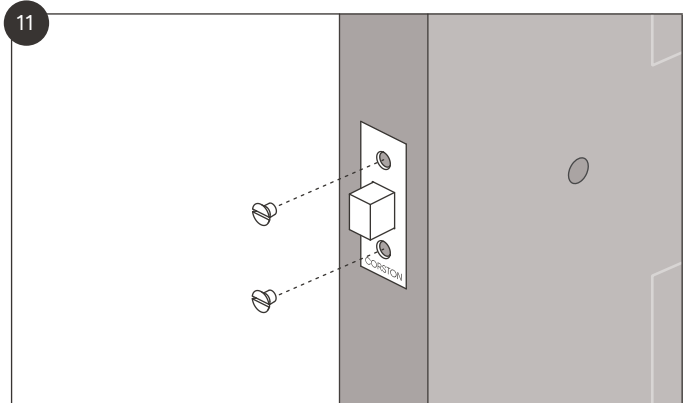
Mark and drill 2mm pilot holes for the outer screws.



Mark and drill 5mm holes, about 4mm deep, for each of the inner screws.

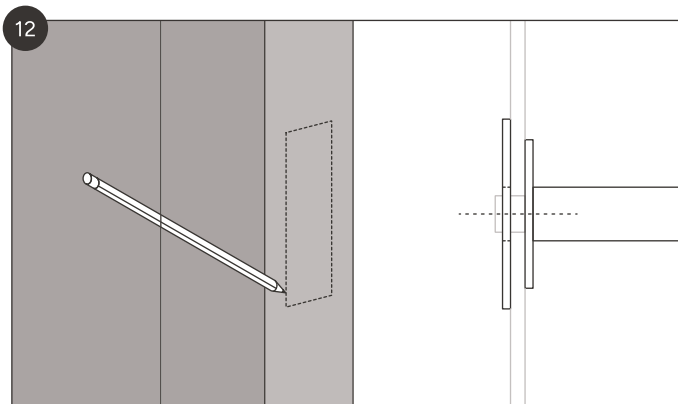


Use the crosshead wood screws to fix the mechanism into the door.

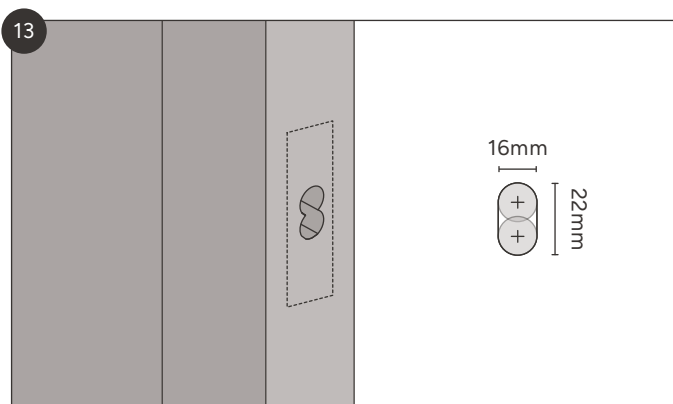


Use the flathead facing screws to attach the front plate to the mechanism.

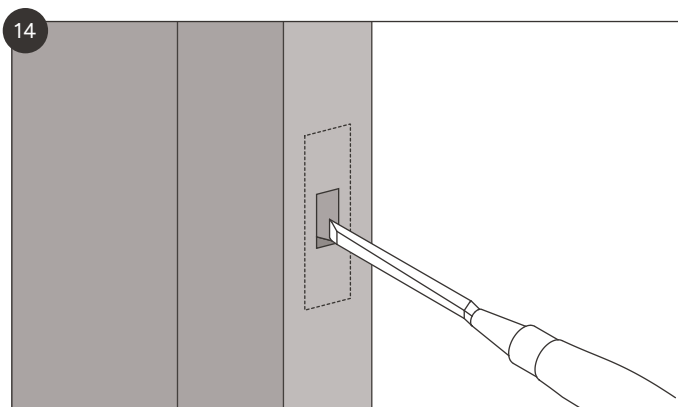
Tubular locks & latches instructions



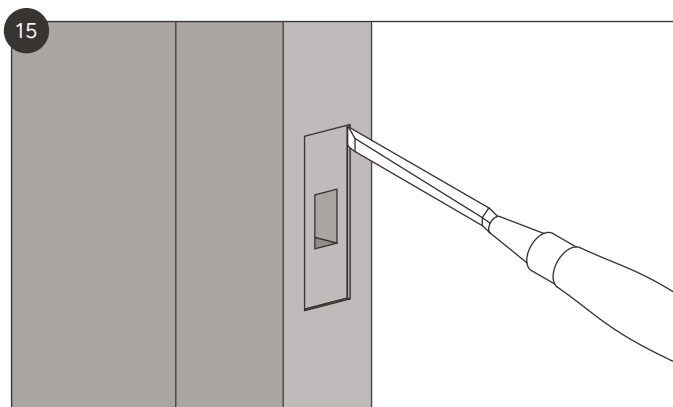
Mark out the position of the strike plate on the door frame.



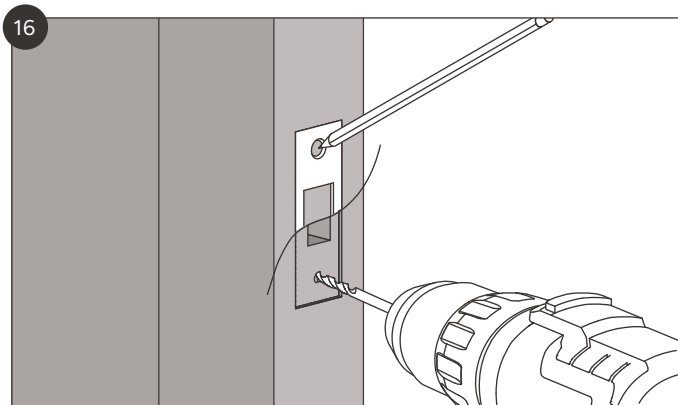
Drill out the majority of the strike plate hole.



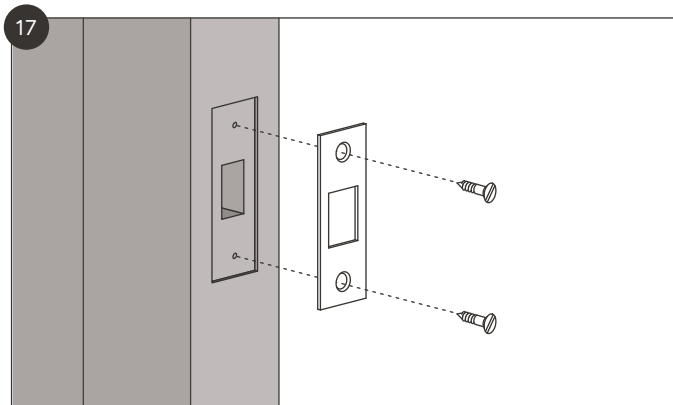
Chisel out the remainder of the hole and make square.



Chisel out the strike plate recess.



Mark and drill the strike plate screw pilot holes.



Screw the strike plate to the door frame.