

Engineering Specification

Job Name _____

Contractor _____

Job Location _____

Approval _____

Engineer _____

Contractor's P.O. No. _____

Approval _____

Representative _____

Tag _____

BV-600

Pit Drain with Backwater Valve

Specification

Watts BV-600 epoxy coated cast iron pit drain with backwater valve with bronze seat and flapper, secured grate, and no hub outlet.

Pipe Sizing		
Suffix	Description	
2	2"(51) Pipe Size	<input type="checkbox"/>
3	3"(76) Pipe Size	<input type="checkbox"/>
4	4"(102) Pipe Size	<input type="checkbox"/>
6	6"(152) Pipe Size	<input type="checkbox"/>

Options		
Suffix	Description	
-1	Nickel Bronze Grate & Frame	<input type="checkbox"/>
-6	Vandal Proof	<input type="checkbox"/>
-13	Galvanized	<input type="checkbox"/>
-T	Threaded Outlet	<input type="checkbox"/>

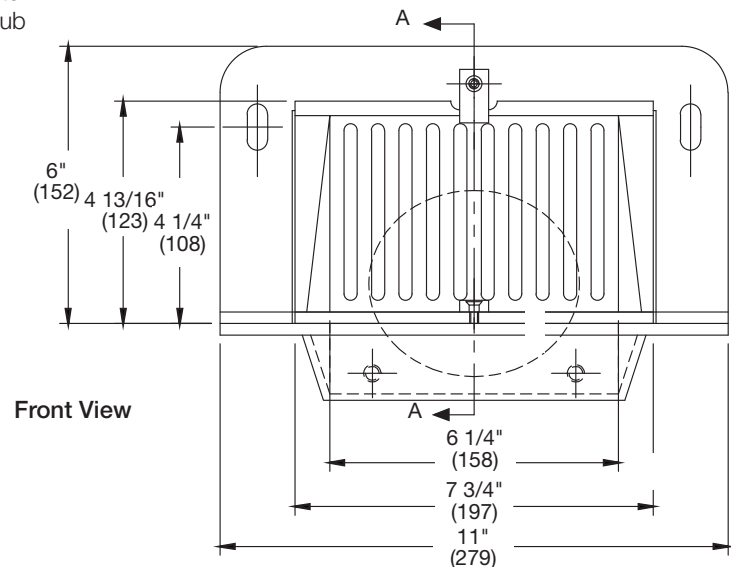
Pipe Size	No Hub (MJ)		Free Area Sq. In.
	A	B	
2"(51)	5 1/8"(130)	6 1/2"(165)	15
3"(76)	4 1/2"(114)	5 3/4"(146)	
4"(102)	4"(102)	5 1/8"(130)	
6"(152)	3 1/2"(90)	4 13/16"(122)	

Please refer to watts.com for BAA information on specific models.

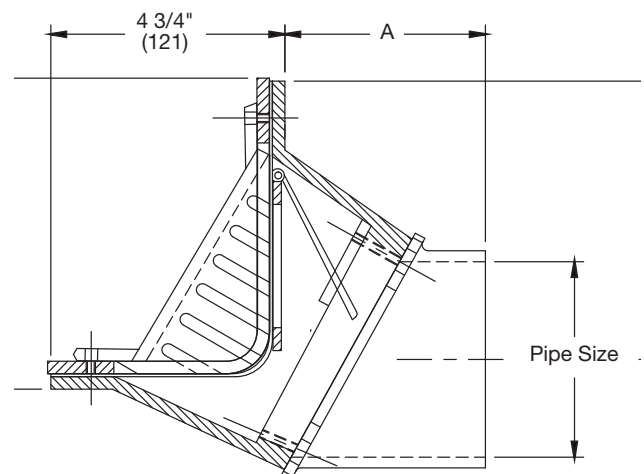
NOTICE

The information contained herein is not intended to replace the full product installation and safety information available or the experience of a trained product installer. You are required to thoroughly read all installation instructions and product safety information before beginning the installation of this product.

Watts product specifications in U.S. customary units and metric are approximate and are provided for reference only. For precise measurements, please contact Watts Technical Service. Watts reserves the right to change or modify product design, construction, specifications, or materials without prior notice and without incurring any obligation to make such changes and modifications on Watts products previously or subsequently sold.



Side View



USA: T: (800) 338-2581 • F: (828) 248-3929 • Watts.com

Canada: T: (888) 208-8927 • F: (905) 481-2316 • Watts.ca

Latin America: T: (52) 55-4122-0138 • Watts.com