

### Customer Service

We hope you never have the need, but if you do, our service is friendly. If you have any question, please contact us. We will response your inquiry within 24 hours.

Telephone:(725) 255-2966  
Email:support001@keepsmile.vip  
We will help you solve the problem!

### Troubleshooting

#### 1. Cannot connect to "Magic Lantern" app.

- Check if the lamp is powered on, try disconnecting and re-powering.
- Check if Bluetooth on the smartphone is enabled, or try connecting with another smartphone.
- Make sure the app is the latest version.
- When connecting for the first time, ensure the smartphone is near the lamp.

#### 2. Can multiple users control a single lamp at the same time use APP?

- Each lamp can only be connected to one APP account at a time.
- If multiple accounts want to use the one lamp, user A must disconnect on Magic Lantern APP. Then user B can connect and use it on the APP.

#### 3. The remote control does not work

- Check if the remote control battery has power
- Reset the remote control, then re-pair it.

#### Reset the remote:

Disconnect the power for 5-10 seconds, within 15 seconds after power-on, long press the "AUTO" button on the remote control until the light flashes 3 times, decoding is successful.

#### Re-pairing:

Disconnect the power for 5-10 seconds, within 15 seconds after power-on, long press the "AUTO" button on the remote control until the light flashes 3 times, Re-pairing is successful.

#### 4. Why the app need permissions for location, bluetooth, microphone, storage, camera, etc?

- Location permissions: Android system requires location to scan for bluetooth devices and connect. It's not "Magic Lantern" app needs the buyer's location information, it's the Android system that needs it. IOS system does not require location permissions.
- Bluetooth permissions: Allow bluetooth to connect to use the app.
- The recording, storage, and camera permissions are optional (Optionally close). They are only required when using some functions.

Storage: When using the music mode, need to read the music in the mobile phone.  
Microphone: When using the mic mode, you need to grab the surrounding sound.  
Camera: When uploading profile pictures.

- We do not record and save any buyer's location and other information. You can set all permissions to allow only while app in use.

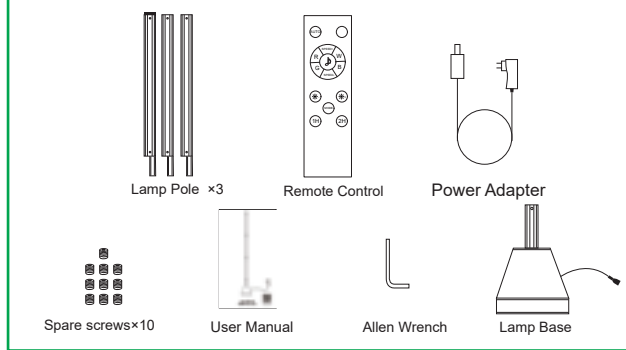
#### 6. Other issues.

Please call or email us, we will provide you with a satisfactory solution.

#### Packing List

Lamp Pole	3
Lamp Base	1
Power Adapter with Cable	1
Remote Control	1
User Manual	1
Allen Wrench	1
Spare screws	10

#### Check if all the parts are completely.



### Installation

#### Step1:

Check if all the parts are completely.  
Connect the power adapter to check if floor lamp can work normally.



#### Warning

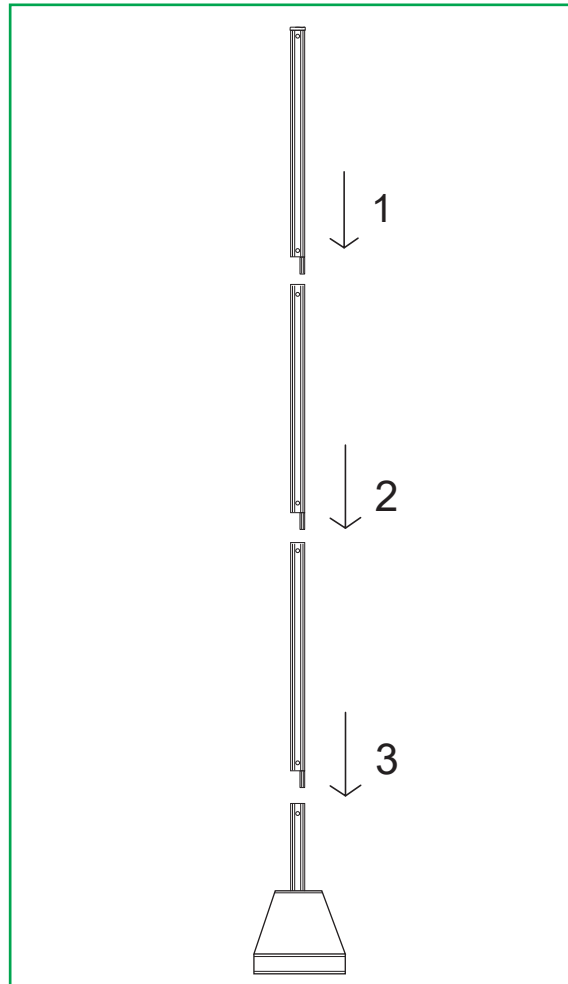
Be sure to test before installing. Any questions, please feel free to contact us by email or phone



Connect the wires on the pole with the power adapter.Plug in, to check if they can work normally.  
If the lamp does not light up after connecting to the power supply,please press the switch button on the base of the lamp.

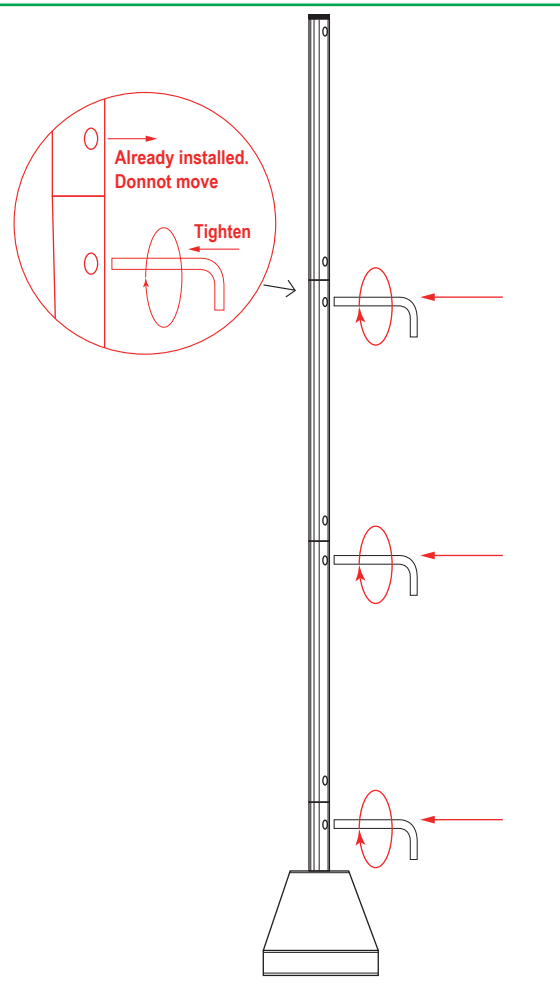
#### Step2:

Install the light tubes from bottom to top one by one.



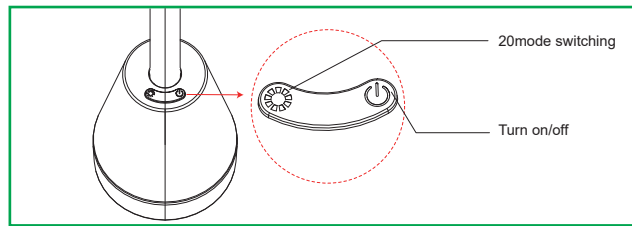
#### Step3:

Install the screws to fix the light pole.



### Control Manner

#### Control Button



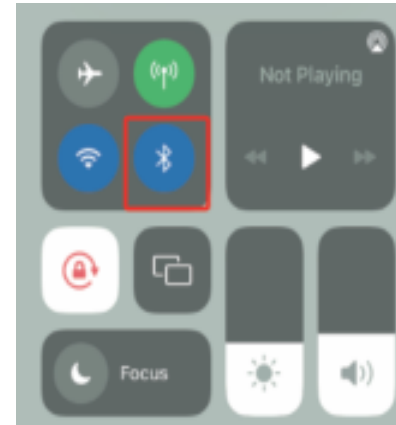
#### APP Control

##### Magic Lantern APP Control

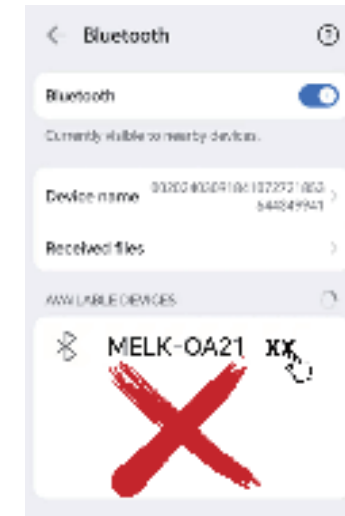
- Scan the below QR code or search "Magic Lantern" on Apple APP or Google play store, download and install it on your phone or tablet.



#### 2. Turn on Bluetooth on your phone.



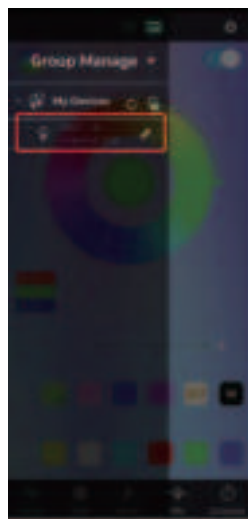
Please do not connect the device on the Bluetooth interface (the picture below is an error example).



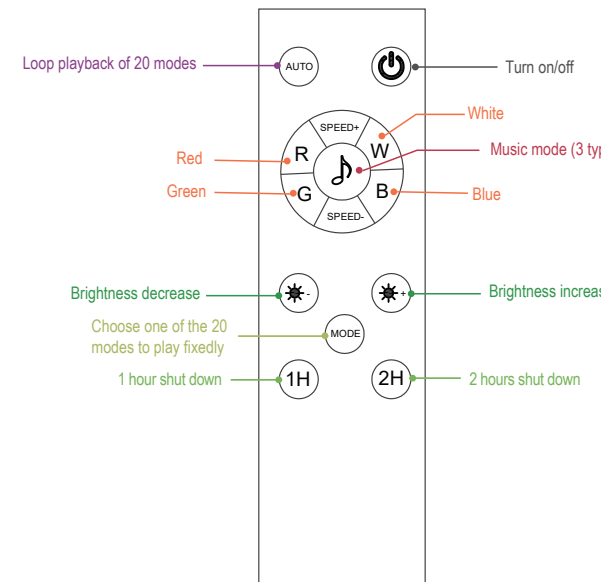
After turn on the Bluetooth, please open straight to the Magic Lantern app.Click the list icon in the upper left corner.



- mark means sucessfully connected.
- mark means Bluetooth unconnected, please tap this mark to make it connected



### 14 Keys RF Remote Control



#### Specification

Voltage	AC 100-240V,DC 12V
Wattage	16.8W
Colors	RGBIC
Control Method	APP/RF Remote/Button
Material	Aluminum Alloy
Weight(Pounds)	1.9 pounds
Product Size(Inch)	4.72*4.72*59 inch

### WARNING:

- Indoor use only.It is non-waterproof.
- Please use the packaged adapter to meet the working power requirement.
- Power off before installation, cleaning and die
- Please do not use it in humid environments or at high temperatures
- Please do not use a power supply higher than 12V in US.
- Please do not plug or unplug the power cord with wet hands, keep it in a dry environment.
- Please stop using it if there are any defective issues found in the product.

### FCC Compliance

This device complies with Part 15 of the FCC Rules. Operation is subject to the following two conditions:

- (1) This device may not cause harmful interference, and
- (2) this device must accept any interference received, including interference that may cause undesired operation.



Made in China

FCC Warning:

This equipment has been tested and found to comply with the limits for a Class B digital device, pursuant to part 15 of the FCC Rules. These limits are designed to provide reasonable protection against harmful interference in a residential installation. This equipment generates, uses and can radiate radio frequency energy and, if not installed and used in accordance with the instructions, may cause harmful interference to radio communications. However, there is no guarantee that interference will not occur in a particular installation. If this equipment does cause harmful interference to radio or television reception, which can be determined by turning the equipment off and on, the user is encouraged to try to correct the interference by one or more of the following measures:

- Reorient or relocate the receiving antenna.
- Increase the separation between the equipment and receiver.
- Connect the equipment into an outlet on a circuit different from that to which the receiver is connected.
- Consult the dealer or an experienced radio/TV technician for help.

Caution: Any changes or modifications to this device not explicitly approved by manufacturer could void your authority to operate this equipment.

This device complies with part 15 of the FCC Rules. Operation is subject to the following two conditions:

(1) This device may not cause harmful interference, and (2) this device must accept any interference received, including interference that may cause undesired operation.

This equipment complies with FCC radiation exposure limits set forth for an uncontrolled environment. This equipment should be installed and operated with minimum distance 0cm between the radiator and your body.