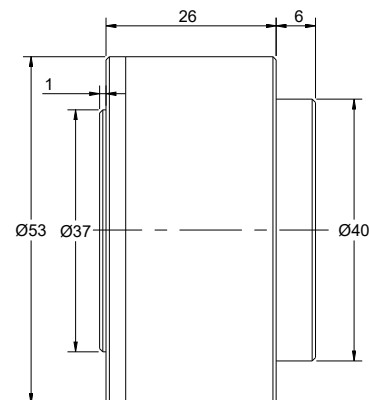
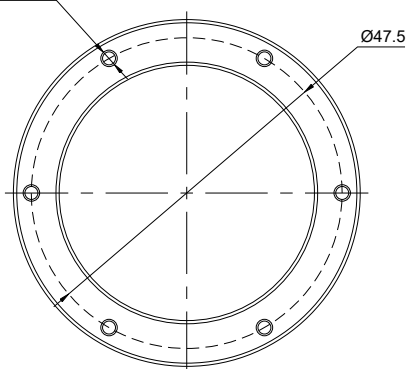
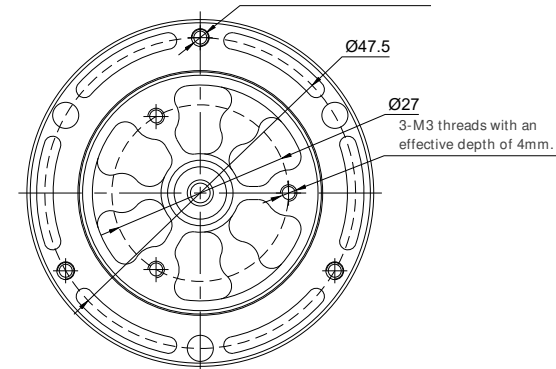


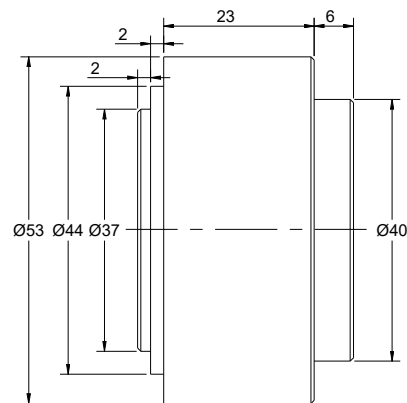
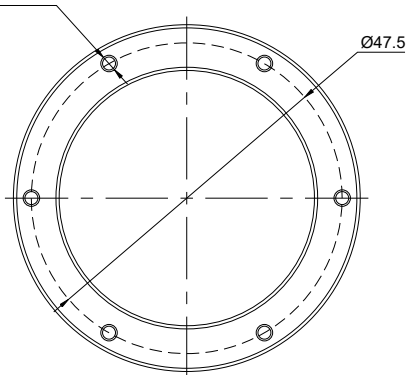
6-M2.5 threads with a depth of 3mm.
Screws should not be too long; otherwise, the motor may be damaged.



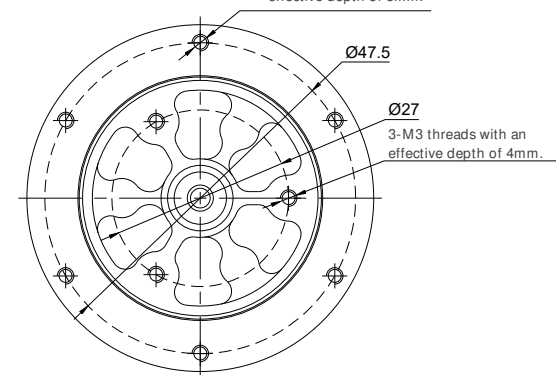
3-M2.5 threads with an effective depth of 5mm.



6-M2.5 threads with a depth of 3mm.
Screws should not be too long; otherwise, the motor may be damaged.



6-M2.5 threads with an effective depth of 5mm.



No Front Cover

The front cover serves to secure the bearings. The "no front cover" configuration is applicable when the motor mounting position can adequately secure the bearings, thereby reducing the installation height. This configuration is considered an unfinished structure until fully installed. Do not perform trial runs of the motor; otherwise, there is a risk of rotor ejection.