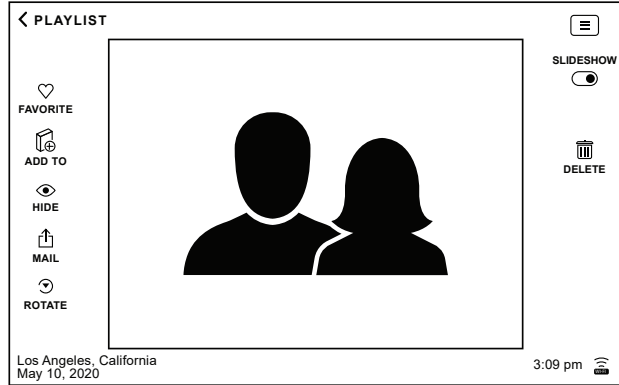


PhotoSpring Screen Flow and Basic Features Overview

For more detailed information, visit: [support.photospring.com](https://support.photospring.com)

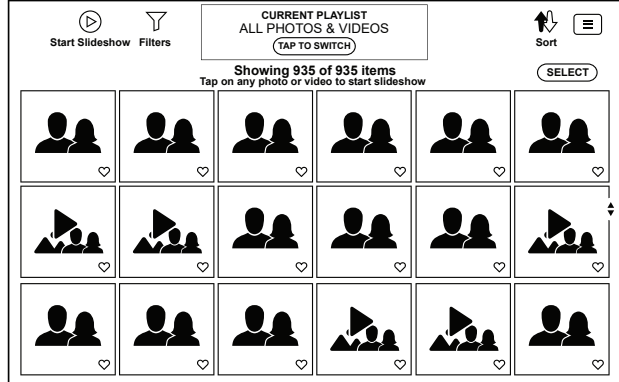
PhotoSpring will always default to slideshow. Tap to enter Photo Info screen.

Photo Info (enter from Slideshow)



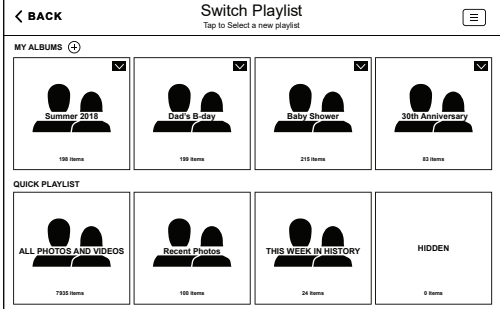
- Go to Playlist screen
- Tap photo to resume Slideshow
- Show Menu dropdown
- Swipe left/right change photo
- Email photos
- Pause Slideshow
- Edit photo information
- Apply action to photo
- Set clock and WiFi

Playlist (enter from Photo Info)

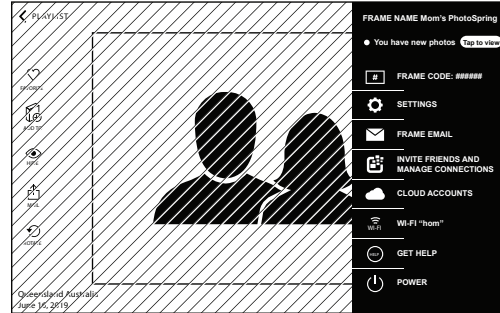


- Go to Albums screen
- Tap to Switch
- Go to Select Items screen
- SELECT
- Tap photo to start Slideshow
- Show Menu dropdown
- Scroll up and down
- Select Filters options
- Select Sort options

Albums (enter from Playlist)

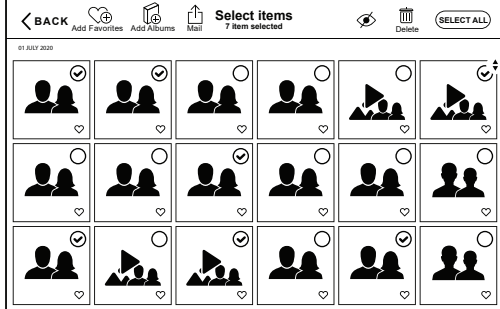


- Tap album to select as Playlist
- Show Menu dropdown
- Scroll page up and down
- Swipe left/right in each row
- Manage album options
- Add new album

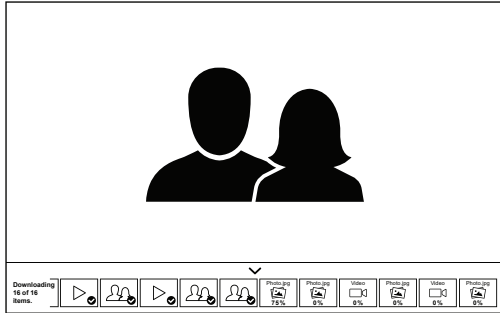


**MENU dropdown (from menu icon)**  
Select menu option or tap on shaded area to left to close menu.

Select Items (enter from Playlist)



- Select multiple items or Select All
- Apply action to selection
- Email photos
- Add to Favorites
- Add to Album (create new album)
- Hide or Delete



**Download Indicator (automatic)**  
Tap on download indicator to toggle indicator display style.

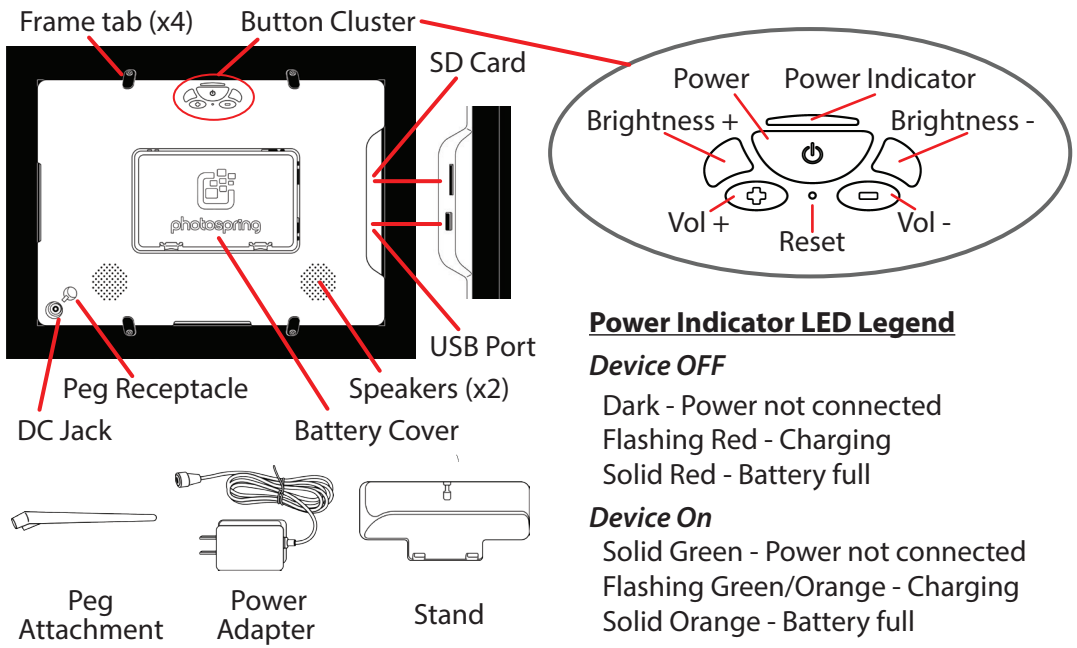
# Welcome to your PhotoSpring

Start enjoying all your photos and videos and rediscover the moments you've been missing

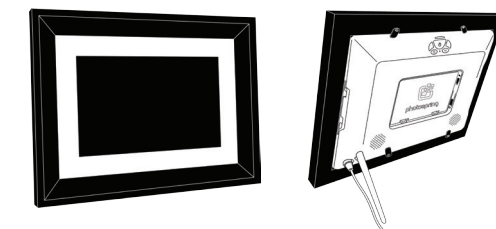
## PhotoSpring 10



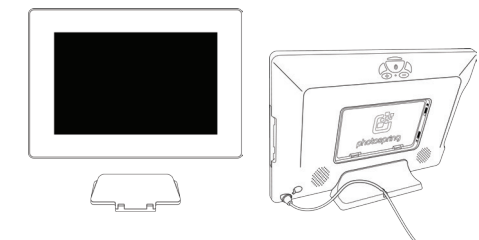
PhotoSpring 10 Features



Traditional Look with Frame  
- Connect Peg Attachment



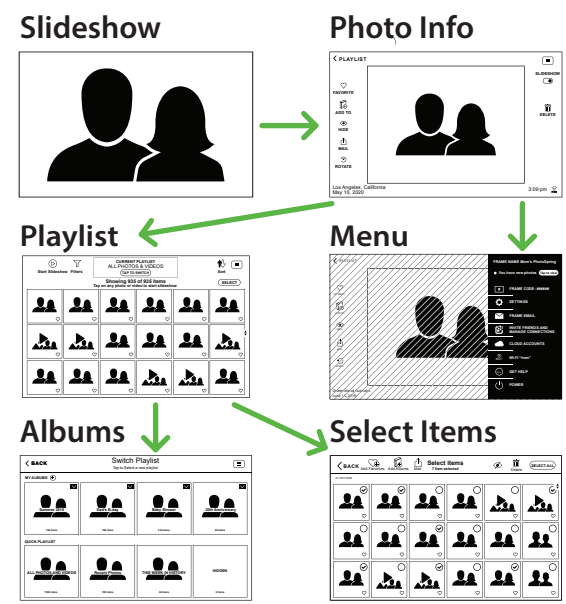
Modern Look on Stand  
- Unscrew Frame tabs and place in Stand



Setting up your PhotoSpring

- 1 Attach magnetic DC Jack, PhotoSpring turns on automatically
- 2 Tap on WELCOME and connect WiFi
- 3 Follow on-screen setup instructions
- 4 Create **Frame Email** or skip
- 5 Use **Smartphone App** or **Browser** sign-up at [my.photospring.com](http://my.photospring.com)
- 6 Enter Frame Code from device

PhotoSpring Screen Flow



Ways to Send Photos and Videos

- Frame Email**  
Create Frame Email to send by email (no account required)
  - Smartphone / Tablet App \***  
Use app to send directly from smartphone or tablet
  - Web Browser \***  
Send photos/videos from computer [my.photospring.com](http://my.photospring.com)
- \* Requires free account  
Sign-up at: [my.photospring.com](http://my.photospring.com)

Power and Battery Life

- ◆ Device turns on automatically when power is connected
- ◆ Short press power button to toggle sleep and wake
- ◆ Press power button 3 seconds and release for POWER OFF option
- ◆ Schedule Timer can be turned on from SETTINGS menu
- ◆ Battery life of 3-6 hours depending on screen brightness
- ◆ Charge empty battery, 5 hr to full

Have questions? Need help?  
We're here for you.

For FAQ and information please visit website:

[support.photospring.com](http://support.photospring.com)

or email us with specific questions:

[support@photospring.com](mailto:support@photospring.com)



This equipment has been tested and found to comply with the limits for a Class B digital device, pursuant to part 15 of the FCC Rules. These limits are designed to provide reasonable protection against harmful interference in a residential installation. This equipment generates, uses and can radiate radio frequency energy and, if not installed and used in accordance with the instructions, may cause harmful interference to radio communications. However, there is no guarantee that interference will not occur in a particular installation. If this equipment does cause harmful interference to radio or television reception, which can be determined by turning the equipment off and on, the user is encouraged to try to correct the interference by one or more of the following measures:

- Reorient or relocate the receiving antenna.
- Increase the separation between the equipment and receiver.
- Connect the equipment into an outlet on a circuit different from that to which the receiver is connected.
- Consult the dealer or an experienced radio/TV technician for help.

Caution: Any changes or modifications to this device not explicitly approved by manufacturer could void your authority to operate this equipment.

This device complies with part 15 of the FCC Rules. Operation is subject to the following two conditions: (1) This device may not cause harmful interference, and (2) this device must accept any interference received, including interference that may cause undesired operation.

The device has been evaluated to meet general RF exposure requirement.

The device can be used in portable exposure condition without restriction.