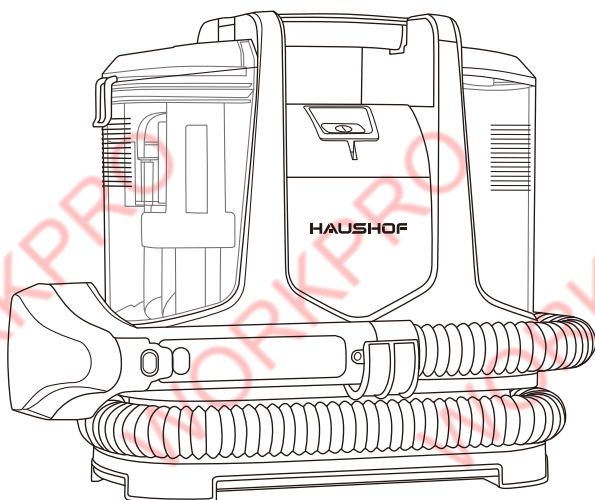


HH22050A

# HAUSHOF

## CARPET SPOT CLEANER OPERATION MANUAL



Thank you for buying a HAUSHOF CARPET SPOT CLEANER. It has been engineered and manufactured to HAUSHOF's high standard for dependability, ease of operation, and operator safety. When properly cared for, it will give you years of rugged, trouble-free performance.



**WARNING:** To reduce the risk of injury, the user must read and understand the operator's manual before using this products.

**SAVE THIS MANUAL FOR FUTURE REFERENCE**



Distributed by :  
Hangzhou GreatStar Industrial Co., Ltd.  
No.35 Jiuhuan Road, Jiubao Town,  
Hangzhou 310019, China  
[www.greatstartools.com](http://www.greatstartools.com)  
MADE IN CHINA

## Attentions

### IMPORTANT SAFETY INSTRUCTIONS SAVE THESE INSTRUCTIONS

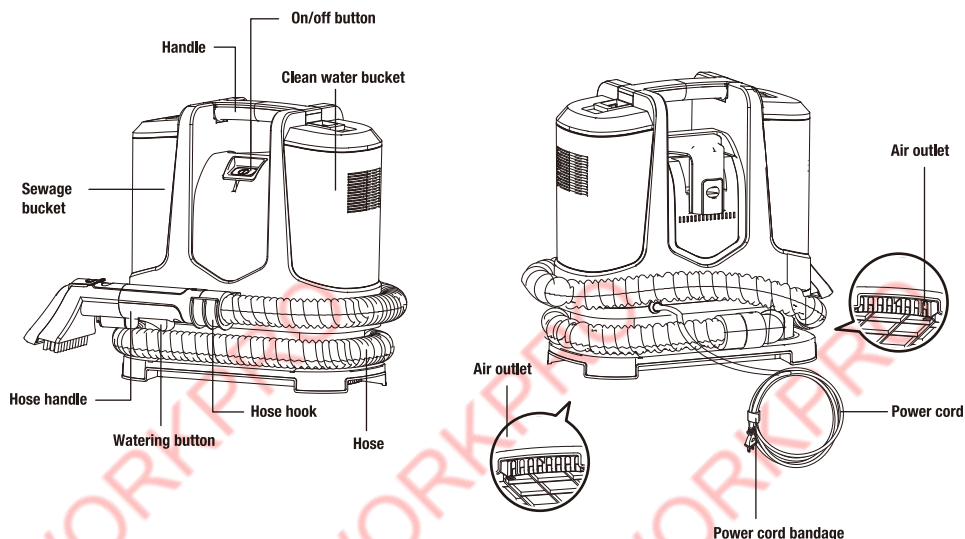
READ ALL SAFETY WARNINGS AND INSTRUCTIONS BEFORE USING THIS PRODUCT.

**WARNING:** When using an electrical product, basic precautions should always be followed to avoid electric shock, fire, and/or serious injury, including the following:

- This appliance is intended for domestic household use only and should not be used for any other purpose or in any other application, such as for non-domestic use or in a commercial environment.
- If the supply cord is damaged, it must be replaced by the manufacturer, its service agent or similarly qualified persons in order to avoid a hazard.
- This appliance can be used by persons with reduced physical, sensory or mental capabilities or lack of experience and knowledge if they have been given supervision or instruction concerning use of the appliance in a safe way and understand the hazards involved.
- Children shall not play with the appliance.
- The plug must be removed from the socket outlet before cleaning or maintaining the appliance.
- Regarding the detailed instructions for the method and frequency of cleaning and the precautions during user maintenance, refer to the section "CLEANING AND MAINTENANCE".
- Following objects are strictly banned, otherwise the vacuum cleaner will be damaged or fire calamity will be caused, which bring such accidents as human body injuries:
  - Don't pick up large or sharp broken objects such as glasses.
  - Don't pick up harming or erodent liquids (solvent, corrosive, detergent...).
  - Don't pick up inflammable or explosive substance such as gasoline or alcohol.
  - Don't pick up/ vacuum burning or glowing objects (cigarettes, matches, hot ashes).
  - The liquid or steam must not be directed towards equipment containing electrical components, such as the interior of ovens.
- The filling aperture must not be opened during use.
- The appliance has to be unplugged after use and before carrying out user maintenance on the appliance.
- The plug must be removed from the socket-outlet before cleaning or maintaining the appliance.
- The appliance shall not be left unattended while it is connected to the supply mains.
- The appliance is not to be used if it has been dropped, if there are visible signs of damage or if it is leaking.
- Keep the appliance out of reach of children when it is energized or cooling down.
- Do not leave the appliance unattended when it is switched on.
- Do not use the appliance for any purpose other than those described in this instruction manual.
- Always disconnect the appliance from the power supply if it is left unattended and before assembling, disassembling or cleaning.
- Do not unplug by pulling on cord. To unplug, grasp the plug, not the cord.
- Use only original accessories recommended by the
- Do not use outdoors.
- Children should be supervised to ensure that they do not play with the appliance.
- Do not use with any opening blocked; keep free of dust, lint, hair, and anything that may reduce air flow.
- Do not use the appliance to pick up the following items :
  - Dry dust
  - Lots of rubbish
  - Big plastic bags
  - Large quantities of powder
  - Metal such as needles, pins, etc.
  - Large quantities of sands and pebbles

## Parts Name

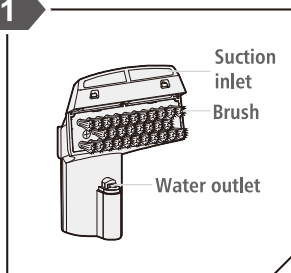
### ■ Body



120V~ 60Hz 3.0A 9Kpa

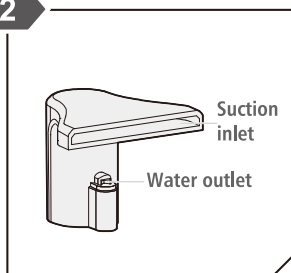
### ■ Accessories

1



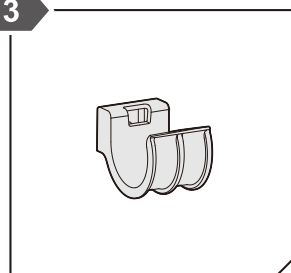
Water sucker with brush, for carpet, etc.

2



Right-angled water sucker, for cracks and the back of the chair.

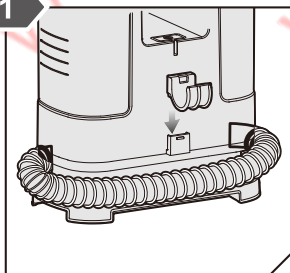
3



Hose hook.

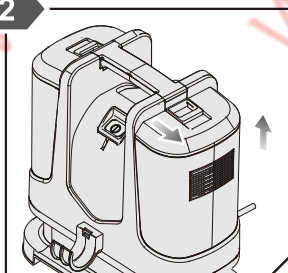
## Preparation

1



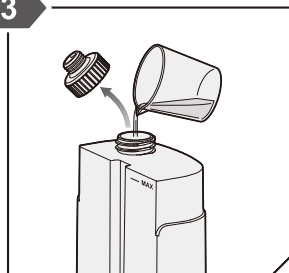
Insert the hose hook into the machine.

2



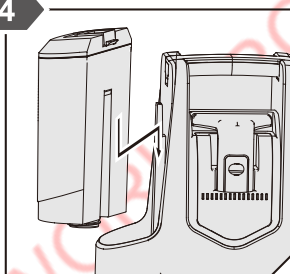
Remove the clean water bucket from the body.

3



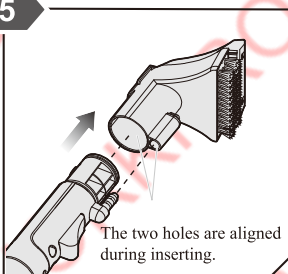
Turning the tank upside down, then open the screw cap and fill with clean water. The maximum water capacity is about 1L.

4



Install the clean water bucket into the body.

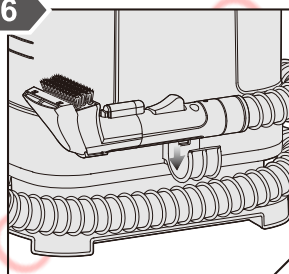
5



The two holes are aligned during inserting.

Insert the handle into the water sucker.

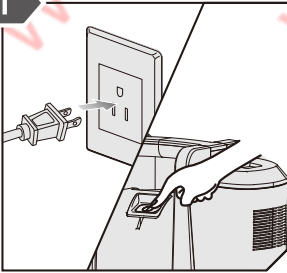
6



Fix the hose and power cord before handling.

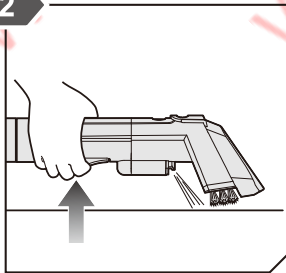
## Instructions

1



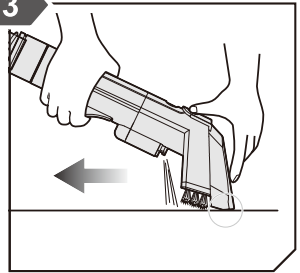
Plug it in, turn on the power (start).

2



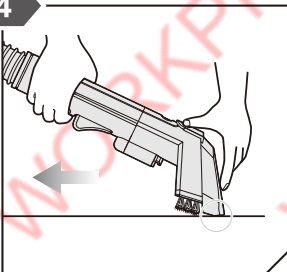
Press the watering button to spray clean water. Spray the stain with clean water to let it surface. Do not spray continuously at the same spot. After spraying, absorb the water, so as not to cause mildew and odor.

3



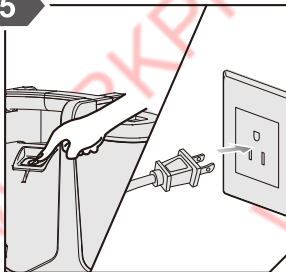
Absorb water, spray clean water while absorbing sewage. Press the water suction inlet on the stain, bring the water and dirt to the front and suck them.

4



Stop spraying, and absorb the sewage. After using the cloth on which water is easily retained, please blow dry or air dry.

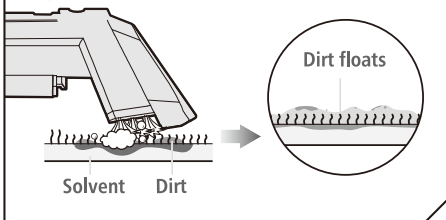
5



Turn off the power (stop), unplug it. Pour away clean water and sewage, and clean the sewage bucket.

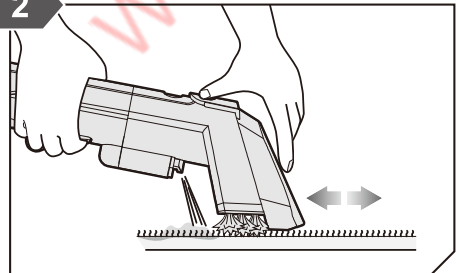
## For stubborn dirt

1




Apply the cleaning solvent to the carpet and rub the dirt with a brush to lift it up. For the amount and usage of the cleaning solvent, please read the manual carefully and use it correctly.

2



Absorb the dirt and do not leave any solvent.

3

	<p>✓ <b>Recommended Detergent</b></p>	<p>✗ <b>Not appropriate</b></p>
	<ul style="list-style-type: none"> <li>• Strong alkaline ionized water</li> <li>• Baking soda</li> <li>• Citric acid</li> <li>• Hypochlorous acid</li> <li>• Weak acid electrolytic water Such as detergent producing less foam</li> </ul>	<ul style="list-style-type: none"> <li>• Neutral detergent for kitchen use</li> <li>• Strongly alkaline detergent</li> <li>• Strongly acidic detergent</li> </ul> <p>When using a detergent with a lot of foam, the foam might get inside the cleaner.</p>

Detergent

### Remark

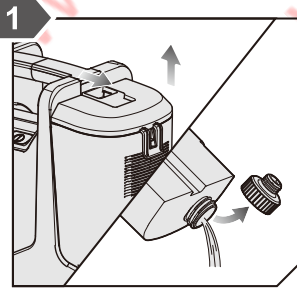
Do confirm that wash solvent does not cause damage to carpet before use.  
 When using detergent, first test it on the edge of the fabric being cleaned to make sure that there is no discoloration.  
 Do not use diluent, aniline, chloroform, and flammable solvents.  
 Do not spray any liquids such as insecticides, hair care products, or lubricating oil.  
 Do not use the product to vacuum flammable or combustible substances.  
 (such as kerosene, gasoline, thinner, copy product toner, etc.)  
 Do not use the product to vacuum oil, smoke or steam.  
 Do not use the product to vacuum dry dust.  
 Do not operate this unit near combustible substances such as lit cigarettes or incense sticks, doing so may increase the risk of fire.  
 Only water (clean tap or recommended Detergent) that is 40°C or cooler should be put into the clean water tank.

### ⚠ Attention

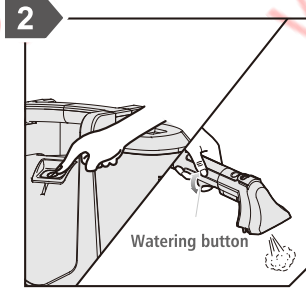
- Do not put the cleaning solvent in the clean water bucket, make sure the solvent is not harmful to the carpet before use.
- For the amount and usage of the cleaning solvent, please read the manual carefully and use it correctly.
- Do not use diluents, aniline, chloroform and flammable solvents.

## Cleaning and Maintenance

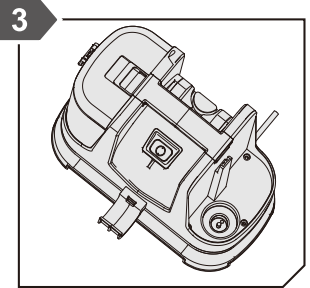
### Cleaning of bucket



Take out the clean water bucket in the direction of arrow, unscrew the screw cap and pour away the remaining water.

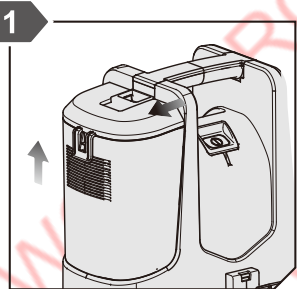


Install the empty bucket and then turn on the power again, press the watering button to remove the remaining water from the machine.

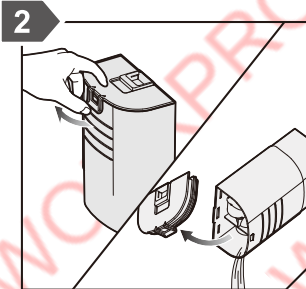


Tilt the machine and pour away the remaining water at the bottom.

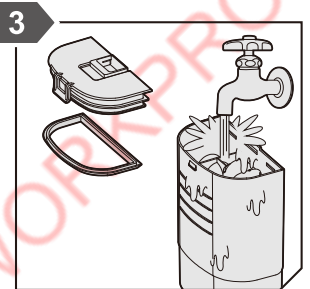
### Cleaning of sewage



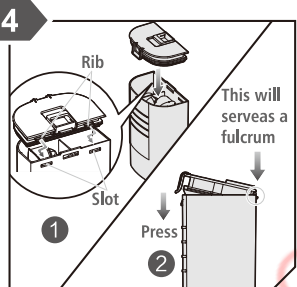
When the sewage reaches the maximum water level, stop working and turn off the power. Remove the sewage bucket in the direction of arrow.



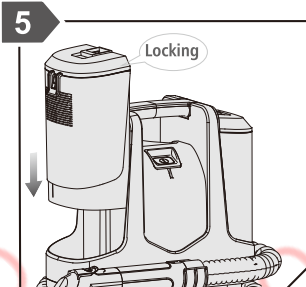
Open the upper cover of the sewage bucket and pour away the sewage. Do not tilt or shake the sewage bucket when carrying it; otherwise, the sewage will outflow easily.



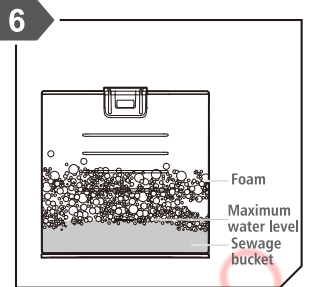
Clean the bucket, upper cover and sealing strip. Clean the sewage bucket in time after use, so as not to cause bacteria and smell.



Install the sealing ring, cover and fasten the sewage bucket.

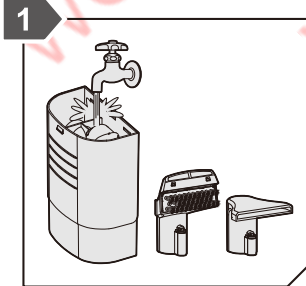


Buckle the sewage bucket into the body. Lock the sewage bucket, do not shake; otherwise, it is easy to leak and affect the cleaning

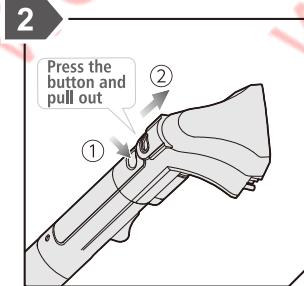


Stop using when the water in the sewage bucket exceeds the maximum water level, clean the sewage bucket; otherwise, the water will flow into the machine.

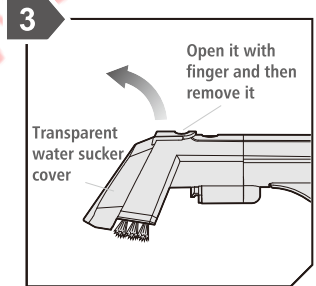
## Cleaning and Maintenance



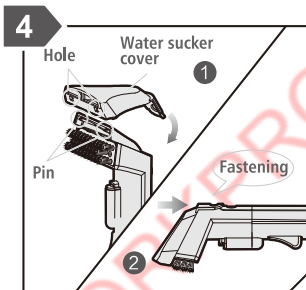
After use every time, remove them from the body, rinse thoroughly with water and air dry.



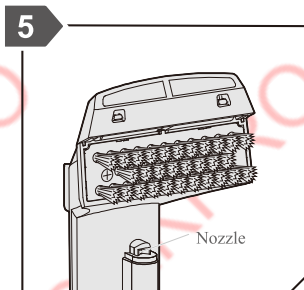
Disassembly of water sucker.



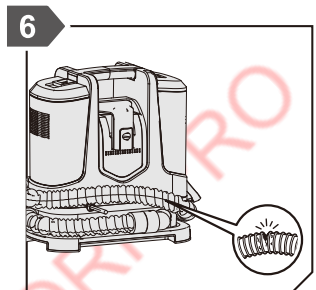
Disassembly of water sucker cover.



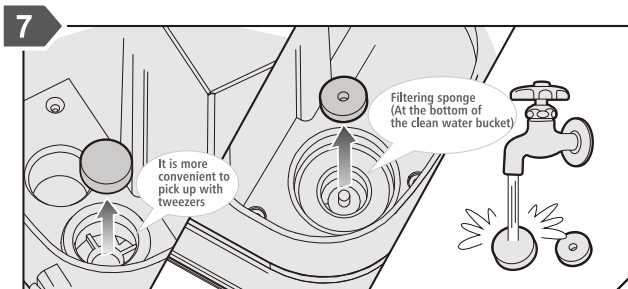
Installation of water sucker cover:  
1. the pin and hole fit well  
2. Press in until clicking sound to make sure the installation is in place



When cleaning the water sucker, empty the nozzle if it is blocked.



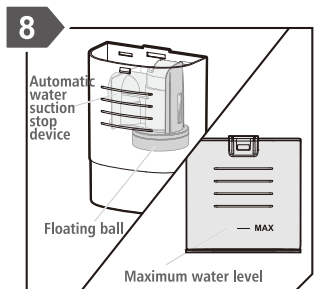
Check the hose for breakage and leakage.



Rinse the inlet air sponge and filtering sponge after use, and replace them if they are damaged.

### ⚠ Attention

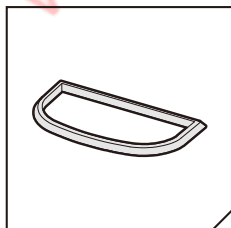
- Stop running and unplug it before maintenance.
- Do not use the detergent, diluent, benzene and other chemical agents to clean the machine.
- Do not water the machine to avoid electric shock.



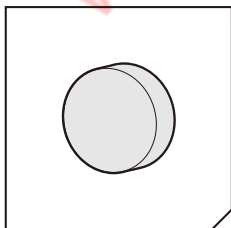
Pour away the sewage before it exceeds the maximum water level. If the machine continues to be used after the sewage exceeds the maximum water level, the floating ball will work and the suction will stop. When the water flows into the machine, turn off the machine and clear away the water inside the machine, pipe and bucket.

## Consumables, Fault and Handling

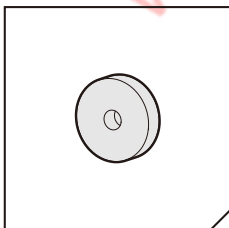
The consumables can be removed and replaced when damaged or lost. Be sure to install and use



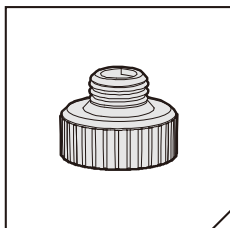
Seal ring for upper cover



Inlet air sponge



Filtering sponge



Screw cap

In the event of exceptions in use, read this manual carefully and confirm the following points before repair.

Status	Fault cause analysis	Handling
The machine does not work after the switch is turned on	<ul style="list-style-type: none"> <li>• The plug is not properly connected and loose, resulting in poor contact.</li> <li>• The internal line or power cord is broken.</li> <li>• The machine set overheats and the protective device operates</li> </ul>	<p>Turn off the power and plug it again. Call the repair telephone. Refer to the instructions for protective device.</p>
When the watering button is pressed, there is no water or little water	<ul style="list-style-type: none"> <li>• The nozzle is blocked.</li> <li>• The handle or pump is damaged.</li> </ul>	<p>Remove the water sucker and rinse the nozzle with clean water. Call the repair telephone.</p>
There is no dust collection or the suction is very weak	<ul style="list-style-type: none"> <li>• The power switch is not turned on.</li> <li>• The sewage bucket is full, causing the floating ball to work.</li> <li>• The hose is abnormal.</li> <li>• The sewage bucket is not installed in place.</li> <li>• The inlet air sponge is blocked</li> </ul>	<p>Turn on the power switch. Clean up the sewage and use it again. Check the hose for cracks, breaks and clogs. Install the sewage bucket properly. Clean or replace the sponge.</p>

## Environment Friendly Disposal

### Disposal of the Appliance



This product has been marked with a symbol relating to removing electric and electronic waste.

This means that this product shall not be discarded with household waste but that it shall be returned to a collection system.

It will then be recycled or dismantled in order to reduce the impact on the environment. Electric and electronic equipment can be hazardous for the environment and for human health since they contain hazardous substances.

### Disposal of the Packaging



The packaging consists of cardboard and correspondingly marked plastics that can be recycled.

Make these materials available for recycling.