

## Xmate CCTV User Manual

### Mobile App download

Search 'Neye3c' in Google Playstore or App Store. Scan the App QR code.



### IP Camera Installation Cautions

- 1.Please check the power supply voltage before installation. Format the TF card when using this product for the first time.
- 2.Please make sure the SSID & password are only English letters and number.
- 3.This product does not support 5G signal for the time being. Please re-connect to 2.4G signal to configure.
- 4.Keep the camera close to the router for configuration.

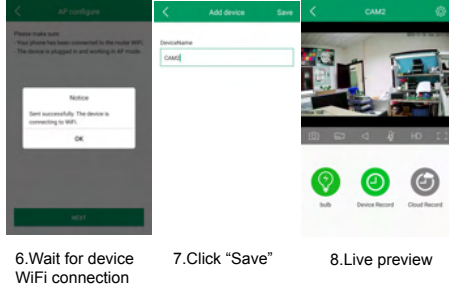
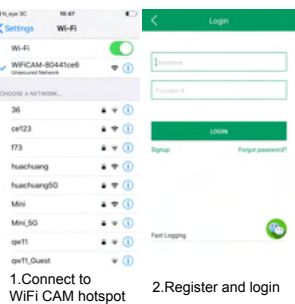
This manual is for reference only and the ultimate interpretation belongs to the manufacture. Products are subject to update without prior notice.

### Hotspot Connection (Android)

#### Installation Guide:

Power on, and make sure the indicator light is on. After the system startup is completed and hear the voice prompt 'Entering the AP configuration, please configure WiFi'. Then you can refer to the instructions.

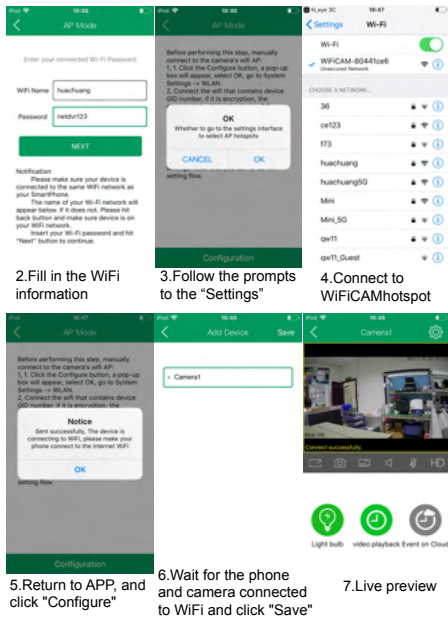
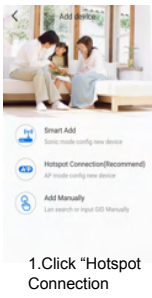
Note: If there is no voice prompt, please long press the 'Reset' button and wait for the voice prompts.



### Hotspot Connection (IOS)

#### Installation Guide:

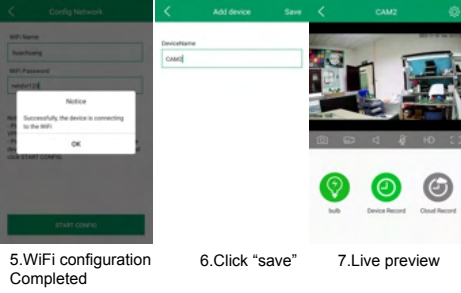
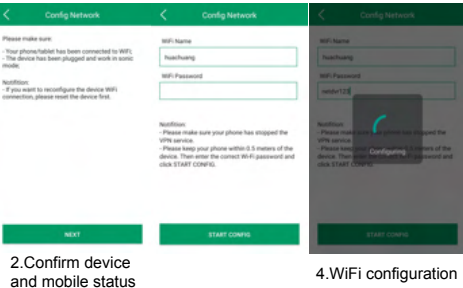
Power on, and make sure indicator light is on. After the system set up is completed and you hear a voice prompt 'Entering the AP configuration, please configure Wi-Fi. Then refer to the instruction. Note: If there is no voice prompt, please long press the 'reset' button and wait for the voice prompt.



### Smart Add

#### Installation Guide:

Power on, and make sure indicator light is on. After the system set up is completed and you hear a voice prompt 'Entering the AP configuration, please configure Wi-Fi. Then refer to the instruction. Note: If there is no voice prompt, please long press the 'reset' button and wait for the voice prompt.



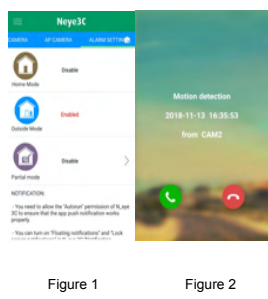
### Early Warning Introduction:

If someone enters the monitoring area, camera judges by the humanoid detection algorithm, turn on the speaker voice warning and white light output to the external alarm device and push to App. PIR Infrared: Turn on PIR human body detection. Motion Detection: Turn on motion detection. Sensitivity: Motion detection sensitivity filter alert source by human form. Detects human form and resolve false positives.

Note: Click on 'setting' icon to configure alarm setting.

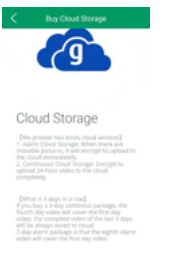
### App Receiving Alarm Introduction:

Your mobile device will receive an alarm message after the device alarms. And the live video can be played immediately when the user clicks on the call. 1. Set to receive alarm in the App alarm settings. (Figure 1) 2. When the device sends an alarm, the mobile device receives the alarm. (Figure 2) 3. Click on the answer button and enter the live preview.



### Cloud Storage Introduction:

After the cloud storage is activated, cloud recording can be performed. 1. Click 'cloud service' on preview interface and enter cloud storage. 2. Buy the storage plan, cloud storage service can be used after successful payment. Note: Please enable camera warning function for using alarm cloud storage.



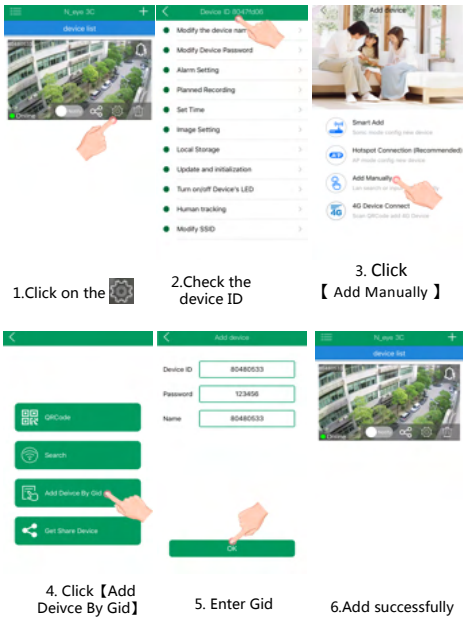
### Cloud Storage Playback Introduction:

Check the cloud recording data of the device. 1. Click on 'cloud service' on the preview interface. 2. Select the date and time to check record. 3. You can also check and renew the cloud storage plan on this page.

### Playback Introduction:

Check the recording data in SD card remotely. 1. Click on 'playback' on the preview interface. 2. Select the date and time to check record. The color in the progress bar is as follows: Green: Planned recording Orange: Alarm recording White: No recording The color in the progress bar is as follows: Green: Planned recording Orange: Alarm recording

### Add the device to the second phone



### Add the device to Windows PC /Laptops

Please visit to our official Xmate website <http://xmate.in> to download the software or use the below link to direct download the PC installation SW. <http://xmate.in/software-installation-guide>

<http://xmate.in/software-installation-guide>



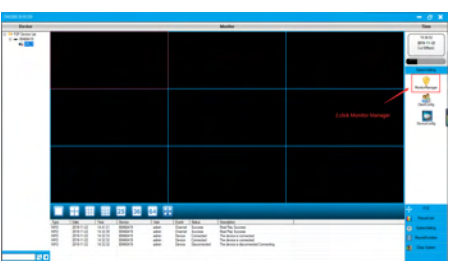
### SW installation guide in (Windows PC)

1. Please download & install the SW on your PC or laptop.
2. After successful installation please double click on the Shortcut "CMS2000" created on your Screen

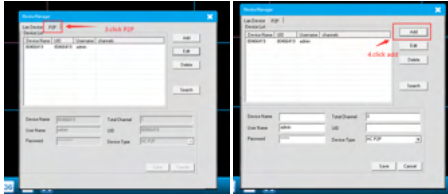
### 3. Go to system settings



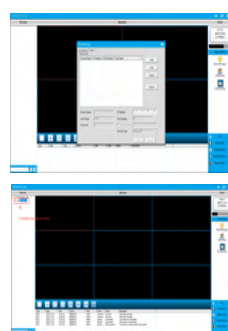
### 4. Go to monitor manager



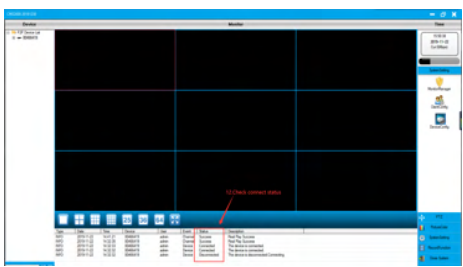
### 5. Click P2P



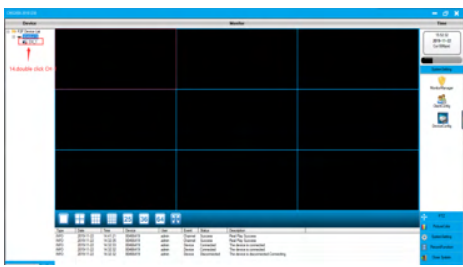
7. Input Device Name (same as UID no)
8. Input device channel as "1"
9. Input UID no (same as ID no of your phone)
10. Input password (Default password is 12345678)
11. Click "save" to save the details.
12. Close the window
13. Double click on Device Name as marked



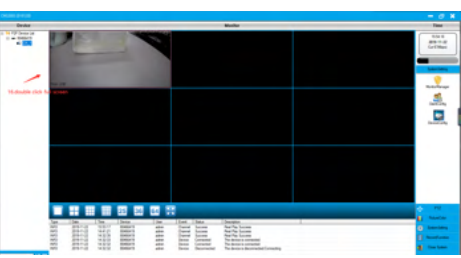
### 14. Check the connection status it should show connected



15. Now again double click the device name.
16. Double click the CH-1
17. The connection will get succeed



### 18. After successful connection double click the on Video to get in full screen.



Note: For more details about the PC connection with camera & information please visit at: <http://xmate.in/software-installation-guide>

Disclaimer: The colors and specifications shown/mentioned in the user manual may differ from the actual product. Images shown are for representation purpose only. Other product logos and company names mentioned herein may be trademarks or trade names of their respective owners.



CCTV Camera

Instruction Manual