

Installation Guide for SYRC8812H Altima Radio

If you have any questions, please contact us for help.

Content:

1. Installation Video -----	1
2. Check Your Factory Radio -----	2
3. How to connect factory backup camera -----	6
4. Radio Wiring Diagram -----	7
5. TS10 Head Unit FAQs -----	8

1. Installation Video

#1 Video: remove the factory car radio

https://www.youtube.com/watch?v=YGC_qoAmibk

#2 Video: Set up canbus option

<https://www.youtube.com/watch?v=PKbGqFFcCac&t=33s>

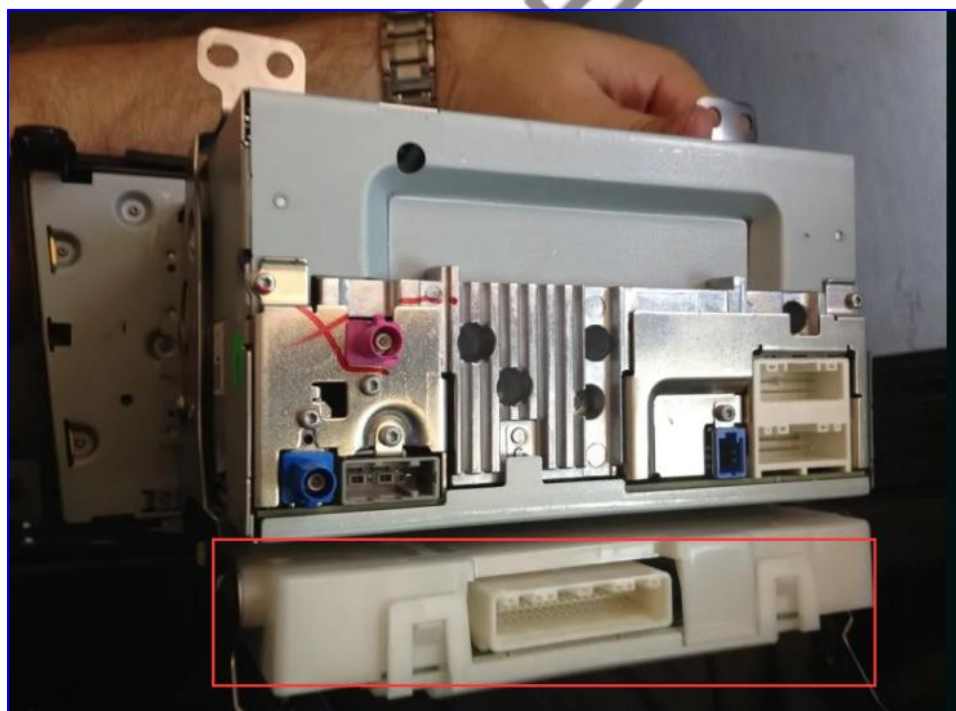
#3 Video: Use wireless carplay

<https://www.youtube.com/watch?v=fNSAkyBsCSw&t=5s>

Note: 2013-2018 Altima has a similar white box under the Navigation radio.

It's called the A/C auto control amp. You'll need it for the Air Conditioner.

So you need to put it back in. And then connect the factory A/C connector back in.



2. Check Your Factory Radio

1. **Model A:** The Nissan Altima radio is without a screen, the CAN011-R harness is correct for your car.

Model Number: SW5227/SYRC8812

Model A: 2013-2015 Nissan Altima, Original Radio without Screen

Compatibility with Original functionality: Bose Amplifier, Backup Camera, USB Cable, Air Condition Climate Controls
Proper Wiring Harness: CAN011-R (Included)



USB Adapter





2013-2015 AC Air Vent



Fit

2016-2018 AC Air Vent



Not Fit

2. **Model B:** The Nissan Altima radio is with a 4.3” screen, the CAN011-R harness is correct for your car.

Model Number: SW5227/SYRC8812

Model B: 2013-2015 Nissan Altima
Original Radio with 4.3-inch Screen

Compatibility with Original functionality: Bose Amplifier,
 Backup Camera, USB Cable, Air Condition Climate Controls
 Proper Wiring Harness: CAN011-R (Included)






2013-2015 AC Air Vent



Fit



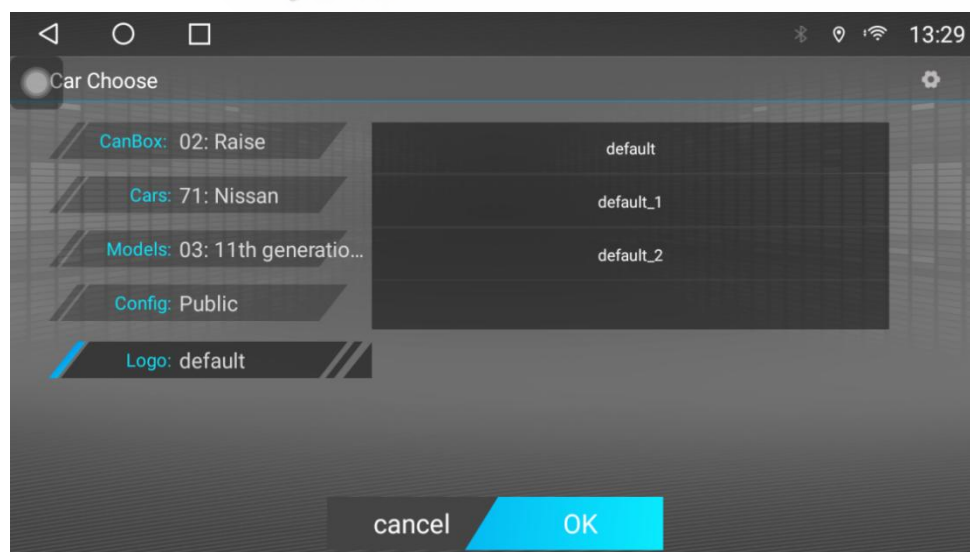
2016-2018 AC Air Vent



Not Fit

3. Canbus option of CAN011-R harness

- CANbus brand: **Raise**
- Canbus option: Raise – 71: Nissan – 03: 11th Tenna (2013) – Public.



4. Connect the AMP CONT line of CAN011-R to get sound

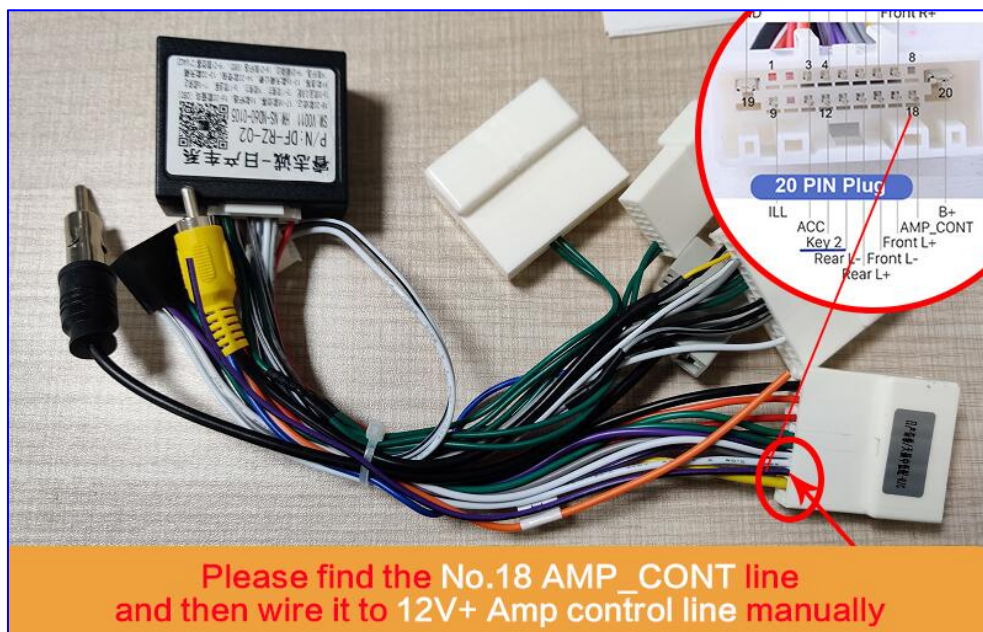
Q: Problem:

The car radio has no sound after you connected CAN011-R harness.

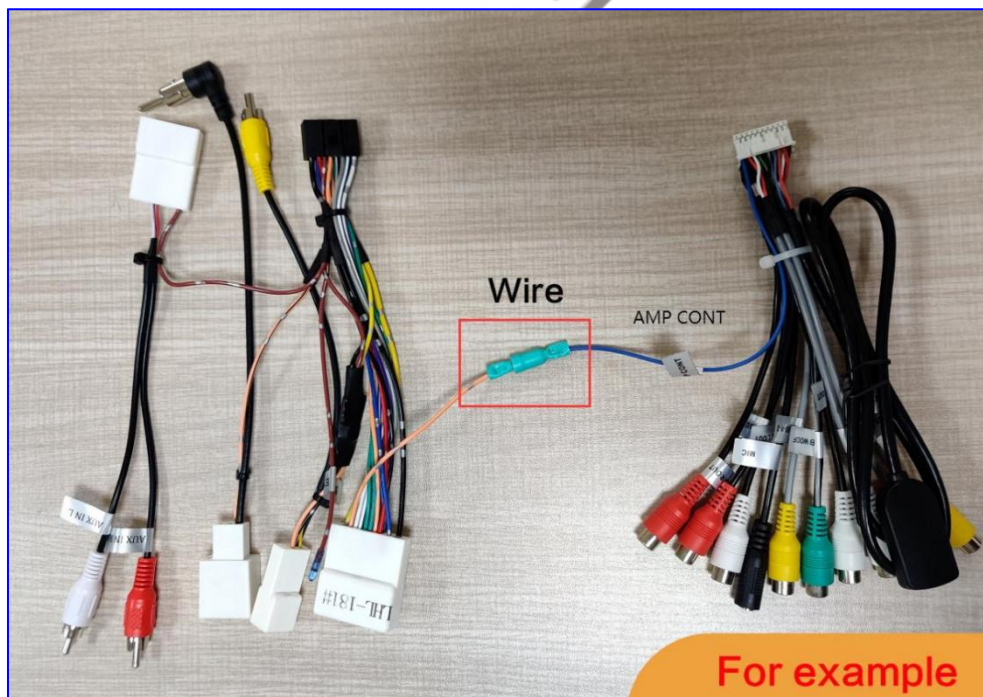
A: Solution:

Please connect the Blue amp control line with a 12V AMP CONT line. and then test it again.

Step 1: Please find the No.18 AMP_CONT line of CAN011-R harness



Step 2: please wire the No.18 AMP_CONT line with a AMP CONT line (12V). Then fix it with a tape.



5. **Model C:** The Nissan Altima radio is with a 7" screen, the CAN008-X harness is correct for your car.

Model Number: SW5227/SYRC8812

Model C: 2013-2015 Nissan Altima,
Original Radio with 7-inch Screen

Compatibility with Original functionality: Bose Amplifier,
Backup Camera or 360 Camera, USB Cable, Air
Condition Climate Controls

Proper Wiring Harness: CAN008-X (Included)

Temperature AC Control Amplifier

Keep the factory temperature AC Control Amplifier and install it back. Then connect it to the original harness. Afterward, the factory AC will display on our head unit.

2013-2015 AC Air Vent

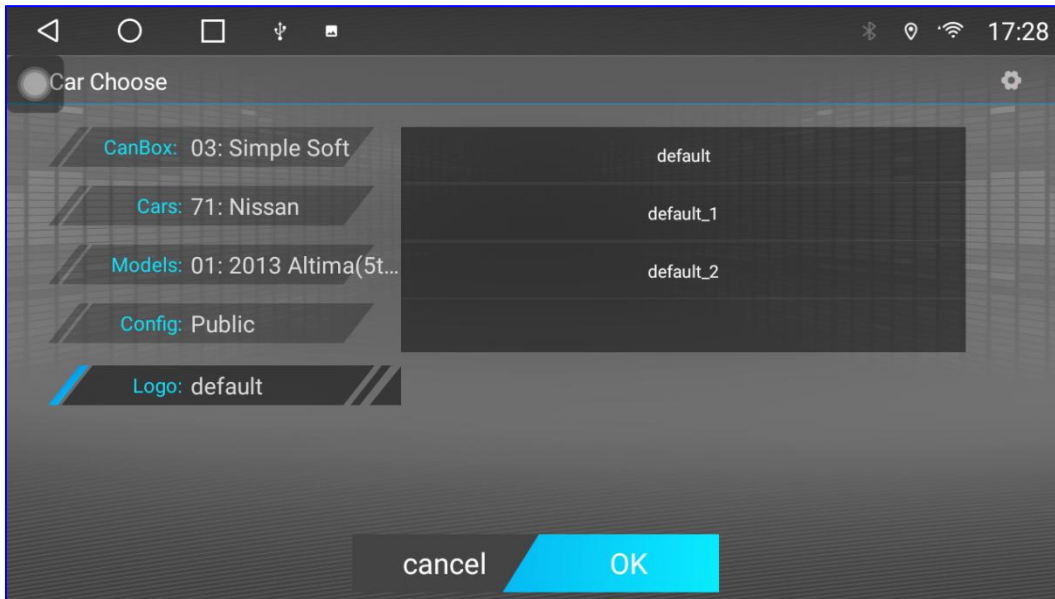
Fit

2016-2018 AC Air Vent

Not Fit

The Canbus option of CAN008-X harness

- CANbus brand: Simple Soft
- Canbus option: CNA008-X harness comes with Simple Soft Canbus Adapter.
- Correct Canbus: Simple Soft - 71: Nissan - 01: 2013 Altima - Public - Logo: Nissan.



6. How to choose the Canbus option.

S1: please connect the wifi or your phone hotspot first.

S2: Setting app – Factory – password 123456– Choose car model.

Video: How to Set Up Canbus on TS10 Android Car Radio

<https://www.youtube.com/watch?v=oRcBn3C6uns&t=4s>

3. How to connect factory backup camera

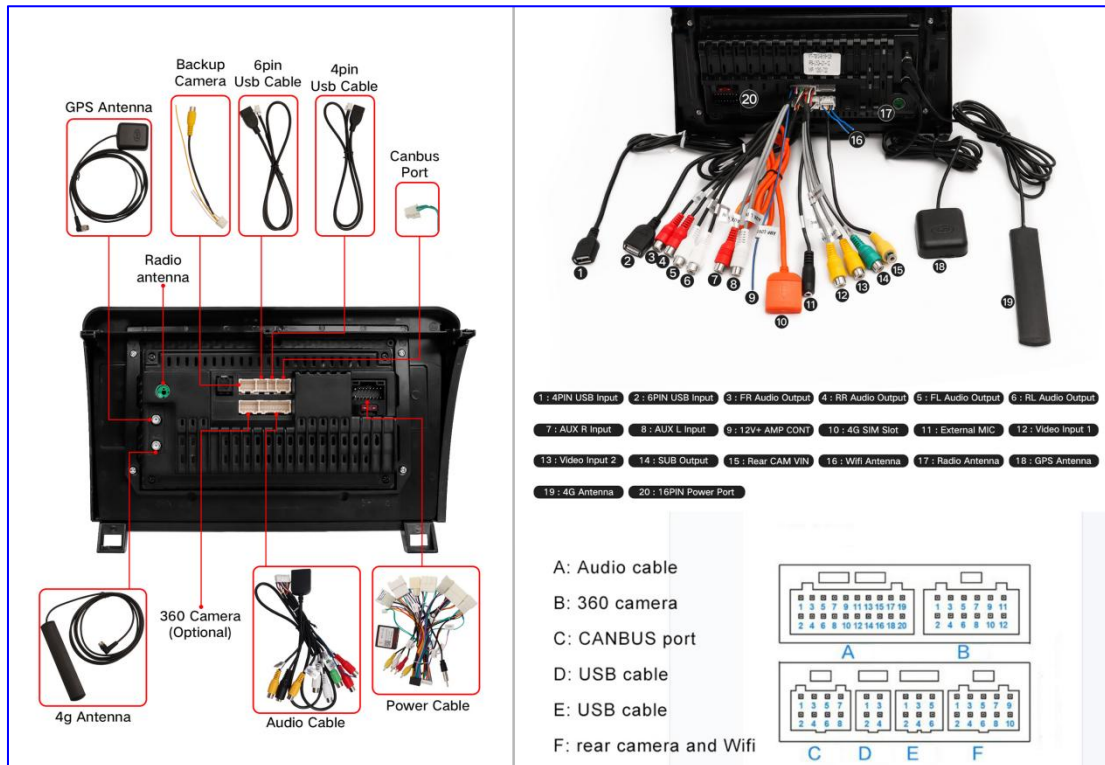
S1: You need to connect the **yellow male camera RCA** of **CAMERA Connector** (CAN011-R or CAN008-X) with the **PIN10 Rear CAM VIN**.

Note: The picture shows a Toyota Wiring Harness for reference.



4. Radio Wiring Diagram

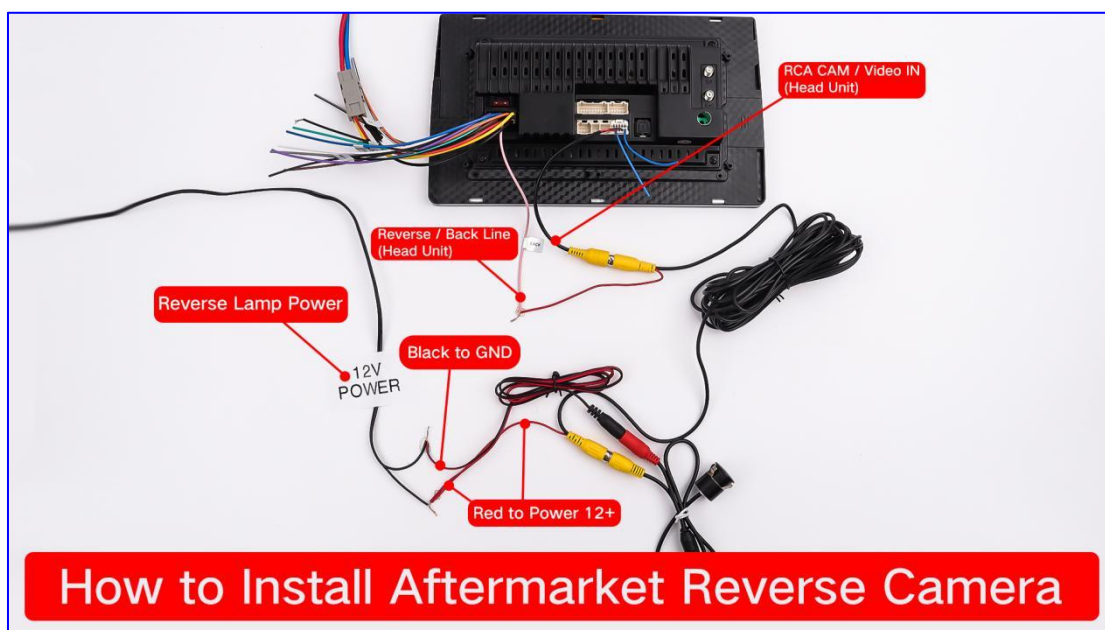
Device Ports



STEP 1: How to connect aftermarket backup camera

Video: How to wire a Backup Camera

<https://www.youtube.com/watch?v=NBKY6S4d5QY>



STEP 2: Set Camera Format

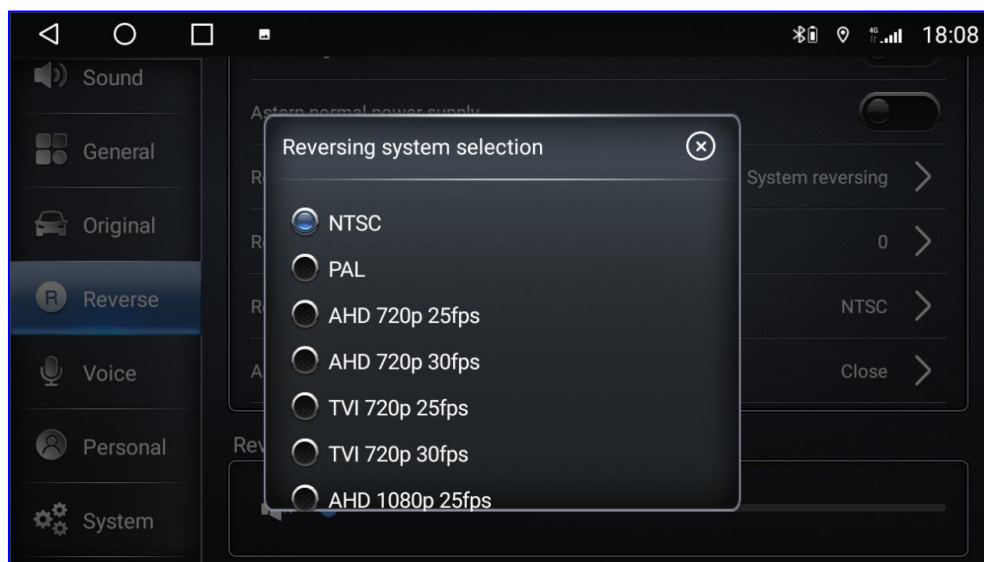
Problem: Why my backup camera image is black when I put the car in reverse?

Please confirm the resolution of your camera first.

1) If your camera is not HD, please choose normal -- SD -- NTSC/PAL.

2) if your camera is HD version, please choose the normal -- HD -- AHD 720P/25fps, or AHD 1080P/25fps.

Then test the camera again after you change the camera format.



5. TS10 Head Unit FAQs

Q1: What is the Factory Setting Password?

The password is: 123456 or 8888

Q2: What is the Reset factory?

The password is: 7890

Q3: How to change the KPH to MPH?

Please click Theme app -- Setting -- Plugin --Speed Unit

You can change to KPH to MPH

How To Change Car Launcher Theme In ViaBecs Car Stereo

Video: <https://www.youtube.com/watch?v=HXSJWJ0eRbew>

Q4: How do i update the ViaBecs TS10 software?

You can update the system and MCU online.

Please connect your home wifi first.

and then open the car setting app -- about -- Detection Update.

Video: <https://www.youtube.com/watch?v=OBABlJvT1lw>

Q5: How to activate Tlink for Apple car play & Android Auto?

How to Connect and Use Wireless Apple Carplay on ViaBecs TS10 Radio

Video: <https://www.youtube.com/watch?v=gizPQ1wS7aA>

S1. You need to connect wifi to activate Tlink when you use it at the first.

How to find the wifi.

Please drop down Quick Setting Menu.

And then a long-press wifi icon to turn on it.

and then you can try to connect your phone hotspot first.

Note: Please clear the Tlink usage record first.

S2. if Tlink still asks you to put the auth_key, please take a clear photo of the QR activating code and then send me.

and then my engineer will activate it after scanning the code.

1) Please click "About" on the Tlink app

2) Choose the first option ((Wireless Carplay + Wireless Android Auto + Wired Android Auto)

Then click the "refresh" to get the new QR code

3) Take a photo and send it to me

Note: the code will be invalid if the time is too long.

and then our engineer will scan the QR code to activate it.

Q6: How To Change Boot Logo On ViaBecs Android Head unit Car Stereo?

Video: <https://www.youtube.com/watch?v=izVcfczZK7U>

Q7: How to remap panel button on ViaBecs car stereo?

Video: <https://www.youtube.com/watch?v=V05wCEH2NRU>