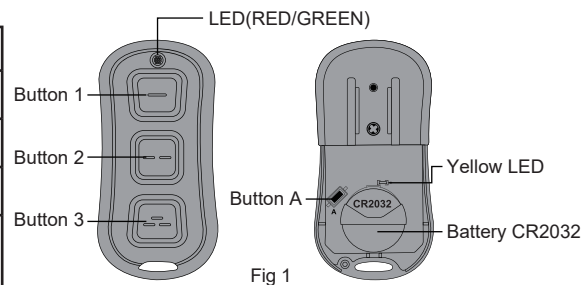


Replacement Genie Intellicode Garage Door Remote

★ Product Specifications

Model Number	RC-SM26-GN-1
Battery Type	Built-in CR2032
Work Voltage	3.3V
Support Frequency	315mhz/390mhz
Code Type	Intellicode 1, Intellicode 2



★ Confirm Garage Door Opener Type Base On The Below Pictures

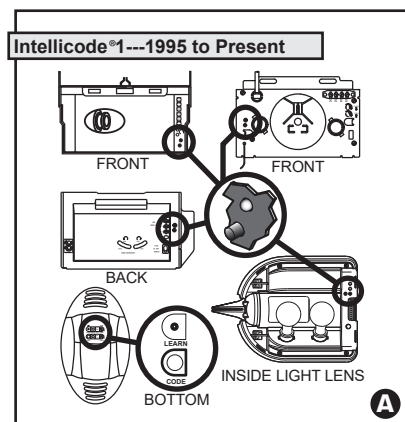


Fig 2

A To Program The Remote to Intellicode 1 Openers From 1995 to Present

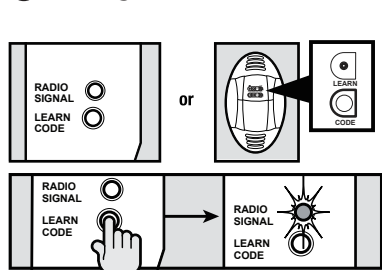


Fig 4

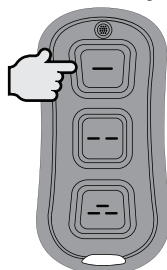


Fig 5

1. Start with your garage door closed. Locate the Learn Code Button and Learn Code Indicator LED on your opener's powerhead. **Fig 4**
2. Press and release the **Learn Code Button**, the Learn Code LED will blink rapidly. **Fig 4**
3. Press and release the **remote button 1**, the Learn Code LED will stay on (stops blinking). **Fig 5**
4. Press and release the **same remote button** again, the Learn Code LED will turn off. **Fig 5**
5. Press and release the **same remote button** again, the Intellicode 1 Door Opener will run. **Fig 5**

A To Program The Remote to Intellicode 2 Openers From 2010 to Present

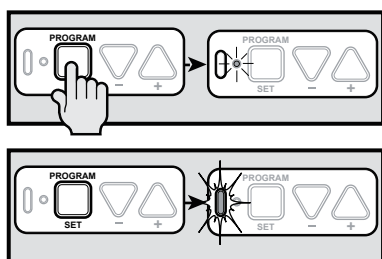


Fig 6

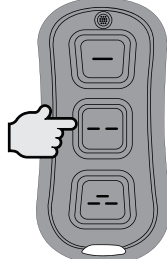


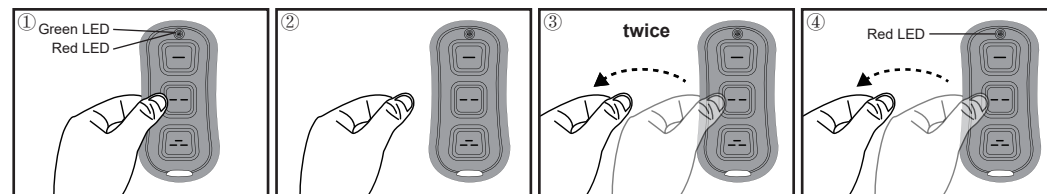
Fig 7

1. Press and hold the **PROGRAM/SET** button on the opener's powerhead for 2 seconds or until the round LED turns **BLUE**. When you release the button, the **BLUE** LED will go out and the opener's LONG LED will turn **PURPLE**. **Fig 6**
2. Press and release the **Remote button 2 or 3**. **Fig 7**
3. Press and release that **same remote button**. **After releasing the button the second time**, the LEDs will both be off. **Fig 7**
4. Press and release that **same remote button**, the Intellicode 2 Door Opener will run. **Fig 7**

★ Each opener must have its own assigned Remote Button. To program additional openers, please shift the Remote Button.

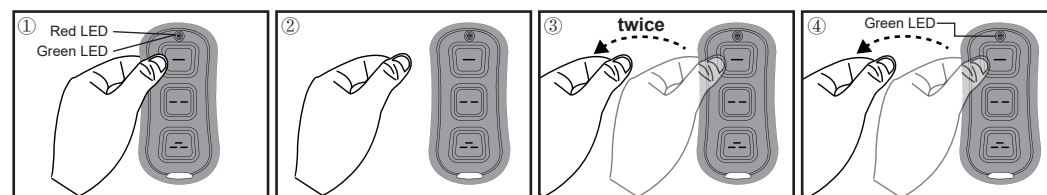
★ If the button was shift as intellicode 1, while you are pressing the button, the LED will show red color. If the button was shift as intellicode 2, while you are pressing the button, the LED will show green color.

◆ Shift Remote button 2 or 3 to Intellicode 1 Mode:



1. Press and hold the **remote button 2 or 3**, a steady **Green LED** will be illuminated and after 10 seconds, a **Red LED** will also illuminate.
2. Release the button.
3. Press and release that **same button** again **TWICE**, the remote's LEDs will both turn off.
4. Press and release that **same button** again, the remote's **Red LED** will light while you press that button indicating it is now in Intellicode 1 mode.

◆ Shift Remote Button 1 to Intellicode 2 Mode:



1. Press and hold the **remote button 1**, a steady **RED LED** will be illuminated and after 10 seconds, a **GREEN LED** will also illuminate.
2. Release the button.
3. Press and release that same button again **TWICE**, the remote's LEDs will both turn off.
4. Press and release that **same button** again, the remote's **GREEN LED** will light while you press that button indicating it is now in Intellicode 2 mode.

★ Replacing The Battery (Programming is not affected by battery replacement)

1. Remove the battery cover.
2. Slide the old battery toward the bottom of the remote and out.
3. Properly discard the old battery.
4. Slide a new (CR 2032) battery into position and install the Cover back on.

★ Lost or Stolen Remote, Erasing All Remotes

For Intellicode 1 Opener type: Press and hold your garage door opener's learn button. The light above the button will turn on and shut off after 6 seconds. Once the light is no longer on, your garage door opener will be cleared of previous remote control connections.

For Intellicode 2 Opener type: Press and hold your garage door opener's program/set button until the round LED turns on blue, then release it. Press and hold the Up(+) and Down(-) button at the same time, until both LED turn on blue and flashing, then goes off.

★ Warranty

This remote carries a one-year manufactures warranty against defects in workmanship or materials commencing from the purchase date of the remote. If any problems occur, please contact us for help.



210×297mm