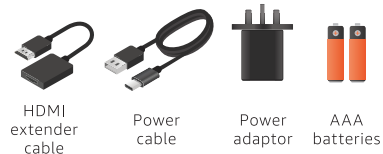


MEET YOUR FIRE TV STICK HD



Also included:

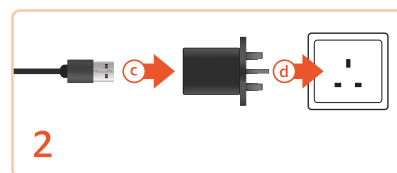
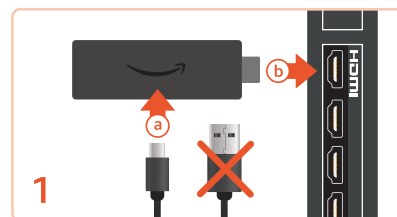


MEET YOUR ALEXA VOICE REMOTE



*Button function may differ by region.

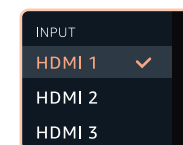
CONNECT YOUR FIRE TV STICK HD



1. Plug the power cable (a) into your Fire TV Stick HD's power port. Next, plug your stick (b) into your TV's HDMI port.

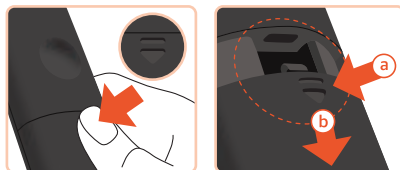
2. Connect the other end of the power cable (c) to the power adaptor.* Then, plug the power adaptor (d) into an electrical socket.

*For the best performance, power your Fire TV Stick HD using the included power adaptor.



3. Turn on your TV and switch to the appropriate HDMI input.

SET UP YOUR REMOTE



1. Press and hold your thumb on the arrow to release the latch.
2. Make sure you (a) press the arrow firmly to release the latch as you (b) slide the cover off.
3. Insert included batteries.

Note: if it didn't pair, press and hold Home (Ⓢ) for 10 seconds.

HELPFUL TIPS



Use the included HDMI extender if it's difficult to plug your Fire TV Stick HD into your TV's HDMI port.



If your new remote doesn't connect, remove and reinsert its batteries.

Replace used batteries with new 1.5 V alkaline or 1.2 V NiMH rechargeable AAA batteries.

amazon alexa



Use your Alexa Voice Remote with your Fire TV Stick HD to search for and enjoy thousands of films, TV programmes, apps and games.