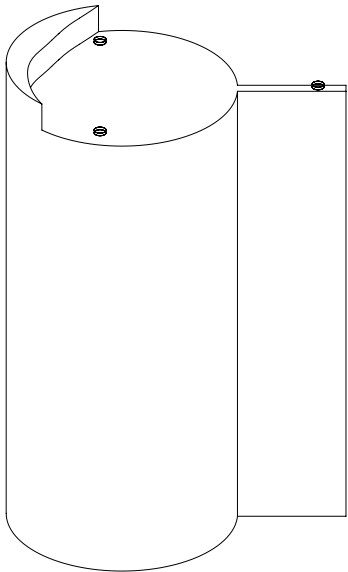




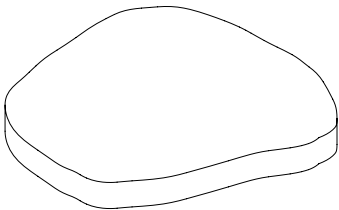
The Rene Drink Table

Included Components & Hardware	Tabletop (1) Base (1)	Tools Needed	Level	Notes	Assembly requires 2 people.
--------------------------------	--------------------------	--------------	-------	-------	-----------------------------

Base (1)



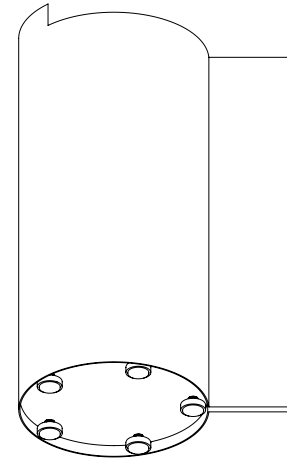
Tabletop (1)



The Rene Drink Table

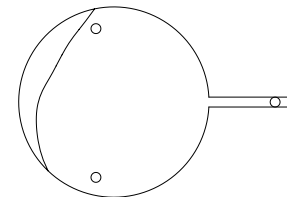
Step 1

Locate the nut underneath the base and remove it, as this nut is used only for transit protection. Once the nut is removed, install the leveling glides, adjusting them as needed to ensure the base sits evenly on the floor.



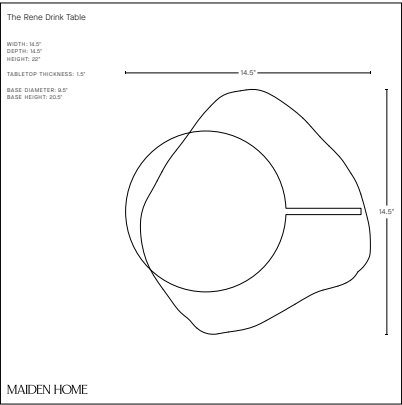
Step 2

Looking at the top of the base, check to ensure the bumper quantity and placement match the illustration at right.



The Rene Drink Table

Step 3 Lay the paper template on top of the glass.
With two people holding the tabletop above the base, carefully rotate it as needed to match the intended orientation illustrated at right.



Step 4 Once the tabletop is in the proper position, carefully lower it onto the base and remove the template. The tabletop should be securely positioned atop the base.

