



SOLAR SMART SENSOR LED BRICK LIGHT

USER MANUAL

PART NO.:

☐ 709440 WHITE

☐ 709442 BLACK



6W
Watts

800
Lumens

IP65
Rating

120°
Detection
Angle

The smarter way of lighting

MANUFACTURER
WARRANTY
12
MONTHS



RoHS
COMPLIANT

IEC62471



Please read and follow all instructions to operate.
Save this manual for futures reference.

NOTICE

1. The lamp button is a power-off switch, the lamp can get solar charged in any mode.
2. This is a solar powered lamp, please install it in a location where it can get enough sunshine.
3. Please note the lighting time depends on the sunshine duration & weather.
4. Built-in intelligent IC with over-charge, over-discharge and over-voltage protection.
5. The lamp is equipped with an internal battery pack, which is replaceable. If required, please contact the seller for the correct new battery pack.
6. Non-professionals please do not disassemble the lamp.
7. Please do not dispose of the battery with household garbage to avoid explosion.

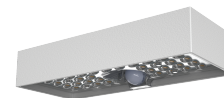
SPECIFICATIONS

LED Chip Type:	35 x SMD 2835
Recharge Time:	8-10 Hours of Sunlight
Overall Dimensions (mm):	230 x 97 x 42.7
Motion Detection Angle:	120°
Motion Detection Distance:	6Mtr
Beam Angle:	140 x 70°
Frame Colour:	White or Black
LED Colour:	Cool White
Working Temperature:	-20°C ~ 60°C
Housing Material:	LG Brand ABS & PC
Solar Panel Output:	2.8W, DC5.5V Mono with Tempered Glass
Battery (Replaceable):	3.7V / 3000mAh

FEATURES

- Lumen output of up to 800lm.
- 120° wide angle PIR sensor detects up to 6 meters away.
- Lasts up to 2-4 nights from a single 8-10 hour charge.
- Rated IP65 water and dust protection.
- Made from high quality Anti-UV and Flame-Retardant material.
- Easy to install, no wire, no running power cables, just fit and forget.
- Mounting screws included.

ACCESSORIES



1 x Solar Smart Sensor
LED Brick Light

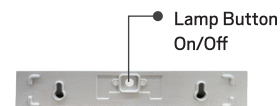


Screws



User Manual

WORKING MODES



Button Control:

Please press the button on the lamp to select working modes.
Press 1st time for Mode A;
Press 2nd time for Mode B;
Press 3rd time for off

Please print on A4 paper in landscape orientation

Mode A - Sensor Mode

When battery power is more than 30%
The lamp will automatically turn on 100% full brightness when the sensor has detected motion in the 6 meter radius and then turns to 5% brightness for 20 seconds after motion.



When battery power is less than 30%
The lamp will automatically turn on 100% full brightness when the sensor has detected motion in the 6 meter radius and then turns off after 20 seconds of no motion.

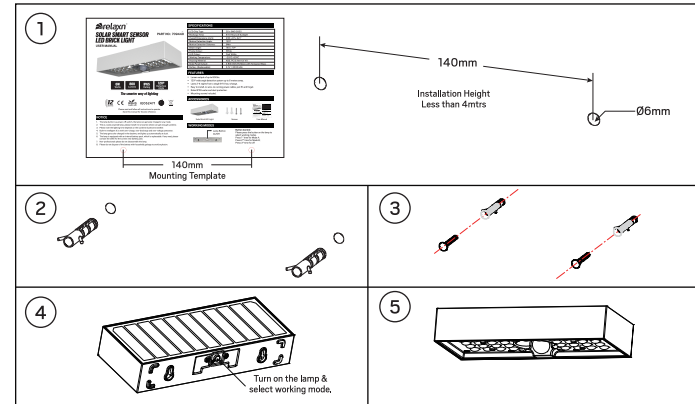


Mode B - Constant Lighting Mode



The lamp will automatically turn on at night and keep 50% brightness constantly. After 5 hours or when battery power is less than 30%, it turns to energy-saving mode, then the lamp will automatically turn on 100% full brightness when the sensor has detected motion in the 6 meter radius and then turns off after 20 seconds of no motion.

INSTALLATIONS



1. Drill 2 holes of Ø6mm with a depth of 50mm and hole distance of 140mm on the wall.
2. Fix the expansion plugs in the holes.
3. Fit the screws into the expansion plugs, and allow the screws to protrude slightly around 4mm.
4. Turn on the lamp and set desired working mode.
5. Hang the lamp on the screws to fix the lamp on the wall.

WARRANTY

Sam Allen Wholesale warrants this product against defects in manufacture and workmanship for a period of 1 year from the date of purchase. This warranty is only valid for products installed and operated within the guidelines specified by Sam Allen Wholesale, and within the correct operating voltage ranges as stated on the product's rating label.

Warranty does not include damage or loss arising from incorrect installation, operation or maintenance of this product, damage caused through modification, service by unqualified or unauthorised personnel or lack of regular maintenance and cleaning. Proof of installation by qualified personnel may be required.

This warranty is provided in addition to any other rights and remedies of the customer under any law. In applications not intended for household, personal or domestic use, liability is limited to replacement or reimbursement of the product only. Sam Allen Wholesale does not warrant the costs of removal or re-installation of this product or associated components.

Our goods come with guarantees that cannot be excluded under the Australian Consumer Law. The consumer is entitled to a replacement or refund for a major failure and compensation for any other reasonably foreseeable loss or damage. You are also entitled to have the goods repaired or replaced if goods fail to be of acceptable quality and the failure does not amount to a major failure.

To make a claim under the warranty: Please return to the point of purchase, including reasonable proof of that purchase.

Please print on A4 paper in landscape orientation