

## 5/8/10 Bit System Instruction Manual for Reader/Writer

Type code : Z6-01-U (USB interface)



Left: This is the appearance provided until around April 2021. (Old)

Right: This is the appearance provided after around April 2021. (New)

The shape is different, but the function is the same.

### Safety Considerations

(Please read before use)

Before using Z6-01, read this manual carefully and operate properly, paying attention to the safety aspects.

#### [Planning the System]

- Do not exceed the specifications for supply voltage, conditions of use, etc. as indicated in this manual. This may cause severe overheating

#### [Handling the System]

- Supply the power only described in the specification.
- Do not dismantle or modify the devices. This could cause malfunction or overheating.
- Dispose the device as the industrial waste.

## ■ Contents ■

1	Description	
1. 1	Description	3
1. 2	System configuration	3
1. 3	Dimension and Specification.	4
1. 4	Applicable RFID chip	4
2	Installation of driver and IDRWUSB	
2. 1	Attention before installation	5
2. 2	Installation of driver	5
2. 3	Installation of IDRWUSB	6
3	How to use IDRWUSB	
3. 1	Setting of the COM port	6
3. 2	Select the bit number	6
3. 3	For IDRWUSB connection	6
3. 4	Reading of data	7
3. 3	Writing of data	7

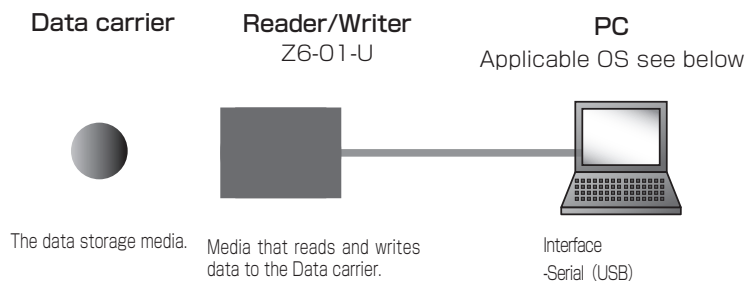
## 1. Description

### 1.1 Description

"B&PLUS ID System / 5,8,10 bit System" is a RFID System by electromagnetic induction method, reading and writing of data.

By Z6-01-U is connected by or USB to the PC, you are using an application (IDRWUSB) , it can be done easily from the personal computer, the editing and data writing and data reading of the Data carrier.

### 1.2 System configuration



Data carrier	The data storage media.
Reader/Writer	Media that reads and writes data to the Data carrier.
Driver	Driver to recognize the Reader/Writer to the PC.
Application	Software for performing data editing.
PC	In the application, edit the data and Instructions data communication. Applicable OS : Windwos 2000 / XP / Vista / 7 / 8 / 10

#### ■ About Driver and Application software

Product documentation and software, it can be download from our web site.

URL : <http://www.b-plus-kk.jp/download.html>

The ID and password are as below.

ID:user , Password : wirelessbplus

Driver and application depends on the connection method and the ID reader-writer.

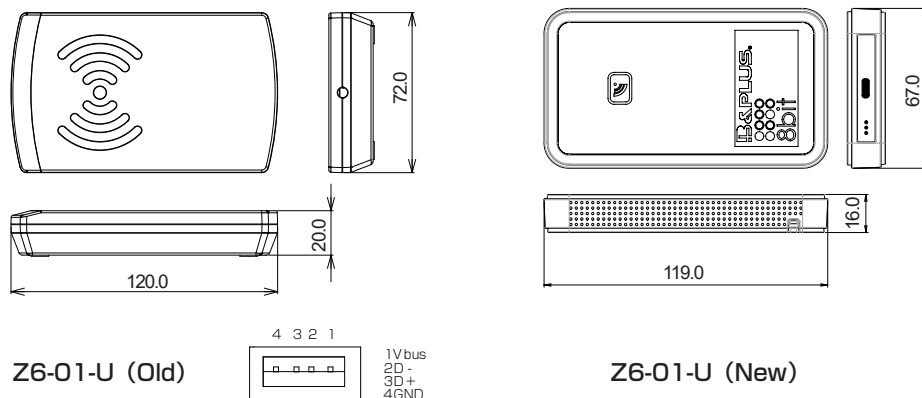
Type code	Connection	Application	Driver	COM port
Z6-01-U	USB	IDRWUSB-xxx	Need	Selected application is automatically

Driver that you want to install different by Windows.

Windows2000 . . . . CDM20600.exe

Others . . . CDM20828\_Setup.exe

### 1. 3 Dimension and Specification.



Z6-01-U (Old)

Z6-01-U (New)

Type code	Z6-01-U (Old)	Z6-01-U (New)
Applicable Data carrier	Z1 series	
Carrier frequency	13.56MHz	
Interface	USB	
Supply voltage	3.3V Max.190mA (Supply from USB )	
Operating temperature / humidity	0℃～+50℃ / 20%～80% (not to be frozen)	
Storage temperature / humidity	-10℃～+70℃ / 10%～90% (not to be frozen)	
Material	ABS	Body: ABS    Cover: Silicon rubber
Weight	90 g	116g
Radio standards law (Japan)	This machine has built-in high-frequency utilization equipment which acquired model designation (Ministry of Internal Affairs and Communications designated BC-09004).	

Left: This is the appearance provided until around April 2021. (Old)

Right: This is the appearance provided after around April 2021. (New)

The shape is different, but the function is the same.

### 1.4. Applicable RFID chip

This unit corresponds to the communication protocol of the ID chip on the right table.

When using other than our ID tag (Z1 series), please confirm when using, as the communication distance, the processing time and the communication quality depend on the characteristics of the ID chip and the ID reader / writer

Chip	Maker	Capacity
MB89R118	Fujitsu	2000byte(FRAM)
I-CODE SLI,SLIX	NXP	112byte
Tag-it HF-I plus	TI	256byte
my-d(SRF55V02P)	Infineon	224byte
my-d(SRF55V10P)	Infineon	992byte
Tag-it HF-I standard	TI	32byte
Tag-it HF-I pro	TI	32byte

It is a registered trademark of I-CODE SLI, SLIX is NXP semiconductor, FRAM is Ramtron International, Tag-it is Texas Instruments Incorporated, my-d is Infineon Technologies.

## 2. Installation of driver or IDRW

### 2.1 Attention before installation

- Please start the installation from quit other applications.
- Depending on the version of windows,the different installation methods.
- The driver is intended to be treated as a COM port USB.

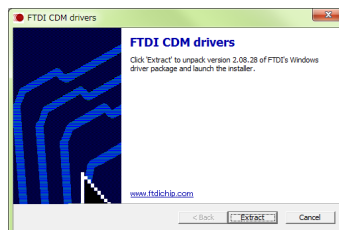
### 2.2 Installation of driver

#### ① Starting the Installation

You are using Windows2000, please double-click the "CDM20600.exe". Errand, please double-click on the "CDM20828\_Setup.exe" version of the other.

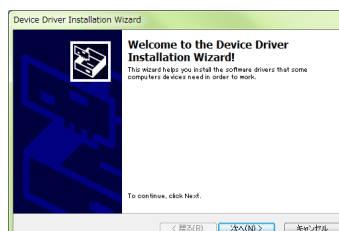
#### ② Decompression of files

Click 「Extract」



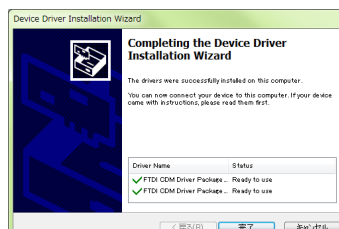
#### ③ Execution of installation

Click 「次へ (N)」



#### ④ Finished

Click 「完了」



## ■ For drivers of this product

This product uses USB interface IC by FTDI.  
The driver "VCP(Virtual COM port)" is also possible at the following Web sites by FTDI, be asked to download the latest version.  
« <http://www.ftdichip.com/> »

## 2. 3 Installation of IDRUSB

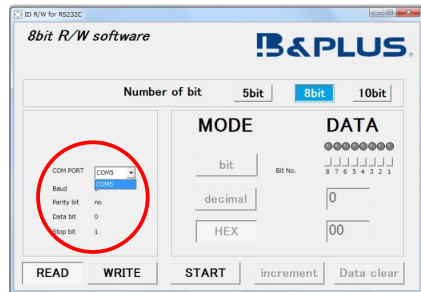
After selecting "DRWUSB" folder, then transfer by drag and drop to the location of any of the personal computer, it becomes the installation is complete.

## 3. How to use IDRUSB

### 3. 1 Setting of the COM port

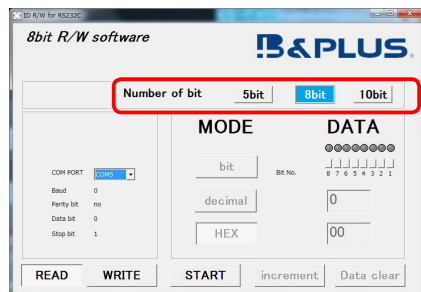
Please select the port Reader/Writer is connected.

Appropriate port number in the case of the Z6-01-U is the number in the "port(LPT and COM) " of Device Manager of Windows, is listed as "USB Serial Port".



### 3.2 Select the bit number

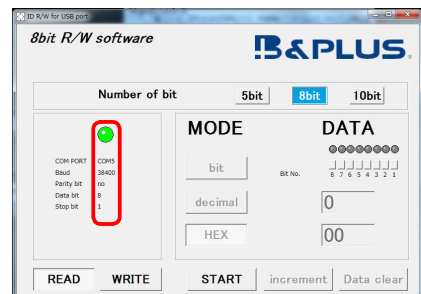
Select 5 bits, 8 bits or 10 bits. In this manual, it is explained when 8 bit is selected.



### 3.3 For IDRUSB connection

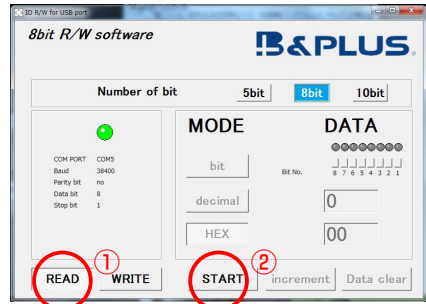
The setting of the COM port is done application is automatic.

When the configuration is properly completed, you will see configuration information.

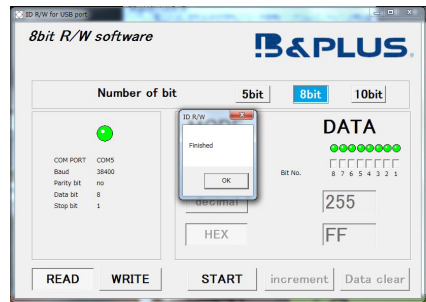


### 3. 4 Reading of data

After is opposed to Active surface with the Data carrier, you click the "READ" ①, please click the "START" ②.



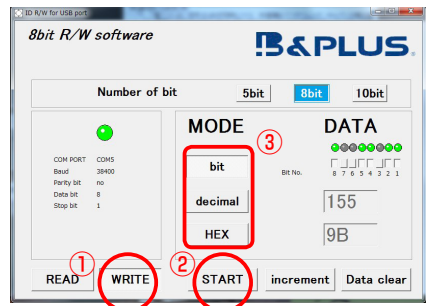
Data read from the Data carrier is displayed, "Finished" is displayed.



### 3. 5 Writing of data

After is opposed to Active surface with the Data carrier, Click the "WRITE" ①, select "MODE" ②, input the data to "DATA" and then click the "START" ③.

bit(Binary), decimal, HEX(hexadecimal) will be linked when you enter in any.



Data is written to the Data carrier, "Finished" is displayed.

## Application software change history

Date	File	Contents
2015.04.30	IDRWUSB_V300	It corresponds to 10 bits. Release of USB application.
2015.07.24	IDRWUSB_V320	Corrtdponds to Tag-it HF-I (standard,plus,pro) . "10bit" is added in the operation screen.
2016.04.18	IDRWUSB_V400	Corresponds to 5 bits

Wireless Power Supply by  
**B & PLUS K.K.**

Mail : [b-plus-usa@b-plus-kk.com](mailto:b-plus-usa@b-plus-kk.com)  
Web : <http://www.b-plus-kk.com>

\* Contents is subject to change without notice.