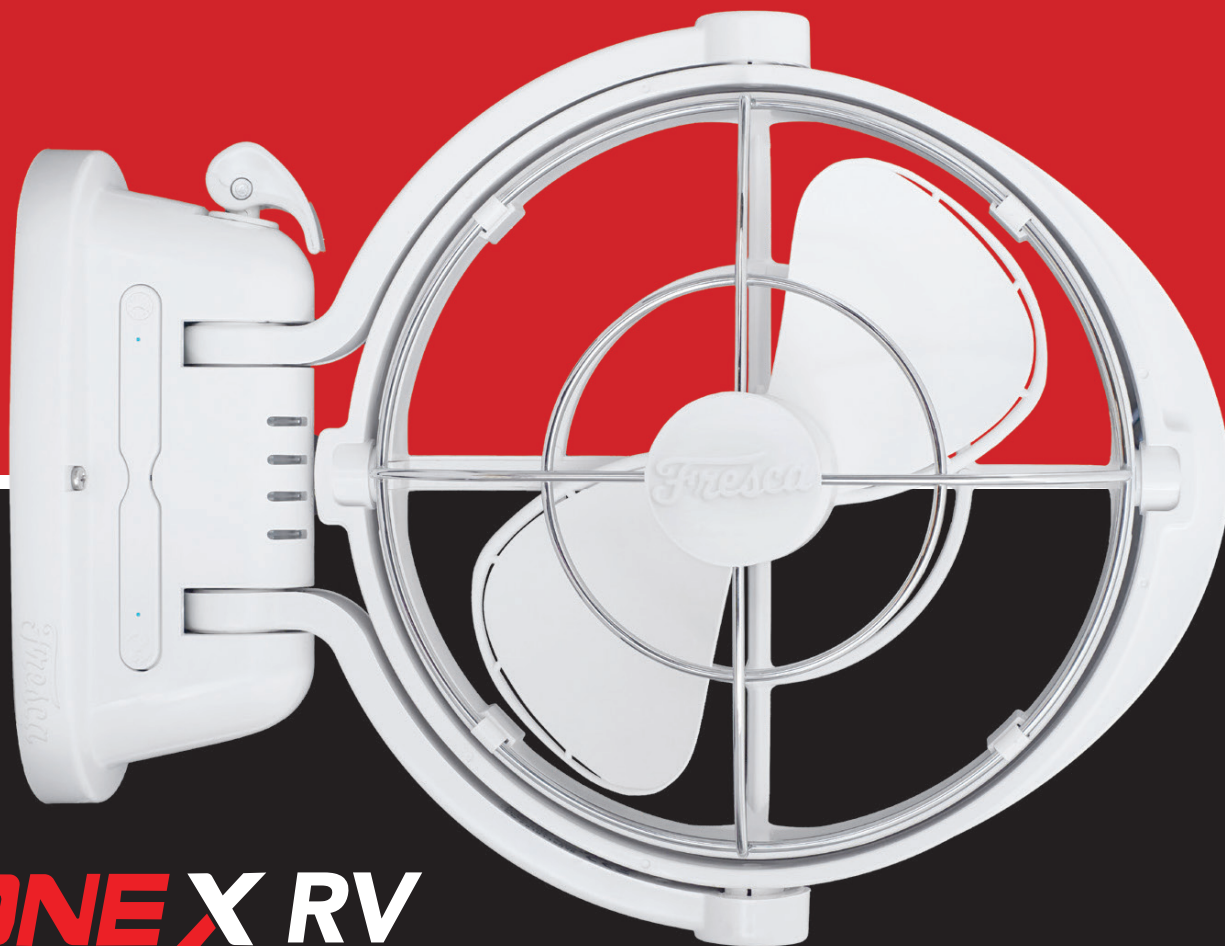


**ORA-01**

*Fresca*

*The fan for your RV*



**ONE X RV**  
ACCESSORIES

## **User Manual** (English)

[www.onex.com.au](http://www.onex.com.au)

### **Limited Warranty**

This product has a 2 year limited warranty from the date of purchase. The product you have purchased has been guaranteed by the manufacturer for the warranty period stated starting on the date of purchase against defects in workmanship and/or materials. This guarantee does not apply if the damage occurs because of accident, improper handling or operation, shipping damage, abuse, misuse, or unauthorized repairs made or attempted. Only parts that prove to be defective during the period of guarantee will be replaced without charge. When goods are sold in AU or NZ, our goods come with guarantees that cannot be excluded under the Australian Consumer Law. You are entitled to a replacement or refund for a major failure and compensation for any other reasonably foreseeable loss or damage. You are also entitled to have the goods repaired or replaced if the goods fail to be of acceptable quality and the failure does not amount to a major failure.

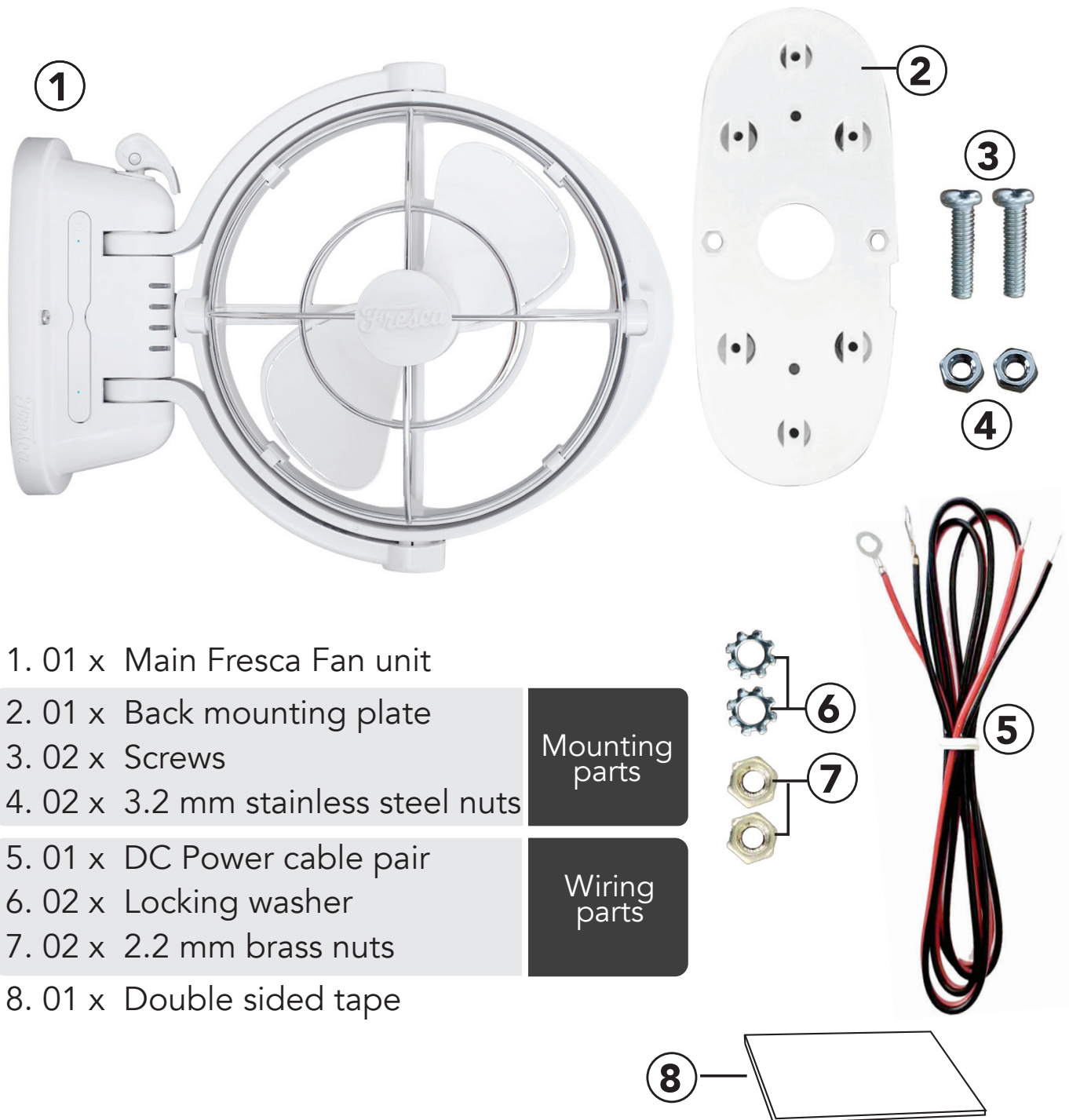
In order to claim the warranty on a purchased product: This product is manufactured by Team Noble Limited, contact number +86 755 85278182 - Exclusive to Onex Email: [inquires@1xproducts.com](mailto:inquires@1xproducts.com)

# 1

## Items supplied in package

### Unpacking the product

Carefully unpack the box and confirm that the following items are included:



1. 01 x Main Fresca Fan unit

2. 01 x Back mounting plate

3. 02 x Screws

4. 02 x 3.2 mm stainless steel nuts

Mounting  
parts

5. 01 x DC Power cable pair

6. 02 x Locking washer

7. 02 x 2.2 mm brass nuts

Wiring  
parts

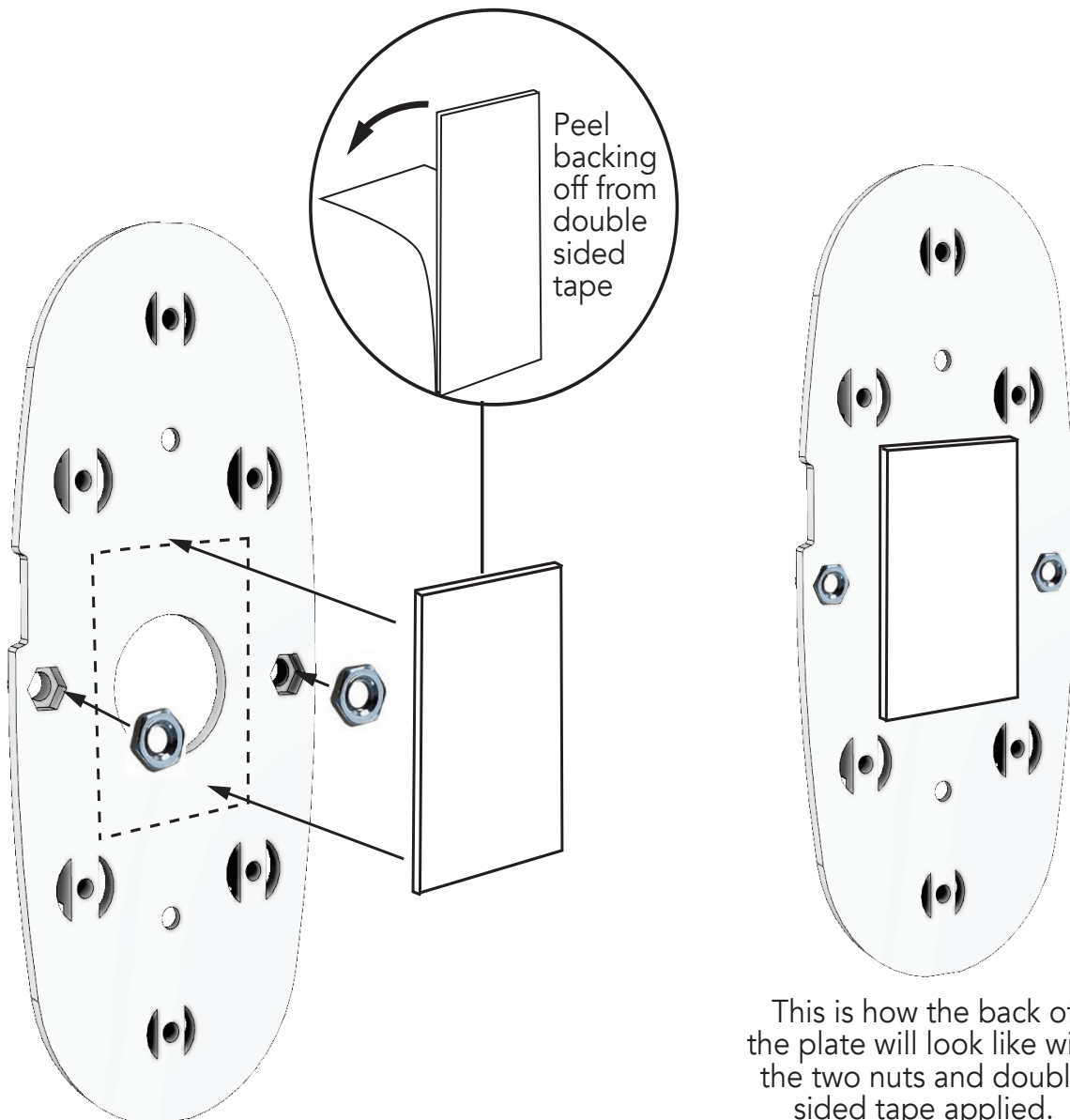
8. 01 x Double sided tape

### Equipment required for installation (Not included in package)

- Adjustable wrench (to assemble cables to bottom of unit)
- Phillips head screw driver
- 06 x 6 mm diameter mounting screws

## 1. Preparing of back mounting plate

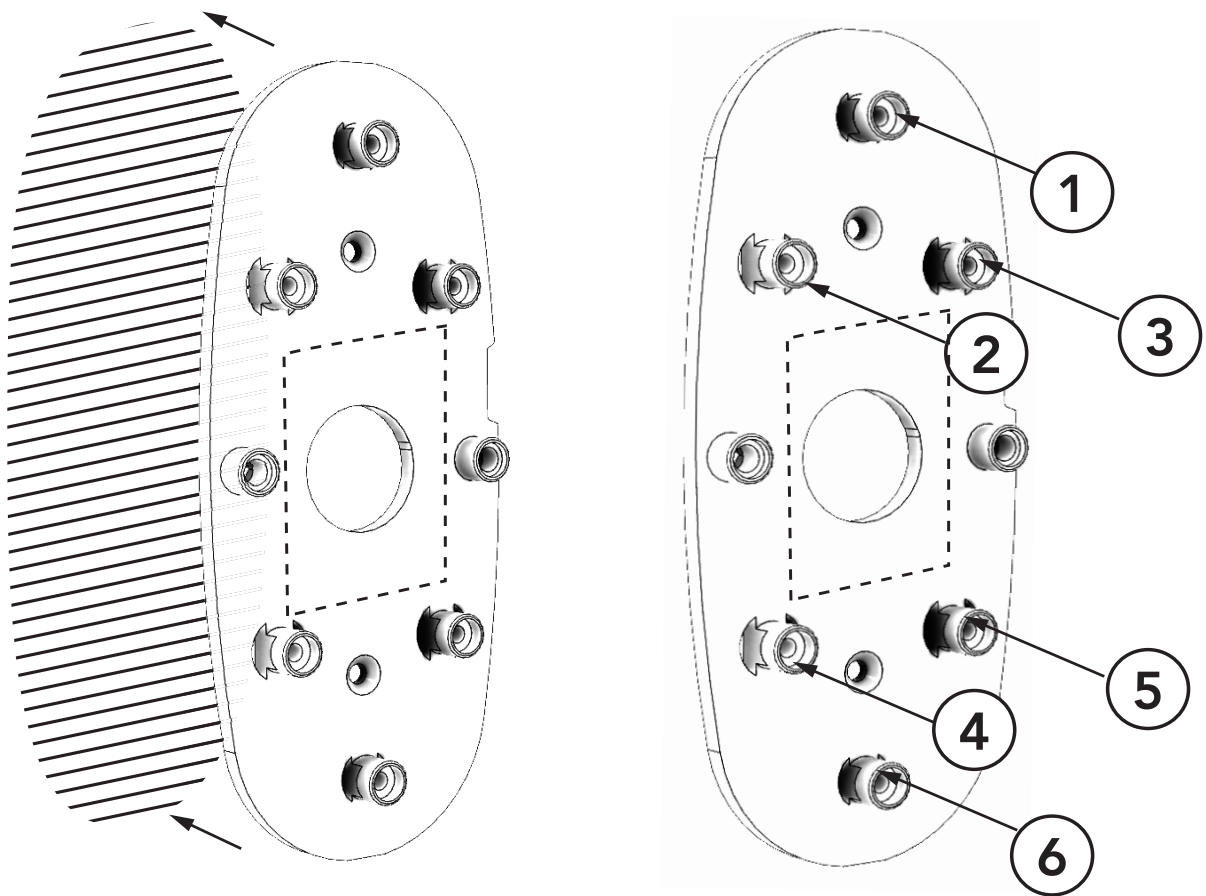
- Identify the intended mounting location for the fan.
- Insert the 2 stainless steel (**Item 4**) nuts into the nut recess holes on both sides of the back mounting plate.
- Peel backing off from double sided tape (**Item 8**) supplied, and stick it onto the back of the back mounting plate.



## 2. Mounting of back mounting plate

- a. Place the back mounting plate with the double sided tape facing towards the mounting location and stick the back mounting plate in place.

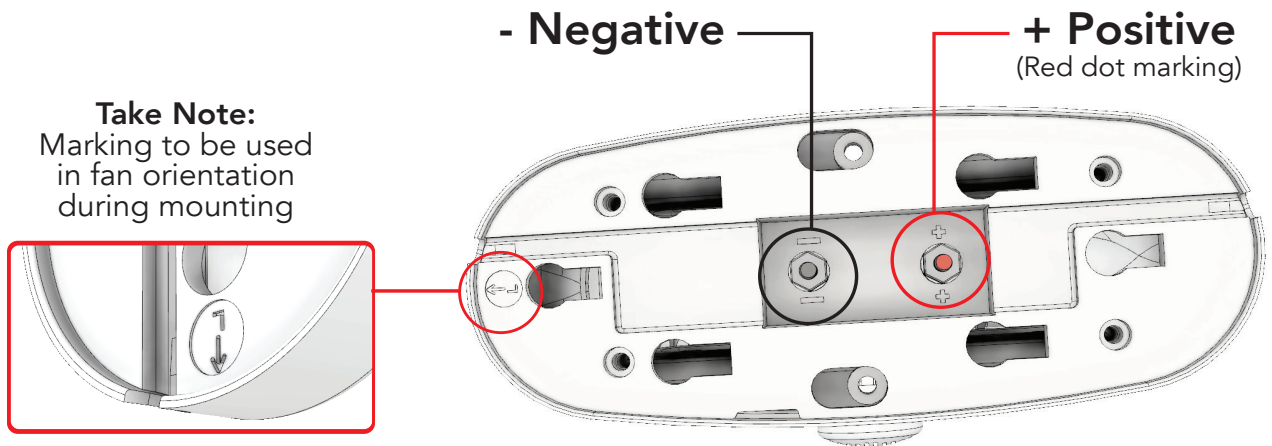
Use 6 mm screws (**not supplied**) suitable for use in mounting of fan



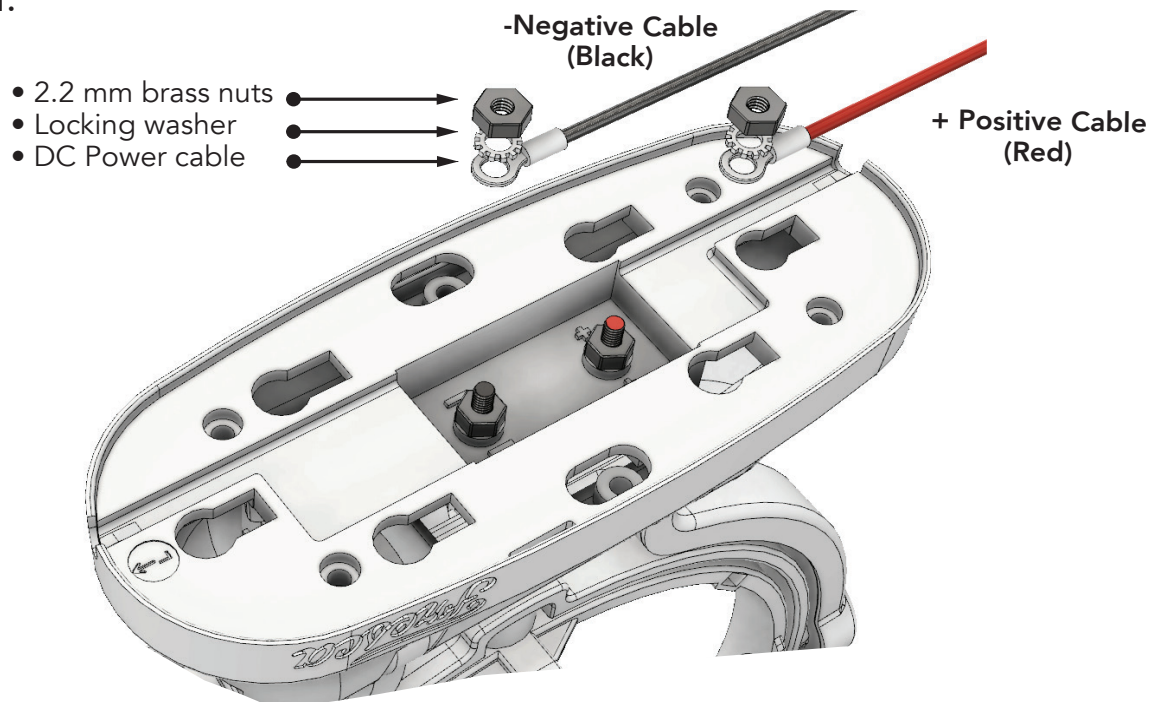
- b. Secure the back plate permanently at the intended location with 06 x 6 mm screws (not supplied) that is suitable for the wall at the mounting position.

## 3. Electrical wiring

- a. Locate the two DC power terminals at the bottom of the fan unit marked (+) Positive and (-) Negative.



- b. Connect the supplied DC power cable pair (**Item 5**), onto the two terminals - with the DC power cable pair (**Item 5**), locking washers (**Item 6**) and brass nuts (**Item 7**) in the correct order as shown.



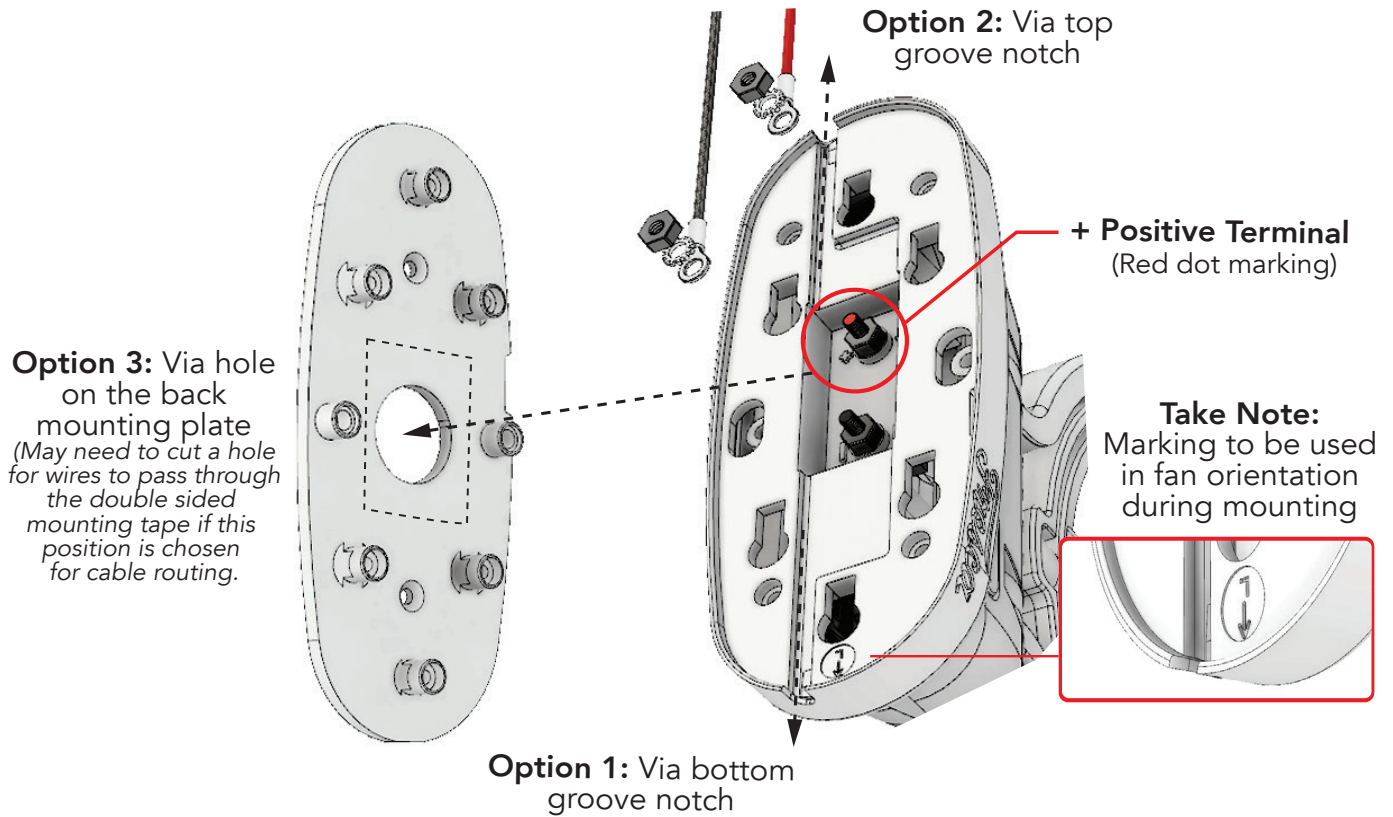
- c. Tighten all brass nuts on the two (+) Positive & (-) Negative terminals with a pliers or wrench. Do not tighten by hand ONLY.



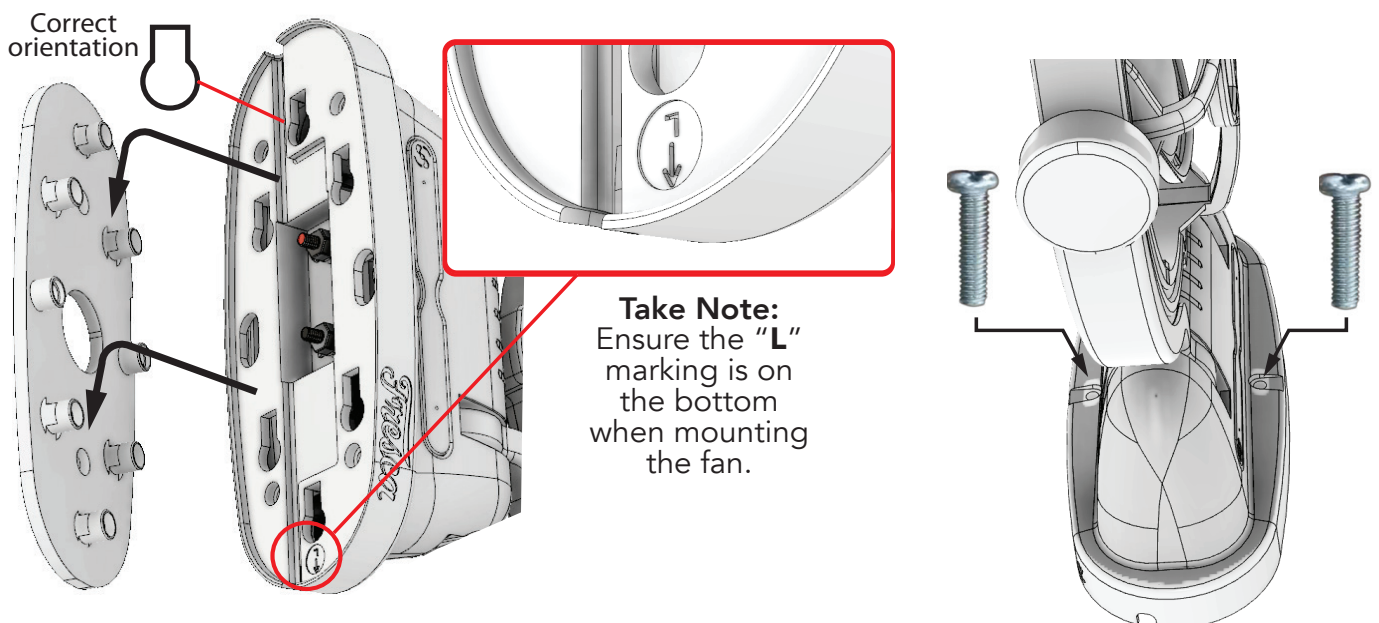
# 5

## Installation - Routing the cable and mounting

d. There are three options to routing of the DC power cables, depending on how you are wiring the power cables.

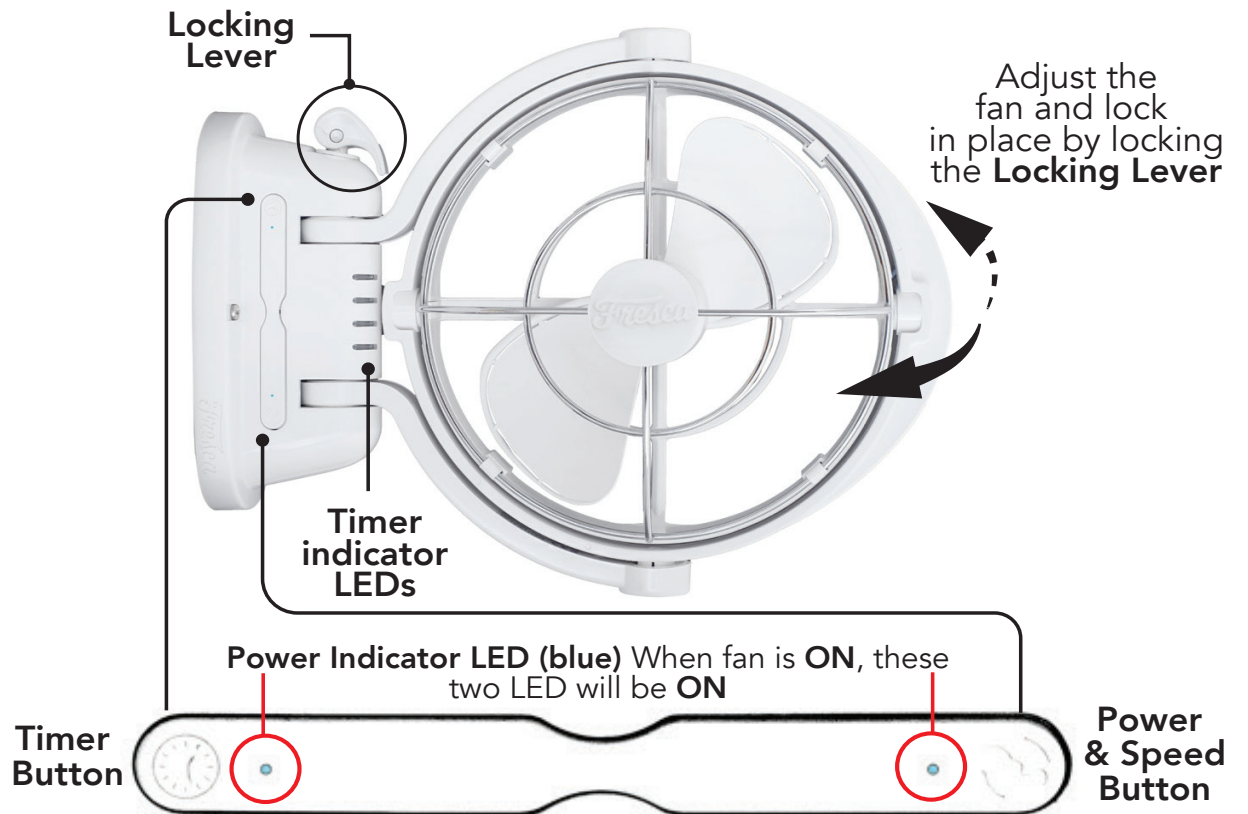


e. Once the wiring has been done, mount the fan unit onto the back mounting plate by sliding it onto the corresponding 6 key-slots & secure the fan with the two screws provided (**Item 3**).



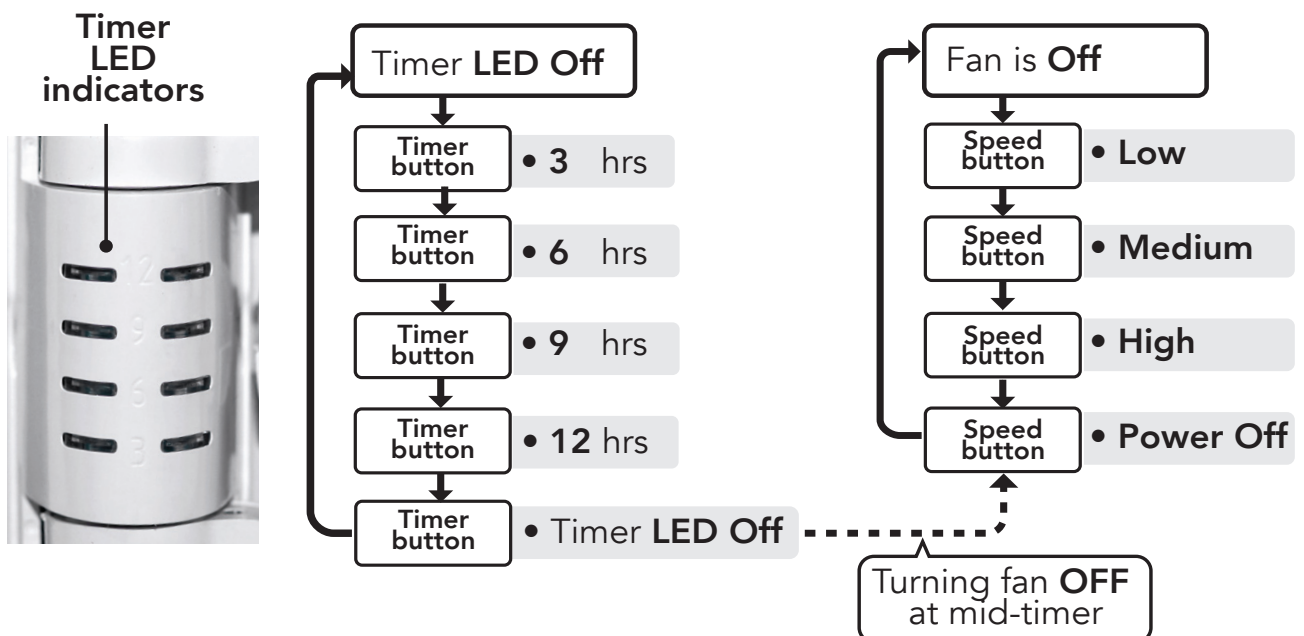
Keep the fan blades clear of any obstructions during operation.  
The fan **MUST** be locked in position before turning on.

## 3. Fan directional angle adjustment



a) Timer  
Press to cycle through **Timer**

b) Power & Speed  
Press to cycle through **Speed**



# 7

## Safety

- The Fresca fan unit includes an over-current protection that protects the motor from short circuit.
- The Fresca fan unit includes a reverse polarity protection that protects the fan against any accidental reverse polarity.

# 8

## Care & Maintenance

- The Fresca fan unit is designed for low maintenance.
- Turn off power to unit before any cleaning operations.
- The fan can be cleaned by wiping off accumulated dust or dirt with a dry cloth.
- Do not use cleaning solvent on any of the fan's parts and surfaces.

# 9

## User Warnings & Reminders

- Do not obstruct moving fan blades during operation.
- Do not use the fan outdoors (this fan is ONLY for indoor use).
- Do not use on wet surfaces or immerse in water.
- Do not place any objects close to the fan that may be sucked in or drawn onto the blades.
- Do not use near open fires, fireplace, stoves or any high heat source.
- Children must be supervised to ensure that they do not play with the fan.
- Do not use fan when any of the power cables to the fan is frayed or damaged.

# 10

## Specification

Fan Speed	Current Draw in Amperes (A)		RPM
	12 Volts	24 Volts	12 Volts & 24 Volts
LOW	0.12	0.06	1100 $\pm$ 100
MEDIUM	0.22	0.11	1400 $\pm$ 100
HIGH	0.35	0.21	1700 $\pm$ 100

Maximum Airflow:

- 140 CFM (Cubic Feet Per Minute)
- 238 m<sup>3</sup>/h (Cubic Feet Per Hour)