



MAKE A DIFFERENCE

Front Bumper

BXG.8805

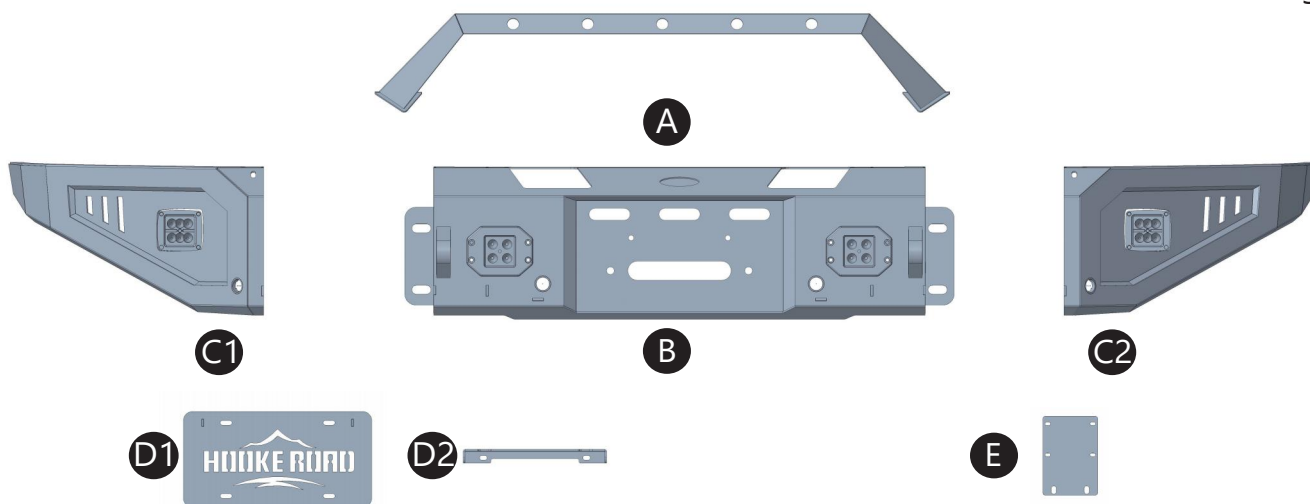
(INSTALLATION INSTRUCTION)

ATTENTION • Please verify all parts are present and read instructions carefully before starting installation.
• Please feel free to contact your distributor if you have any kind of question about your purchase.

CONTENTS

Left

Right



A1&A2&A3: Bull Bar

B: Main Body

C1&C2: Wings

D1&D2: License Plate Brackets

E: Winch Power Control Box Bracket

Qty	Part Name	Size(mm)	Picture	Qty	Part Name	Size(mm)	Picture
6	Hex Bolt	M12×35		6	Flat Washer	M8	
6	Hex Bolt	M12×30		4	Flat Washer	M6×12×1	
6	Hex Bolt	M8×20		2	Nylon Round Spacer	M6×12×1.3	
4	Hex Bolt Plate	M6×16		12	Hex Nut	M12	
8	Hex Bolt	M4×20		6	Flange Hex Lock Nut	M8	
12	Button Bolt	D12		4	Nylon Lock Nut	M6	
6	Split Lock Washer	D8		1	L-Wrench	M4	
18	Split Lock Washer	M12×30×1.5		2	EVA		

2 TOOLS REQUIRED

◆ Drive Ratchet Handle

◆ 10mm, 13mm Wrench

◆ 4mm Hex Bit Socket

◆ 19mm Wrench

To view online instruction, please scan the QR code.



3 INSTALLATION INSTRUCTION

Step 1

Place the vehicle in park, remove the factory bumper from the frame.



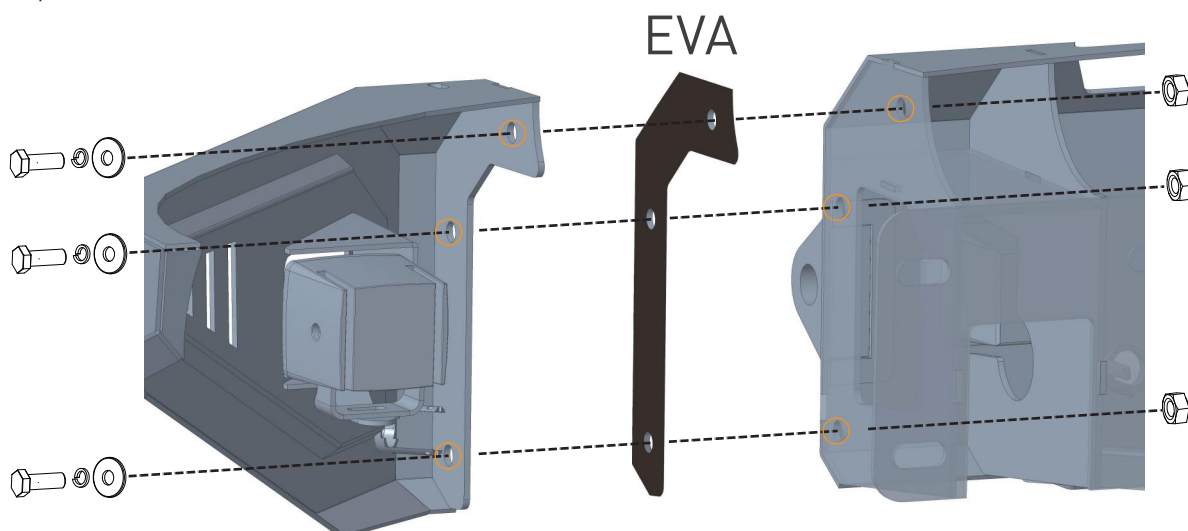
Step 2

First, stick the EVA to the main body. Assemble your Hooke Road bumper. Align the outer profile with the inner profile and tighten the hardware. Repeat this step on the other side of the bumper.

- (6) M12×30 Hex Bolts
- (6) D12 Split Lock Washers

- (6) M12×30×1.5 Flat Washers
- (6) M12 Hex Nuts

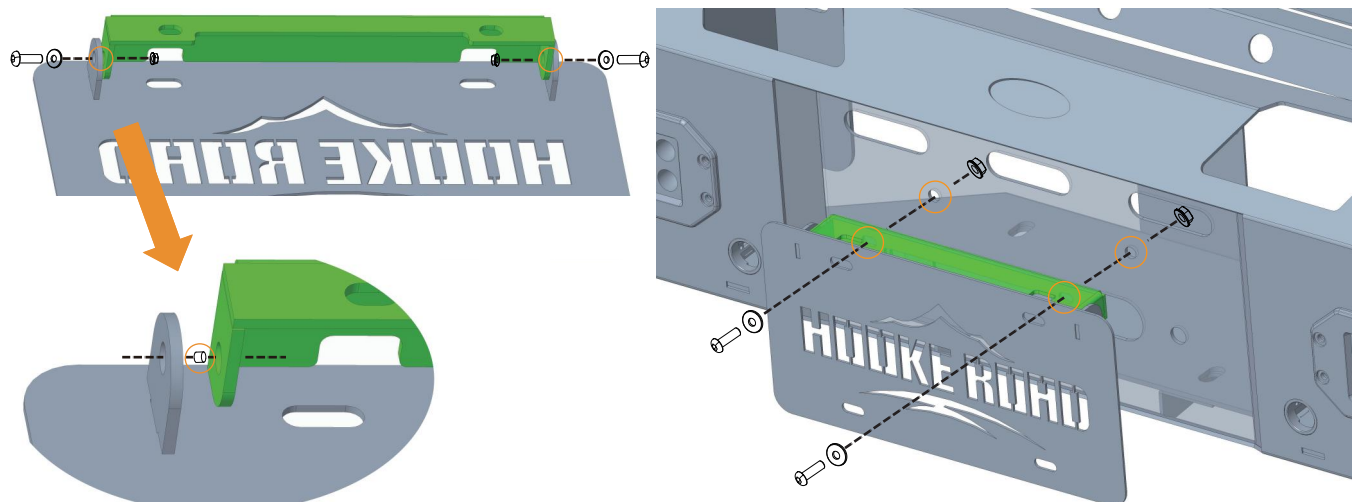
- (2) EVA



Step 3

Assemble the license plate bracket, then secure it to the bumper and tighten the hardware.

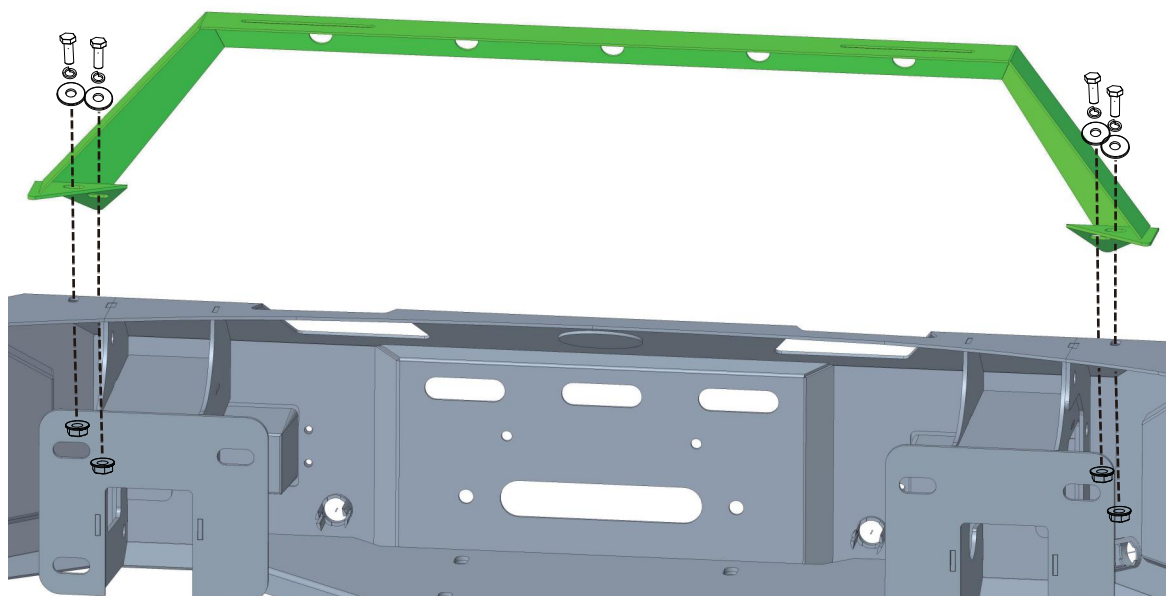
- (4) M6×16 Button Bolts
- (2) M6×12×1.3 Nylon Round Spacers
- (4) M6×12×1 Flat Washers
- (4) M6 Nylon Lock Nuts



Step 4

Secure the bull bar to the bumper and tighten the hardware.

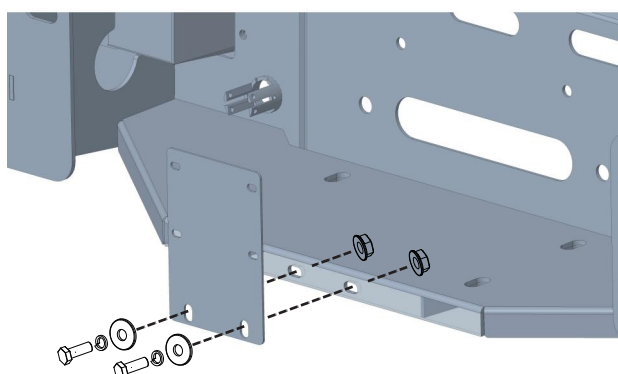
- (4) M8×20 Hex Bolts
- (4) M8 Flat Washers
- (4) D8 Split Lock Washers
- (4) M8 Flange Hex Lock Nuts



Step 5

Secure the winch power control box bracket to the bumper and tighten the hardware.

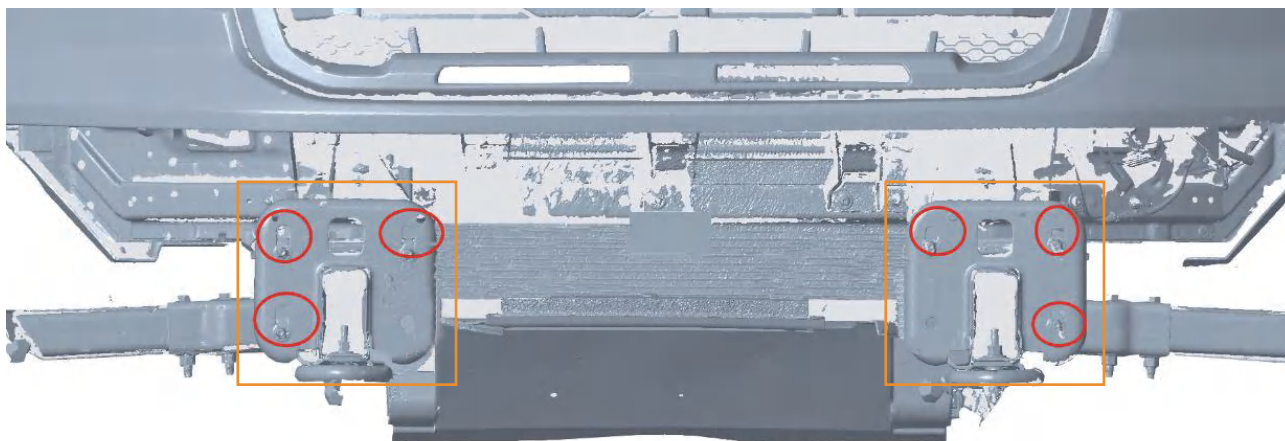
- (2) M8×20 Hex Bolts
- (2) M8 Flat Washers
- (2) D8 Split Lock Washers
- (2) M8 Flange Hex Lock Nuts



Step 6

Secure the bumper to the vehicle frame. Adjust the bumper to the desired position. **Finally, tighten all bolts.**

- (6) M12×35 Hex Bolts
- (6) D12 Split Lock Washers
- (12) M12×30×1.5 Flat Washers
- (6) M12 Hex Nuts

**Step 7**

The installation is complete. We hope you enjoy a wonderful off-road life with this quality Hooke Road product!

