

Focus on  
Every Powerful  
Moment

MUNBYN

Focus on Every Powerful Moment

# Wi-Fi Dongle



Quick Start Guide

☐ White ☒ Black

## CONTENTS

Product Introduction .....	1
Specification .....	2
LED-Screen Status and Port Description ..	3
Product Installation .....	4
Step1 Connect Wi-Fi Dongle to Printer .....	4
Step2 Configure Wi-Fi Settings .....	6
Step3 Print via Wi-Fi Dongle .....	12
FAQ .....	14
Support .....	17

## PRODUCT INTRODUCTION

The user manual download link:  
<https://munbyn.biz/wifidum>

### What's in the box?



① Wi-Fi Dongle      ② Adapter      ③ User Manual

### 1.Supported System

IOS, Android, MacOS, Windows, Linux, ChromeOS

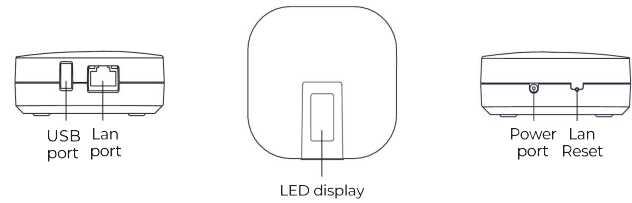
2.Setup Video Guide Link:

For iPhone/iPad printing: <https://munbyn.biz/wifid-ios>  
For Android printing: <https://munbyn.biz/wifid-android>  
For Mac printing: <https://munbyn.biz/wifid-mac>  
For Windows printing: <https://munbyn.biz/wifid-win>  
For ChromeBook printing: <https://munbyn.biz/wifid-chrome>  
For Linux printing: <https://munbyn.biz/wifid-linux>



SPECIFICATIONS

Config Wi-Fi Name	AirBravura-ConfigAP
Config Wi-Fi Password	12345678
Default IP	192.168.101.1
Wi-Fi	2.4GHz, 802.11.b/g/n
Interface	USB 2.0, 10M/100M Ethernet port(RJ45)
Adapter	12v 1A
Dimensions	70*70*30mm

LED-SCREEN STATUS AND PORT DESCRIPTION

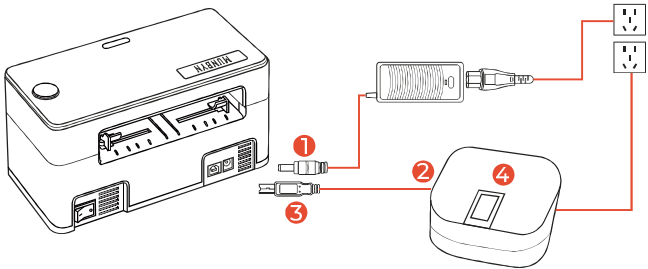


1.Screen Status Description

	Printer data icon
	Wi-Fi signal icon
Status: Idle	Printer Online
Status: Offline	Printer Offline
IP:xxx.xxx.xxx.xxx	IP address after access to LAN
Static:DHCP	Network protocol of LAN

2.Port Description

Power Port	Connect to power adapter
USB Port	Connect to Munbyn printer by USB cable
Lan Port	Connect to RJ45 wired cable (WiFi connection customers do not need to connect). It supports DHCP model.
Reset	Reset all settings. How to use: Insert the end of a small paper clip into the hole, press firmly and hold until LED-screen shows Munbyn logo. Wi-Fi Dongle will restart and restore factory default settings



- 1 Plug power adapter into power port.
- 2 Plug USB cable into the USB Port of Wi-Fi Dongle.
- 3 Plug USB cable into Munbyn printer, and power on printer.
- 4 Wait for about one minute until LED-srreen display logo and items:



PRODUCT INSTALLATION

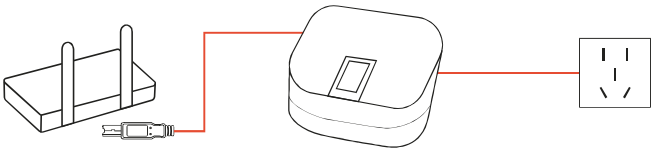
Step1 Connect Wi-Fi Dongle to printer

## Step2 Configure Wi-Fi settings

Wi-Fi Dongle support two ways to connect the network

### 1. Wired cable model

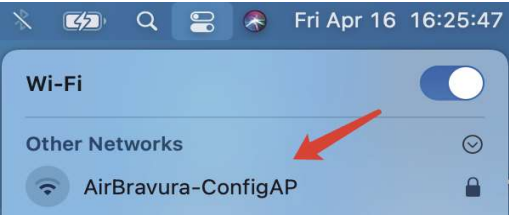
Plug RJ45 wired cable into Lan port, when the IP address is displayed, it indicates that network configuration is successful, please go to step3 to continue. It supports DHCP (Dynamic Host Configuration Protocol).



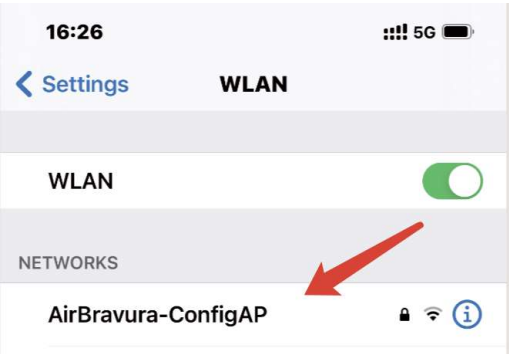
### 2. Wireless model

Tips: Only need to configure Wireless settings for one time, you can use mobile phone (Android/iPhone) or computer device.

2.1 Connect to Wi-Fi network named “AirBravura-ConfigAP” with Password 12345678

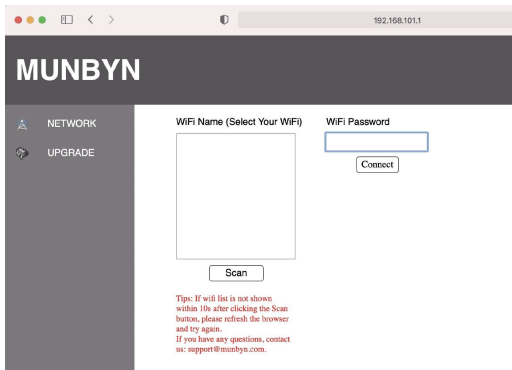


PC



Phone

2.2 Enter 192.168.101.1 in the browser, Click [Scan] to scan Wi-Fi network nearby (if Wi-Fi list is not shown within 10s, please refresh the browser and try again).



PC

8



Phone

9

2.3 When scan is finished, choose Wi-Fi name you want to connect and enter correct password, then click [Connect] button. It will restart after 3 seconds. If you are using phone, please click drop-down list button.

**Note:** The connection here is the wifi name of your router.

MUNBYN

NETWORKUPGRADE

WiFi Name (Select Your WiFi)

G-LinkerRouter

Scan

WiFi Password

Connect

Tips: If wifi list is not shown within 10s after clicking the Scan button, please refresh the browser and try again.  
If you have any questions, contact us: support@munbyn.com.

PC  
10

AA192.168.101.1

MUNBYN

NETWORKUPGRADE

WiFi Name (Select Your WiFi)

G-LinkerRouter

Scan

Tips: If wifi list is not shown within 10s after clicking the Scan button, please refresh the browser and try again.  
If you have any questions, contact us: support@munbyn.com.

WiFi Password

Connect

Done

G-LinkerRouter

Phone  
11

2.4 It will take about 20 seconds to wait until LED-screen display IP address, which indicates that Wi-Fi configuration is successful. Please check the [Status] has become [Idle] when you connect printer to Wi-Fi Dongle. Now you can go to step 3.

**Warning:**

1. Please make sure Wi-Fi Dongle and your phone/computer are connected to the same Wi-Fi network, otherwise you will can't find the printer.
2. After entering 192.168.101.1 in the browser, if it appears that you cannot enter the web page, you need to close the web page and re-enter.

**Tips:** Wi-Fi Dongle supports AP mode. If you don't have wireless router, or you just want to use AP mode, please ensure that the distance between Wi-Fi Dongle and phone/computer does not exceed 2 meters.

## Step 3 Print via Wi-Fi Dongle

**Please watch the video:**

For iPhone/iPad printing: <https://munbyn.biz/wifid-ios>

For Android printing: <https://munbyn.biz/wifid-android>

For Mac printing: <https://munbyn.biz/wifid-mac>

For Windows printing: <https://munbyn.biz/wifid-win>

For ChromeBook printing: <https://munbyn.biz/wifid-chrome>

For Linux printing: <https://munbyn.biz/wifid-linux>

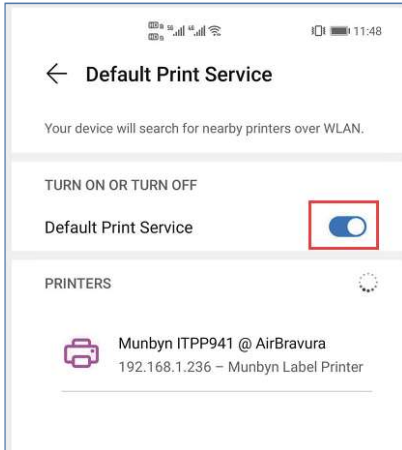
**Reminder:** Printing requires a waiting time of 2 to 10 seconds, depending on your network conditions.

The Wi-Fi dongle will generate heat during use, which is a normal phenomenon during the use of electronic products, please don't worry.



## Q1: Why can't I find or add printer?

A1: Please make sure Wi-Fi Dongle and your phone/computer are connected to the same Wi-Fi network. If you are using Android phone, you should enable "Default Print Service".



14

## Q2: Can I print from my computer and mobile phone at the same time?

A2: Yes! Wi-Fi Dongle supports multiple computers and mobile phones to print at the same time.

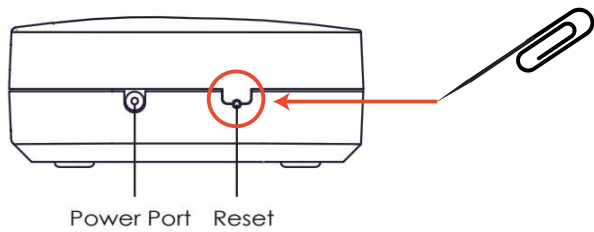
## Q3: Why can't I change paper size in iOS system?

A3: IOS system does not support user-defined paper, please make sure that your printed document should not be larger than 4\*6 inches.

## Q4: The printer suddenly fails to print, or LED-screen can't display IP address.

A4: Check your Wi-Fi network is not disconnected. Or try to reset Wi-Fi Dongle and configure again by these steps: Insert the end of a small paper clip into the hole, press firmly and hold until LED-screen shows Munbyn logo, Wi-Fi Dongle will restart and restore factory default settings.

15



**Q5: Why cannot I get my Wi-Fi list when I visit the IP: 192.168.101.1 ?**

A5: Please make sure Wi-Fi Dongle has connected to Wi-Fi named "AirBravura-ConfigAP", then refresh browser and scan again. If you have connected to the Wi-Fi of your router, you should visit the IP shown in LED-screen instead of IP:192.168.101.1

## SUPPORT

**Need Tech Support, contact us by:**

**E-mail:** support@munbyn.com

**Whatsapp:** +8617817881067

**Skype:** munbyn

**Official website:**

<https://www.munbyn.com/>

**Support time:**

Monday to Friday 24 hours.



## FCC WARNING

This device complies with part 15 of the FCC Rules. Operation is subject to the following two conditions: (1) this device may not cause harmful interference, and (2) this device must accept any interference received, including interference that may cause undesired operation.

Any changes or modifications not expressly approved by the party responsible for compliance could void the user's authority to operate the equipment.

NOTE: This equipment has been tested and found to comply with the limits for a Class B digital device, pursuant to Part 15 of the FCC Rules. These limits are designed to provide reasonable protection against harmful interference in a residential installation. This equipment generates, uses and can radiate radio frequency energy and, if not installed and used in accordance with the instructions, may cause harmful interference to radio communications. However, there is no guarantee that interference will not occur in a particular installation.

If this equipment does cause harmful interference to radio or television reception, which can be determined by turning the equipment off and on, the user is encouraged to try to correct the interference by one or more of the following measures:

- Reorient or relocate the receiving antenna.
- Increase the separation between the equipment and receiver.
- Connect the equipment into an outlet on a circuit different from that to which the receiver is connected.
- Consult the dealer or an experienced radio/TV technician for help.

To maintain compliance with FCC's RF Exposure guidelines, This equipment should be installed and operated with minimum distance between 20cm the radiator your body: Use only the supplied antenna.