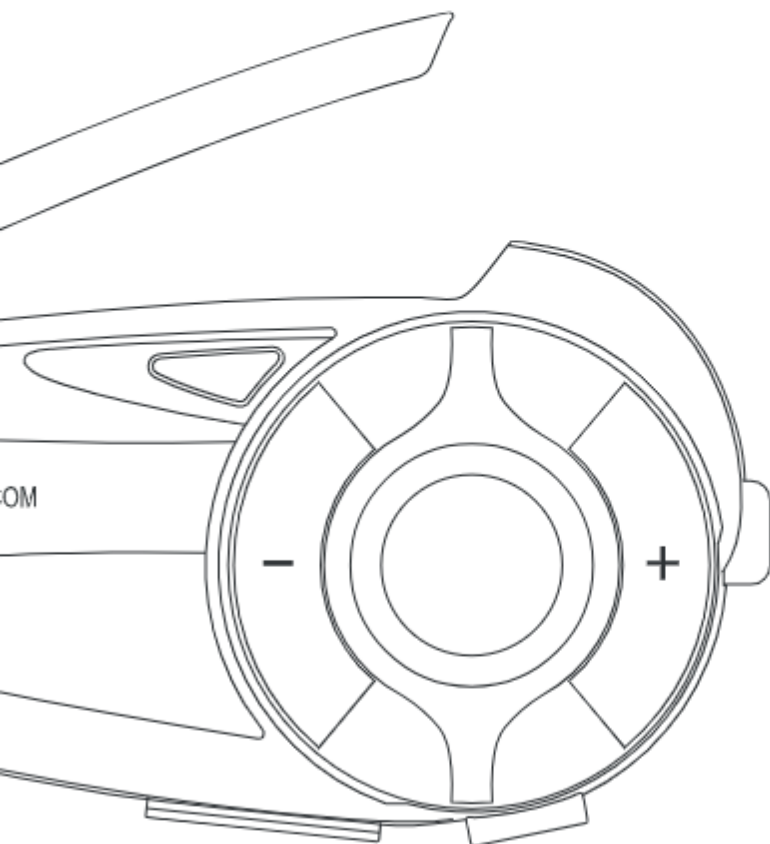


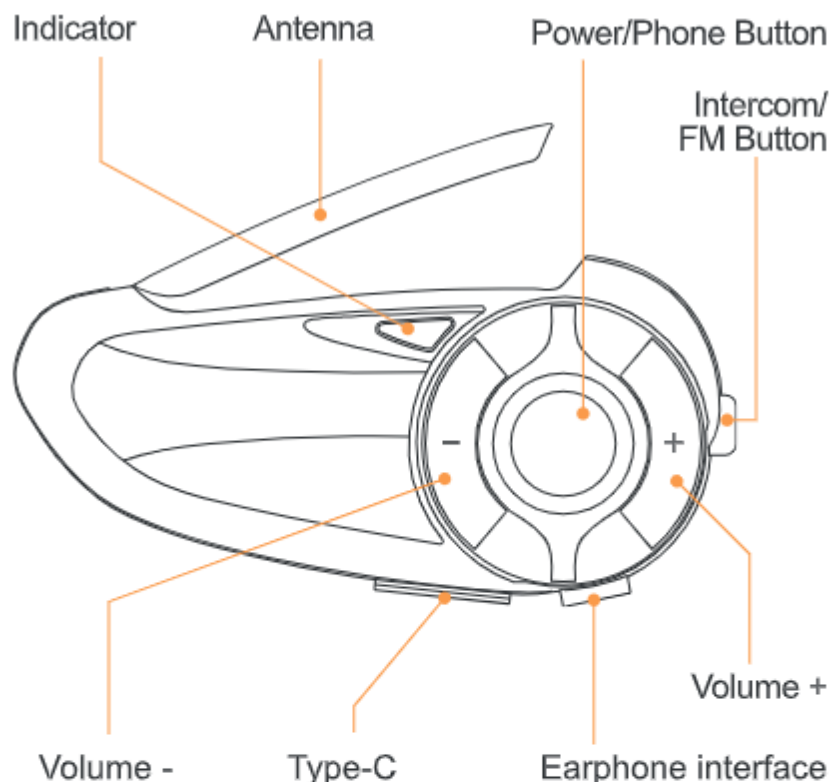
Q2

USER MANUAL

Motorcycle Intercom System



Product Details



Application (APP)

SafeRiding APP supports setting up intercom groups to stay in touch with your friends, and you can also view the product's multi-language user guide and notes, and more features are waiting for you to experience, so you can share the fun of riding instantly! Download the app from ejeas.com/support.

SafeRiding
APP



iOS



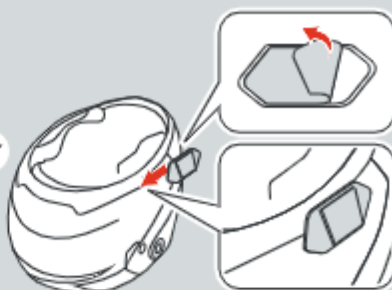
Android

Product Installation

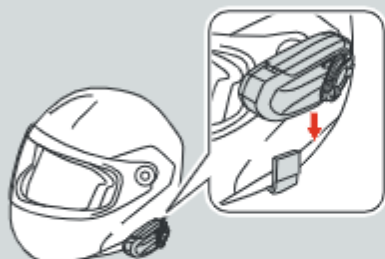
1



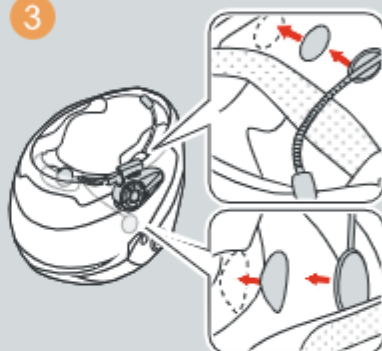
or



2



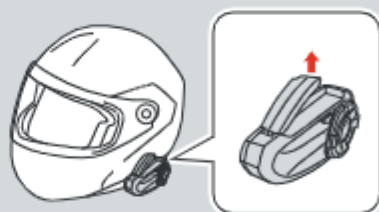
3



4



5



Product Operations

Operation Diagram



Single-click



Double-click



Long press for 5s



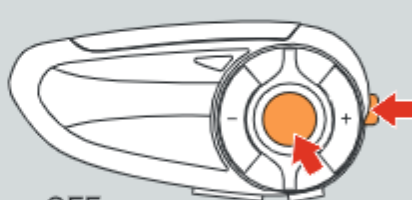
Simultaneous click

Basic Operations

Power ON/OFF Please charge it before using.



ON ? Prompt tone
Standby ? Blue light flashes slowly

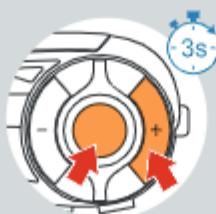


OFF
Press the <Phone Button> and
<Intercom Button> simultaneously.
? Lights off

Battery Level

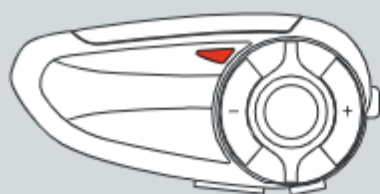


or



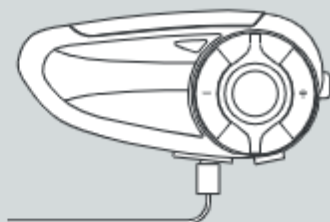
- ? "Battery Level High"
- ? "Battery Level Medium"
- ? "Battery Level Low"

Low Battery Indication



Red light flashes twice
? "Low Battery"

Charging Indication



Charging Red light constantly red
Full The red light out

Volume Control FM and intercom can be used at the same time.

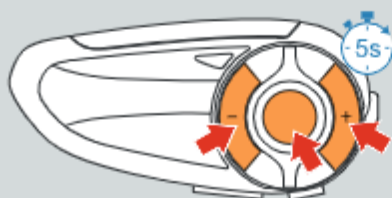
Intercom / Calling / Music / FM



When Intercom & FM use simultaneously, FM volume control



Factory Reset

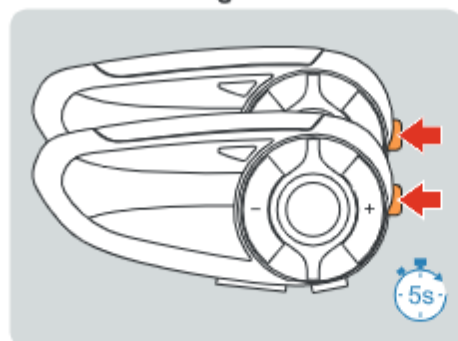


Long press the <Volume +>, <Volume ->, <Phone Button> for 5s at the same time.

The red and blue lights quickly flash four times simultaneously
? "Restore Default Setting"

Bluetooth Intercom

Intercom Pairing



1 Long press the <Intercom Button> for 5s to enter the pairing mode.

Red and blue lights flash fast alternately

⌚ "Intercom Pairing"

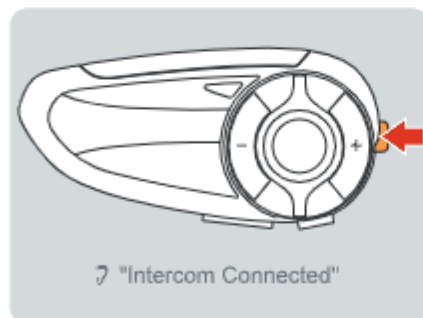
Searching and pairing.

Pairing successfully.

⌚ "Intercom Pairing Successful"

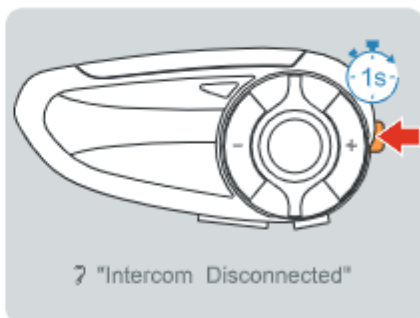
Connected, start communication.

Intercom Reconnection



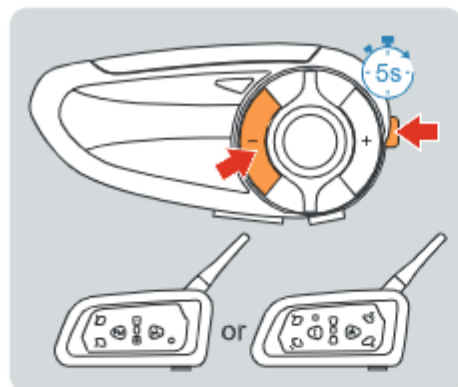
⌚ "Intercom Connected"

Intercom Disconnection



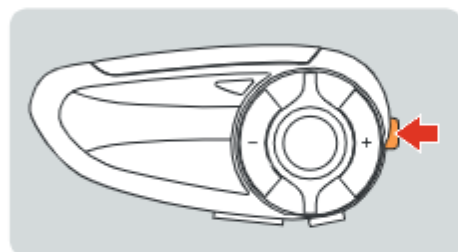
⌚ "Intercom Disconnected"

Compatible with Old Intercom Pairing



- 1 Long press both < Volume - > and <Intercom Button> for 5s, while V4/V6 enter the pairing mode.

Red and blue lights flash fast alternately



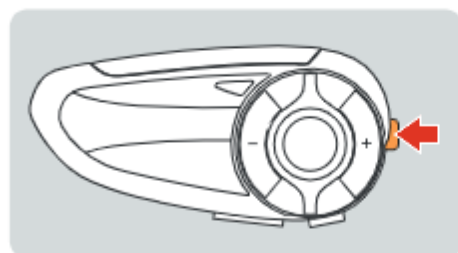
- 2 Click <Intercom Button> enter Bluetooth search mode.

Red and blue lights flash twice alternately

? "Intercom Searching"

Paring successfully.

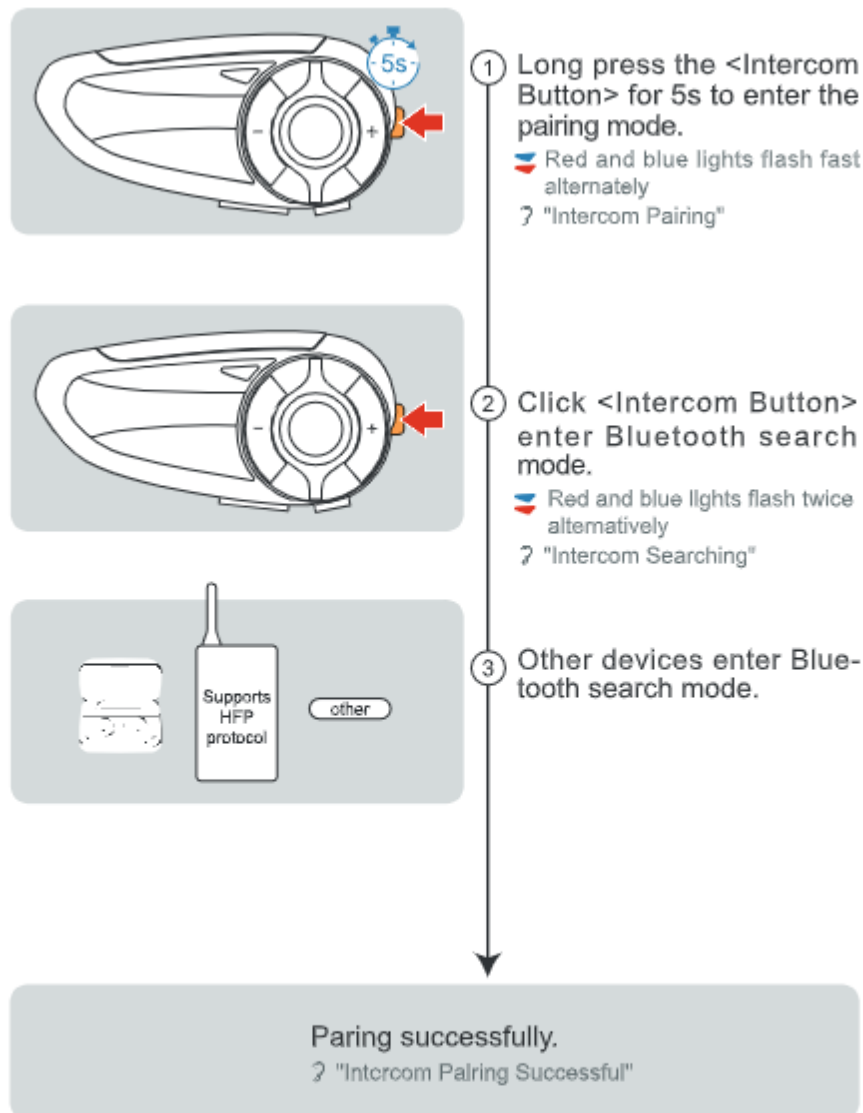
Blue light flashes slowly



- 3 Click <Intercom Button> to connect.

Pairing of Other Bluetooth Devices

This function is not guaranteed to be compatible with all Bluetooth headsets or Bluetooth intercom on the market.



Reject a Call



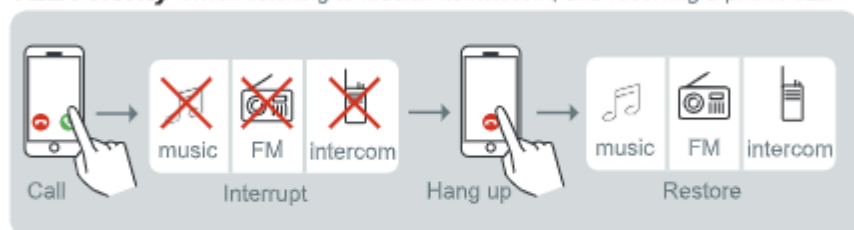
Last Call Replay



End a Call

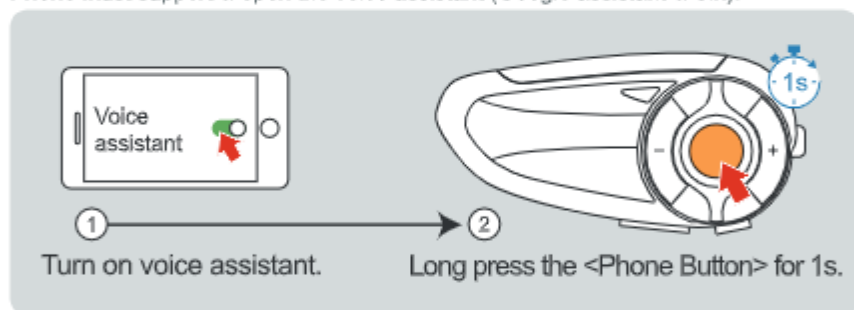


TEL Priority When listening to music/FM/intercom, and receiving a phone call.



Voice assistant

Phone must support & open the voice assistant (Google assistant & Siri).



Music Control

Music Play/Pause



Music Switching



FM Radio

FM ON/OFF 76~108MHz

Auto search and radio, intercom and radio could working at the same time.



Double click <FM Button> to open FM.

Blue light is always on for 4s

Red light double flashes quickly

♪ "FM Radio"

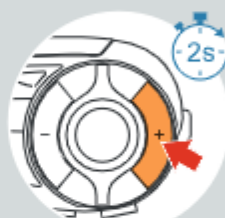
Double click <FM Button> to close FM.

♪ "FM Radio Off"

Frequency Switching



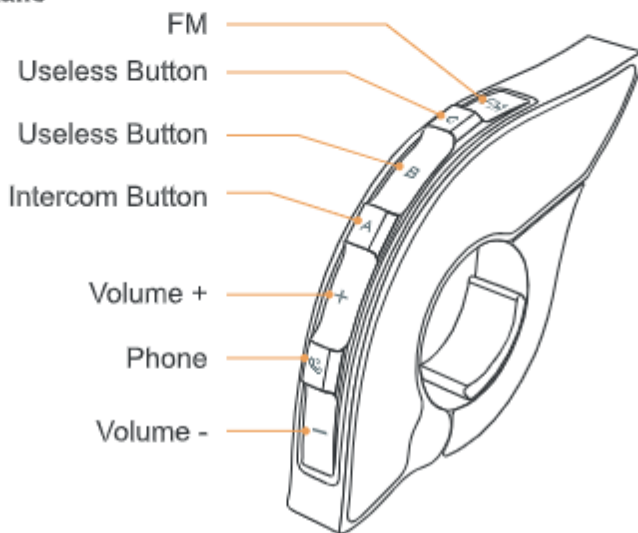
Frequency -



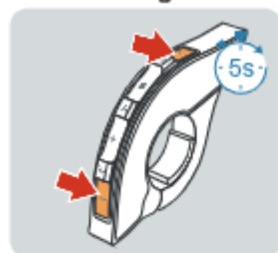
Frequency +

EUC Remote Control (Optional)

EUC Details



EUC Pairing



- ① Long press both <FM Button> and <Volume -> of EUC for 5s to clear the pairing record of EUC.

Red and Blue lights consistently on



- ② Long press both <Phone Button> and <Volume -> for 5s.

Red and blue lights flash alternately and quickly
? "Remote Control Pairing"



- ③ Click any key of EUC.

Pairing Successfully ? "Pairing Successful"

(If EUC cannot be successful paired in 2 mins, it will automatically exit the pairing mode.)

FM ON/OFF



Click <FM Button> to open FM.

Click <FM Button> to close FM.

NOTE: This equipment has been tested and found to comply with the limits for a Class B digital device, pursuant to part 15 of the FCC Rules. These limits are designed to provide reasonable protection against harmful interference in a residential installation. This equipment generates uses and can radiate radio frequency energy and, if not installed and used in accordance with the instructions, may cause harmful interference to radio communications. However, there is no guarantee that interference will not occur in a particular installation. If this equipment does cause harmful interference to radio or television reception, which can be determined by turning the equipment off and on, the user is encouraged to try to correct the interference by one or more of the following measures:

- Reorient or relocate the receiving antenna.
- Increase the separation between the equipment and receiver.
- Connect the equipment into an outlet on a circuit different from that to which the receiver is connected.
- Consult the dealer or an experienced radio/TV technician for help

Changes or modifications not expressly approved by the party responsible for compliance could void the user's authority to operate the equipment. This device complies with Part 15 of the FCC Rules. Operation is subject to the following two conditions:

- (1) this device may not cause harmful interference, and
- (2) this device must accept any interference received, including interference that may cause undesired operation