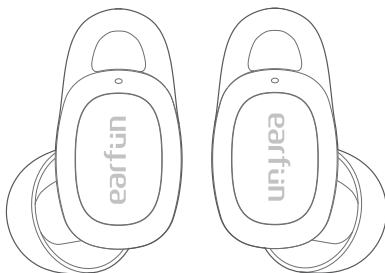


earfun

EarFun Free Pro

ANC Wireless Earbuds



BC



User Manual

1 What's in the Box

EN

EarFun Free Pro



Charging Case



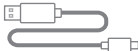
Ear Tips (XS, S, M, L)



Ear Hooks (S, M, L)



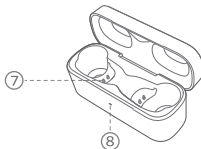
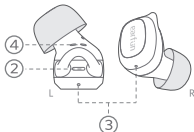
USB-C Cable



User Manual



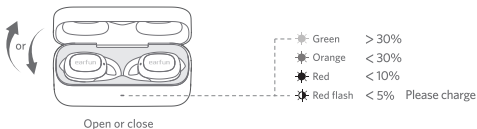
2 Product Diagram



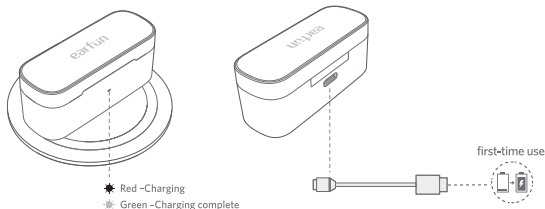
- ① Touch multifunction control
- ② LED indicator
- ③ Microphone
- ④ Charging contactor
- ⑤ USB-C charging port
- ⑥ Charging case
- ⑦ Charging dock
- ⑧ Charging case indicator

3 Charging

1. Open or close the charging case to activate the LED battery indicator.
2. Remove the film on the earbuds when taking them out of the charging case for the first time.
3. Fully charge both the earbuds and the charging case before the first-time use.
4. The charging case must be closed that earbuds can start charging.
5. Fully dry off the earbuds and the USB port before charging.



1. Use wireless charging pad(not included) for charging.
2. Connect USB-C cable for charging.

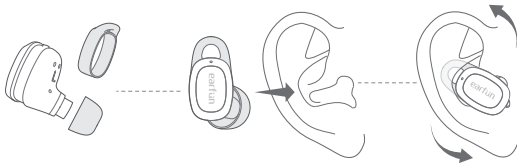


④ Specifications

Bluetooth version	V5.2
Bluetooth frequency	2.402GHz-2.48GHz
Bluetooth profile	A2DP, AVRCP, HFP, HSP
Maximum working range	15m(without obstacle)
Battery capacity	50mAh x 2(earbuds); 400mAh(charging case)
Charging time	1 hour(for earbuds); 2 hours(for charging case via USB-C); 3.5 hours(for charging case via wireless charger)
Playtime	ANC OFF--Up to 7 hours, Totally 32 hours with the charging case; (varies by volume level and audio content) ANC ON--Up to 6 hours, Totally 27 hours with the charging case; (varies by volume level and audio content)
Input	DC 5V / 1A
Dimenitions	67mm x 25mm x 31mm
Weight	42g

⑤ How to Fit

Note: If the earbuds is not worn correctly, it may affect the noise cancelling effect.



1. Choose the ear tips and ear hook that fit you the best. If you couldn't use the ear hook, please choose the one without the wing.
2. Identity the left and the right earbuds.
3. Insert the earbuds into the canal of your ears, the ear hook should also be inserted into the upper canal of your ears.
4. Turn and find the most comfortable position.

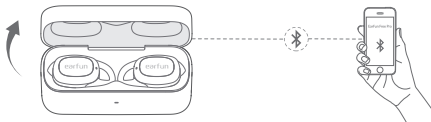
6 Pairing Your Earbuds

1. First time pairing with device

Step 1: Open the charging case, earbuds will automatically power on and enter into pairing mode.

Step 2: Activate Bluetooth on your Bluetooth-enabled device and search for other Bluetooth devices.

Step 3: Select "EarFun Free Pro" from the list of Bluetooth devices shown (if a password is needed, type '0000').



Notes:

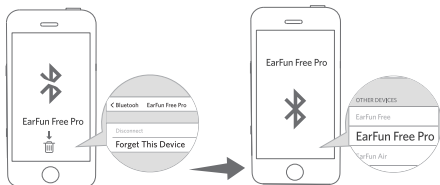
- The earbuds will automatically connect with the device they were last paired with when the case is opened.
- Each earbud could be used independently.

2. Connect to a New Device

Option A

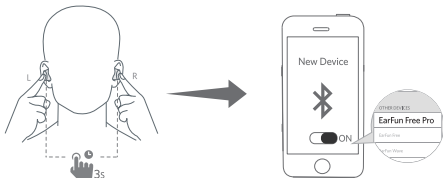
Step 1. Unpair the earbuds from the Bluetooth-enabled device that's connected. The earbuds will disconnect from the current device and enter into pairing mode for another pair.

Step 2. Search on the new device and connect.



Option B

- Step 1. Make sure the earbuds are powered on, and then touch and hold the both earbuds button at the same time for at least 3 seconds until they flash in blue light, after that the earbuds will enter into pairing mode.
- Step 2. Search the new device and connect.

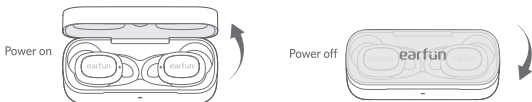


7 Functions

Power on/off

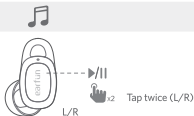
Open the charging case, the earbuds will automatically power on.

Place the earbuds back into the charging case. Close the case and the earbuds will automatically power off.



Playing music

Play/Pause



Next track



Volume up



Volume down



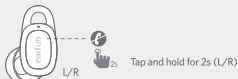
Hands free conversation



Answer/End a call



Reject a call



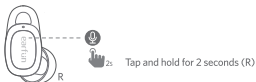
Answer and transfer two calls




Activate the voice assistant




Voice assistant




Noise cancelling control



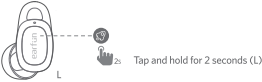
Noise cancelling
Ambient sound
Normal



Low Latency control



Low Latency ON/OFF



Notes:

- Turn on the low latency mode will provide latency within 100ms and improve the movie and video experience, but it will shorten the connection distance. We suggest you turn off the low latency mode when you use the earbuds for music.
- The normal mode provide latency about 200ms.
- Bluetooth technology can't eliminate latency.

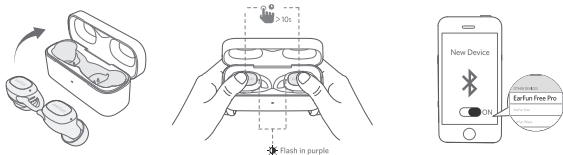
8 Earbuds LED Indicator

Power on	Blue indicator flashes 1 second
Power off	Red indicator flashes 1 second
Pairing mode	Indicator flashes blue
Successfully connected	Indicator goes out
Factory reset	Indicator flashes in purple

9 Reset and Reconnecting

If you fail to build connection between two earbuds, or between earbuds and Bluetooth device, please try the following steps:

1. Place both earbuds into the charging case.
2. Keep the charging case open, then touch and hold the button on each earbud at the same time for at least 10s until they flash in purple then earbuds have been reset successfully.
3. Delete the old connection from the Bluetooth device and reconnect "EarFun Free Pro".



10 Troubleshooting

Q: Can I use both earphones separately?

A: Yes, each earbud could be used independently.

Q: The earphones are turning on, but it doesn't connect to my device?

A: To connect the earbuds to your device, please check if the Bluetooth of the device is on at first, then select 'EarFun Free Pro' on the Bluetooth list to get paired. If the earbuds still can't connect to your device, please try to reset it, or contact our customer support.

Q: Why the connection is not stable and cuts out intermittently?

A: Please make sure there are no objects between the earphones and your Bluetooth device, and make sure there is no radio or WIFI interference nearby.

Q: What is the range of Bluetooth earphones?

A: Bluetooth earphones have maximum range of 49 feet (15m, no obstacle). However, the actual range will depend on usage and environment.

Q: Is there volume control on the earphones?

A: Yes, touch L earbud once decreases the volume and touch R once could increase it.

Q: My earphones will not switch on.

A: Please recharge it and make sure it has enough battery power. If it is fully charged and still nothing happens or if you are not able to charge the unit, please contact our customer support for warranty cover.

Q: Is the charging case waterproof?

A: No, the earbuds are IPX5 sweat & waterproof, but the charging case is not waterproof.

Q: Will the earbuds shut off automatically?

A: The earbuds will remain on as long as they are connected to a device. If no audio is in use, they will enter power-saving mode and wake up once audio is played. If the earbuds are not connected with any devices, they will automatically shut off in 30 minutes.

FCC Statement

Changes or modifications not expressly approved by the party responsible for compliance could void the user's authority to operate the equipment.

This equipment has been tested and found to comply with the limits for a Class B digital device, pursuant to Part 15 of the FCC Rules. These limits are designed to provide reasonable protection against harmful interference in a residential installation. This equipment generates uses and can radiate radio frequency energy and, if not installed and used in accordance with the instructions, may cause harmful interference to radio communications. However, there is no guarantee that interference will not occur in a particular installation. If this equipment does cause harmful interference to radio or television reception, which can be determined by turning the equipment off and on, the user is encouraged to try to correct the interference by one or more of the following measures:

- Reorient or relocate the receiving antenna.
- Increase the separation between the equipment and receiver.
- Connect the equipment into an outlet on a circuit different from that to which the receiver is connected.
- Consult the dealer or an experienced radio/TV technician for help.

This device complies with part 15 of the FCC rules. Operation is subject to the following two conditions:

- (1) This device may not cause harmful interference.
- (2) This device must accept any interference received, including interference that may cause undesired operation.

CAUTION

Danger of explosion if battery is incorrectly replaced.

Replace only with the same or equivalent type.

the battery shall not be exposed to excessive heat such as sunshine, fire or the like



To prevent possible hearing damage, do not listen at high volume levels for long periods.



The Bluetooth® word mark and logos are registered trademarks owned by Bluetooth SIG, Inc. and any use of such marks by Earfun Technology(HK) Limited is under license.

Other trademarks and trade names are those of their respective owners.

EU Declaration of Conformity

EarFun Technolohg(HK) Limited hereby declares that this equipment is in compliance with the essential requirements and other relevant provisions of Directive 2014/53/EU and RoHS 2011/65/EU Directive. The declaration of conformity may be consulted in the support section of our Web site, accessible from www.myearfun.com

NCC聲明：

取得審驗證明之低功率射頻器材，非經核准，公司、商號或使用者均不得擅自變更頻率、加大功率或變更原設計之特性及功能。低功率射頻器材之使用不得影響飛航安全及干擾合法通信；經發現有干擾現象時，應立即停用，並改善至無干擾時方得繼續使用。前述合法通信，指依電信管理法規定作業之無線電通信。低功率射頻器材須忍受合法通信或工業、科學及醫療用電波輻射性電機設備之干擾。

應避免影響附近雷達系統之操作

型號/MODEL: TW301

FCC ID: 2AVIT-TW301



211-200914