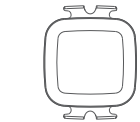
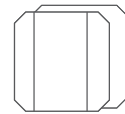


USER MANUAL

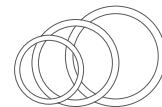
Standard Accessories



Speed / Cadence
Sensor x 1



Rubber Mat
(Flat x 1, Curved x 1)



Band
(Large x 2, Medium x 2,
Small x 2)



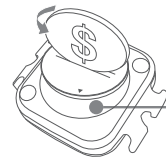
User Manual x 1

- 2 -

Product Introduction

BK467 measures speed or cadence in real time and it sends speed or cadence data to app or bike computer. This user manual will help you to use the product better, please keep it for reference.

Remove the Insulation Sheet



1. Twist the battery cover with a coin in OPEN direction, open the battery cover, remove the battery

2. Take out the insulating sheet

- 3 -

Function and Operation

BK467 has speed mode and cadence mode. You can switch the mode by rebooting.

Mode switching

- a Twist the battery cover with a coin in OPEN direction, open the battery cover, remove the battery and install it again, after that, twist the battery cover in CLOSE direction, close the battery cover.



- b After the battery installed, there will be a light on. Red light indicates speed mode, and blue light indicates cadence mode.

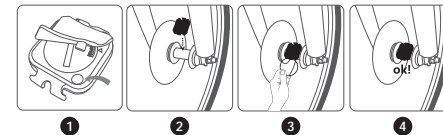


- 4 -

Installation

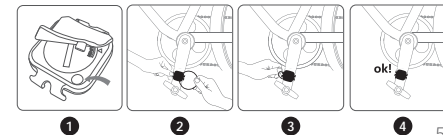
- a Installation for speed mode

Buckle the curved rubber mat onto the back of the sensor, then bind the sensor with the large rubber band onto the wheel axle.



- b Installation for cadence mode

Buckle the flat rubber mat onto the back of the sensor, then bind the sensor with the small rubber band onto the pedal crank.



- 5 -

Specifications

| | |
|---------------------|------------------|
| Weight | 9.5 g |
| Battery Life | 300 hours |
| Battery Type | CR2032 220mAh |
| Waterproof | IP67 |
| Wireless | Bluetooth & ANT+ |
| Size | 41 x 34 x 10 mm |
| Max Speed | 120 km/h |
| Max Cadence | 300 rpm |
| Working Temperature | -10°C ~ 50°C |
| Color | Black |

Applicable Smart Phones

- IOS 7.0 or above, iPhone 4s model or above
- Android 4.3 or above with Bluetooth 4.0

- 6 -

Compatible Apps

CoospoRide, Wahoo, Openrider, Zwift, MAP MY RIDE+, or other Apps with speed/cadence feature.

Disclaimer

- The information contained in this manual just for reference. The product described above may be subject to alteration owing to the manufacturer's continuing research and development plans, without making an announcement in advance.
- We shall not make any statement or warranty about this manual.

- 7 -