

LA380W Open-Ear Wireless Headphones

Preface

Dear Customer,
Thanks for purchasing our product. Read this manual thoroughly to use the product properly.
If you have any questions or suggestions, please contact our local sales service.

Features

- Ø14.2mm dynamic driver with bass enhancement for balanced sound.
- Open-ear design for ambient listening, keeping ears fresh during workouts.
- Wireless V5.3 connection for fast, stable connections.
- Dual-device connectivity for seamless audio switching.
- Enjoy music all day with 30 hours of battery life total.
- IPX4 protection against sweat and light splashes.
- Adjustable ergonomic ear hooks for long-lasting comfort..

Applications

Outdoor activities, commuting, and music enjoyment.

Package Contents

- 2 × Earbud
- 1 × Charging Case
- 1 × Charging Cable
- 1 × User Manual

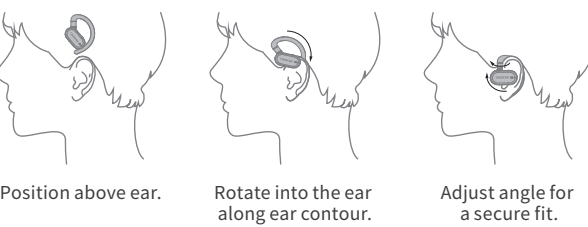
LA380W Open-Ear Wireless Headphones

Specifications

- Wireless Version: V5.3
 - Operating Frequency: 2400-2483.5MHz
 - Driver Diameter: Ø14.2mm dynamic
 - Frequency Response: 20Hz - 20kHz
 - Impedance: 32Ω ± 15%
 - Max Output Power: 20mW
 - Rated Output Power: 10mW
 - Microphone Type: Silicon mic
 - Polar Pattern: Omnidirectional
 - Sensitivity: -38dB ± 3dB
 - Headphone Battery: 3.7V/60mAh
 - Charging Case Battery: 3.7V/600mAh
 - Charging Method: USB 5V/600mA
 - Charging Time: Headphones approx. 1.75H, charging case approx. 1.5H
 - Battery Life: Headphones approx. 7.5H, total approx. 30H with case
 - Weight (Single Earbud): Approx. 10g
 - Weight (Charging Case): Approx. 56.5g
 - Transmission Range: 15m (open space)
- Note:
1) The above data are measured by Takstar laboratory which has the final interpretation right!
2) Actual battery life may vary based on factors such as volume, audio source, interference, and device differences.
3) Transmission range may change due to obstacles, surrounding magnetic fields, and static electricity between devices.

LA380W Open-Ear Wireless Headphones

Wearing Illustration

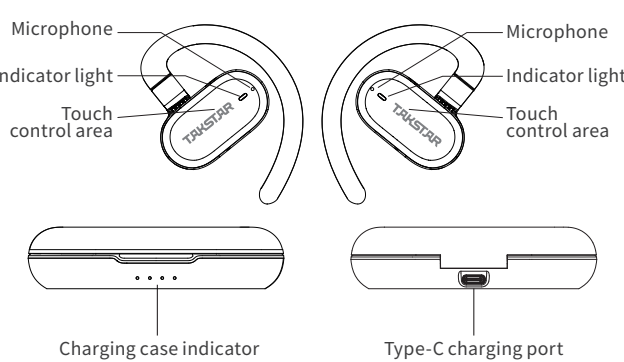


IPX4 Protection

This product is water and sweat-resistant, tested under controlled lab conditions to meet GB/T4208-2017 standards for IPX4 (equivalent to IEC IPX4: protection against splashing water from any direction with no harmful effects).
The water and sweat-resistant features are not permanently effective and may diminish due to daily wear. These features apply to the headphone body and do not extend to the charging case. Do not submerge the headphones or charging case in water or rinse them under running water, and avoid spilling liquids into the charging case to prevent liquid ingress. Suitable liquids include freshwater, tap water, and sweat, but they do not protect against other liquids (e.g., soapy water, cleaning solutions, water with body wash, shampoo, hot spring water, hot water, and seawater).

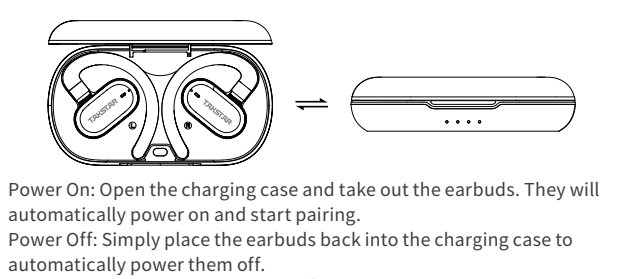
LA380W Open-Ear Wireless Headphones

Function Descriptions



Operating Instructions

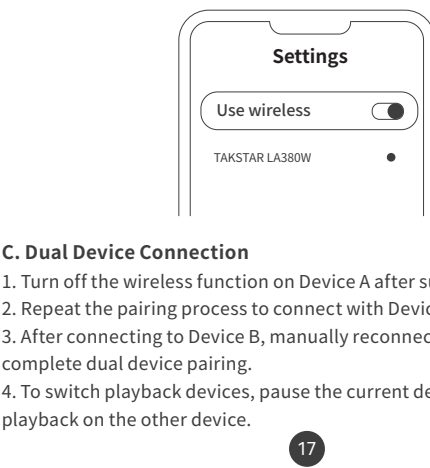
A. Power On/Off



LA380W Open-Ear Wireless Headphones

B. Wireless Pairing

When using the earbuds for the first time, you need to pair and connect them with your smartphone or wireless playback device. Follow these steps:
1. Take the earbuds out of the charging case. They will automatically power on and start pairing.
Note: To reconnect to another device, place the earbuds in the charging case and press the pairing button for 3 seconds until the headphone indicator light flashes white to restart pairing.
2. Open the Settings menu on your smart device and navigate to the wireless connection list. Search for TAKSTAR LA380W and select it for connection. You will hear a confirmation sound when successfully connected.



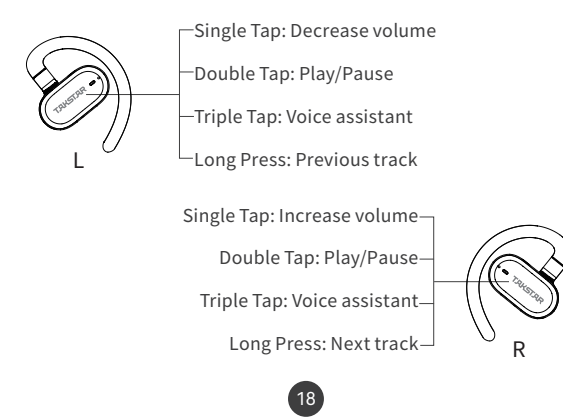
LA380W Open-Ear Wireless Headphones

Notes:

1. The headphones have a memory function and will auto reconnect to the last paired device upon powering on.
2. If disconnected or out of range, reconnection time is 3 minutes; after this, the headphones will auto power off.
3. To reconnect to other devices, place the headphones in the charging case, press the case button for 3 seconds until the white indicator flashes, entering pairing mode.
4. Dual device connection will automatically occur on the next power-on if both devices are within range, requiring no repeat actions.

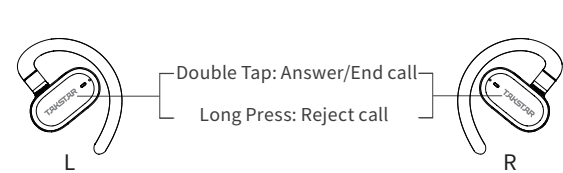
D. Touch Control Operations

1. Media Control

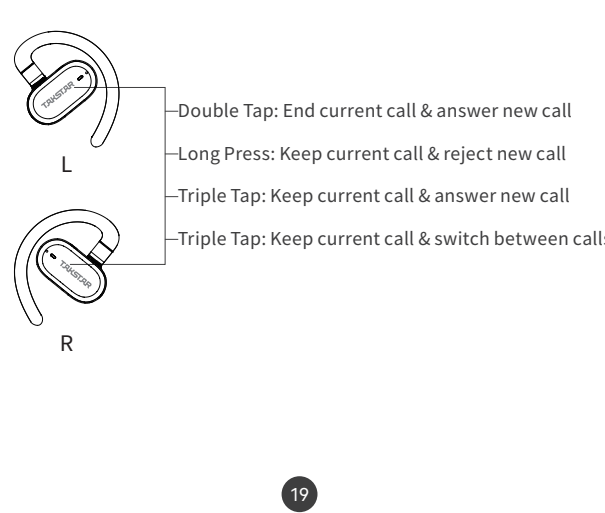


LA380W Open-Ear Wireless Headphones

2. Dual Call



3. Three-Way Call (Incoming call during an ongoing dual call)



LA380W Open-Ear Wireless Headphones

E. Battery Status and Charging

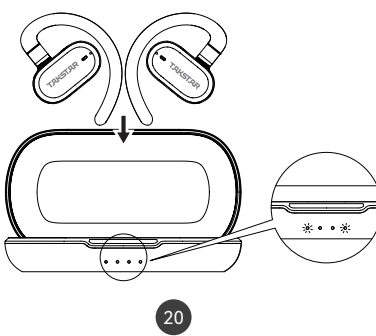
Battery Display

• Opening or closing the charging case shows battery status.

Light Status	Battery Level
1 Light	0%-25% remaining
2 Light	25%-50% remaining
3 Light	50%-75% remaining
4 Light	75%-100% remaining

Headphone Charging

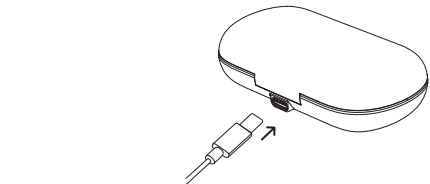
• Place headphones in the magnetic slot of the charging case and close the lid to initiate charging automatically. The left and right charging case indicator lights correspond to the charging status of the left (L) and right (R) headphones.
Charging: Indicator light breathes slowly.
Fully charged: Indicator light turns off.



LA380W Open-Ear Wireless Headphones

Charging Case Charging

• Use the supplied charging cable to charge the case.
Charging: Indicator lights illuminate sequentially.
Fully Charged: All indicator lights remain on.
Note: Charging must be done with a 5V output adapter; do not use adapters exceeding 5V to avoid damage. For optimal charging efficiency, it is recommended to use an adapter with an output current of 1A or higher.



F. Resetting

To reset the headphones, place them in the charging case and press the pairing button for 10 seconds until the headphone indicator light turns off, clearing all pairing information and entering pairing mode again.

Correct Operation

For safe and comfortable operation, please read carefully and abide by the following items:
1. To avoid hearing loss, set the volume of the player to minimum before connecting the headset. After putting the earphone on, increase the volume to a proper level. Noise is measured in decibels (dB). Any outside noise of 85 decibels or more will cause gradual hearing loss.
2. Please pay attention to your operation habits! Volume and duration are proportional to hearing loss. The higher the volume, the shorter the time you should listen; the more comfortable the volume is, the longer you can listen. Listening at high volume for long will cause damage to your hearing.

LA380W Open-Ear Wireless Headphones

This dB level chart compares some common noise sources and their potential danger to your hearing:

Sound Source	Noise Level	Consequence on Hearing
Whisper	30dB	Very quiet
Quiet office	50-60dB	Comfortable hearing level is below 60dB
Vacuum cleaner/ hair dryer	70dB	Somewhat invasive and may interfere with phone calls
Food processor	85-90dB	85dB (continuously 8 hours) will begin to hurt hearing
Garbage cleaning machine/ cement mixer	100dB	Exposure to sound of 90-100dB is suggested to be within 15 minutes if without protection
Electric saw/ electric drill	110dB	Frequent exposure to over 100dB for more than 1 minute can impair hearing
Rock concert (subjective)	110-140dB	Painful hearing starts at about 120dB

Maintenance

1. Please keep it in a dry and clean environment. During operation, prevent damage from water ingress, drop or collision.
2. Operating the headset in high temperature or high humidity for long can lead to device damage or shortened service life.
3. Keep the headset away from strong magnet to avoid demagnetizing and decreased sensitivity and performance.

LA380W Open-Ear Wireless Headphones

4. Do not use strong chemical or detergent for cleaning.
5. Do not scratch the product surface with sharp objects.
6. Store in a clean, dry area if not used for a long period. Keep and use away from areas of high temperature and humidity.

Cautions

⚠ DANGER

To ensure your personal safety, do not wear or place the headset too close to the pacemaker (less than 10cm).	⊘ Prohibited
Do not insert the cable plug into live power socket.	⊘ Prohibited
For your safety and the safety of other traffic participants, do not use the headset while driving a vehicle, riding a bicycle or walking on the road.	🛑 Follow
Keep away from fire to avoid explosion.	⊘ Prohibited

⚠ WARNING

Not a toy. Children should not use without adult supervision.	🛑 Follow
Abide by relative safety rules during operation. Do not use it if prohibited by laws and regulations to avoid accident.	🛑 Follow

LA380W Open-Ear Wireless Headphones

Safety Instructions

To avoid electric shock, overheat, fire, radiation, explosion, mechanical risk and injury or property loss due to improper use, please read and observe the following items before use:
1. Please check if the power of the connected equipment matches with that of this product before operation. Adjust the volume to proper level during operation. Do not operate at over-power or high-volume level for extended time to avoid product malfunction.
2. If there is any abnormality during use (e.g., smoke, strange odor), please kill the power switch and unplug from power source, then send the product to the local after-sales service for repair.
3. Keep this product and its accessories in a dry and ventilated area. Do not store in a humid or dusty area for extended time. Keep away from fire, rain, liquid intrusion, bumping, throwing, vibrating, or from blocking any ventilation openings, to prevent malfunction.
4. The product must, when installed on walls or ceilings, be fixed firmly in place at adequate strength to prevent from falling.
5. Please abide by safety rules during operation. Do not use the product in places prohibited by laws or regulations to avoid accident.
6. Do not disassemble or repair the product by yourself to avoid injury. If you have any questions or require any services, please contact our local after-sales service.

LA380W Open-Ear Wireless Headphones

Label Meanings

CE This device is compliant with the limits of the European Council Directive on the approximation of the laws of the member states relating to electromagnetic compatibility according to RL2004/108/EG and European Low Voltage Directive RL2006/95/EG.

FC This device complies with part 15 of the FCC Rules. Operation is subject to the following two conditions: (1) This device may not cause harmful interference, and (2) this device must accept any interference received, including interference that may cause undesired operation.

Any Changes or modifications not expressly approved by the party responsible for compliance could void the user's authority to operate the equipment.

Note: This equipment has been tested and found to comply with the limits for a Class B digital device, pursuant to part 15 of the FCC Rules. These limits are designed to provide reasonable protection against harmful interference in a residential installation. This equipment generates uses and can radiate radio frequency energy and, if not installed and used in accordance with the instructions, may cause harmful interference to radio communications. However, there is no guarantee that interference will not occur in a particular installation. If this equipment does cause harmful interference to radio or television reception, which can be determined by turning the equipment off and on, the user is encouraged to try to correct the interference by one or more of the following measures:

LA380W Open-Ear Wireless Headphones

- Reorient or relocate the receiving antenna.
- Increase the separation between the equipment and receiver.
- Connect the equipment into an outlet on a circuit different from that to which the receiver is connected.
- Consult the dealer or an experienced radio/TV technician for help.

1) FCC Radiation Exposure statement

The device has been evaluatec to meel general RF exposure requirement. The device can be used in portable exposure condition without restriction.
FCC ID: WRALA380W

⚠ This symbol indicates that this product should not be disposed of with your household waste, according to the WEEE directive (2012/19/EU) and your national law. This product should be handed over to an authorized collection site for recycling waste electrical and electronic equipment (WEEE). Improper handling of this type of waste could have a possible negative impact on the environment and human health due to potentially hazardous substances that are generally associated with WEEE. At the same time, your cooperation in the correct disposal of this product will contribute to the effective usage of natural resources. For more information about where you can drop off your waste equipment for recycling, please contact your local city office, waste authority, or your household waste disposal service.

LA380W Open-Ear Wireless Headphones

About This Manual

This manual contains up-to-date technical specifications as of printing. However, specifications contained herein may not conform to your particular product since Takstar is constantly improving its products. Also, specifications, devices or accessories available may vary from region to region. If you have any questions, please contact our local sales outlet. For the latest version/more information, please visit our website: <https://www.takstar.com/>
Copyright ©2024 TAKSTAR. TAKSTAR, 得胜 and their respective logos are registered trademarks or trademarks of Guangdong Takstar Electronic Co., Ltd. in the PRC, and/or other countries. All other trademarks are the property of their respective owners.