



# PLASMA CUTTING TABLE/WORKBENCH - ADJUSTABLE HEIGHT WITH CASTOR WHEELS

MODEL NO: **PCT2**

Thank you for purchasing a Sealey product. Manufactured to a high standard, this product will, if used according to these instructions, and properly maintained, give you years of trouble free performance.

**IMPORTANT:** PLEASE READ THESE INSTRUCTIONS CAREFULLY. NOTE THE SAFE OPERATIONAL REQUIREMENTS, WARNINGS & CAUTIONS. USE THE PRODUCT CORRECTLY AND WITH CARE FOR THE PURPOSE FOR WHICH IT IS INTENDED. FAILURE TO DO SO MAY CAUSE DAMAGE AND/OR PERSONAL INJURY AND WILL INVALIDATE THE WARRANTY. KEEP THESE INSTRUCTIONS SAFE FOR FUTURE USE.



Refer to  
instructions



Wear protective  
gloves



Wear safety  
footwear

## 1. SAFETY

- ☐ **WARNING! Ensure Health & Safety, and local authority regulations are adhered to when assembling and using the workbench.**
- ✓ Locate workbench in a suitable area where it will not be an obstruction.
- ✓ Keep the general area clean, uncluttered and ensure there is adequate lighting.
- ☐ **WARNING! Erect unit on a level and solid surface such as concrete.**
- ✓ Keep children and unauthorised persons away from the work area.
- ✗ **DO NOT** use the unit for any purpose other than that for which it is designed.
- ✗ **DO NOT** clean the unit with any solvents which may damage the surfaces.
- ✓ Ensure that the unit is properly and securely assembled before use.

## 2. INTRODUCTION

Mild steel plasma cutting table/workbench. 32 Replaceable cutting slats, order Model No. PCT2RS for a pack of 10 replacements. Removable side handles/cable tidy hanging hooks. Adjustable working height 750mm to 1011mm. Lockable castor wheels for easy movement. Funnel shaped base with slide out tray for safe removal of offcuts and slag. Supplied flat packed for easy self assembly using hand tools (not provided). Supports weight capacity of 136kg.

## 3. SPECIFICATION

Model No.: ..... PCT2  
Max. weight capacity..... 136 kg  
Height range ..... 750 - 1011 mm  
Assembled dimensions (W x D) ..... 1200 x 910 mm  
Bench dimensions..... 915 x 910 mm  
Replacement parts: Slats (pack of 10) ..... PCT2RS



## 4. CONTENTS

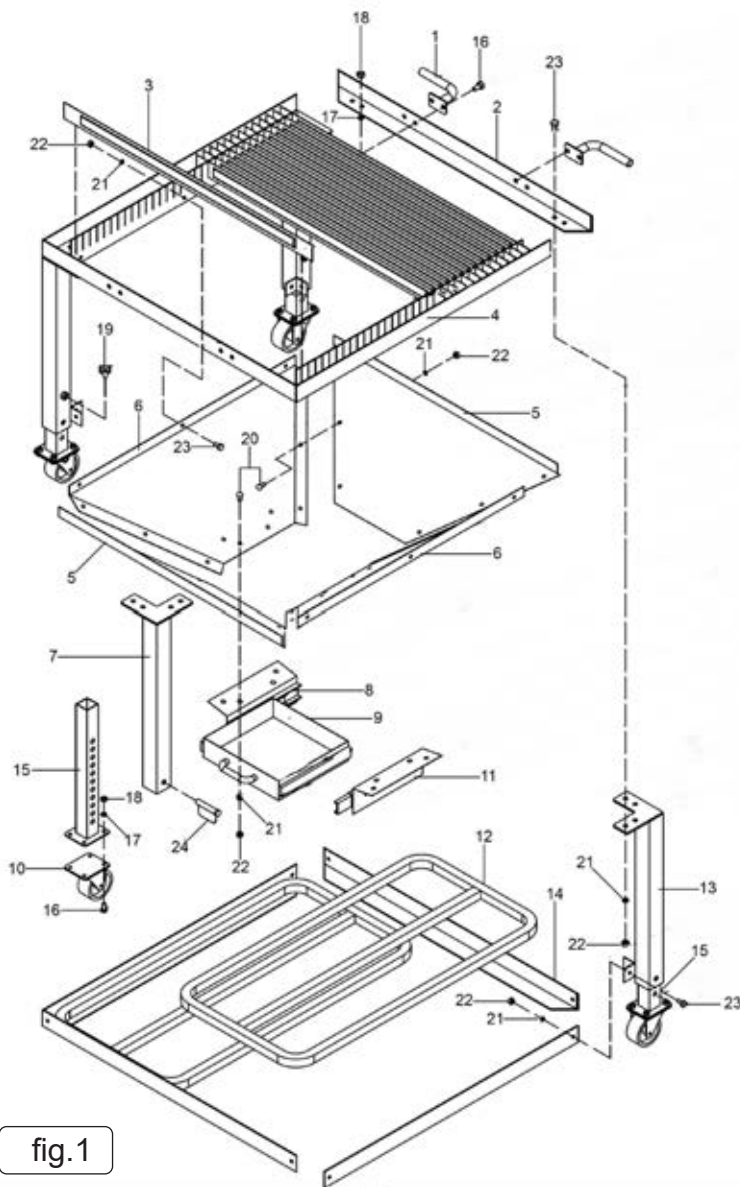


fig.1

Item	Part no.	Description
1	PCT2.01	Removable side handles
2	PCT2.02	Main beam, A
3	PCT2RS	Replacement slats (Pack of 10)
4	PCT2.04	Main beam, B
5	PCT2.05	Funnel side plate, A
6	PCT2.06	Funnel side plate, B
7	PCT2.07	Foot support, A
8	PCT2.08	Drawer support, A
9	PCT2.09	Drawer
10	PCT2.10	Wheel (c/w brake)
11	PCT2.11	Drawer support, B
12	PCT2.12	Platform base
13	PCT2.13	Foot support, B
14	PCT2.14	Support beam
15	PCT2.15	Foot link
16	SS1025.S	Hx Hd Set Screw M8 x 25 mm
17	SWM10.S	Spring washer M10
18	SN10.S	Steel nut M10
19	SS1040.S	Hx Hd Set Screw M10 x 40 mm
20	PCT2.20	Button hd set screw M8 x 25
21	SWM8.S	Spring washer M8
22	SN8.S	Steel nut M8
23	SS830.S	Hx Hd Set Screw M8 x 30 mm
24	PCT2.24	Foot support pin

## 5. ASSEMBLY

**NOTE:** It is recommended that two people are used to assemble this item.

**NOTE: DO NOT** fully tighten fixings until all are in place.

- 5.1. Assemble foot links (fig1.15) to wheels (fig1.10) using fixings (fig1.16, 1.17, and 1.18).
- 5.2. Fix support beams (fig1.14) to tabs on foot support beams (items fig1.13 and fig1.7).
- 5.3. Fix main beams (fig1.2, fig1.4) to top of foot supports using fixings (fig1.21, 1.22, 1.23). Note positioning of main beams (see fig1).
- 5.4. Tilt the assembly and locate the assembled foot links (from 5.1 above) into the foot supports and fit foot support pins (fig1.24).
- 5.5. Lay platform bases (fig1.12) into lower section (see fig1).
- 5.6. Fix funnel side plates to main beams (fig1.2, fig1.4) using fixings (fig1.21, 1.22, 1.23). Note positioning of side plates (see fig1).
- 5.7. Fix drawer supports (fig1.8, fig1.11) using fixings (fig1.20, 1.21, 1.22) (see fig1.).
- 5.8. Fix side handles (fig1.1) using fixings (fig1.16, 1.17, 1.18).
- 5.9. Load slats (fig1.3) into top frame.
- 5.10. Insert drawer (fig1.9) onto drawer runners in drawer supports (fig1.8, fig1.11).
- 5.11. Tighten all fixings and ensure the structure is sound, stable and capable of safely carrying a load of up to 138 kg.

## 6. MAINTENANCE

- 6.1. Clean regularly using non-abrasive cleaner and a damp cloth.
- 6.2. Before each use check all parts and the integrity of the structure. If damaged or suspect, remove from service and take necessary action to correct.

Parts support is available for this product. Please email [sales@sealey.co.uk](mailto:sales@sealey.co.uk) or telephone 01284 757500



#### ENVIRONMENT PROTECTION

Recycle unwanted materials instead of disposing of them as waste. All tools, accessories and packaging should be sorted, taken to a recycling centre and disposed of in a manner which is compatible with the environment. When the product becomes completely unserviceable and requires disposal, drain any fluids (if applicable) into approved containers and dispose of the product and fluids according to local regulations.

**Note:** It is our policy to continually improve products and as such we reserve the right to alter data, specifications and component parts without prior notice.

**Important:** No Liability is accepted for incorrect use of this product.

**Warranty:** Guarantee is 12 months from purchase date, proof of which is required for any claim.

**Sealey Group, Kempson Way, Suffolk Business Park, Bury St Edmunds, Suffolk. IP32 7AR**



**01284 757500**



**01284 703534**



**[sales@sealey.co.uk](mailto:sales@sealey.co.uk)**



**[www.sealey.co.uk](http://www.sealey.co.uk)**