

Adapet CGM A1

 **Adapet**
All-in-one Pet CGM System

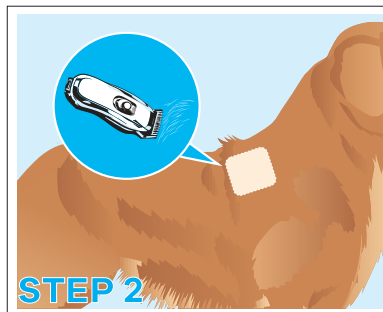


1 Apply Sensor near the back of the pet's neck area.

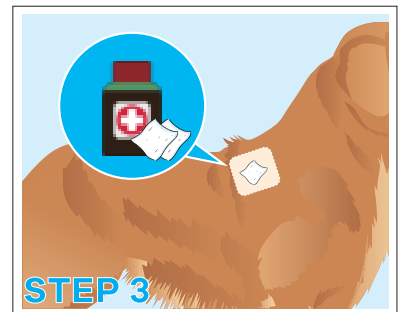
Get Ready



Select a location above the shoulder blade, near the back. Do not use other sites as these may result in inaccurate glucose readings. Note: Avoid scars, lumps, lacking fat and insulin injection sites. To prevent skin irritation, rotate sites between applications.

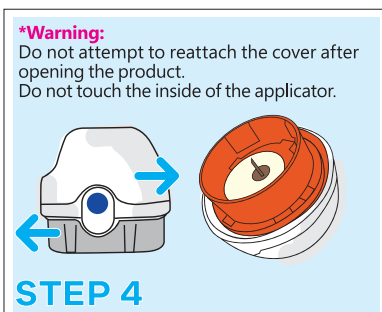


After selecting the placement area, use clippers to shave a 4cm by 4cm square area.



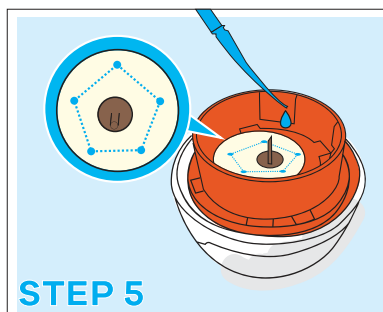
Wash hands using a plain soap, dry, and then clean the area with alcohol wipe. Allow site to air dry before proceeding.

Apply Sensor

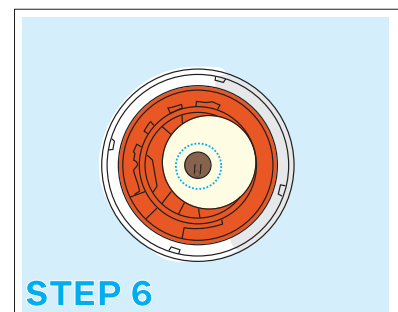


***Warning:**
Do not attempt to reattach the cover after opening the product.
Do not touch the inside of the applicator.

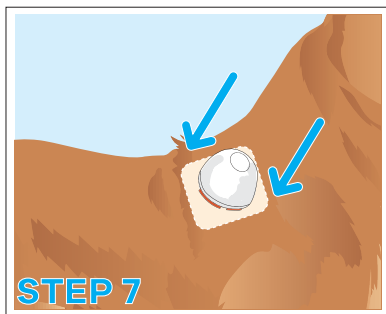
Peel lid completely off Sensor Pack. Unscrew cap from Sensor Applicator.
a. Rotate the cap of the applicator in the direction indicated by the picture
b. Remove the bottom cover to expose the applicator.



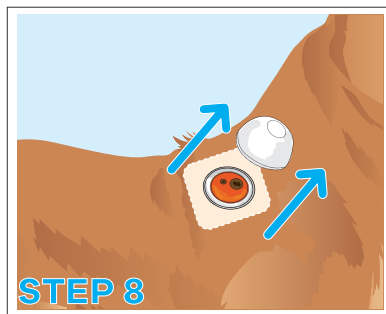
Apply veterinary bio-adhesive around probe, placing one drop of adhesive at the top end of the probe and two drops each on the left and right sides.



Sensor Applicator is ready to apply Sensor.
CAUTION: Sensor Applicator now contains a needle. Do not touch inside Sensor Applicator or put it back into Sensor Pack.



Place the applicator against the chosen site. Press downward the product shell with vertical force (you'll hear the clicking sound).
CAUTION: Do not push down on Sensor Applicator until placed over prepared site to prevent unintended results or injury.



Wait 20 seconds and gently pull Sensor Applicator away from your pet's body.



Make sure Sensor is secure. Discard used Sensor Applicator and Sensor Pack according to local regulations.

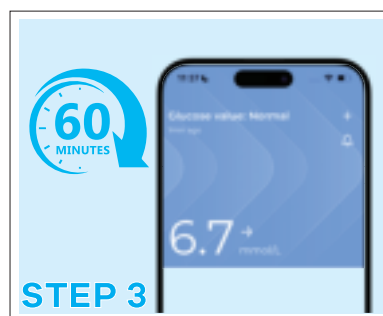
2 Start new Sensor with APP



Scan QR Code to Download the APP



Open the phone's camera, point it at the QR code on the bottom of packaging to activate the product sensor. Once the activation is successful, the app page will display a success message.



After 60 minutes, blood glucose data will be displayed.

Warnings

WARNING: Use protective measures like clothing, harnesses, vests, or cones to ensure Adapet A1 stays on for 9 days. Pets may remove it by biting or scratching.

WARNING: Do not adjust insulin therapy based on unexpected glucose readings without verifying them with a Blood Glucose Meter.

WARNING: Skin irritation from the adhesive pad is rare but possible. Use at your own risk.

WARNING: Accuracy may vary in the hypoglycemic range due to CGM technology limitations.

WARNING: Do not use the product past the expiration date.

Information

WARRANTY: Adapet Medical INC warranty covers factory defects only. Human or pet error is not included.

RECYCLING: Adhere to local laws for recycling. The applicator and sensor contain plastics, metals, and electronics.

HOW IT WORKS: A 7-8mm electrode in the interstitial fluid interacts with glucose, generating current, which is converted into blood glucose levels and shown on the web portal and app.

Specifications

Sensor Life: Up to 9 days
Reading Intervals: Every 3 minutes
Glucose Range: 40-540 mg/dL
Bluetooth Range: 16+ feet
Water Resistance: IP28
Operating Temperature: 41°F to 104°F
Sensor Size: 30x25x3.5 (mm)
Sensor Weight: 3.6g
Shelf Life: 12 months
Power Source: 3V lithium battery
Atmospheric Pressure: 70 kPa to 104 kPa

Support

A help section can be found in the adapet app, in the veterinary web portal, and on www.adapetcg.com

For further support email info@adapetmedical.com or call 604-565-0058 between the hours of 9am and 8pm EST.

Created By

Adapet Medical INC.
1600 Derwent Wy Unit 11,
Delta, BC V3M 6M5
www.adapetcg.com

FCC statement:
Changes or modifications not expressly approved by the party responsible for compliance could void the user's authority to operate the equipment.
This device complies with Part 15 of the FCC Rules. Operation is subject to the following two conditions: (1) this device may not cause harmful interference, and (2) this device must accept any interference received, including interference that may cause undesired operation.
This equipment has been tested and found to comply with the limits for a Class B digital device, pursuant to part 15 of the FCC Rules. These limits are designed to provide reasonable protection against harmful interference in a residential installation. This equipment generates, uses and can radiate radio

frequency energy and, if not installed and used in accordance with the instructions, may cause harmful interference to radio communications. However, there is no guarantee that interference will not occur in a particular installation. If this equipment does cause harmful interference to radio or television reception, which can be determined by turning the equipment off and on, the user is encouraged to try to correct the interference by one or more of the following measures:
—Reorient or relocate the receiving antenna.
—Increase the separation between the equipment and receiver.
—Connect the equipment into an outlet on a circuit different from that to which the receiver is connected.

—Consult the dealer or an experienced radio/TV technician for help.
IC statement:
This device contains license-exempt transmitter(s)/receiver(s) that comply with Innovation, Science and Economic Development Canada's license-exempt RSS(s). Operation is subject to the following two conditions:
(1) This device must not cause interference.
(2) This device must accept any interference, including interference that may cause undesired operation of the device.
L'appareil contient un émetteur / récepteur exempté de licence conforme au CNR exempté de licence d'innovation, sciences et développement économique Canada