



RENLICON
OUTFITTING YOUR ADVENTURES

Out-In-About **BOX™ 2.0**

Part: 000-RN-17057

Manual Number – 941



RENLICON
OUTFITTING YOUR ADVENTURES

1445 Fortress St., Chico, CA 95973 • (530) 893-5244

WWW.RENLICON.COM

©2024 Renlicon. All Rights Reserved.



Welcome Your New Out-in-About Box™ 2.0!

**Thanks for purchasing the
Out-In-About Box™ 2.0, your
upgraded storage solution!**

Designed for effortless organization and built to withstand the rigors of off-road adventures, this box keeps your gear secure, organized, and always within reach.

This instruction sheet provides the necessary information for the assembly of the Renlicon Out-In-About Box™ 2.0. If you need any additional information or any help along the way, please contact our Customer Service team at (530) 893-5244.

WHAT YOU'LL NEED

Before you begin assembling your Out-In-About Box™ 2.0, please take a moment to review the assembly instructions carefully and verify that all parts are included in your kit. If you have any questions or discover any missing or damaged components, please contact our Renlicon Team at (530) 893-5244—we're here to help!

TOOLS

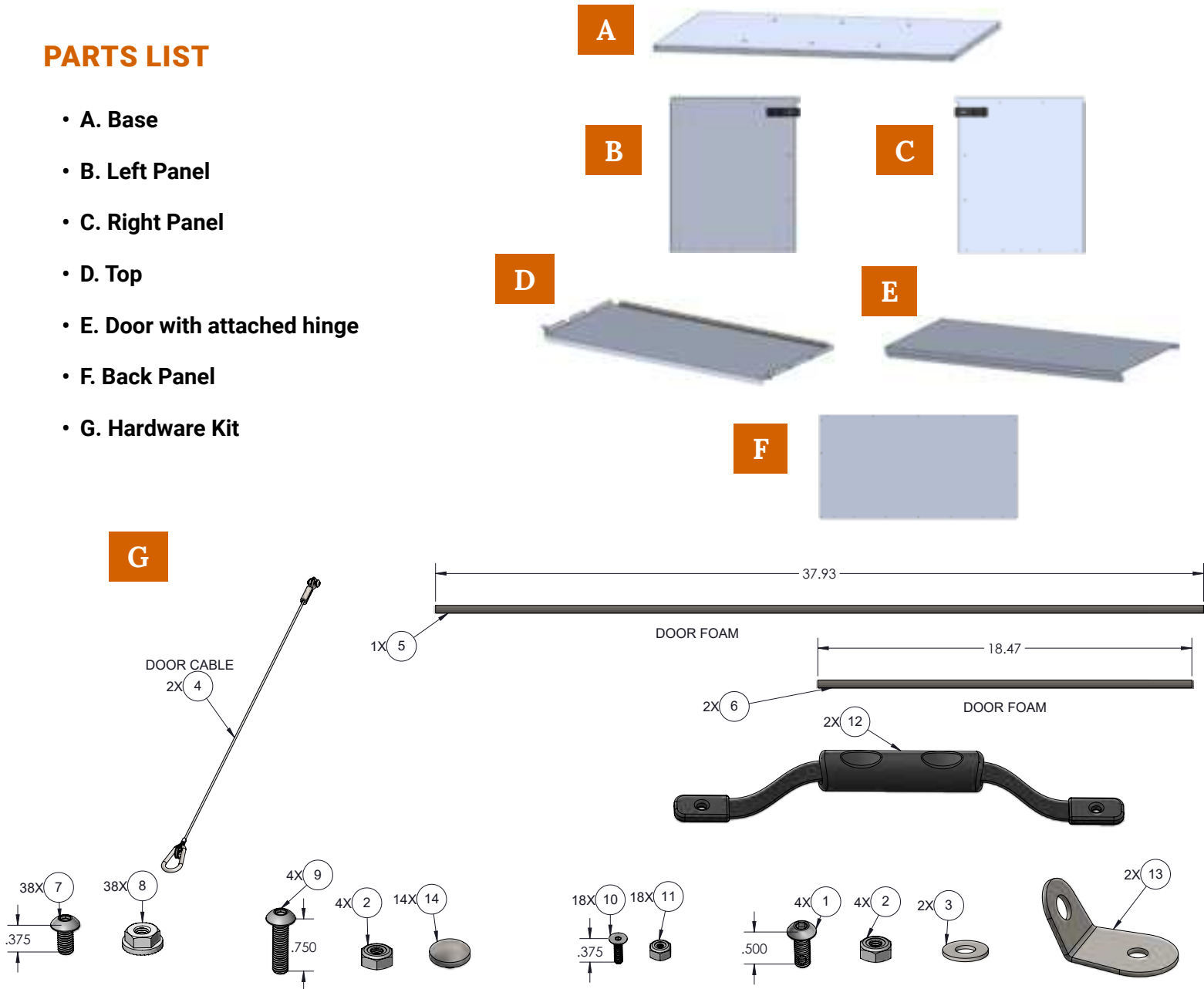
- 1/16" Hex Key – Used on door assembly
- 1/8" Hex Key
- 1/4" Wrench – Used on door assembly
- 3/8" Wrench
- Gloves



NOTICE: This product is protected by state common law, copyright and/or patent. All legal rights therein are reserved. The design, layout, dimensions, geometry, and engineering features shown in this product are the exclusive property of Renlicon. This product may not be copied or duplicated in whole or part, abstractly or fundamentally, intentionally, or fortuitously, nor shall any design, dimension, or other information be incorporated into any product or apparatus without prior written consent of Renlicon.

PARTS LIST

- A. Base
- B. Left Panel
- C. Right Panel
- D. Top
- E. Door with attached hinge
- F. Back Panel
- G. Hardware Kit



| ITEM | DESCRIPTION | QTY |
|------|---|-----|
| 1 | 18-8 SS THREAD LOCK BUTTON 10-32 X 1/2" | 4 |
| 2 | 18-8 SS NYLOCK NUT 10-32 | 8 |
| 3 | #10 FLAT WASHER | 2 |
| 4 | WIRE ROPE STAY ASM | 2 |
| 5 | 3/4" D-SHAPED SEAL, SPONGE RUBBER | 1 |
| 6 | 3/4" D-SHAPED SEAL, SPONGE RUBBER | 2 |
| 7 | 18-8 SS 10-32 X 3/8" | 38 |

| ITEM | DESCRIPTION | QTY |
|------|--|-----|
| 8 | 10-32 SERRATED FLANGE LOCKNUT | 38 |
| 9 | 18-8 SS BUTTON HEAD 10-32 X 3/4" | 4 |
| 10 | 3-48 X 3/8" SCREW W/82 DEGREE COUNTERSINK | 18 |
| 11 | 18-8 SS NYLOCK 3-48 NUT | 18 |
| 12 | 11.5" BLACK NYLON WEBBING HANDLE W/END CAP | 2 |
| 13 | OIAB CABLE MOUNT | 2 |
| 14 | PUSH IN RUBBER BUMPER .201 ID DOMED | 14 |

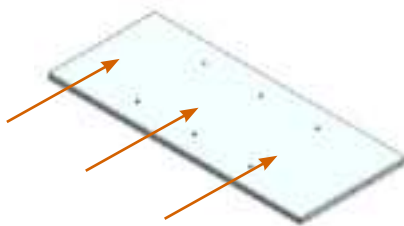
ASSEMBLY STEPS

Gloves are recommended for assembly. Remove protective coating from panels as you assemble.

The Frame of the Out-In-About Box™ 2.0

1. Place the Base [A] on a flat, solid surface. Flanges pointed downward, smooth side up. The long side with 18 small holes is the front of the box

DIAGRAM A



2. Stand Base [A] on the long side, with the front facing up. See Diagram B for guidance.
3. Line up the Left Panel [B] with the pre-drilled holes of the Base [A]. The latch on Left Panel [B] should be facing up, towards the front of the box. The flange on the Left Panel [B] fits over the flange on the Base [A]. See Diagram B for guidance.
4. Using the 1/8" Hex Key, 3/8" Wrench, and 4 Short Button Head Bolts [7] and 4 Serrated Flange Locknuts [8] attach the Left Panel [B] to the Base [A]. Use the two holes on the top, and two holes on the bottom. The center holes are for use with the Table Accessory (sold separately). See Diagram B for guidance.

DIAGRAM B



5. Using the 1/8" Hex Key, 3/8" Wrench, and 4 Short Button Head Bolts [7] and 4 Serrated Flange Locknuts [8], repeat steps 2 – 4 for the Right Panel [C]. Ensure the latch on the Right Panel [C] is facing up, towards the front of the box. Use the predrilled holes to attach – leaving the center holes for the Table Accessory. See Diagram C below for guidance.

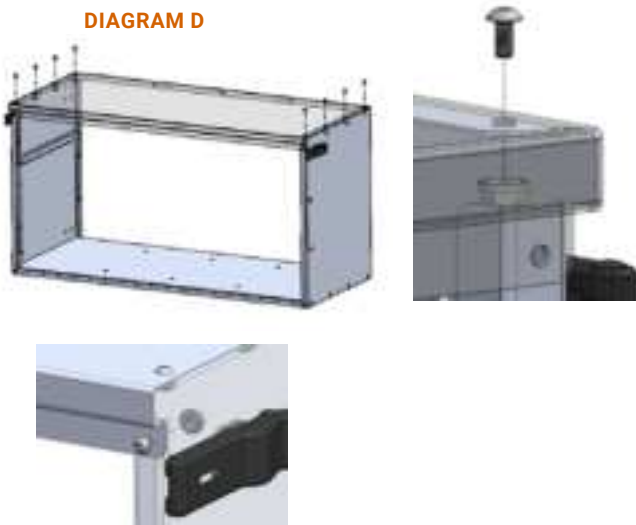
DIAGRAM C



6. Rotate the attached Base [A], Left Panel [B], and Right Panel [C] so the Base [A] is on a solid, flat surface. See Diagram D for guidance.
7. Place the Top [D] on the box frame with the flanges facing down. The molded lip with two holes should face the front of the box. See Diagram D for guidance.

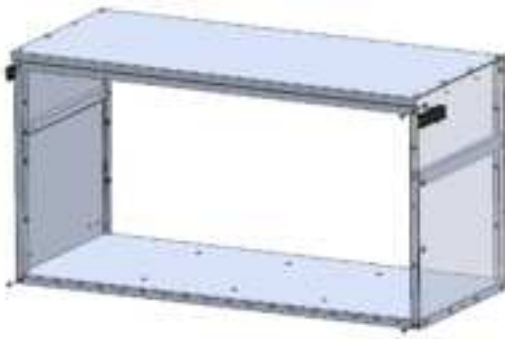
8. Using the 1/8" Hex Key, 3/8" Wrench, and 8 Short Button Head Bolts [7] and 8 Serrated Flange Locknuts [8] attach the Top [D] to the Left Panel [B] and Right Panel [C]. See Diagram D below for guidance.

DIAGRAM D



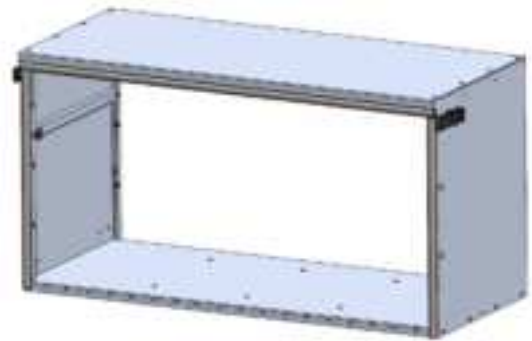
9. Secure the frame by using the 1/8" Hex Key, 3/8" Wrench, and 4 Short Button Head Bolts [7] with 4 Serrated Flange Locknuts [8]. Attach these in the front of the box—2 on the top through the Top [D] panel and 2 on the bottom corners where the flanges from the Left Panel [B] and Right Panel [C] overlap the Base [A]. See Diagram E below for guidance.

DIAGRAM E



10. Apply the long Door Foam [5] along the top part of the box, under the lip of the Top [D] panel. Then apply the two short Door Foam [6] pieces on the Left Panel [B] and Right Panel [C]. See Diagram F below.

DIAGRAM F



Attaching Handles to Out-In-About Box™ 2.0

11. Decide if you want your new Out-In-About Box™ 2.0 to operate in Tailgate Style, where the lid opens down and towards you, or Camp Chest Style, where the lid opens up and away from you. *This will determine where you place your handles.*
12. Using the 1/8" Hex Key, 3/8" Wrench, 4 Long Button Head Bolts [9], and 4 Nylock Nuts [2] attach the 2 Nylon Webbing Handles [12] to the Left Panel [B] and Right Panel [C] using the predrilled holes. Refer to Diagram G for reference, displayed in Tailgate Style.
- If operating in Tailgate Style, attach handles to the Left Panel [B] and Right Panel [C] at the top, with the handle facing the Top Panel [D].

- b. If operating in Camp Chest Style, attach handles to the Left Panel [B] and Right Panel [C] on the side, with the handles facing the front of the box.

DIAGRAM G

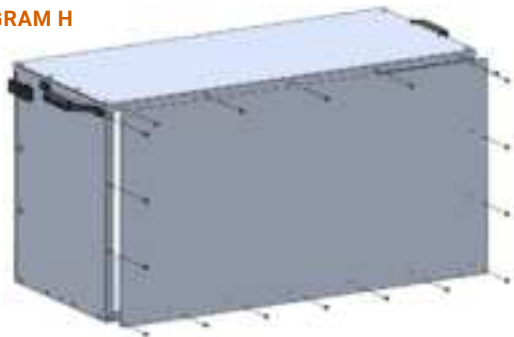


Attaching Back Panel to Out-In-About Box™ 2.0

13. Using the 1/8" Hex Key, 3/8" Wrench, 18 Short Button Head Bolts [7], and 18 Serrated Flange Locknuts [8] attach the Back Panel [F] to the box.

Note the top of the Back Panel [F] has two holes on either side of the corners, whereas the bottom has one hole in each corner. See Diagram H below for guidance.

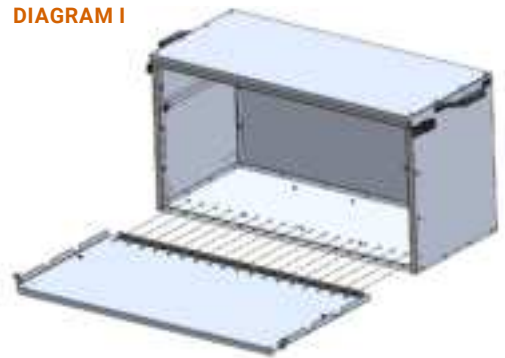
DIAGRAM H



Attaching Door to Out-In-About Box™ 2.0

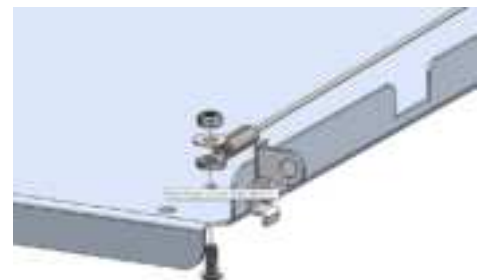
14. Regardless of whether the door is being attached in a Tailgate Style or Camp Chest Style, rotate the box so the Door [E] lays flat on a stable surface. Using the 1/16" Hex Key and 1/4" Wrench, secure the door to the Base [A] via the pre-attached hinge with 18 Flat Top Countersink Screws [10] and 18 Nylock Nuts [11]. Refer to Diagram I below for guidance.

DIAGRAM I



15. Place the door on a flat, stable surface. Using the 1/8" Hex Key and 3/8" Wrench, secure the Door Cables [4] to the Door [E] through the second predrilled hole from the top. Use 4 Medium Button Head Bolts [1], 4 Nylock Nuts [2], and 2 Flat Washers [3] for attachment. Refer to the Diagram J for guidance.

DIAGRAM J



16. Using the 1/8" Hex Key, 3/8" Wrench, 2 Short Button Head Bolts [7], and 2 Serrated Flange Locknuts [8] attach the Door Cable Anchor Point [16] to the inside of the box on the Left Panel [B] and Right Panel [C]. See Diagram K for guidance.

DIAGRAM K

17. Attach the Door Cables [4] to the Door Cable Anchor Points [16] using the pre-attached carabiners. See Diagram L for guidance.

DIAGRAM L

Congratulations! Your Out-In-About Box™ 2.0 is now fully built and ready to be used.

Fill as needed with all your essential gear and enjoy! Looking to further customize your Out-In-About Box™ 2.0? Check out our Add-On Kits designed specifically for it!

Add-On Kits For Your Out-In-About Box™ 2.0

Visit [Renlicon.com](https://www.renlicon.com) to further customize your new storage box with our Add-On Kits:

Shelf Kit: Keep your gear neatly organized and easily accessible with the Shelf Kit, featuring adjustable shelves and dividers for a fully customizable setup.

Wheel Kit: Make moving your Out-In-About Box™ 2.0 effortless with the Wheel Kit—just roll it wherever you need, no heavy lifting required.

Table & Legs Kit: Turn your Out-In-About Box™ 2.0 into a sturdy, adjustable workspace with the Table & Legs Kit—perfect for meal prep or extra gear storage wherever you set up. Compatible only with the Tailgate Style build.

Questions or Concerns? If you need any assistance during setup or operation, don't hesitate to contact us at (530) 893-5244. We're here to help!