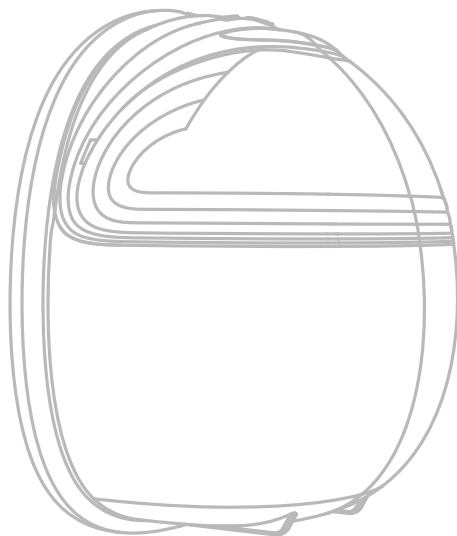




Wearable Breast Pump **S21**

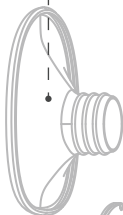


Installation steps + Instructions for use

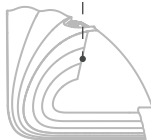
Installation steps

Wearable breast pump:

Silicone breast shields



Pump motor



Silicone diaphragm



Milk collector
+ Linker



Duckbill
valve

Instructions for duckbill valve installation

Insert the raised part of the duckbill valve into the round hole at the bottom of the suction bowl groove of the bra.



Picture 1



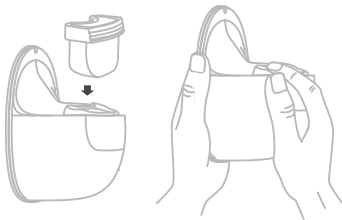
Picture 2



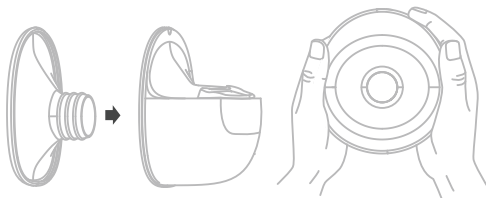
Duckbill valve

Assembling

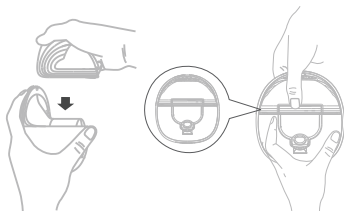
- ① Put the silicone diaphragm into the milk collector, and press it with your hands to make the edges fasten tightly to ensure a perfect seal.



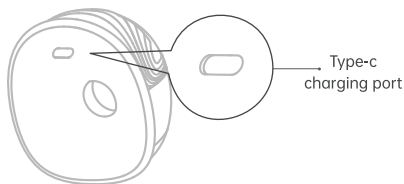
- ② Put the silicone shield into the breast milk collector and press it with your hands to make the edges tightly fastened. Make sure to install it in the correct direction.



- ③ Install the pump motor on the breast milk collector to ensure that it fits perfectly with the breast milk collector.



- ④ Connect the type-c charging cable to charge the battery.



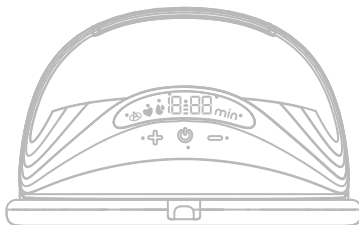
⚠Note:

- 1.This product has a built-in li-Ion battery. When the battery indicator lights red, we recommend that you use a certified 5V \equiv 1A adapter to charge the pump motor as soon as possible.
- 2.The power adapter is a common standard accessory on the market. This product is not provided and can be purchased separately if necessary. Power adapter specifications: 5V \equiv 1A.
- 3.The duration of pumping should be no more than 20 minutes.
- 4.Check all parts for malfunction or damage. Parts may need to be replaced in time.

Cleaning and sterilizing

- 1.For the first time and before each use, you must disassemble, wash and sterilize all the breast pump parts that come into contact with breast milk.
- 2.After use, please immediately disassemble and clean all parts in contact with breasts and breast milk (membrane, milk bottle,duckbill valve, shield) to avoid breast milk residue or bacterial growth; It is recommended to use drinking water or detergent for cleaning (water temperature should not exceed 100°C, exceeding it will damage the part sand lead to deformation of the parts).

Control panel



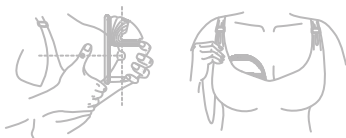
- | | |
|--|---------------------|
| ① Expression indicator | ⑥ Level display |
| ② Stimulation indicator | ⑦ Battery display |
| ③ Massage indicator | ⑧ Time display |
| ④ Level up button | ⑨ Time/Minute |
| ⑤ Power button/
Mode selection button | ⑩ Level down button |

⚠ Operation cautions

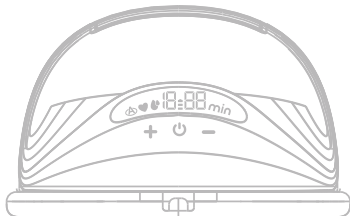
1. These components do not come into your breast milk. You can wipe those parts clean with a soft cloth.
2. Take care when cleaning the valve and the silicone diaphragm. If it gets damaged, your breast pump will not function properly.
3. To clean the valve, rub it gently between your fingers in warm soapy water. Do not insert objects as this may cause damage.

Display description:

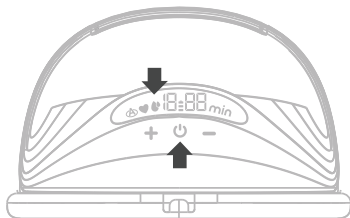
- ① Press the silicone funnel firmly against the breast, leave no gaps and make sure your nipples are centered. Keep it upright. Be careful not to distort the position of the product and the chest, otherwise, the breast pump will not have suction.



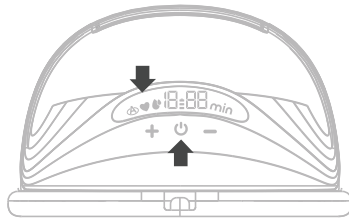
- ② Lightly press the power button to start the breast pump, and the timing display will light up.



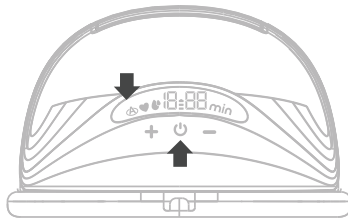
- ③ Short press the "⏻" power button to switch the expression mode "👉". There are 12 levels in this mode. You can press the "+" and "-" buttons to select the suction power that makes you comfortable.



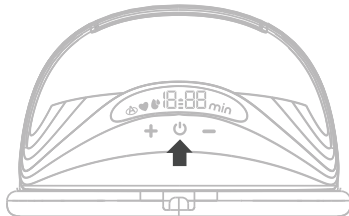
- ④ Short press the "⏻" power button to switch to the massage mode "❤️", There are 12 levels in this mode. You can press the "+" and "-" button to select the suction power that makes you comfortable.



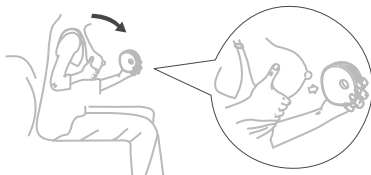
- ⑤ Short press the power button "⏻" to switch to the automatic mode "👶". There are 12 levels in this mode. Levels 1-6 are massage mode "♥", and levels 7-12 are expression mode "👶". The range of automatic upshift is 1-9 levels and, the interval between up shifts is 20 seconds. 10-12 levels need to be adjusted manually. During the up shifting process, you can select the suction power that makes you comfortable by pressing the "+" and "-" buttons.



- ⑥ Long press the power button "⏻" to turn off the breast pump.



- ⑦ After pumping, press the power button to turn off the breast pump, lean forward slightly, and then carefully remove the breast pump from the breast. If there is a small amount of breast milk remaining at the silicone shield, you can tilt the breast pump slightly to pour the remaining breast milk from the silicone shield.



Tips:

- 1.This model has a built-in memory function, when you turn on the machine again, the machine automatically enters and up shifts to the working mode and suction level you used last time.
- 2.The breast pump will automatically stop after 20 minutes of work.
- 3.When you wear the breast pump, relax and sit in a comfortable chair, leaning forward slightly (use the cushion to support your back). In this way, the silicone shield of the breast pump can be slightly inclined upward, which facilitates the flow of breast milk into the milk collector and reduces the residual breast milk in the silicone shield.

Instructions for bra adjusting buckle

Adjusting the length of bra straps, makes pumping more comfortable. One end of the bra adjustment buckle hung on the inside buckle of nursing bra. Adjust the length of the bra buckle according to your preference.



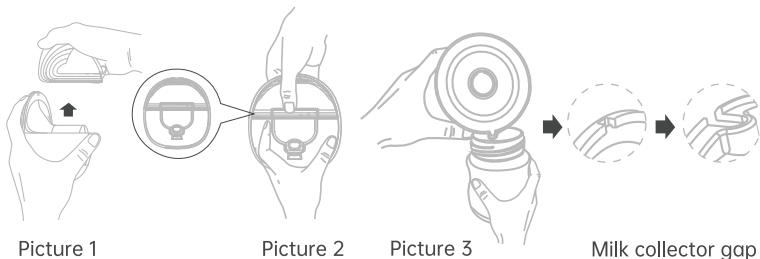
Picture 1

Picture 3

Picture 2

Instructions for pouring milk

After you finish pumping, please remove the breast pump from the breast. Keep the breast pump upright and remove the motor part, hold the milk collector to pour the breast milk into a bottle, and make sure the milk collector gap of the breast cup is aligned with the mouth of the bottle to prevent breast milk spilled.



Storing your breast milk

• Breast milk storage

1. Only store breast milk collected from sterilized breast pumps.
2. The sucked milk should be placed in a clean and sterilized milk storage bag or a milk bottle with a seal, and immediately placed in the refrigerator to refrigerate or freeze.

• Breast milk cold storage

1. Do not refreeze breast milk twice.
2. Do not mix fresh breast milk with frozen breast milk.
3. Be sure to throw away any remaining breast milk after feeding.
4. The pumped milk can be refrigerated in the refrigerator for 48 hours, or frozen in the freezer for 3 months (Do not store breast milk in the door of the refrigerator or freezer). The milk bottle or milk storage bag can be affixed with a label clearly marking the milking date and time.

- **Thawing breast milk**

Place the frozen breast milk in the refrigerator overnight to thaw. If you're in a hurry, the fastest way to defrost breast milk is to put it in a bowl of warm water. The thawed breast milk must be consumed within 24 hours.

- **Heating breast milk**

1.Place the baby bottle with breast milk upright in a bowl of warm water or in a food heater to warm breast milk safely and quickly.

2.Keep in mind! Before feeding your baby, be sure to check the temperature of breast milk.