

**Drums**  
**Millenium**

MPS-750X PRO

User Manual

E-Drum Set



Thomann GmbH  
Hans-Thomann-Straße 1  
96138 Burgebrach  
Germany  
Telephone: +49 (0) 9546 9223-0  
Internet: [www.thomann.de](http://www.thomann.de)

12.05.2023, ID: 561586\_493327

Table of contents

1 Safety instructions..... 4

2 Scope of delivery..... 5

3 Assembly..... 7

4 Protecting the environment..... 14

# 1 Safety instructions

### Bestimmungsgemäßer Gebrauch

E-drum sets consist of a drum module and drum pads. The drum module converts the digital trigger signals from the drum pads into various drum sounds. Use the unit only as described in this manual. Any other use or use under other operating conditions is considered to be improper and may result in personal injury or property damage. No liability will be assumed for damages resulting from improper use.

This device may be used only by persons with sufficient physical, sensorial, and intellectual abilities and having corresponding knowledge and experience. Other persons may use this device only if they are supervised or instructed by a person who is responsible for their safety.

### Safety



#### **DANGER!**

##### **Risk of injury and choking hazard for children!**

Children can suffocate on packaging material and small parts. Children can injure themselves when handling the device. Never allow children to play with the packaging material and the device. Always store packaging material out of the reach of babies and small children. Always dispose of packaging material properly when it is not in use. Never allow children to use the device without supervision. Keep small parts away from children and make sure that the device does not shed any small parts (such as knobs) that children could play with.



#### **CAUTION!**

##### **Possible hearing damage due to high volumes on speakers or headphones!**

With speakers or headphones connected, the device can produce volume levels that may cause temporary or permanent hearing impairment. Over an extended period of time, even levels that seem to be uncritical can cause hearing damage. Do not operate the device permanently at a high volume level. Decrease the volume level immediately if you experience ringing in your ears or hearing impairment.



#### **NOTICE!**

##### **Operating conditions**

This device has been designed for indoor use only. To prevent damage, never expose the device to any liquid or moisture. Avoid direct sunlight, heavy dirt, and strong vibrations. Only operate the device within the ambient conditions specified in the chapter 'Technical specifications' of this user manual. Avoid heavy temperature fluctuations and do not switch the device on immediately after it was exposed to temperature fluctuations (for example after transport at low outside temperatures). Dust and dirt inside can damage the unit. When operated in harmful ambient conditions (dust, smoke, nicotine, fog, etc.), the unit should be maintained by qualified service personnel at regular intervals to prevent overheating and other malfunction.



#### **NOTICE!**

##### **External power supply**

The device is powered by an external power supply. Before connecting the external power supply, ensure that the input voltage (AC outlet) matches the voltage rating of the device and that the AC outlet is protected by a residual current circuit breaker. Failure to do so could result in damage to the device and possibly the user. Unplug the external power supply before electrical storms occur and when the device is unused for long periods of time to reduce the risk of electric shock or fire.



#### **NOTICE!**

##### **Possible staining**

The plasticiser contained in the rubber feet of this product may possibly react with the coating of your surface and after some time cause permanent dark stains. In case of doubt, do not put the rubber feet directly on the surface and use a suitable underlay if necessary, i.e. felt pads or similar.

## 2 Scope of delivery

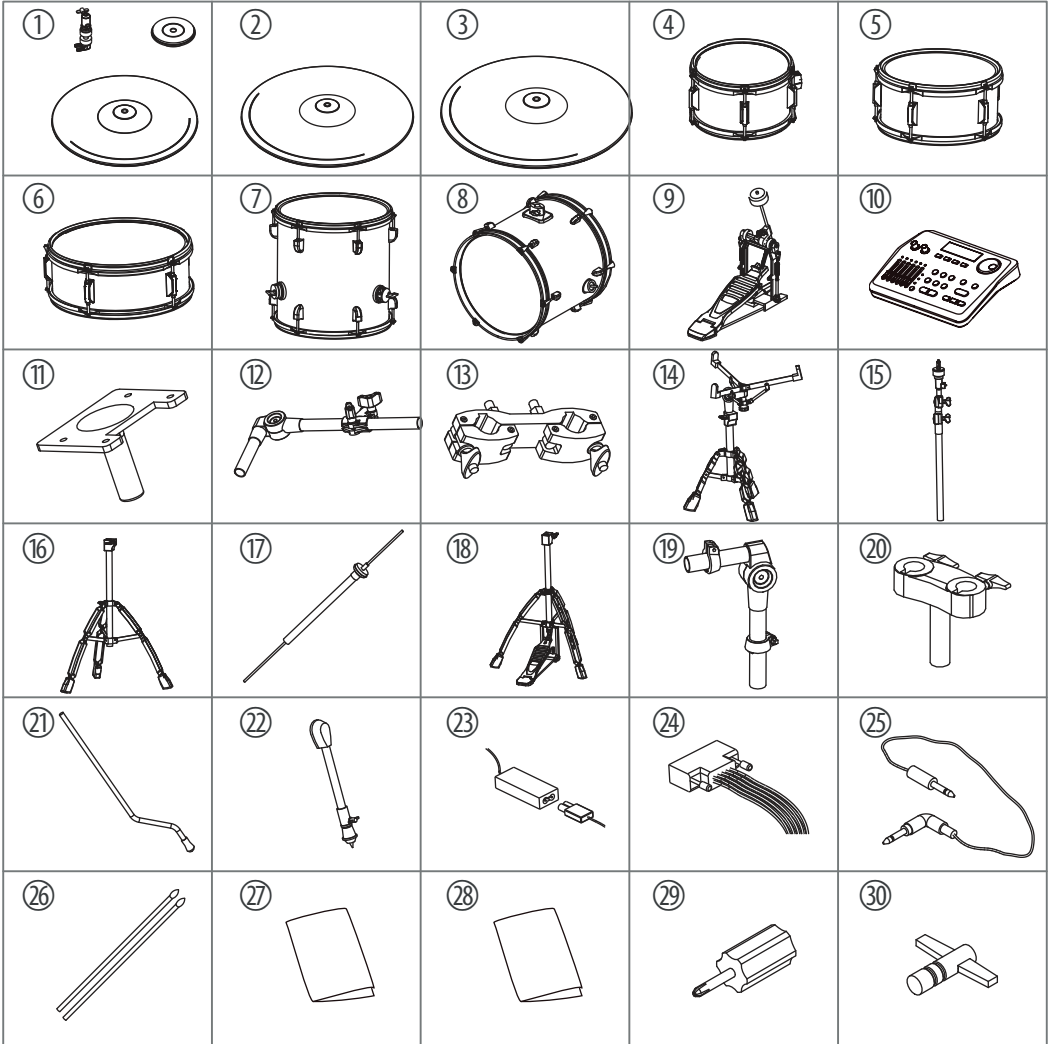


Before you assemble your drum set, make sure the contents of package is complete according to the following list.

Item	Qty.	
1	1	Hi-hat cymbal with pedal (13 inch)
2	1	Crash pad (15 inch, dual zone, with choke function)
3	1	Ride pad (18 inch, triple zone, with choke function)
4	1	Tom pad (10 inch, dual zone, mesh head)
5	1	Tom pad (12 inch, dual zone, mesh head)
6	1	Snare pad (13 inch, dual zone, mesh head)
7	1	Ground tom pad (14 inch, dual zone, mesh head)
8	1	Bass drum pad (18 inch) with bass drum pedal
9	1	Bass drum pedal
10	2	MPS-750X drum module
11	1	Drum module holder
12	1	Drum module holder
13	1	Drum module holder connecting arm
14	1	Snare pad stand
15	2	Upper cymbal stand
16	2	Lower cymbal stand
17	1	Upper hi-hat stand (tube, rod and support)
18	1	Lower hi-hat stand with bass drum pedal
19	2	Tom rack
20	1	Tom rack connection
21	3	Ground tom legs
22	2	Bass drum legs
23	1	Mains plug
24	1	Multi-connector cable set
25	1	Trigger cable for crash pad
26	1	Drumstick set
27	1	Assembly instructions for MPS-750X PRO E-Drum Mesh Set
28	1	User manual for MPS-750X Drum Module

Scope of delivery

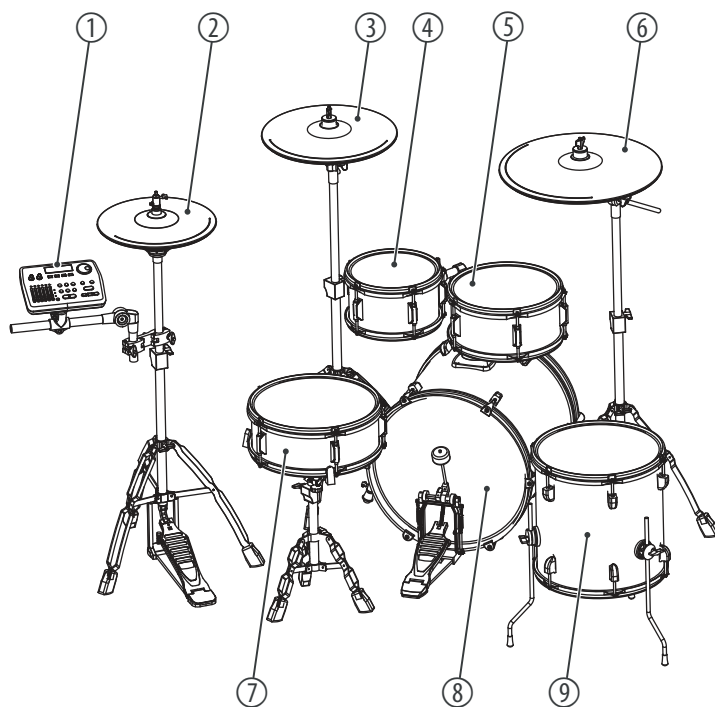
Item	Qty.	
29	1	Screwdriver
30	1	Drum set key



### 3 Assembly

#### Overview

Loosen the screws of the clamps before sticking the tubes together. Mount the various elements in the specified sequence. The final positions of the components are shown in the illustration below.



1	Drum module
2	Hi-hat pad with pedal (13 inch)
3	Crash pad (15 inch, dual zone, with choke function)
4	Tom pad (10 inch, dual zone, mesh head)
5	Tom pad (12 inch, dual zone, mesh head)
6	Ride pad (18 inch, triple zone, with choke function)
7	Snare pad (13 inch, dual zone, mesh head)
8	Bass drum pad (18 inch) with bass drum pedal
9	Ground tom pad (14 inch, dual zone, mesh head)

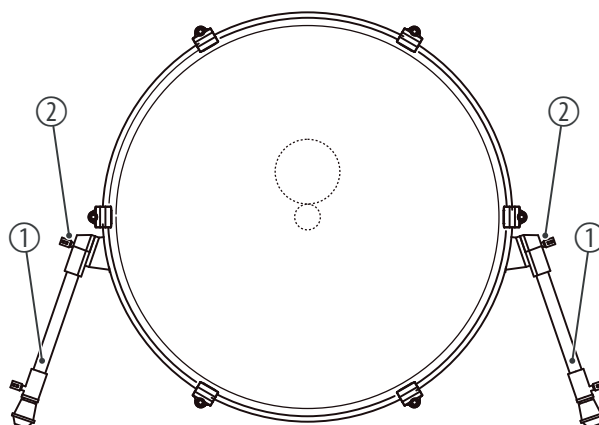
### Setting up the bass drum and tom pads (10 inch and 12 inch)

#### CAUTION!

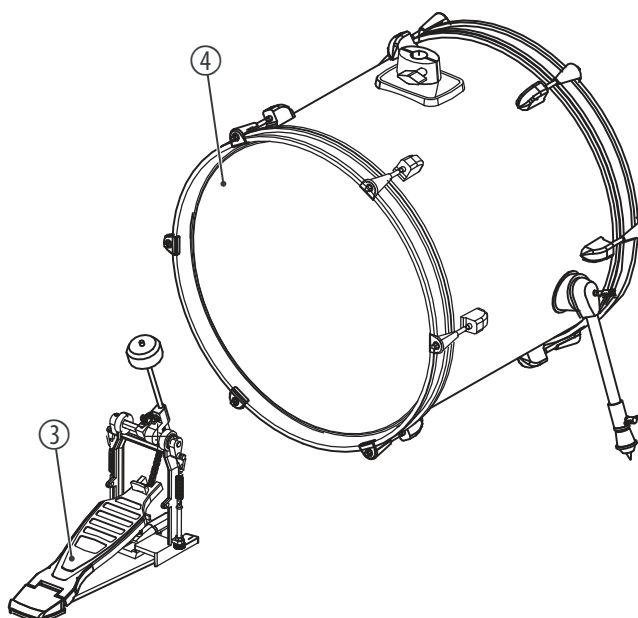
##### **Risk of cuts to the hands from sharp edges during assembly!**

Tools, screws and components can have sharp edges that can cause cuts during assembly.

Pay attention to sharp edges when assembling and screwing the individual parts. Wear protective gloves if necessary.

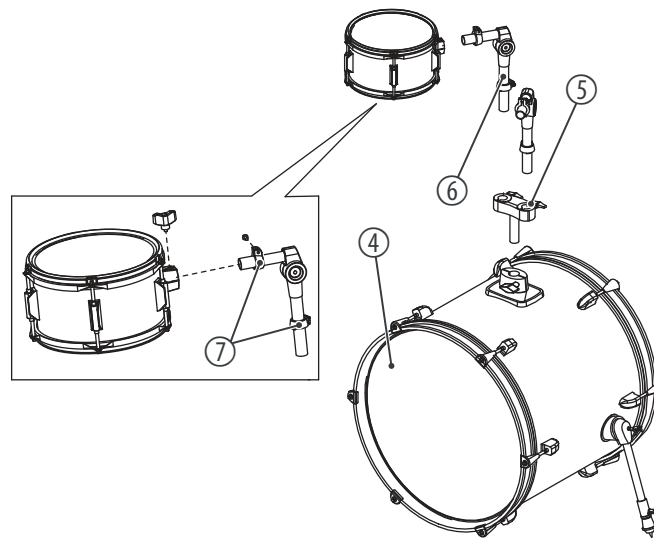


1. ➤ Attach the legs (1) to both sides of the bass drum.
2. ➤ Tighten the wing nuts (2).
3. ➤ Unfold the legs (1) to prevent slipping.



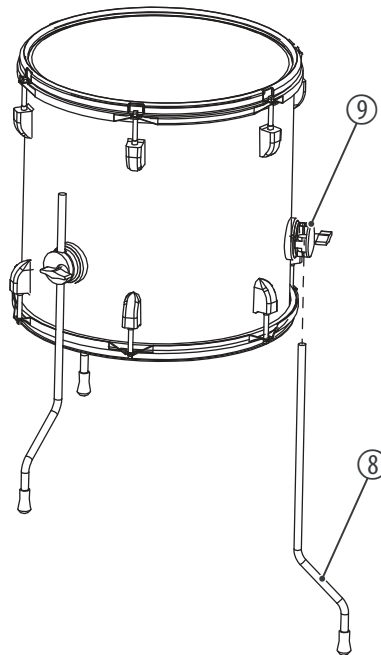
1. ➤ Attach the bass drum pedal (3) to the bass drum (4).
2. ➤ Adjust the position of the bass drum pedal (3) and tighten the wing nuts.





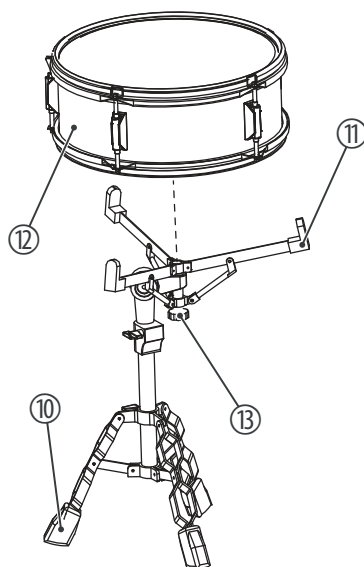
1. Insert the connecting part (5) for the support tubes (6).
2. Place the two support tubes (6) of the tom pads in the holes of the connecting part (5).
3. Adjust the orientation of the lower memory locks (7) so the tap is pointing down.
4. Place the two tom pads in the support tubes (6) and adjust the upper memory locks (7).

### Setting up the ground tom



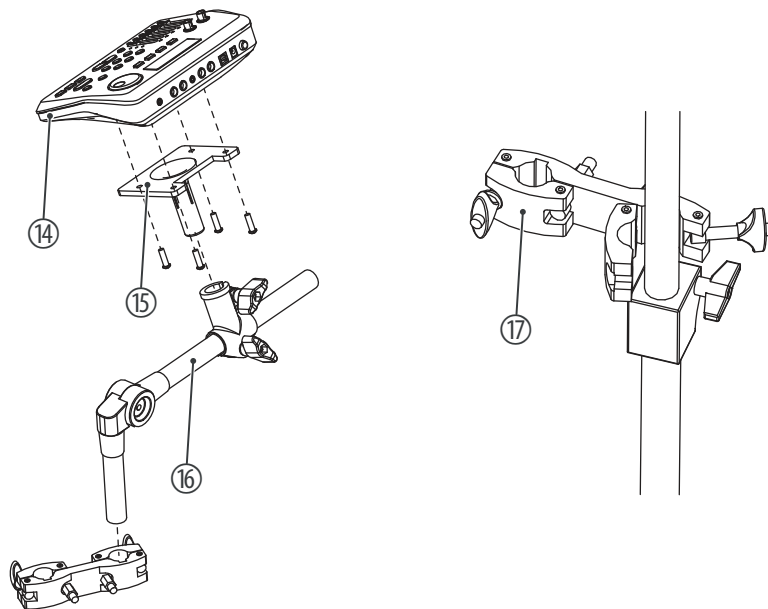
1. Push the legs (8) of the ground tom into the connecting parts (9) on the sides.
2. Tighten the wing nuts of the fastening clamps.

## Assembling the snare



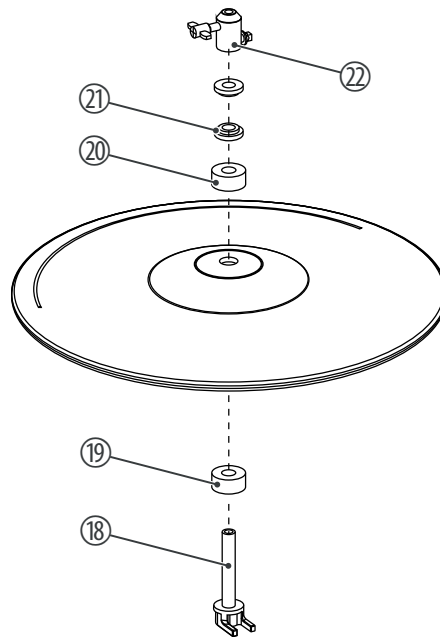
1. ➤ Open the legs (10) of the snare pad stand so it is stable.
2. ➤ Open the arms (11) of the snare stand. Pull the arms of the snare pad stand as far apart as possible.
3. ➤ Place the snare pad (12) onto the stand so it is facing upwards.
4. ➤ Tighten the arms (13) of the snare stand with the stabiliser (13).

## Assembling the drum module



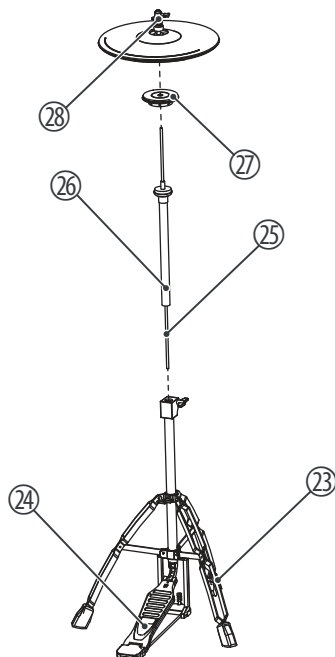
1. ➤ Place the base of the drum module (14) on the holder (15) so that the holes are above each other.
2. ➤ Screw the drum module to the holder.
3. ➤ Unfold the support tube (16).
4. ➤ Place the drum module in the fastening clamp by its holder (17)
5. ➤ Tighten the wing nuts of the fastening clamps.

## Assembling the hi-hat cymbal



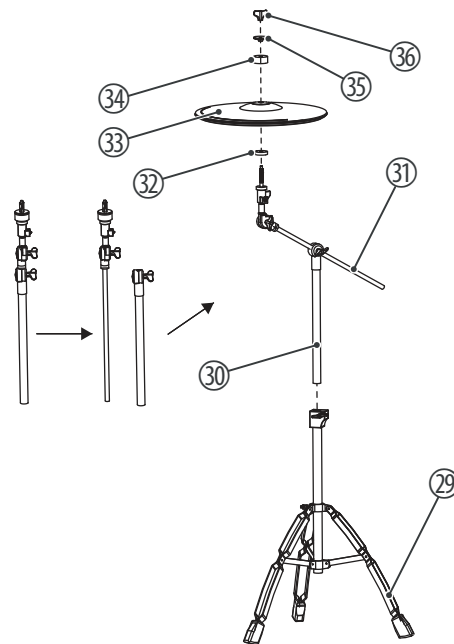
- 1.** ➤ Put the felt washer (19) on the metal stopper (18).
- 2.** ➤ Align the metal stopper on the base of the cymbal and insert the metal stopper.
- 3.** ➤ Put on the felt washer (20) and the round nut (21) as shown in the figure.
- 4.** ➤ Tighten the screws of the clasp (22) on the metal stopper.

### Mounting the hi-hat on the rack



1. ➤ Open the legs (23) so that the hi-hat stand is stable.
2. ➤ Push the forks of the bass drum pedal (24) into the holes on the base of the stand.
3. ➤ Screw the rod (25) clockwise into the thread.
4. ➤ Attach the tube (26) to the upper end of the stand so that the rod (25) protrudes from the tube.
5. ➤ Adjust the height of the tube (26), tighten the wing nuts of the fastening clamps and push the support (27) over the tube so it is resting on the rod (25)
6. ➤ Push the hi-hat cymbal onto the tube. Leave enough space between the support and the cymbal so that you can control the opening and closing of the cymbal.
7. ➤ Tighten the screws on the clasp (28) of the hi-hat cymbal.

## Assembling the cymbal



1. ➤ Open the legs (29) so that the hi-hat stand is stable.
2. ➤ Place the upper part of the stand (30) into the base.
3. ➤ Open the wing nuts of the upper part of the stand (30). Extend the cymbal rod (31) and adjust the position as shown in the figure.
4. ➤ Place the thin felt washer (32), the cymbal pad (33), the thick felt washer (34), the washer (35) and the wing nut (36) one after the other on the rod (31) as shown in the figure.

## Set-up and cabling

Set up the rack, the pads and the cymbals according to your needs. Finally, position the pedal with the bass drum pad in front of the rack and connect all triggers to the drum module.



*The tension of the mesh heads is relatively low in the delivery state in order to avoid damage during transport. For good playability and better trigger behaviour, adjust the drum head tension to your playing habits.*

## 4 Protecting the environment

### Disposal of the packaging material



For the transport and protective packaging, environmentally friendly materials have been chosen that can be supplied to normal recycling.

Ensure that plastic bags, packaging, etc. are properly disposed of.

Do not just dispose of these materials with your normal household waste, but make sure that they are collected for recycling. Please follow the notes and markings on the packaging.

### Disposal of your old device



This product is subject to the European Waste Electrical and Electronic Equipment Directive (WEEE) in its currently valid version. Do not dispose with your normal household waste.

Dispose of this device through an approved waste disposal firm or through your local waste facility. When discarding the device, comply with the rules and regulations that apply in your country. If in doubt, consult your local waste disposal facility.



